



NAJAD 460

Year 2004



DIAMOND Yachts, Yachtzentrum Baltic Bay
Börn 17 | 24235 Laboe

NAJAD 460



Boat sold.

Main Info

Model	NAJAD 460
Manufacturer	Najadvarvet AB (SWE)
Designer	judel/vrolijk & co.
Category	Centercockpit cruiser
Year	2004
Location	Südfrankreich
Flag	Germany
VAT status	EU-VAT paid
Material	GRP
Rig	Sloop with furling mast
Cabins	2
Berths	4

Dimensions & Material

LOA	13.95 m
LWL	11.88 m
Beam	4.28 m
Draft	2.15 m
Displacement	15.5 t
Sail area	100 m ²
Engine	YANMAR 4JH3-HTE
Power	100 PS/74 KW
Drive	Shaft with folding propeller
Fresh water	565 L
Fuel	460 L
Holding tank	150 L

Key Facts

- Elegant, modern lines by judel/vrolijk & co.
- NAJAD 460 in 2 cabin layout.
- Electric genoa winches.
- Diesel generator.
- Longitudinal galley to port.
- Removable cutter stay.
- Blue decoration.
- Bowthruster.

Description

Modern, fast and very seaworthy bluewater-cruiser built by the quality yard Najadvarvet on the island of Orust in the western Swedish archipelago. The NAJAD 460 offers everything you need for long distance sailing: Excellent performance thanks to judel/vrolijk [&] co.-design, a safe and well protected centercockpit with fixed windscreen, a solid, rigid structure and a lot of living space and comfort below decks. The NAJAD 460 still has the traditional underwater hull with deep bilge, skeg forward of the rudder blade and shaft drive. Solid, beautiful and very well finished mahogany interior in the best Scandinavian boatbuilder's tradition. This NAJAD 460 is offered by her first owner and has had continuous professional maintenance and technical service. Fully equipped with furling mast, removable cutter stay, electric genoa winches, bow thruster, diesel generator and extensive RAYMARINE navigation. 2 cabin layout with spacious owner's cabin aft over the entire beam of the yacht, large forward guest cabin, longitudinal galley in the passage to the aft cabin to port side and two heads compartments. Special feature of this NAJAD 460: The yacht has dark blue stripes, which is rather unusual for a NAJAD.

Rig/Sails

- Keel-stepped, 9/10-fractional SELDEN furling mast (can be operated from the cockpit)
- Three sets of aft-swept spreaders (open V-spreaders)
- Standing rigging new in 2022
- Genoa furling system FURLEX 300s
- Removable cutter stay with Pelican quick tensioner
- Hydraulic backstay tensioner NAVTEC
- Spinnaker pole stowed on mast
- 2 x halyard winches ANDERSEN 46.2ST on mast
- 3 colour light and anchor light in mast top
- Cockpit lighting in boom
- Furling mainsail approx. 51 m² with vertical battens (new 2021)
- Furling genoa approx. 64 m² UK-Sailmakers DCX (new 2019) with reefing compensator in luff and UV-protection
- Spinnaker gear

Deck

- Teak deck on running decks, coachhouse roof, aft deck, swim platform and in cockpit
- Electric anchor windlass 1.500 W Lofrans Progress 2 with remote control in cockpit
- Mooring gear: BRUCE-anchor 30 kg and 60 m anchor chain 10 mm
- Electric stainless steel genoa winches ANDERSEN 58.2STE
- Stainless steel mainsheet winches ANDERSEN 46.2ST
- Fixed windscreen with opening centre window and handrails outside
- Sprayhood
- Cockpit cover
- Bimini
- Spacious cockpit locker to starboard
- Two lockers below aft deck
- Stainless steel pushpit with integral teak seats
- Railing gates to starboard and port
- Folding teak cockpit table
- High gloss varnished chart tables and companionway
- Stainless steel mooring cleats and spring cleats amidships
- Teak outboard bracket on pushpit
- Stern shower hot/cold
- Swim ladder
- Bow ladder

Layout/Interior

- Well finished interior in satin varnished African mahogany with beautiful detailing and plenty of solid wood in mouldings, frames and profiles
- Teak floorboards with light stripes
- Spacious saloon with L-shaped dinette at saloon table to port
- Two single armchairs to starboard
- Large forward facing chart table with navigator's seat to starboard aft
- Longitudinal galley in passage to aft cabin to port
 - Worktop in CORIAN
 - Gas stove (3 burners and oven)
 - Electric remote switch for gas valve
 - Double sink
 - Large electric cool box
 - Second electric cool box
 - Ample storage in lockers, drawers and compartments
- Spacious owner's cabin aft with island double berth (pocket spring mattresses), seat, deck hatch, coachhouse windows, two portholes in transom and ample storage in lockers, drawers and compartments
- En-suite owner's heads to starboard with electric toilet, sink and shower
- Forward guest cabin with V-shaped double berth and large lockers
- Forward heads compartment to port with marine toilet, sink and shower
- Blinds and mosquito screens in deck hatches
- Six Dorade Vents on deck, numerous opening deck windows and large deck hatches provide excellent ventilation

Technical Equipment

- YANMAR 4JH3-HTE 4 cylinder turbo diesel 100 hp/74 KW
- Operating hours (as of October 2023): 811 h
- 40 mm stainless steel shaft with flexible coupling Aquadrive and 3 blade folding propeller Flex-o-Fold
- Spacious, easily accessible and soundproofed engine room
- Stainless steel diesel tank approx. 460 l
- Bow thruster MAXPOWER
- Diesel generator Fischer Panda 6 KW, operating hours (as of October 2023): 134 h
- 230 V shore power connection with charging cable
- 230 V sockets below decks
- Battery charger HI-TEC 24 V/50 A
- 4 x service battery 12 V/140 Ah
- Starter battery 12 V/75 Ah
- Battery controller DCC4000
- Diesel heating EBERSPÄCHER D5L
- Hot water boiler 40 l
- Electric toilet in owner's heads compartment
- 2 x stainless steel holding tank 75 l with Y-valve, deck connection and sea discharge
- Safe

Navigation/ Electronics

- RAYMARINE instruments above companionway:
 - ST60+ Log
 - ST60+ Echosounder
 - ST60+ Wind
 - ST60+ Close hauled
- Multifunction display RAYMARINE RL80C behind windscreen
- RAYMARINE radar antenna on mast
- GPS antenna RAYMARINE Ray150 (new 2021)
- Autopilot RAYMARINE ST7001 with Mamba-Drive
- Compass
- Multifunction display RAYMARINE RL70C at chart table
- ST60 Multi at chart table
- ST60 Multi in owner's cabin
- VHF-radio SIMRAD RS87 DSC at companionway with two external speakers
- R[&]R combi antenna "Biscaya" (VHF/FM/AM)
- Radio/CD-player BLAUPUNKT with two speakers in saloon and two cockpit speakers
- Radio/CD-player BLAUPUNKT with two speakers in owner's cabin
- Barometer and thermometer/hygrometer

Safety

- Life raft Transocean 6 pers. in quick drop bracket on pushpit
- Fire extinguisher
- Lightning protection (all shrouds and stays connected to keel bolts)
- AQUASIGNAL signal horn at mast
- Radar reflector
- Two electric and one manual bilge pump
- Lifesling

Accessories

- Folding gangway 2,40 m
- Cockpit cushions
- Fenders
- Mooring lines

Brokerage Liability Disclaimer

All information especially regarding the VAT-status of a yacht has been supplied by third parties. It is non-binding and without guarantee, subject to error and alteration. Our brokerage relies exclusively on information supplied by the vendor carefully compiled and checked by us to the best of our knowledge. Hence, a liability for correctness and completeness of provided information cannot be assumed.

IMAGES



IMAGES



IMAGES



IMAGES



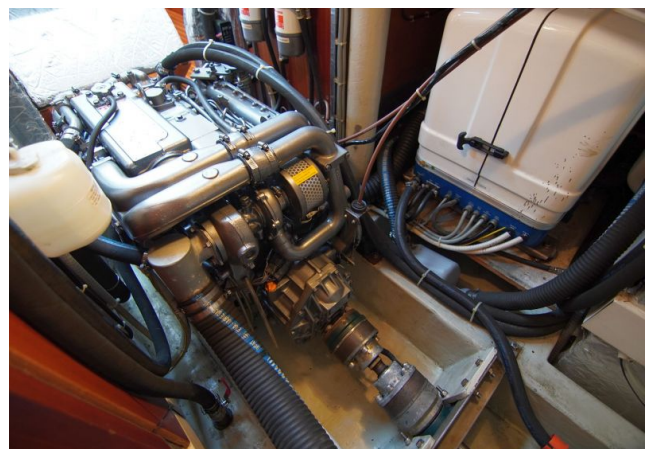
IMAGES



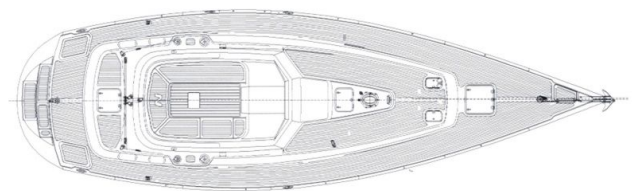
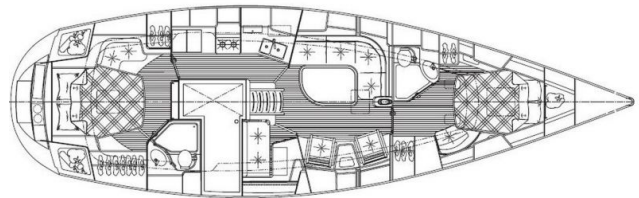
IMAGES



IMAGES



IMAGES



IMAGES

