



AMEL 50

Year 2018



DIAMOND Yachts, Yachtzentrum Baltic Bay
Börn 17 | 24235 Laboe

AMEL 50



Boat sold.

Main Info

Model	AMEL 50
Manufacturer	Chantiers AMEL S.A. (FRA)
Designer	AMEL Design Group
Category	Bluewater cruiser
Year	2018
Location	Côte d'Azur/Südfrankreich
Flag	France
VAT status	EU-VAT paid
Material	GRP
Rig	Sloop with cutter stay
Cabins	3
Berths	6

Dimensions & Material

LOA	16.50 m
LWL	14.50 m
Beam	4.79 m
Draft	2.15 m
Displacement	19 t
Sail area	126 m ²
Engine	VOLVO PENTA D3-110
Power	110 PS/81 KW
Drive	Shaft drive
Fresh water	600 L
Fuel	675 L
Holding tank	160 L

Key Facts

- Air conditioning and diesel heating.
- Retractable bow thruster.
- First handover in 2018.
- Electric furling mast.
- Diesel generator ONAN 8 KW.
- Electric davits and dinghy.
- Electric head sail furlers.
- Fixed doghouse.

Description

Luxurious and seaworthy bluewater cruiser from France fully equipped for circumnavigation. Her proven concept, the high standard of boatbuilding in the shipyard and the focus on safety, reliability and comfort make AMEL sailing yachts legendary vessels for long distance cruising and you meet them in the most remote areas of the world. Very rigid, torsion-free construction using vinylester resins with laminated bulkheads.

Deep, well-protected cockpit with fixed doghouse above the helm station. Bright and modern interior with plenty of light and air below decks through numerous large hull ports and coachhouse windows, eight deck hatches and seven portholes. The AMEL 50 was elected "European Yacht of the Year 2018" in the category luxury cruiser. Delivered in 2018 this AMEL 50 has hardly been used and is in mint condition. Continuous maintenance and technical service by a professional skipper. Extensive specification including retractable bow thruster, electric furling systems, electric winches, electric davits incl. dinghy, air conditioning and diesel heating, diesel generator 8 KW, watermaker etc. The yacht has the optional interior in palisander which contrasts with the white padded interior panels and the light laminated floorboards. The foto at the top of this specification is a brochure picture of a sister ship.

Rig/Sails

- Deck stepped, top-rigged AMEL mast
- Two sets of aft swept spreaders
- Electric mainsail furling system and electric outhaul
- Rig painted white
- Electric genoa furler
- Fixed cutter stay with electric furler
- White painted spinnaker pole (stowed on mast)
- Gennaker/spinnaker deck gear
- Dyneema/Vectran halyards
- 3 xLED deck light on mast
- LED spreader lights
- LED cockpit light in boom
- LED 3 color lantern and anchor light in mast top
- Furling mainsail INCIDENCES Hydranet triradial approx. 62 m²
- Furling genoa INCIDENCES Hydranet triradial approx. 64 m² with UV-protection
- Furling self-tacking jib on cutter stay INCIDENCES Hydranet triradial approx 24 m² UV-protection
- Furling gennaker INCIDENCES approx. 180 m² incl. furling system

Deck

- Stainless steel bowsprit for gennaker/code-0 with integrated anchor roller
- Electric anchor windlass with remote control in cockpit
- Mooring gear: DELTA-anchor 32 kg and 100 m stainless steel anchor chain 10 mm
- Continuous fixed guard rail in stainless steel tube with gates to starboard and port
- Integrated teak seats in pushpit
- Four stainless steel mooring cleats
- Four stainless steel spring cleats
- Electric genoa winches HARKEN 60.2STE
- Secondary winches HARKEN 46.2ST
- Electric halyard winch HARKEN 46.2STE
- Large sail locker below foredeck with storage for fenders, mooring lines and sails
- Large locker below aft deck
- Deep, well protected cockpit with helm station and steering seat to port
- Doghouse with windscreen (opening central window), two hatches in the roof and cockpit lights in ceiling
- Sun protection for doghouse windows
- Fixed, retractable bimini with side and aft canvas panels as cockpit enclosure
- Electro-hydraulic folding swim platform with wireless remote control
- Swim ladder
- Stern shower hot/cold
- Fixed, electric AMEL davits
- Folding cockpit table in teak and stainless steel
- Outboard engine bracket on pushpit

Layout/Interior

- Spacious saloon with U-shaped dinette to port around the folding saloon table with two additional seats/poofs
- L-shaped sofa to starboard
- Forward facing chart table to port aft
- Longitudinal galley in passage to aft cabin to starboard
 - CORIAN worktop
 - Double sink
 - Microwave 230 V
 - Refrigerator 125 l with 2 drawers
 - Freezer
 - Dishwasher
 - NESSPRESSO machine
 - Gas stove FORCE 10 (3 burners and oven)
- Luxurious, spacious owner's cabin aft over the entire beam of the yacht with island double berth, settee and vanity table, safe, ample storage space in lockers, compartments, shelves and below the berth, that can be lifted up by gas springs.
- En-suite owner's heads with separate shower and electric toilet to port
- Guest cabin forward with double berth
- Quest heads compartment with separate shower and electric toilet to port
- Lateral cabin to starboard with bunk beds
- Exclusive and well finished rosewood interior with white padded panels, laminated floorboards and numerous leather applications
- Leeclorth below berths
- OCEANAIR blinds and mosquito screens
- Blinds for hull ports and coachhouse windows
- LED interior lighting (ceiling spotlights, indirect lighting and reading lights)

Technical Equipment

- VOLVO PENTA D3-110 5 cylinder inboard diesel 110 hp/81 KW
- Engine hours: 432 h in September 2019
- EVC system with electronic throttle
- Hydraulic transmission
- Shaft drive with feathering propeller VARIOFOLD and line cutter on propeller shaft
- Large, easily accessible engine compartment with excellent sound insulation
- Retractable bow thruster SIDEPOWER 24 V/8 hp
- Encapsulated diesel generator ONAN 8 KW (operating hours: 88 h in September 2019)
- 230 V shore power connection
- Battery charger 24 V/100 A
- Second battery charger 24 V/60 A
- Inverter 24 V/230 V/2.500 W
- 24 V service battery bank with a capacity of 600 Ah
- Starter battery 12 V/90 Ah
- 230 V and 12 V/USB sockets
- Air conditioning for all areas
- WEBASTO diesel heater
- Washer/dryer
- Watermaker DESSALATOR dual voltage 24 V/230 V/100 l/h
- Two electric toilets with holding tank 80 l with deck connection and sea discharge
- Hot water boiler 50 l
- Fresh water dock connection
- Seagull fresh water filter in galley
- LED navigation lights
- LED interior lights

Safety

- Liferaft 8 pers.in container on pushpit
- Jon Buoy rescue module on pushpit
- Rescue buoy with floating line
- EPIRB
- Fire extinguishers
- Electric and manual bilge pumps
- Jackstays on deck

Accessories

- Dinghy (Highfield RIB with 4-stroke outboard engine HONDA 6 hp)
- Folding carbon fiber gangway
- Cockpit cushions
- Sunpad for aft deck
- Sunpad for foredeck
- Sun awning for boom
- Canvas covers for steering wheel, console, steering seat, cockpit table and companionway
- Complete bed linen
- Inflatable fenders incl. compressor
- Mooring lines

Brokerage Liability Disclaimer

All information especially regarding the VAT-status of a yacht has been supplied by third parties. It is non-binding and without guarantee, subject to error and alteration. Our brokerage relies exclusively on information supplied by the vendor carefully compiled and checked by us to the best of our knowledge. Hence, a liability for correctness and completeness of provided information cannot be assumed.

Navigation/Electronics

- BROOKS [&] GATEHOUSE Hydra 5000 system
- 2 x B[&]G GFD display in cockpit and GFD display at chart table
- Analogue B[&]G wind display in cockpit
- Autopilot FURUNO Navpilot 711C
- GPS/chartplotter 15" NavNet TZtouch2 at helm station
- Second 15" display FURUNO NavNet TZtouch2 at chart table
- Radar antenna FURUNO
- AIS-transponder FURUNO FA50
- Compass
- Video camera in mast
- VHF-radio GARMIN 200i with second station at helm station
- Satellite communication IRIDIUM GO
- TV LCD flat screen 40" with electric lift in saloon, TV-antenna and separate inverter 24 V/230 V/800 W
- TV LCD flat screen 28" in owner's cabin
- Router World Pepwave WIFI 3G/4G with receiver and amplifier
- FUSION MS-AV755 marine entertainment system AM/FM/Bluetooth/USB/iPhone with BOSE sound system incl. subwoofer in saloon and cockpit speakers
- Clock, barometer, thermometer

IMAGES



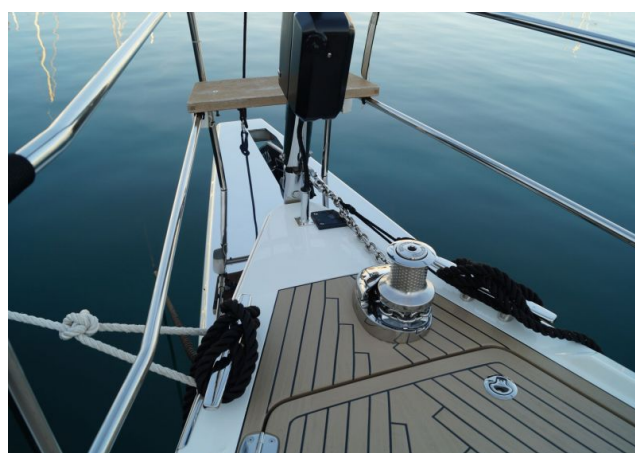
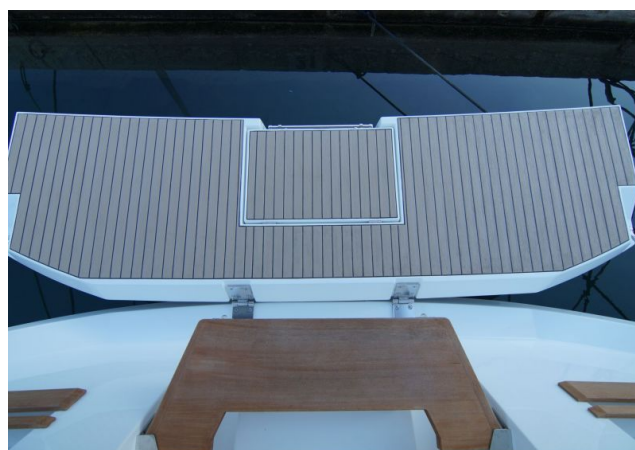
IMAGES



IMAGES



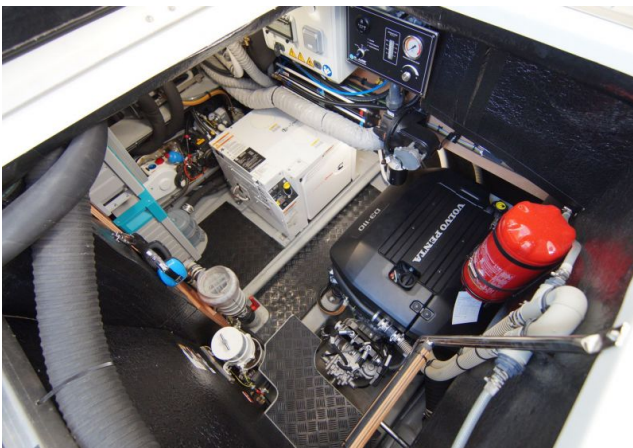
IMAGES



IMAGES



IMAGES



IMAGES

