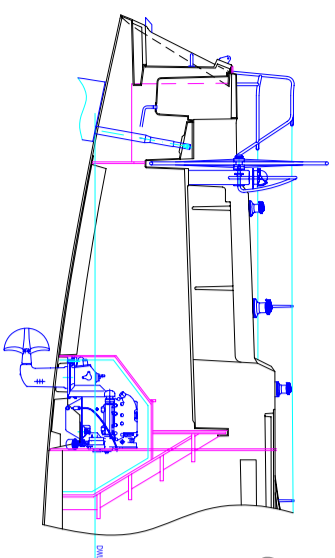
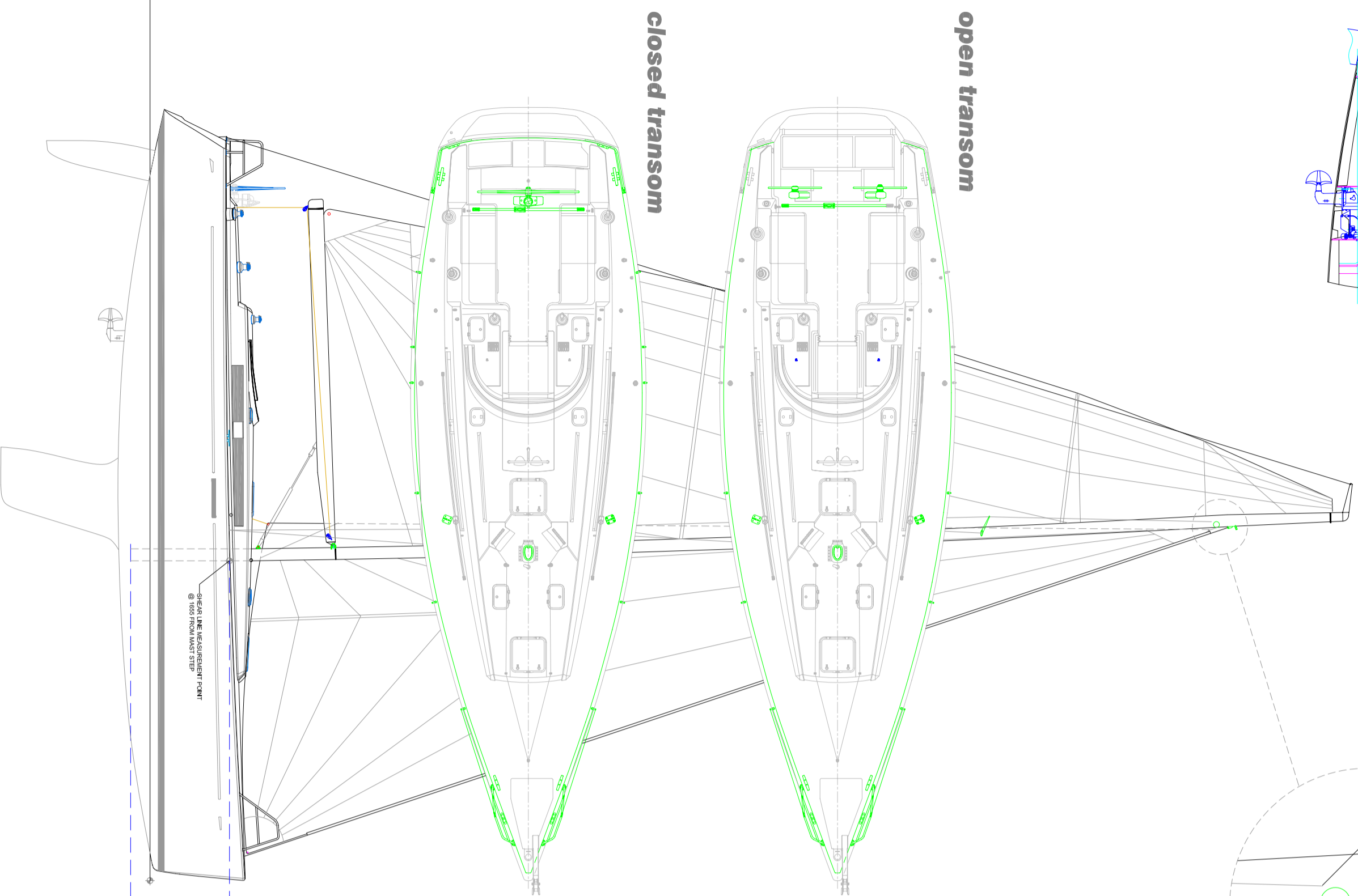
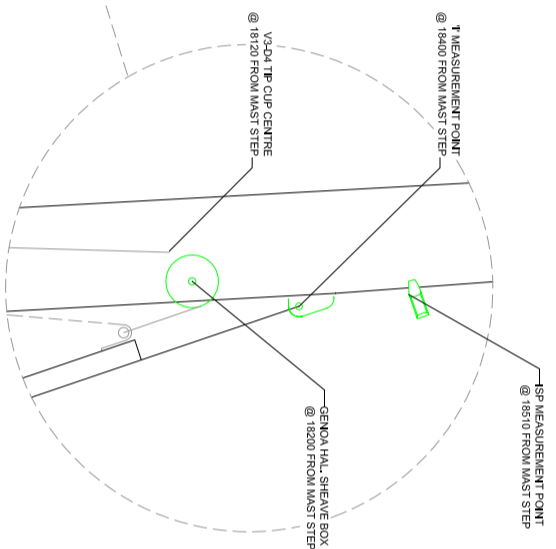


open transom

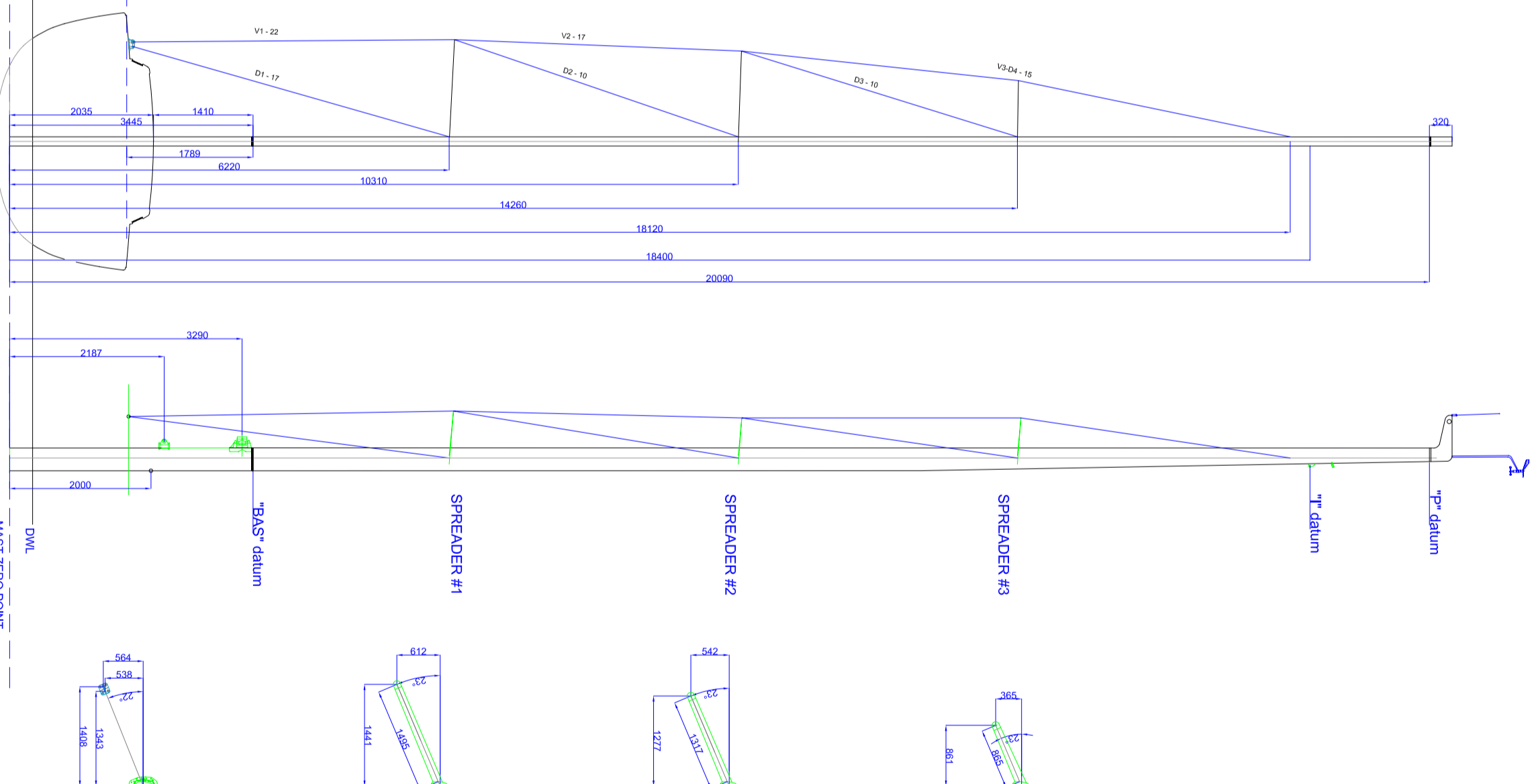


closed transom



closed transom

open transom



MAST DATA

RM @ 1" Head	222,5 kg/m
RMSE	1,5"
SPREADERS SWEEP BACK	23,0°
CHAIN PLATE WIDTH	1,408 m

STAY SPECIFICATIONS

STAY	MAINTENANCE	SIZE	No. OF
V1	NAVECT Nitronic 50	-221	2
V2	NAVECT Nitronic 50	-117	2
V3/D4	NAVECT Nitronic 50	-115	2
D1	NAVECT Nitronic 50	-117	2
D2	NAVECT Nitronic 50	-110	2
D3	NAVECT Nitronic 50	-101	2
T (forestay)	NAVECT Nitronic 50	-221	1
Backstay	NAVECT Nitronic 50	-115	1

MAST MEASURES

M	16,475 m
J	4,986 m
P	16,645 m
E	5,700 m
BS (from above sheet)	1,790 m
BS (from above deck)	1,410 m
BLM	2,035 m

SPECIFICATIONS FOR RUNNING RIGGING AND VANG

DESCRIPTION	MAINTENANCE	DIAMETER	LENGTH	No. OF
Main Halyard	Spectra	12,0 mm	46 m	1
Main Sheet	Spectra	12,0 mm	48 m	1
Main Sheet Trimmer	Spectra	8,0 mm	12 m	2
Main Out Haul	Spectra	10,0 mm	14 m	1
Genoa Halyard	Spectra	12,0 mm	42 m	1
TZ (Genoa Sheet)	Spectra	12,0 mm	18 m	2
VANGS	Dynalene	8,0 mm	16 m	2
VANGS 2	Dynalene	6,0 mm	3 m	1
pole traveller	Southern Hg	6,0 mm	15 m	1
Topping Lift (boom up haul)	Polyster	10,0 mm	49 m	1
Reef 1	Polyster	12,0 mm	18 m	1
Reef 2	Polyster	12,0 mm	24 m	1
Reef 3	Polyster	8,0 mm	22 m	2
Reef 4	Polyster	8,0 mm	22 m	2
Genoa Trimmer	Spectra	12,0 mm	47 m	2
Downhaul	Spectra	12,0 mm	47 m	2
SPRINKLERS				
Genoaaker back	Polyster	12,0 mm	18 m	1
Genoaaker sheet	Polyster	10,0 mm	32 m	2
SPRINKLERS				
Spritaker Sheet	Spectra	8,0 mm	28 m	2
Spritaker Guy	Spectra	12,0 mm	20 m	2
Down Pole	Spectra	8,0 mm	25 m	1
Up Pole	Spectra	8,0 mm	38 m	1

mast section SPARCRAFT S622

section	dim XY	IXX' (cm ⁴)	IYY' (cm ⁴)	wall thickness (mm)	weight (kg/m)
S622	234/130	595	1835	4,3	7,36

mast detail scale 1:2

