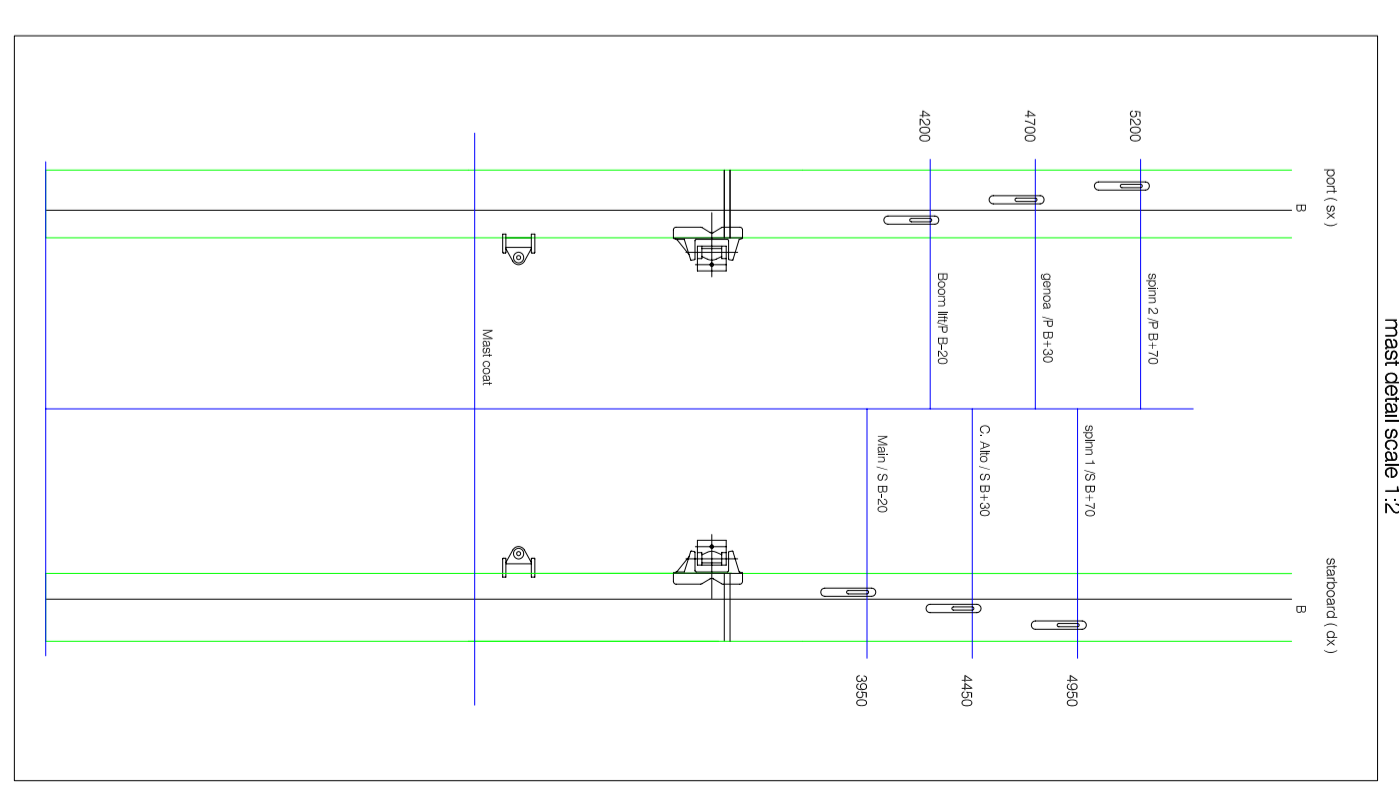
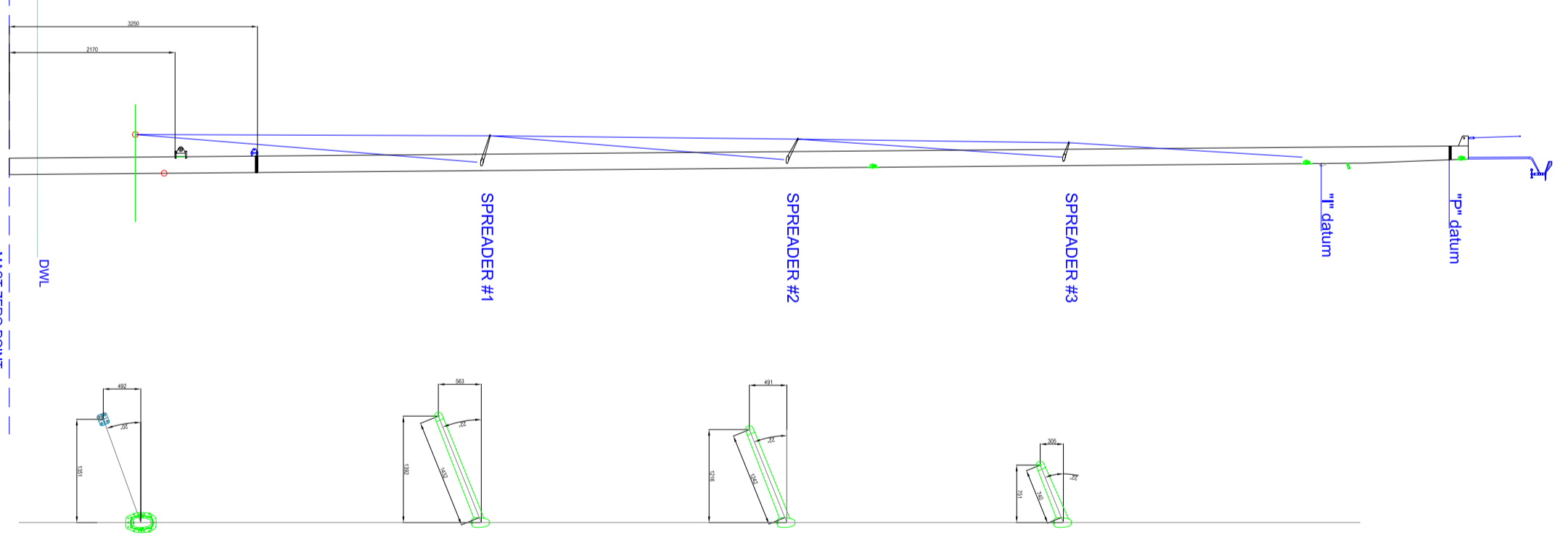
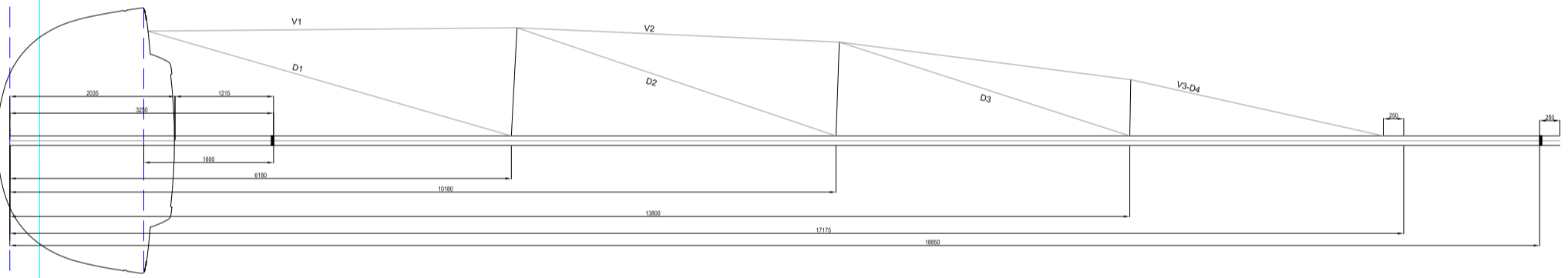
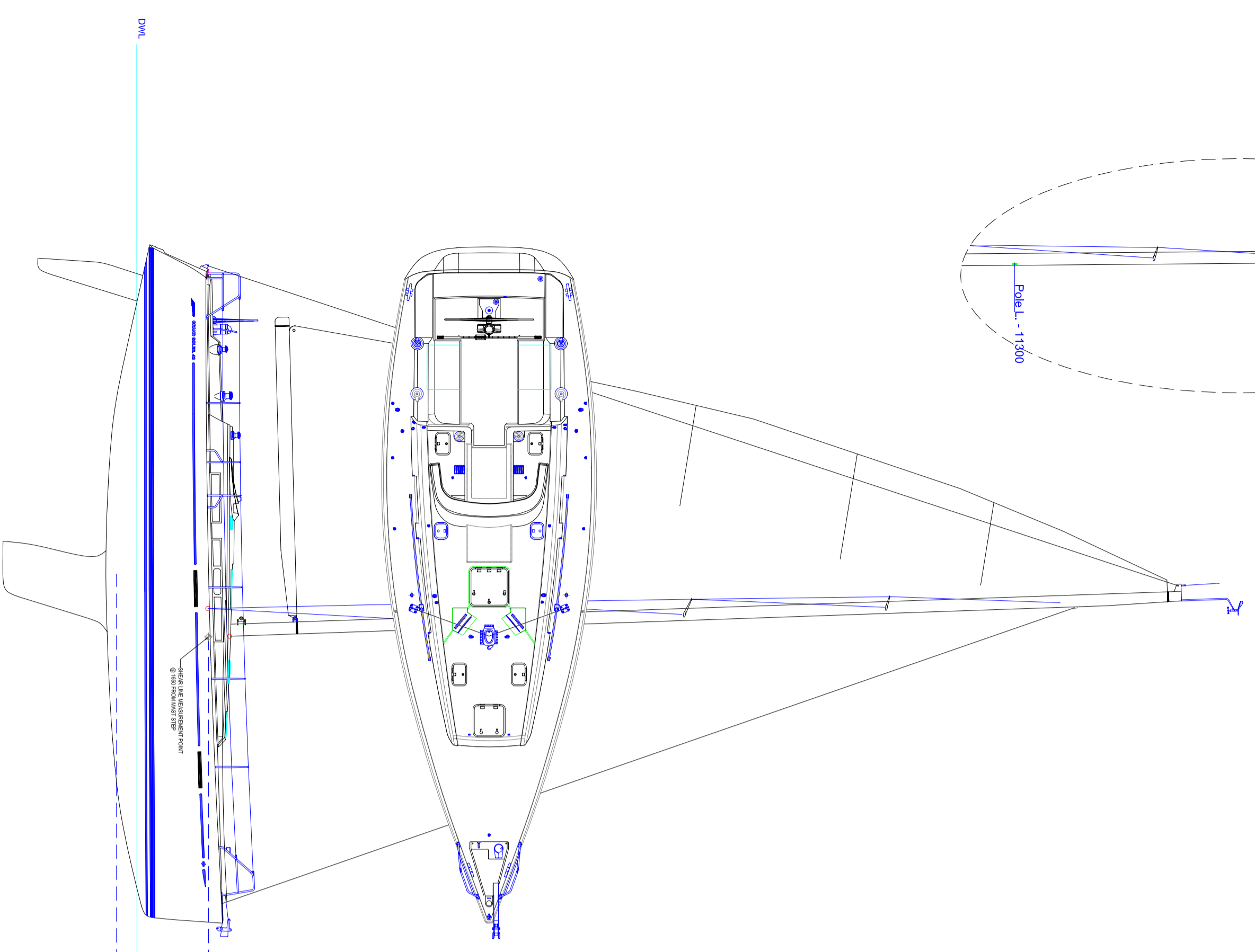
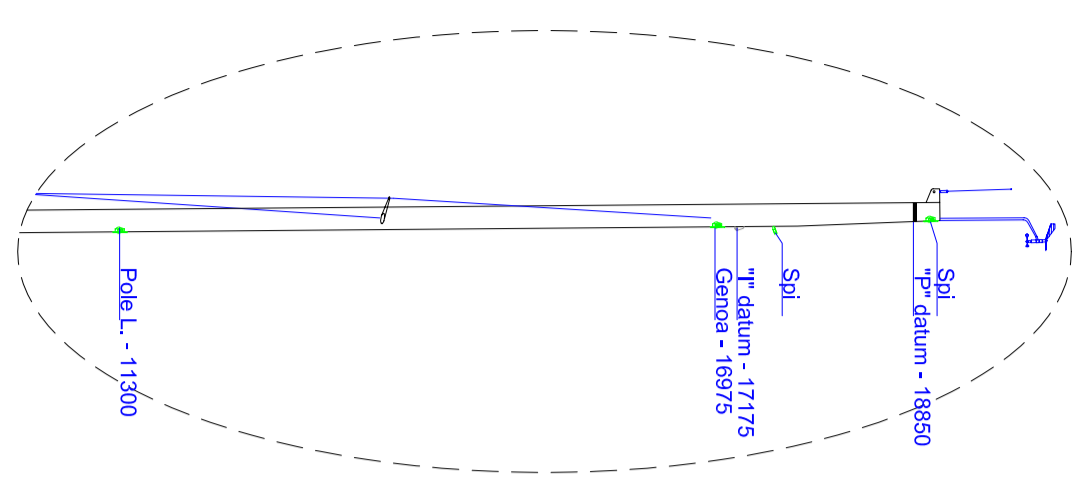


MATERIAL		DIMENSIONS		WEIGHT	
SECTION	DESCRIPTION	LENGTH (mm)	CROSS SECTION (mm)	WEIGHT (kg)	SLIDER (mm)
1	SPREADER #1	1000	30x30	0.15	10
2	SPREADER #2	1000	30x30	0.15	10
3	SPREADER #3	1000	30x30	0.15	10
4	MAST	1000	30x30	0.15	10

Table 1: Mast Section Dimensions and Weights. All dimensions are in millimeters (mm) unless otherwise specified.

MATERIAL		DIMENSIONS		WEIGHT	
SECTION	DESCRIPTION	LENGTH (mm)	CROSS SECTION (mm)	WEIGHT (kg)	SLIDER (mm)
1	SPREADER #1	1000	30x30	0.15	10
2	SPREADER #2	1000	30x30	0.15	10
3	SPREADER #3	1000	30x30	0.15	10
4	MAST	1000	30x30	0.15	10

SECTION	dim X/Y	I XX	I YY	WEIGHT	THICKNESS	SLIDER
F450	(mm)	(cm <sup>4</sup> )	(cm <sup>4</sup> )	(kg/m)	(mm)	(mm)
1	1000/30	15000	15000	0.15	10	10
2	1000/30	15000	15000	0.15	10	10
3	1000/30	15000	15000	0.15	10	10
4	1000/30	15000	15000	0.15	10	10



**GRAND SOLEIL 40'**  
SPARCRAFT RACER MAST