

### MAST DATA

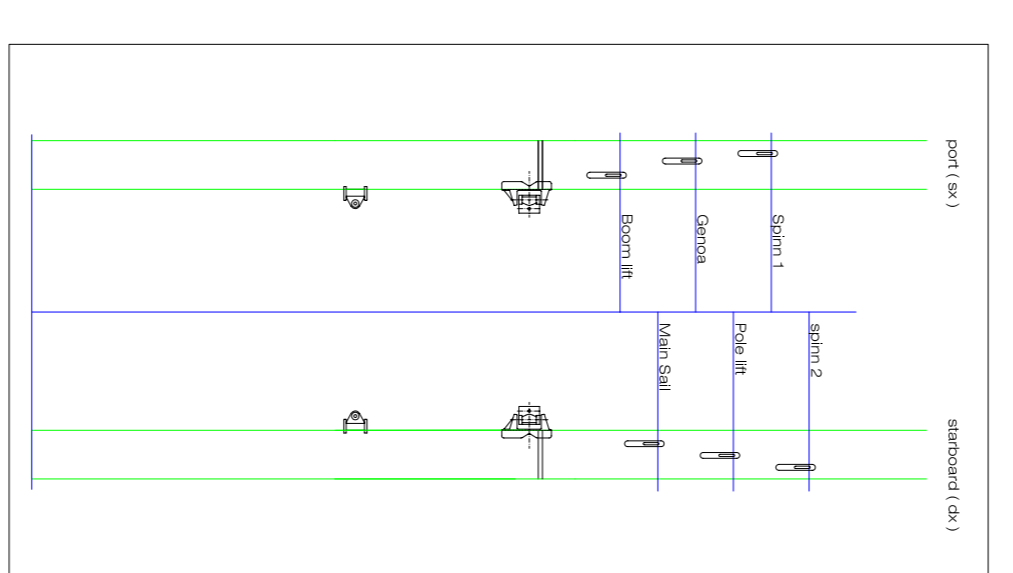
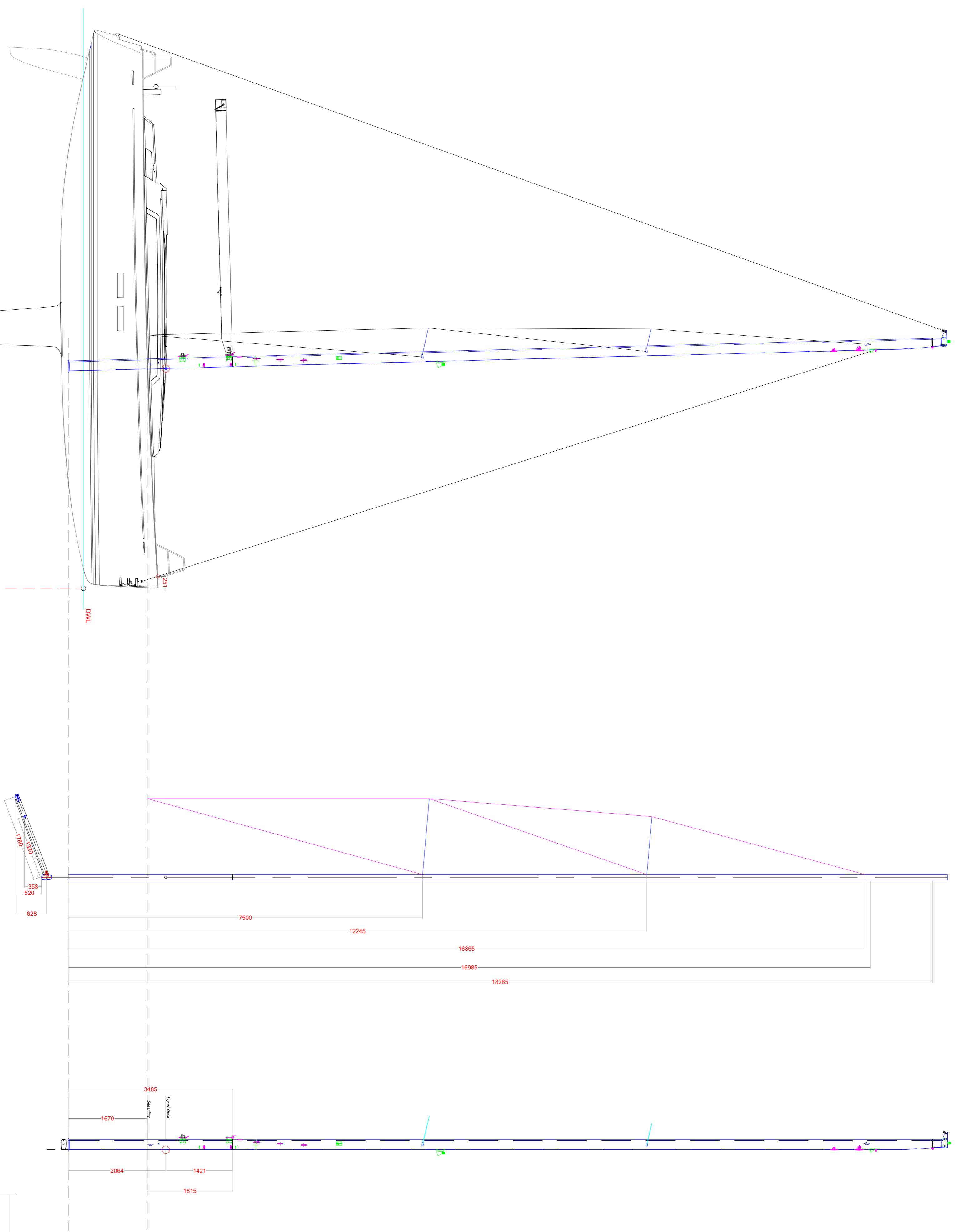
S&B0			
RM @ 1"	180	kgm <sup>2</sup>	
RM @ 30"	5520	kgm	
RM MAX with crew on rail	6750	kgm	
SPRINGS SWEEP BACK	1.5	°	
CHAIN PLATE WIDTH	2044	mm	

### STAY SPECIFICATIONS

	1 x 19 (mm)	No. OFF
V1	10	2
V2/D3	8	2
D1	8	2
D2	7	2
T (forestay)	10	1
Backstay	8	1

### MAST MEASURES

M	15.302	m
L	4.401	m
P	14.801	m
E	5.200	m
BA5 (from above deck)	1.815	m
BA0 (from above Deck)	1.421	m
BARV	2064	mm



Rev n°	Date	Alterations	Drawn by
..	..	..	..

**φ GRAND SOLEIL**  
SAIL PLAN ALUMINIUM STD

Title: GS39N  
Model: GS39N  
Scale: 1:50 @ A1  
First Emission: 09/01/12

CANTIERE DEL PARDO  
Via Fratelli Lumière, 34  
47100 FORLÌ (FC)  
ITALIA

PHONE (+39) 0543 784404  
FAX (+39) 0543 784405

