

MAST DATA

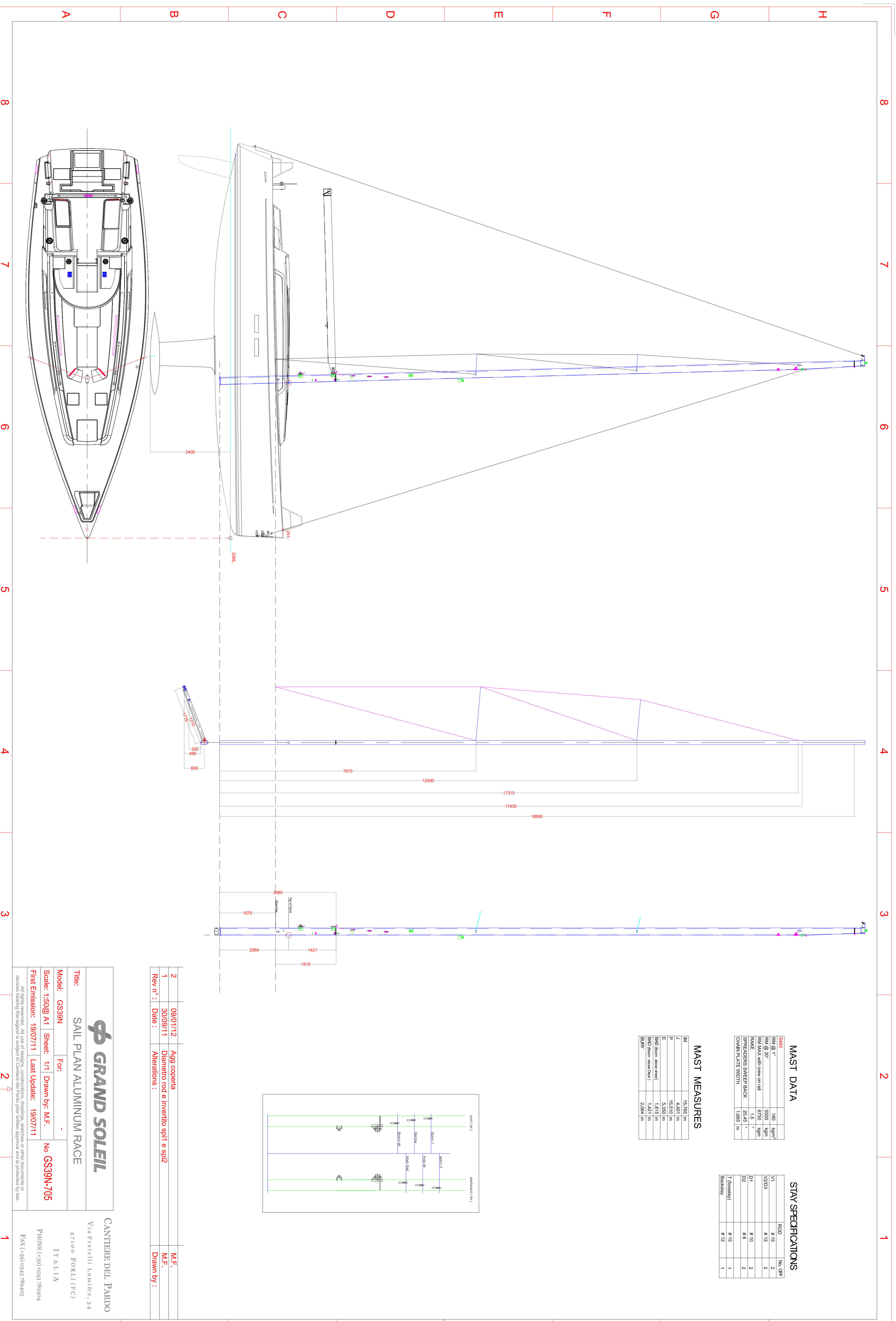
S&B0	ROD	NA. OFF
RM @ 1"	# 180	kg/m ³
RM @ 3/8"	# 5590	kg/m ³
RM MAX with crew on rail	6750	kg/m ³
RM MAX	7135	kg/m ³
SPREADERS SWEEP BACK	20449	°
MAIN PLATE WIDTH	1289	m

STAY SPECIFICATIONS

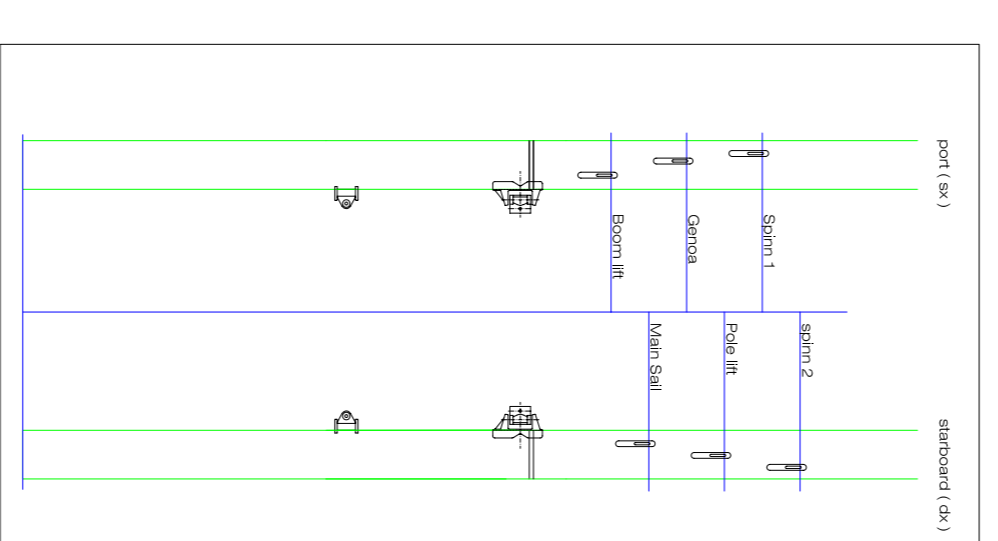
	ROD	NA. OFF
V1	# 15	2
V2/D3	# 12	2
D1	# 10	2
D2	# 8	2
T (forestay)	# 15	1
Balastay	# 12	1

MAST MEASURES

M	15.265 m
H	14.401 m
P	15.510 m
E	5.350 m
ES (from above boom)	1.815 m
ESD (from above boom)	1.421 m
BLRV	2.064 m



2	09/01/12	Agg coperta	M.F.
1	30/09/11	Diámetro rod e invertito sp1 e sp2	M.F.
Rev n° :	Date :	Alterations :	Drawn by :



φ GRAND SOLEIL	
SAIL PLAN ALUMINIUM RACE	
Title:	-
Model:	GS39N
Scale:	1:50 @ A1
First Emission:	19/07/11
Sheet:	1/1
Drawn by:	M.F.
Last Update:	19/07/11
Model:	No GS39N-705

CANTIERE DEL PARDO
Via Fratelli Lumière, 34
47100 FORLÌ (FC)
ITALIA
PHONE: (+39) 0543 782404
FAX: (+39) 0543 782405