



# WAUQUIEZ PILOT SALOON 48

Year 2001



DIAMOND

DIAMOND Yachts, Yachtzentrum Baltic Bay  
Börn 17 | 24235 Laboe

# WAUQUIEZ PILOT SALOON 48



**Boat sold.**

## Main Info

<b>Model</b>	Wauquiez Pilot Saloon 48
<b>Manufacturer</b>	Wauquiez International S.A.
<b>Designer</b>	Ed Dubois
<b>Category</b>	Decksaloon yacht
<b>Year</b>	2001
<b>Location</b>	Sardinien/Italien
<b>Flag</b>	Germany
<b>VAT status</b>	EU-VAT paid
<b>Material</b>	GRP
<b>Rig</b>	Sloop with furling mast
<b>Cabins</b>	3
<b>Berths</b>	5

## Dimensions & Material

<b>LOA</b>	14.90 m
<b>LWL</b>	12.50 m
<b>Beam</b>	4.50 m
<b>Draft</b>	2.15 m
<b>Displacement</b>	17 t
<b>Sail area</b>	106 m <sup>2</sup>
<b>Engine</b>	YANMAR 4JH3-HTE
<b>Power</b>	100 PS/74 KW
<b>Drive</b>	Shaft with folding propeller
<b>Fresh water</b>	600 L
<b>Fuel</b>	800 L

## Key Facts

- Real deck saloon with 360° panorama.
- Light-coloured maple interior.
- Electric furling mast.
- Bow thruster.
- Very solid boat construction.
- Electric winches.
- Diesel generator 6 KW.
- Watermaker 200 l/h.

## Description

Spacious, luxurious deck saloon yacht from the French quality shipyard Wauquiez International S.A. The Pilot Saloon 48 has a bright, friendly deck saloon with raised saloon floor and 360° panorama from the dinette. 3 cabin layout with spacious owner's cabin forward, two asymmetrical aft cabins and two heads, each with separate shower cabin. Very stable, seaworthy and safe cruiser for long voyages from the drawing board of star designer Ed Dubois with large tank capacities and a very solid, rigid structure. Plenty of light and air below decks thanks to large deck saloon windows, many opening portholes and numerous deck hatches. This Wauquiez Pilot Saloon 48 has the optional finish in light-coloured maple, which makes the interior even brighter and friendlier. Easy-to-handle rig with electric furling mast, electric genoa furling system and electric winches. Sail control is completely from the cockpit and electrically assisted. Comprehensive specification including 6 KW diesel generator, 200 l/h watermaker, bow thruster, second forestay with self-tacking jib, comprehensive RAYTHEON/RAYMARINE navigation and second engine throttle in the deck saloon, which, together with the control unit for the autopilot, practically turns the chart table into an inside helm station.

## Rig/Sails

- Keel-stepped, top-rigged SPARCRAFT mast
- Three aft-swept spreaders
- Electric mainsail furling system
- Rig painted white
- Electric genoa furling system
- Second forestay with manual FACNOR furling system
- Self-tacking track with traveller on deck
- Hydraulic NAVTEC backstay tensioner
- Hydraulic NAVTEC boom vang
- Central NAVTEC hydraulic panel in the cockpit for backstay and boom vang
- Two LEWMAR 48.2ST halyard winches and halyard stopper on mast
- 3-colour light and anchor light in masthead
- Furling mainsail approx. 46 m<sup>2</sup> (new 2019)
- Furling genoa approx. 75 m<sup>2</sup> (new 2018) with UV-protection
- Self-tacking jib approx. 40 m<sup>2</sup> (new 2018) with UV-protection

## Deck

- Teak deck on running decks, foredeck, forward coachhouse roof, swim platform and in cockpit
- Electric anchor windlass with remote control and chain counter in cockpit
- Mooring gear: CQR-anchor 27 kg with 70 m anchor chain 12 mm
- LEWMAR 64STE electric genoa winches
- Electric mainsheet winches LEWMAR 48STE
- Electric coachhouse winch LEWMAR 44STE
- Large sail locker below foredeck
- Sprayhood (new 2023)
- Bimini
- Casamare cockpit table integrated in cockpit floor
- Additional folding cockpit table on steering pedestal
- Two lockers below helmsman's seats aft in cockpit
- Deck locker below starboard running deck
- Railing gates to starboard and port
- Swim ladder
- Stern shower hot/cold
- Outboard bracket on pushpit
- Outboard crane on pushpit
- Life raft storage locker in transom
- Electric deck wash pump for fresh and sea water

## Layout/Interior

- Wauquiez Pilot Saloon 48 with an exclusive interior in light maple, teak floorboards with light-coloured stripes, white-covered panels as ceiling panelling and traditional maple panelling on hull sides in cabins.
- Bright, friendly deck saloon with raised floor, so that you have a 360° panoramic view of the horizon while seated in the dinette
- U-shaped seating area and central bench seat at the folding saloon table
- Saloon upholstery in white Alcantara
- Longitudinal galley to port on both sides in the passageway to the forward cabin
  - Work surface in CORIAN
  - Gas hob (3 burners and oven)
  - Electric extractor hood
  - Double sink
  - Large fridge
  - Ample storage space in cupboards, lockers and drawers
- Forward facing chart table with large instrument console and navigator's seat to port aft (a second engine throttle and the control unit for the autopilot practically create a second helm station)
- Luxurious owner's cabin forward with wide double berth, large lockers, storage compartments, drawer, two portholes and two deck hatches
- En-suite owner's heads compartment to starboard with sink, electric toilet and separate shower
- VIP guest cabin to port aft with double berth, vanity/desk, wardrobe, four opening portholes
- Aft cabin to starboard with berth, wardrobe and four opening portholes
- Guest heads to starboard aft with sink, electric toilet and separate shower
- OCEANAIR roller blinds and mosquito screens in deck hatches

## Technical Equipment

- YANMAR 4JH3-HTE 4 cylinder turbo diesel 100 hp/74 KW
- Engine hours (as of May 2024): 2.396 h
- Shaft drive with AQUADRIVE flexible coupling and 3-blade folding propeller
- New hydraulic gearbox in 2024
- Aluminium diesel tank approx. 800 l
- Two electronic Micro Commander throttles (1 x steering pedestal, 1 x chart table)
- Bow thruster MAXPOWER 8 KW (new 2007)
- Diesel generator Fischer Panda 6 KW
- 230 V shore power connection with charging cable
- MASTERVOLT Chargemaster 24 V/60 A battery charger
- Additional battery charger 12 V/8 A
- 6 x service battery 12 V/135 Ah (total capacity: 24 V/405 Ah)
- Starter battery 12 V/80 Ah for engine and generator
- Aluminium fresh water tank approx. 600 l
- Watermaker AQUA-SET approx. 200 l/h
- Hot water boiler 45 l

## Navigation/Electronics

- RAYMARINE instruments in cockpit (new 2024)
  - i60 Wind gauge
  - i50 Log
  - i50 Echo sounder
- RAYMARINE E80 multifunction display in console on steering pedestal
- GPS-receiver RAYTHEON RN300
- Compass
- RAYTHEON autopilot with ST7000+ control unit at chart table and in cockpit and additional RAYTHEON joystick at chart table
- RAYTHEON Pathfinder RL80 radar with radar antenna on mast
- ST60 Multi instrument display at chart table
- VHF-radio SHIPMATE RS8300
- Radio/CD/MP3/USB player with two loudspeakers in saloon and two cockpit loudspeakers
- TV screen in saloon
- Clock, barometer, thermometer/hygrometer
- Barograph

## Safety

- Manual and electric bilge pumps
- Fire extinguishers

## Accessories

- Folding gangway
- Cockpit cushions
- Fenders
- Mooring lines
- Additional anchor gear

### Brokerage Liability Disclaimer

All information especially regarding the VAT-status of a yacht has been supplied by third parties. It is non-binding and without guarantee, subject to error and alteration. Our brokerage relies exclusively on information supplied by the vendor carefully compiled and checked by us to the best of our knowledge. Hence, a liability for correctness and completeness of provided information cannot be assumed.



## IMAGES





## IMAGES



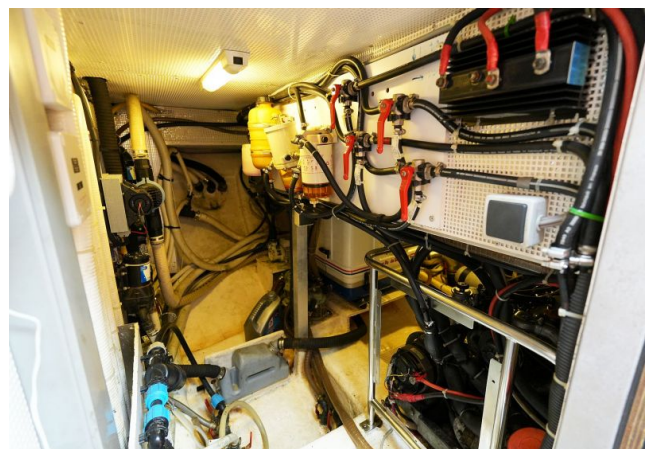


## IMAGES



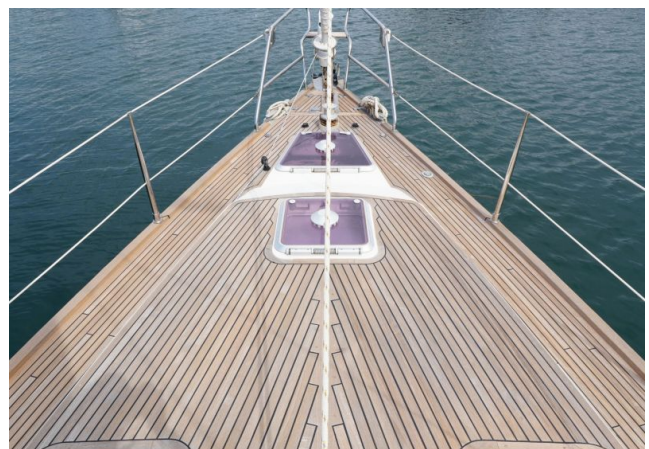


## IMAGES





## IMAGES





## IMAGES



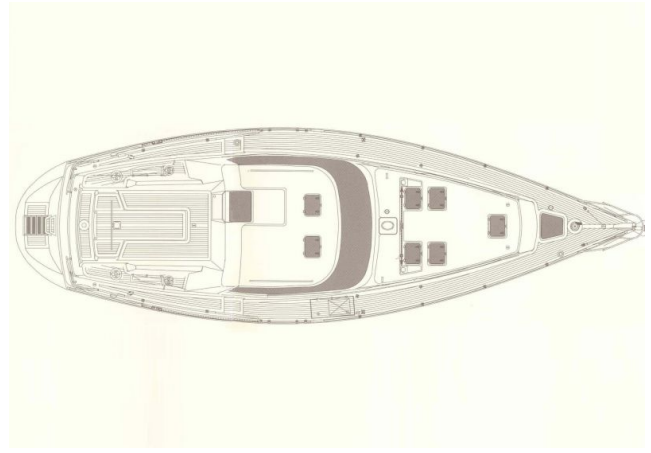
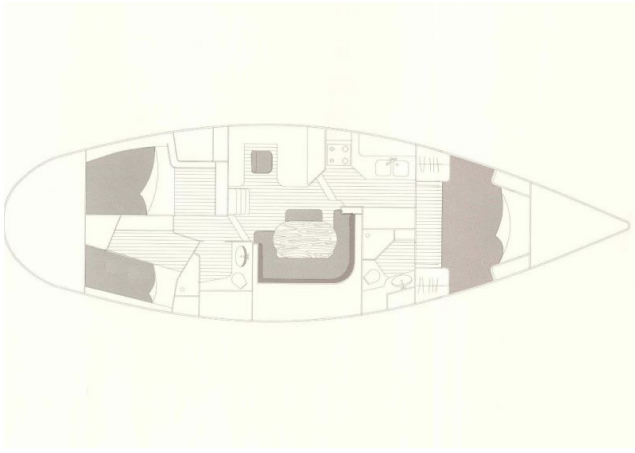


## IMAGES





## IMAGES



## IMAGES

