



# WAUQUIEZ PILOT SALOON 47

Year 2006



DIAMOND

DIAMOND Yachts, Yachtzentrum Baltic Bay  
Börn 17 | 24235 Laboe

# WAUQUIEZ PILOT SALOON 47



**Boat sold.**

## Main Info

|                     |                            |
|---------------------|----------------------------|
| <b>Model</b>        | Wauquiez Pilot Saloon 47   |
| <b>Manufacturer</b> | Wauquiez International SAS |
| <b>Designer</b>     | Berret/Racoupeau           |
| <b>Category</b>     | Decksaloon yacht           |
| <b>Year</b>         | 2006                       |
| <b>Location</b>     | Adria                      |
| <b>Flag</b>         | Croatia                    |
| <b>VAT status</b>   | EU-VAT paid                |
| <b>Material</b>     | GRP                        |
| <b>Rig</b>          | Sloop with furling boom    |
| <b>Cabins</b>       | 3                          |
| <b>Berths</b>       | 6                          |

## Dimensions & Material

|                     |                              |
|---------------------|------------------------------|
| <b>LOA</b>          | 14.36 m                      |
| <b>LWL</b>          | 12.75 m                      |
| <b>Beam</b>         | 4.61 m                       |
| <b>Draft</b>        | 2.35 m                       |
| <b>Displacement</b> | 14 t                         |
| <b>Sail area</b>    | 112 m <sup>2</sup>           |
| <b>Engine</b>       | YANMAR 4JH3-HTE              |
| <b>Power</b>        | 100 PS/74 KW                 |
| <b>Drive</b>        | Shaft with folding propeller |
| <b>Fresh water</b>  | 595 L                        |
| <b>Fuel</b>         | 600 L                        |
| <b>Holding tank</b> | 170 L                        |

## Key Facts

- Fully equipped firsthand owner's yacht.
- Integrated MASTERVOLT power system.
- Pilot Saloon 47 with furling boom.
- 3 cabin layout with Pullmann berths in starboard lateral cabin.
- Spacious, bright decksaloon.
- Electric winches.
- Watermaker.
- Combined WEBASTO airconditioning and diesel heating system.

## Description

Luxurious and seaworthy decksaloon-cruiser built by the French quality yard Wauquiez International SAS. Architect: Berret/Racoupeau Yacht design. Spacious cockpit with two helm stations, Targa arch for mainsheet and free access to the wide folding swim platform. The Pilot Saloon 47 has a bright, cosy decksaloon with elevated saloon floor (360° panorama from the dinette) and saloon upholstery in Alcantara (color: "Commodore Blue"). 3 cabin layout with spacious owner's cabin aft over the entire beam of the yacht. Large, double island berth and owner's heads with separate shower. Forward guest cabin with double berth, starboard lateral cabin with Pullman beds and second heads compartment with separate shower. The Pilot Saloon 47 offers plenty of storage space in lockers, shelves, drawers and under berths. Well finished interior in hand-polished Burma-teak with many beautiful details. This Pilot Saloon 47 has had very little use and is offered by her first owner.

Comprehensive specification including furler boom, electric winches, watermaker, combined airconditioning and diesel heating system by WEBASTO etc. The yacht is equipped with an integrated High Tech MASTERVOLT power management system with diesel generator, inverter, extensive battery bank and control and monitoring electronics. All year except during sailing the Pilot Saloon 47 is under full canvas cover in a freshwater marina and she gets continuous professional care and maintenance. The yacht is offered with all ...



## Rig/Sails

- Deck-stepped, 9/10 fractional SPARCRAFT aluminium mast
- Two sets of aft swept spreaders
- The rig is painted white
- Electric jib furler FURLEX
- Composite furling boom FURLERBOOM
- Cockpit lighting in furling boom
- Furling mainsail NORTH-Sails Soft Norlam XP approx. 62 m<sup>2</sup>
- Self-tacking jib NORTH-Sails Spectra Gatorback approx. 47m<sup>2</sup> with vertical battens
- Gennaker NORTH-Sails G2 approx. 180 m<sup>2</sup> in snuffer
- Code-0 NORTH-Sails Racing Norlam approx. 95 m<sup>2</sup> on FACNOR furling system
- Gennaker gear

## Deck

- Teak on running decks, swim platform and in cockpit
- Two electric genoa winches ANDERSEN 52.2STE
- Electric halyard winch ANDERSEN 46.2STE to starboard
- Electric anchor windlass with chain counter and remote control in cockpit
- Mooring gear: DELTA-anchor 25 kg and 60 m anchor chain 12 mm
- HARKEN track for self-tacking jib
- Large sail locker below foredeck
- Electric seawater deck wash pump
- Large folding cockpit table in teak with storage compartment
- Cockpit lights, cockpit speakers and bimini are mounted in the Targa arch for the mainsheet.
- Sprayhood with grabrail aft
- Bimini with link cloth to sprayhood
- Two teak seats integrated in pushpit
- Teak outboard engine bracket in pushpit
- Wide, folding swim platform with electric drive and remote control
- Four spring cleats
- Swim ladder
- Cockpit shower hot/cold
- LED cockpit lighting in Targa arch

## Layout/Interior

- Bright and cosy decksaloon with large front and side windows
- U-shaped dinette around the folding saloon table to starboard
- Salon upholstery in ALCANTARA (color: "Commodore Blue")
- Galley to port in passage to aft cabin
- Worktop in white CORIAN
- Gimballed electric stove FORCE 10 with ceramic hob (three burners) and oven
- Microwave 230 V
- Fridge (K-System seawater cooling)
- Electric coolbox (K-System seawater cooling)
- Double sink
- Spacious owner's cabin with double island berth and plenty of storage space in lockers, drawers and shelves
- En Suite owner's heads with separate shower cabin to starboard
- Forward cabin with V-shaped double berth
- Lateral cabin with Pullmann berths to starboard
- Guest heads compartment to port forward with separate shower cabin
- Exclusive and well finished interior in hand-polished Burma-teak
- OCEANAIR blinds and mosquito screens in deck hatches
- Venetian blinds for decksaloon windows and hull windows
- LED interior lighting
- Carpet on floors
- Dimmer for salon lighting

## Technical Equipment

- YANMAR 4JH3-HTE 4-cylinder turbo diesel 100 hp/74 KW (operating hours: 1.088 h)
- Continuous engine service as per manufacturer's instructions
- Seawater-lubricated shaft with 3-bladed folding propeller Flex-o-Fold
- Increased diesel tank capacity 600 l
- Bacterial filter for diesel engine and generator
- Bowthruster MAXPOWER 10 hp with 2 x Optima spiral battery
- WEBASTO combined Blue Cool air conditioning and Thermo 90ST diesel heating system
- 230 V shorepower connection with 230 V sockets in interior
- Hot water boiler 42 l
- Fresh water shore connection
- Watermaker 12 V/230 V/100 l/h
- Electric toilet in forward heads compartment
- Holding tanks 85 l with Y-valve, deck connection and sea discharge in both heads compartments
- Safe DOMETIC MD360
- Integrated MASTERVOLT power management system:
  - Combined battery charger/inverter MASTERVOLT Mass Combi 12 V/200 A/4.000 W
  - 5 x gel service battery 12 V/200 Ah
  - AGM starter battery for engine
  - AGM starter battery for generator
  - MASTERVOLT MICC panel
  - Diesel generator MASTERVOLT Wisper 10 Ultra 10 kva (operating hours: 661 h)
  - MASTERVOLT isolation transformer
  - The entire system was designed, installed and commissioned by MASTERVOLT.

## Navigation/Electronics

- Instruments in cockpit:
  - 2 x RAYMARINE ST60 Graphik
  - 2 x ST60 Wind
  - GPS/chartplotter RAYMARINE E120 at cockpit table
- Instruments at chart table:
  - RAYMARINE ST60 Tridata (log and echosounder)
  - Multi function screen RAYMARINE 15" with RAYMARINE USB keyboard
- Autopilot RAYMARINE ST6001+ with gyro-sensor
- RAYMARINE Smartcontrol wireless remote control
- VHF-radio RAYMARINE Ray240E with second station in cockpit and two external speakers
- Radar antenna RAYMARINE 2 KW at mast
- Aktive radar reflector ACTIVE ECHO
- 2 x steering compass
- Weather receiver Navtex ICS6+
- Radio/CD-player with two speakers in saloon and two cockpit speakers
- Clock, barometer, thermometer/hygrometer

## Safety

- Liferaft 8 Pers. Lifeguard Forties (due for service)
- 2 x lifesling
- Fire extinguishers
- Safety equipment (six lifevests, SOS grab bag, wire cutter etc.)
- Manual and electric bilgepumps

### Accessories

- Dinghy (AB inflatable RIB Lammina 8 Ultra Light made of Hypalon)
- Outboard engine HONDA BF2 2 hp 4-stroke
- Stern anchor gear: Fortress anchor with stainless steel anchor chain
- Diving compressor and diving equipment for 2 pers.
- Full-cover (due for overhaul)
- Cover for furling jib
- Cover for Code-0
- Cockpit cushions
- Sun bathing mattress for forward coachhouse roof
- Translucent sunshade covers for deck saloon windows
- Fenders
- Mooring lines
- Covers for steering pedestals and cockpit table
- Spare part/service-kit for main engine and generator
- Crockery and cutlery
- Comprehensive list of other inventory such as Magma grill, Nespresso machine etc.

### Brokerage Liability Disclaimer

All information especially regarding the VAT-status of a yacht has been supplied by third parties. It is non-binding and without guarantee, subject to error and alteration. Our brokerage relies exclusively on information supplied by the vendor carefully compiled and checked by us to the best of our knowledge. Hence, a liability for correctness and completeness of provided information cannot be assumed.



## IMAGES

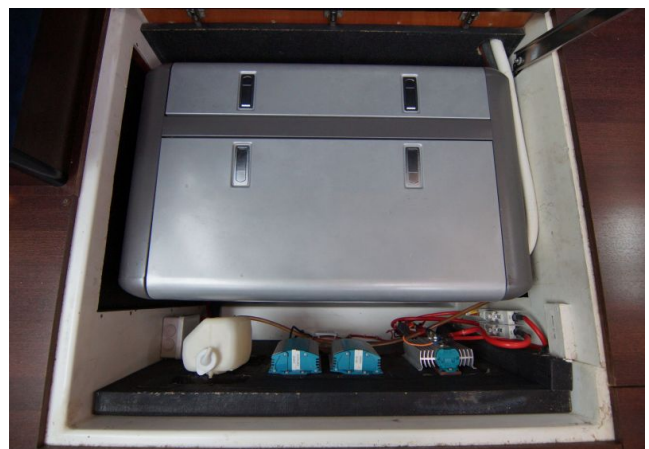
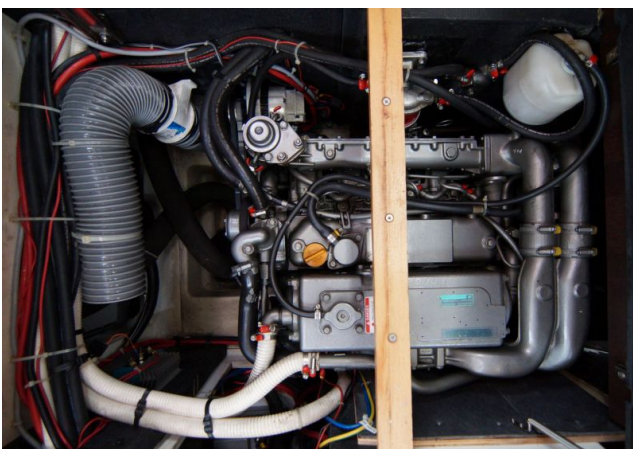




## IMAGES



## IMAGES





## IMAGES



## IMAGES

