



SWEDEN YACHTS 42

Year 2007



DIAMOND

DIAMOND Yachts, Yachtzentrum Baltic Bay
Börn 17 | 24235 Laboe

SWEDEN YACHTS 42



Boat sold.

Main Info

| | |
|---------------------|---------------------|
| Model | Sweden Yachts 42 |
| Manufacturer | Sweden Yachts (SWE) |
| Designer | Peter Norlin |
| Category | Bluewater cruiser |
| Year | 2007 |
| Location | Henån/Westschweden |
| Flag | Sweden |
| VAT status | EU-VAT paid |
| Material | GRP |
| Rig | Sloop |
| Cabins | 3 |
| Berths | 6 |

Dimensions & Material

| | |
|---------------------|----------------------------------|
| LOA | 13.25 m |
| LWL | 11.22 m |
| Beam | 3.90 m |
| Draft | 1.80 m |
| Displacement | 10 t |
| Sail area | 92 m ² |
| Engine | VOLVO PENTA D2-55 |
| Power | 55 PS/40 KW |
| Drive | Saildrive with folding propeller |
| Fresh water | 705 L |
| Fuel | 280 L |
| Holding tank | 60 L |

Key Facts

- Seaworthy yacht for bluewater cruising
- Electric bow and stern anchor windlass
- Exclusive, solid mahogany interior
- Three cabins, two bathrooms
- Wing keel (draft: approx. 1,80 m)
- Retractable bow thruster

Description

The Sweden Yachts 42 is an exclusive, fast and seaworthy bluewater cruiser from the drawingboard of the renowned Swedish yacht designer Peter Norlin. Elegant lines, ergonomic deck layout and traditional Orust boatbuilders tradition characterize Sweden Yachts from Stenungsund. 3 cabin layout with two heads and a beautiful, solid mahogany interior. This Sweden Yachts 42 is a first hand, well maintained and fully equipped owner's yacht. Electric bow and stern anchor windlass, complete RAYMARINE navigation equipment, electric genoa winches and wing keel with a draft of approx. 1,80 m.

Rigging/Sails

- Rigged with a keel stepped, 9/10 fractional SELDEN mast with two pairs of aftswept spreaders (V-spreaders)
- Backstay adjuster
- FURLEX genoa furler
- LED triwhite and anchor light in mast top
- Sails: Full batten mainsail NORTH-Sails Dacron with lazy jacks
- Self-tacking jib NORTH-Sails 3DL Marathon
- Gennaker with snufefr and gennaker gear
- Code-0 (new 2010) with furler

Deck

- Teak on side decks, coachroof, swim platform and in cockpit
- Electric genoa winches ANDERSEN 46.2STE
- Halyard winches ANDERSEN 40ST
- Adjustable genoa sheeting points
- Electric windlass LEWMAR with DELTA anchor 22 kg and 60 m chain 8 mm
- Electric stern anchor winch ENGBO
- Stainless steel BRUCE anchor 20 kg and 40 m lead line
- Cockpit table
- Sprayhood
- Cockpit tent
- Gates in life lines starboard and port
- Spring cleats
- Swim ladder
- Stern shower hot/cold

Layout/Interior

- 3 cabin layout with two heads
- Master cabin forward with large double berth to port
- Additional Swedish mattress toppers and plenty of storage in cabinets and drawers
- Owner's heads with separate shower stall
- Saloon with U-shaped dinette to port around saloon table
- Large charttable with navigator's seat to starboard
- L-shaped galley with SMEV gas stove (3 burners and oven)
- 24 V coolbox 65 l
- Freezer 40 l and double sink
- Symmetrical aft cabins with double berths
- Second aft heads to port
- Very wellbuilt mahogany interior with many beautiful details and a lot of solid wood in best Scandinavian boat builders tradition

Technical Equipment

- Retractable bow thruster MAXPOWER
- VOLVO PENTA D2-55 4 cylinder inboard diesel 55 hp/40 kw
- Saildrive and 3 bladed folding propeller VOLVO PENTA
- 230 V shore power with 230 V sockets below deck
- Battery charger/inverter MASTERVOLT 24 V/60 A/2.000 W
- Alternator 24 V/95 A
- 2nd alternator 12 V/60 A
- 4 service batteries 12 V/135 Ah (capacity: 270 ah at 24 V)
- Starter battery 12 V/85 Ah
- MASTERVOLT battery monitor
- Diesel heating EBERSPÄCHER
- Stainless steel diesel tank 280 l
- 2 stainless steel water tanks with a total capacity of 705 l
- Stainless steel holding tank 60 l
- Hot water boiler 40 l

Navigation / Electronics

- Instruments at chart table: GPS/chartplotter RAYMARINE E80
- Multi-display ST60+ graphic
- NMEA interface
- Cockpit: RAYMARINE ST60+ log, ST60+ depth sounder, ST60+ wind
- GPS/chartplotter RAYMARINE E80
- Autopilot RAYMARINE ST6002 with remote control RAYMARINE Smartcontrol
- Compass
- VHF-radio RAYMARINE Ray240E Dual
- Radar antenna RAYMARINE 2 kw
- AIS transponder
- R[&]R combi-antenna "Panama" (FM/TV/FM/GSM)
- TV 15"
- Radio/CD-player ALPINE with two speakers in saloon and two cockpit speakers
- Ship clock
- Barometer

Safety

- Liferaft 6 pers.
- EPIRB
- Burglar alarm
- 3 fire extinguishers
- Life buoy
- Life lines on deck
- Electric remote switch for gas valve
- Lightning protection system

Accessories

- Boom cover
- Fenders
- Mooring lines

Brokerage Liability Disclaimer

All information especially regarding the VAT-status of a yacht has been supplied by third parties. It is non-binding and without guarantee, subject to error and alteration. Our brokerage relies exclusively on information supplied by the vendor carefully compiled and checked by us to the best of our knowledge. Hence, a liability for correctness and completeness of provided information cannot be assumed.

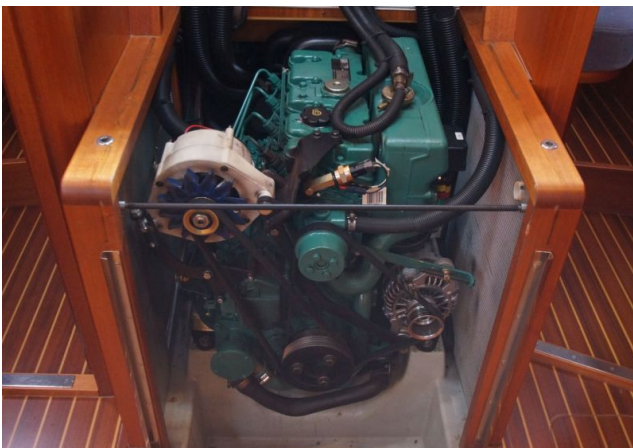
IMAGES



IMAGES



IMAGES



IMAGES



IMAGES

