



# SQ-YACHTS SQ25

Year 2014



DIAMOND

DIAMOND Yachts, Yachtzentrum Baltic Bay  
Börn 17 | 24235 Laboe

# SQ-YACHTS SQ25



**Boat sold.**

## Main Info

<b>Model</b>	SQ-Yachts SQ25
<b>Manufacturer</b>	SQ-Yachts (GER)
<b>Designer</b>	Marc-Oliver von Ahlen
<b>Category</b>	Daysailer
<b>Year</b>	2014
<b>Location</b>	Laboe/Ostsee
<b>Flag</b>	de
<b>VAT status</b>	EU-VAT paid
<b>Material</b>	GRP
<b>Rig</b>	Sloop with carbon mast
<b>Cabins</b>	1
<b>Berths</b>	2

## Dimensions & Material

<b>LOA</b>	7.50 m
<b>LWL</b>	6.92 m
<b>Beam</b>	2.53 m
<b>Draft</b>	1.60 m
<b>Displacement</b>	2.2 t
<b>Sail area</b>	35 m <sup>2</sup>
<b>Engine</b>	VOLVO PENTA D1-13F
<b>Power</b>	13 PS/10 KW
<b>Drive</b>	Shaft with folding propeller
<b>Fresh water</b>	30 L
<b>Fuel</b>	30 L
<b>Holding tank</b>	25 L

## Key Facts

- T-shaped performance-keel 1,60 m.
- VOLVO PENTA inboard diesel.
- Southern Spars carbon rig.
- Exclusive deck gear.
- Steering system with two rudder blades.
- WEBASTO diesel heater.
- Heads compartment.
- Teak interior.

## Description

The SQ25 was the prelude to the new start of the Dehler successor SQ-Yachts in Meschede-Freienohl in the Sauerland region. This multi-talent could be configured according to the customer's wishes with various rigs, interior and deck layouts, keel and rudder versions and different drives.

This allowed the SQ25 to be designed as a sports boat, weekender or handy-size cruiser, depending on the owner's programme. The German architect Marc-Oliver von Ahlen designed a modern hull and a powerful rig, but also remarkably sporty and elegant lines for a boat of this size.

This SQ25 is a fully equipped owner's yacht. Performance keel, twin rudder system, high-quality deck fittings and a carbon fibre rig built by SOUTHERN SPARS emphasise the performance character of the design. Nevertheless, the yacht features a VOLVO PENTA inboard diesel, a separate heads compartment with electric toilet and a galley block to port aft. Elegant and modern appearance with hull and deck in grey.

Beautiful and well finished interior in teak with grey leather upholstery.

## Rig/Sails

- Keel stepped, 9/10 fractional, clear-coated carbon fibre mast by Southern Spars
- One set of aft-swept spreaders
- Standing rigging in rod
- Carbon fibre boom by Southern Spars
- Fixed boom kicker
- Headsail furling system with drum below decks
- Squaretop mainsail UK-Sailmakers approx. 25 m<sup>2</sup> with three full-length battens and two reefs
- Boom cover
- Furling genoa UK-Sailmakers approx. 15 m<sup>2</sup>
- Self-tacking jib UK-Sailmakers approx. 13 m<sup>2</sup>
- Furling jib cover
- Gennaker UK-Sailmakers
- Code-0 UK-Sailmakers
- Gennaker gear

## Deck

- Black ESTHEC composite decking on cockpit floor and seats
- Primary winches HARKEN Performa 20.1STP
- Halyard winches HARKEN Performa 20.1STP
- Exclusive, generously dimensioned HARKEN deck gear
- Rail for self-tacking jib
- Genoa tracks with line-adjustable sheeting points
- Anchor locker
- DELTA anchor 6 kg with 25 m anchor line (8 m of which is lead line)
- Retractable stainless steel mooring cleats fore and aft
- Carbon fibre tiller with tiller extension (RONSTAN Battlestick)
- Wide HARKEN mainsheet traveller
- Cockpit forward and aft storage boxes and compartments in cockpit coaming
- Swim ladder
- Carbon fibre flagpole

## Interior/Layout

- Saloon with two longitudinal sofas and removable and sliding saloon table (can also be used as cockpit table)
- Forward cabin with V-shaped double berth and deck hatch
- Separate heads compartment to starboard aft with washbasin and electric toilet
- Galley block to port aft with spirit cooker, washbasin and storage compartments
- Electric cool box below port seat cushion
- Well finished interior in teak
- Saloon upholstery in grey leather
- Floorboards in ESTHEC

## Technical Equipment

- VOLVO PENTA D1-30 two-cylinder inboard diesel 13 hp/10 KW
- Engine hours (as of December 2021): 58 h
- Shaft drive with 2-bladed folding propeller
- Removable SPINLOCK throttle in cockpit
- Diesel tank 30 l
- 230 V Shore power connection with charging cable
- Battery charger
- Service battery 12 V/100 Ah
- Starter battery 12 V/60 Ah
- 12 V/12 V USB sockets
- Diesel heating WEBASTO
- Electric toilet JABSCO
- LOPOLIGHT LED navigation lighting

## Navigation/Electronics

- 2 x RAYMARINE a6 multifunction displays on coachhouse bulkhead on either side of the companionway
- RAYMARINE i70 display with transducers for log, echo sounder and wind
- Hand-held VHF
- JVC radio/CD/MP3 player
- Clock, barometer, thermometer/hygrometer

## Safety

- Stainless steel railing with one line, pulpit and pushpit
- Jack stays on deck
- Bilge pump

## Accessories

---

- Fenders
- Mooring lines

---

### Brokerage Liability Disclaimer

All information especially regarding the VAT-status of a yacht has been supplied by third parties. It is non-binding and without guarantee, subject to error and alteration. Our brokerage relies exclusively on information supplied by the vendor carefully compiled and checked by us to the best of our knowledge. Hence, a liability for correctness and completeness of provided information cannot be assumed.

# IMAGES



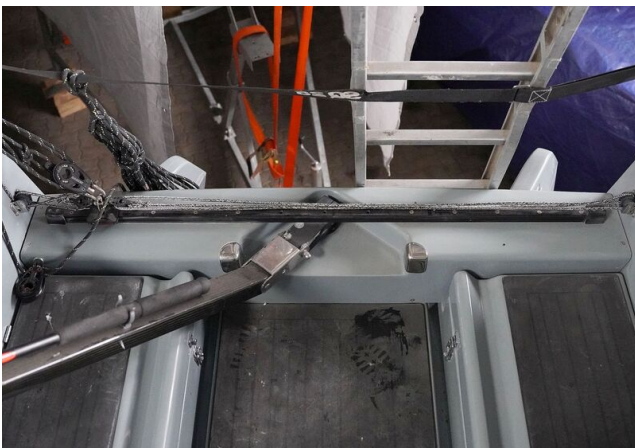
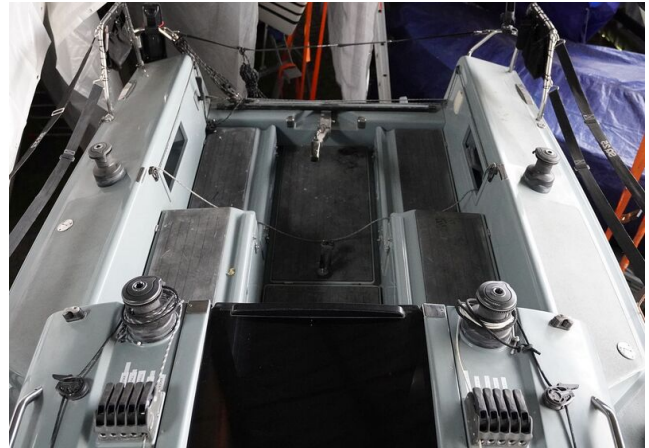
# IMAGES



# IMAGES



# IMAGES



# IMAGES

