



# SOLARIS 55

Year 2018



DIAMOND Yachts, Yachtzentrum Baltic Bay  
Börn 17 | 24235 Laboe

# SOLARIS 55



## Main Info

<b>Model</b>	Solaris 55
<b>Manufacturer</b>	Solaris Yachts Srl. (ITA)
<b>Designer</b>	Javier Soto Acebal
<b>Category</b>	Performance cruiser
<b>Year</b>	2018
<b>Location</b>	Sardinien/Italien
<b>Flag</b>	Austria
<b>VAT status</b>	EU-VAT paid
<b>Material</b>	GRP
<b>Rig</b>	Sloop with carbon mast
<b>Cabins</b>	3
<b>Berths</b>	6

## Dimensions & Material

<b>LOA</b>	16.70 m
<b>LWL</b>	15.78 m
<b>Beam</b>	4.85 m
<b>Draft</b>	3.00 m
<b>Displacement</b>	17.6 t
<b>Sail area</b>	176 m <sup>2</sup>
<b>Engine</b>	VOLVO PENTA D3-110
<b>Power</b>	110 PS/81 KW
<b>Drive</b>	Shaft with MAXPROP
<b>Fresh water</b>	520 L
<b>Fuel</b>	380 L
<b>Holding tank</b>	160 L

## Key Facts

- Custom performance-keel with hollow fin.
- Interior finished in oiled teak.
- Excellent performance.
- HALL-Spars carbon rig.
- Retractable bow and stern thruster.
- Dinghy garage in stern.
- Lithium batteries.
- ESTHEC deck.

## Description

A fast, modern performance cruiser and a reliable and seaworthy cruising yacht. Elegant contemporary, Italian design and a gem of traditional boatbuilder's craftsmanship. The Solaris 55 is all of these, and like all Solaris sailing yachts, this model is an extremely rigid unit. The 40 mm composite main bulkhead, a solid structure of individually laminated beams and stringers vacuum laminated to the hull, and composite chainplates are just some of the technical features that make the Solaris 55 a stiff, monolithic construction. Efficient appendices, a powerful rig and a modern wedge-shaped hull with slim forward section and wide stern with chines provide performance and fun on the water. Clever deck layout with plenty of cockpit space and free passage to sundeck and the large fold-out swim platform. Below decks, an immaculately finished interior with lots of solid wood in the frames, mouldings and profiles creates a warm, cosy atmosphere, yet the uncluttered, spacious and modern layout combined with the large hull windows and numerous deck hatches provide light and space. This Solaris 55 is a fully equipped private yacht offered by her first owner. Very sporty configuration with HALL-Spars carbon fibre rig, exclusive sail wardrobe by DOYLE/Raudaschl and high-quality HARKEN deck gear. 3-cabin layout with teak interior, side bed in the owner's cabin and single berths in starboard aft cabin. Complete technical specification incl. retractable bow and stern thruster, diesel ...

## Construction

- Hull and deck built as a GRP/foam sandwich with E-glass and closed-cell AIREX PVC foam using the vacuum infusion process
- Carbon fibre reinforcements in areas of high stress
- Solid laminate in keel area and in particularly stressed areas
- Extremely rigid structure made of frames and ribs in composite, partially reinforced with carbon fibre fabrics and laminated to the hull with a foam core using the vacuum process, Additional stringers on the hull sides
- Main bulkhead and anchor locker bulkhead in composite laminated to the hull and deck
- Composite chain plates made of bidirectional and unidirectional glass fibres manufactured under vacuum and laminated into the hull and reinforcements
- Other bulkheads and parts of furniture laminated to the hull
- Fixed hull windows made of tinted, hardened security glass
- Custom T-shaped performance keel (draft: approx. 3,00 m) with Weldom hollow fin and lead bulb with very wide flange for connection to the hull
- Two balanced, slim spade rudders in fibreglass with AIREX foam core with stainless steel rudder stock with stainless steel reinforcements welded to shaft
- SOLIMAR steering system with two self-aligning rudder bearings and protected and easily accessible quadrants
- Hull painted in light grey polyurethane paint with white water line

## Rig/Sails

- Keel-stepped, 9/10-fractional HALL-Spars carbon fibre mast
- Three sets of aft-swept spreaders
- Standing rigging in rod
- Hydraulic mast jack
- carbon fibre Hayrack boom by HALL-Spars with hydraulic cylinder for outhaul
- Hydraulic HARKEN boom vang
- Hydraulic cylinder for cunningham
- Hydraulic HARKEN backstay adjuster with two cylinders
- Central HARKEN hydraulic panel for backstay, outhaul, vang and cunningham
- RECKMANN genoa furling system with drum below decks
- Preparation for staysail (jib, 2:1 halyard, check stays)
- HARKEN genoa tracks with line-adjustable genoa cars
- HARKEN self-tacking jib track with traveller
- LED 3-colour light in mast top
- Integrated carbon fibre bowsprit with bobstay for gennaker or Code-0
- Fully battened mainsail DOYLE/Raudaschl Stratis approx. 99 m<sup>2</sup> with three reefs
- HARKEN Switch Track-system with sliders for mainsail
- Lazy jacks and boom cover
- Furling genoa DOYLE/Raudaschl Stratis approx. 84 m<sup>2</sup> with UV-protection
- Self-tacking jib DOYLE/Raudaschl Stratis approx. 69 m<sup>2</sup> with UV-protection
- Furling staysail DOYLE/Raudaschl Stratis approx. 34 m<sup>2</sup>
- Storm jib
- Trysail
- Code-0 DOYLE/Raudaschl cableless approx. 188 m<sup>2</sup> on KARVER furling system
- Gennaker DOYLE/Raudaschl A2 approx. 250 m<sup>2</sup> in snuffer
- Furling gennaker DOYLE/Raudaschl A3 approx. 215 m<sup>2</sup>
- Gennaker gear incl. 2:1 Code-0 halyard

## Deck

- ESTHEC deck on running decks, coachhouse roof, swim platform and in cockpit (colour: "champagne" with light grey stripes)
- Wide, electro-hydraulic folding swim platform with swim ladder and radio remote control
- Spacious lazarette as tender garage below aft deck with access via a wide opening in transom behind the swim platform and via a central deck hatch in cockpit floor
- Fold-out stainless steel anchor fitting with gas spring (mooring gear and anchor fitting disappear completely below decks in anchor locker)
- Electric anchor windlass LEWMAR V4/V5 2.000 W below decks with radio remote control
- Mooring gear: Stainless steel Ultra-anchor 35 kg with 75 m galvanised anchor chain 10 mm
- Large, self-draining anchor locker
- Spacious sail locker below foredeck
- Retractable electric mooring winch on foredeck
- 4 retractable SeaSmart mooring cleats
- 4 retractable SeaSmart spring cleats amidships
- Railing gates to starboard and port
- Flush integrated SOLIMAR deck hatches
- Two steering pedestals with large instrument consoles and black carbon fibre steering wheels
- Removable footrests for helmsman behind steering pedestals
- Four-electric winches HARKEN Performa 70.2STEP on winch consoles forward of helm stations
- Two HARKEN Performa 70.2STP gennaker winches aft on side decks
- Two halyard stowage pockets at winch consoles
- Sprayhood (disappears when folded down flush in a ditch)
- Bimini for forward cockpit
- Bimini aft over helm stations
- Sun awning (attached to boom)
- Folding cockpit table with teak sides and stainless steel base
- Cockpit shower hot/cold

## Layout/Interior

- 3-cabin layout with owner's cabin forward and two heads compartments
- Exclusive, very well finished interior in oiled teak with teak floorboards and white-covered panels and ceiling panelling
- Saloon with U-shaped dinette to port and two poufs at tsaloon table (table can be lowered and be converted to double berth)
- Longitudinal sofa to starboard
- Forward facing chart table with navigator's seat to starboard aft
- Four hull windows in saloon
- L-shaped galley to port aft
  - Worktop in white CORIAN
  - Electric cool box approx. 130 litres
  - Refrigerator with two drawers approx. 90 litres
  - Double sink
  - Induction hob (3 burners and oven)
- Owner's cabin with double berth to port, bench seat, storage compartments, drawers and lockers
- En-suite owner's heads in forepeak with sink, separate shower and electric toilet
- Hull windows in owner's cabin
- Port Aft cabin with double berth, locker and storage compartments
- Starboard Aft cabin with two single berths
- Second heads compartment to starboard aft with sink, separate shower and electric toilet
- Utility room with washing machine to port aft
- OCEANAIR blinds and mosquito screens in deck hatches
- Vanitiy tops in both heads compartments in carbon look
- LED interior lighting
- Indirect LED lighting



## Technical Equipment

- VOLVO PENTA D3-110 5 cylinder inboard diesel 110 hp/81 KW (engine upgrade)
- Engine hours (as of May 2024): 994 h
- Shaft drive with 5-blade feathering propeller MAXPROP
- Line cutter on propeller shaft
- Stainless steel diesel tank approx. 380 l
- EVC (Electronic Vessel Control) with 4" control display and electronic engine throttle on console at starboard steering pedestal
- Easily accessible engine compartment clad with perforated aluminium panels, sound insulation with special insulation mats, manual fire protection system for engine room
- MASTERVOLT Alpha 24 V/110 A alternator and second 12 V alternator
- Retractable bow thruster SIDEPOWER SRV100
- Retractable stern thruster SIDEPOWER SRV100
- Fischer Panda 8000i diesel generator (operating hours as of January 2024: approx. 20 h) with lithium starter battery LifePro4 (new 2021) 230 V shore connection 32 A with charging cable 24 V on-board power supply (conventionally wired) with additional digital control and monitor on chart table
- 230 V and 12 V/USB sockets in interior
- 2 x combined battery charger and inverter MASTERVOT Mass Combi Ultra 24 V/3,500 W/100 A
- Lithium service battery bank:  
2 x MASTERVOLT MLI5500  
2 x MASTERVOLT MLI5000
- Lithium starter battery LifePo4 (new 2020)
- Flush-mounted solar panels SOLBIAN Flex 536 Wp on coachhouse roof
- Solar panels on bimini 900 Wp
- Watermaker SCHENKER Modular 24 V/150 l/h
- Stainless steel fresh water tank approx. 520 l
- Hot water boiler 30 l
- Washer-dryer Miele Marine 230 V
- Air conditioning CLIMMA DC40 40.000 BTU for all cabins
- 2 x electric toilet Planus 24 V
- 2 x stainless steel holding tank approx. 80 l with deck connection and sea discharge
- LED navigation lights

## Navigation/Electronics

- BROOKS [&] GATEHOUSE H5000 system
  - B[&]G H5000 Hercules processor
  - 2 x B[&]G H5000 display
  - Transducers for log, echo sounder and wind
  - B[&]G Triton display at helm station
  - B[&]G Forward Scan sonar transducer
  - B[&]G H5000 barometric sensor
- 3 x GARMIN GNX-130 Maxi display in carbon fibre bracket on mast
- B[&]G H5000 autopilot with Precision 9 compass and gyro sensor
- Compass on both steering pedestals
- 12" multifunction display B[&]G Zeus<sup>3</sup> on chart table
- 2 x 9" multifunction display B[&]G Zeus<sup>3</sup> in consoles on steering pedestals
- GPS-receiver B[&]G ZG100
- Radar antenna B[&]G Halo 20+ on mast
- AIS Class B-transponder NAIS500
- VHF-radio B[&]G V50 with second wireless control unit V50
- SIMRAD Go-Free WLAN access point
- Marine Entertainment System FUSION MS-AV755 CD/DVD/AM/FM/USB with loudspeakers in saloon and cockpit speakers
- TV with electric lift in saloon
- WIFI 4G antenna with router
- Satellite communication Fleet One

## Safety

- Life raft 10 persons in container
- JONBOY rescue module
- EPIRB
- Signal horn on mast
- Manual and 3 x electric bilge pumps
- Fire extinguishing system in engine compartment
- Fire extinguishers



### Accessories

---

- Dinghy: Takacat 280L catamaran 24 kg with TORQEEDO electric outboard engine
- Inflatable fenders
- Folding carbon fibre gangway
- Mooring lines

---

#### Brokerage Liability Disclaimer

All information especially regarding the VAT-status of a yacht has been supplied by third parties. It is non-binding and without guarantee, subject to error and alteration. Our brokerage relies exclusively on information supplied by the vendor carefully compiled and checked by us to the best of our knowledge. Hence, a liability for correctness and completeness of provided information cannot be assumed.

## IMAGES





## IMAGES





## IMAGES

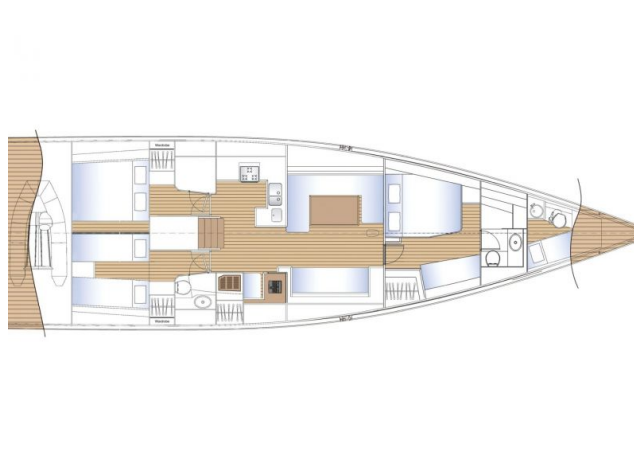




## IMAGES



## IMAGES





## IMAGES





## IMAGES

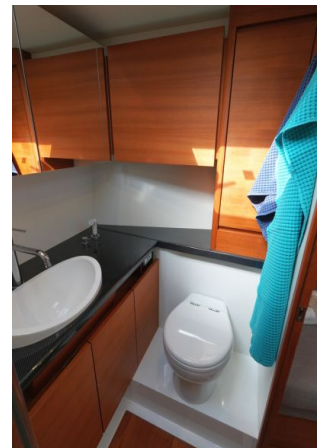
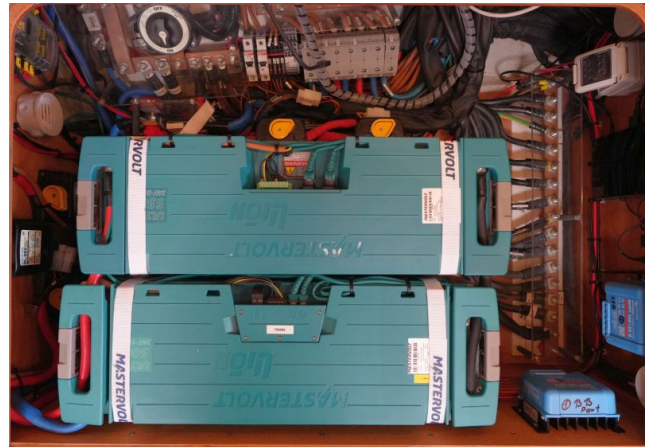


## IMAGES





## IMAGES



## IMAGES

