



# SAFFIER SE 27 LEISURE

Year 2020

 **DIAMOND**

DIAMOND Yachts, Yachtzentrum Baltic Bay  
Börn 17 | 24235 Laboe

# SAFFIER SE 27 LEISURE



**Boat sold.**

## Main Info

<b>Model</b>	Saffier SE 27 Leisure
<b>Manufacturer</b>	Saffier Maritiem b.v. (NED)
<b>Designer</b>	Dean Hennevanger
<b>Category</b>	Daysailer
<b>Year</b>	2020
<b>Location</b>	Laboe/Ostsee
<b>Flag</b>	de
<b>VAT status</b>	EU-VAT paid
<b>Material</b>	GRP
<b>Rig</b>	Sloop with carbon mast
<b>Cabins</b>	1
<b>Berths</b>	4

## Dimensions & Material

<b>LOA</b>	9.05 m
<b>LWL</b>	7.40 m
<b>Beam</b>	2.60 m
<b>Draft</b>	1.65 m
<b>Displacement</b>	1.9 t
<b>Sail area</b>	42 m <sup>2</sup>
<b>Engine</b>	TORQEEDO Pod 4.0
<b>Power</b>	4 KW
<b>Drive</b>	Saildrive with folding propeller
<b>Holding tank</b>	30 L

## Key Facts

- Performance-keel (draft: approx. 1,65 m).
- Blue hull with white decoration.
- Excellent performance.
- Easy handling.
- Electric HARKEN winches.
- Gennaker and code-0.
- ESTHEC deck.
- Carbon mast.

## Description

Modern, elegant and fast daysailer built by Saffier Maritiem in Ijmuiden on the Dutch coast of the North Sea. The Saffier SE 27 Leisure offers sparkling fun on the water thanks to her excellent performance and childproof easy handling. All halyards, sheets and control lines are led back to the two winches in front of the steering wheel. That in combination with the self-tacking jib makes the boat suitable for single-handed sailing. Nevertheless, the spacious cockpit offers plenty of space to entertain passengers and gives free access to the aft sun deck. A TORQEEDO 4.0 Pod electric drive takes you home if the wind dies on you and makes port maneuvers easy. Her sleek lines, low freeboard and flat, angular coachhouse will turn the heads of any enthusiast for elegant yacht design. More information about this daysailer in general can be found here on our website: Saffier SE 27 Leisure. Fully equipped Saffier SE 27 Leisure with performance lead keel (draft: approx. 1.65 m, ballast: approx. 750 kg). Blue hull and deck with white decoration and ESTHEC deck (colour "Bisquit" with white stripes). Interior with hull windows, marine toilet below forward berth and electric coolbox below companionway. Complete specification incl. carbon fibre mast, electric HARKEN winches, RAYMARINE instruments and autopilot, cockpit upholstery etc. Exclusive sail wardrobe by ELVSTRÖM: Main and self-tacking jib in EPEX (both new 2023), gennaker and code-0. The Saffier SE 27 is moored here in front of our ...

## Rig/Sails

- Deck-stepped, 9/10 fractional, clear coated SELDEN carbon fibre mast
- Two sets of aft-swept spreaders
- Standing rigging in rod
- Black varnished SELDEN aluminium boom with 1 line reefing system (two reefs)
- Black varnished SELDEN kicker
- Headsail furling system FURLEX with drum below decks
- Adjustable backstay
- 3 colour light in top
- Fixed carbon fibre gennaker pole with bob stay
- Mainsail ELVSTRÖM EPEX black approx. 24 m<sup>2</sup> (new 2023)
- HARKEN track and slide system for mainsail
- Lazy bag and lazy jacks
- Self-tacking jib ELVSTRÖM EPEX black approx. 15 m<sup>2</sup> (new 2023) with vertical battens
- Gennaker ELVSTRÖM (colour: white) approx. 65 m<sup>2</sup>
- Code-0 ELVSTRÖM (colour: white) approx. 40 m<sup>2</sup> with furling system
- Gennaker gear

## Deck

- ESTHEC composite deck (colour "Bisquit" with white stripes) on running decks, aft deck and in cockpit
- HARKEN self-tacking track in front of mast
- Two electric primary winches HARKEN 40.2STEA
- Two gennaker winches HARKEN 20.2STA
- HARKEN mainsheet traveller and German mainsheet system
- Halyard stowage boxes in cockpit
- Steering pedestal with black painted GRP-steering wheel (three spokes)
- Self-draining anchor locker
- Large deck locker below aft deck
- Curved windscreen forward of cockpit
- Retractable mooring cleats and spring cleats
- Removable swim ladder
- Winged flag pole with flag

## Layout/Interior

- Hull windows
- Double berth forward
- Two single berths/seats to starboard and port
- Marine toilet with holding tank below forward berth
- Fridge drawer below companionway step
- Overhead lighting
- Indirect LED lighting above floorboards and on hull sides
- Storage in lockers below berths
- Upholstery in light grey

## Technical Equipment

- TORQEEDO Pod 4.0 electric propulsion with TORQEEDO Power 48/5000 lithium battery
- Pod drive with Flex-o-Fold folding propeller
- Engine panel and throttle in cockpit to starboard
- All charging and battery technology for the electric propulsion system is separated from the domestic 12 V on-board system
- 230 V shore power connection with earth leakage circuit breaker and charging cable
- Battery charger 12 V/15 A
- Service battery 12 V/100 Ah
- 230 V and 12 V/USB socket in interior
- Marine toilet with holding tank

## Navigation/Electronics

- 2 x RAYMARINE i70 instrument display in bracket on mast
- Transducers for log, echo sounder and wind
- RAYMARINE autopilot with electric linear drive below decks and p70 control unit in cockpit

## Safety

- Bilge pump
- Fire extinguisher

### Accessories

---

- Canvas cover for steering wheel
- Canvas hose for furling jib
- Covers for winches
- Cockpit cushions with backrests
- Sunbed cushions for aft deck
- ROCNA anchor 6 kg with anchor line
- Fenders
- Mooring lines

---

#### Brokerage Liability Disclaimer

All information especially regarding the VAT-status of a yacht has been supplied by third parties. It is non-binding and without guarantee, subject to error and alteration. Our brokerage relies exclusively on information supplied by the vendor carefully compiled and checked by us to the best of our knowledge. Hence, a liability for correctness and completeness of provided information cannot be assumed.

# IMAGES



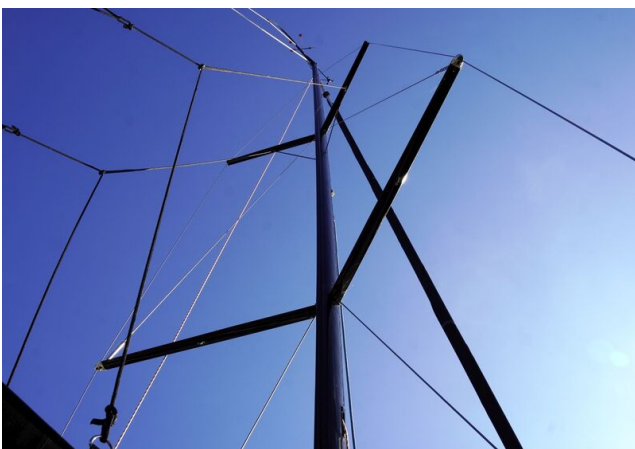
# IMAGES



# IMAGES



# IMAGES



## IMAGES

