



REGINA 43

Year 2004



DIAMOND Yachts, Yachtzentrum Baltic Bay
Börn 17 | 24235 Laboe

REGINA 43



Boat sold.

Main Info

Model	Regina 43
Manufacturer	Regina af Vindö Yachts AB
Designer	Carl Beyer
Category	Decksaloon yacht
Year	2004
Location	Deutsche Ostseeküste
Flag	Germany
VAT status	EU-VAT paid
Material	GRP
Rig	Sloop with furling mast
Cabins	3
Berths	8

Dimensions & Material

LOA	13.88 m
LWL	11.00 m
Beam	3.98 m
Draft	1.80 m
Displacement	12.5 t
Sail area	91 m ²
Engine	YANMAR 4JH3-TE
Power	75 PS/55 KW
Drive	Welle mit Faltpropeller
Fresh water	800 L
Fuel	360 L
Holding tank	160 L

Key Facts

- Bright Decksaloon with 360° panorama.
- Electric furling mast and electric winches.
- Traditional Scandinavian quality.
- Regina 43 in 3 cabin layout.
- Extensive specification.
- Bowthruster.

Description

Sturdy and seaworthy decksaloon-cruiser built by Regina af Vindö Yachts (formerly Rex Marine AB) on the island of Vindö in the western Swedish archipelago. Traditional Scandinavian boatbuilder's quality and exclusive mahogany interior with lots of solid wood and beautiful details. Bright decksaloon with elevated saloon floor and full 360° panorama when seated in dinette or at the big chart table. Regina 43 in optional 3 cabin layout with a spacious owner's cabin aft over the entire beam of the yacht and lateral cabin below decksaloon to port. Well maintained, very well equipped firsthand owner's yacht. Every winter in indoor storage and continuous technical maintenance and service. Electric inmast furling (new 2012), selftacking jib, four electric winches and bowthruster make it easy to handle the yacht shorthanded.

Rigging/Sails

- Keel stepped, 9/10 fractional, electric furling SELDEN mast (new in 2012)
- Two sets of aft swept spreaders
- Manual backstay adjuster
- FURLEX genoa furler
- Spinnaker pole stowed on mast
- Rail for self-tacking jib
- Aluminum tubes for rigging screws
- Isolated backstay
- Running backstay
- Gennaker gear
- Furling mainsail Dyneema laminate triradial Co-Sails approx. 45 m² (new 2012) with vertical battens
- Furling genoa II Spectra Lundh-Sails approx. 52 m²
- Self-tacking jib Dyneema laminate triradial Co-Sails approx. 33 m² (new 2010) with UV-protection
- Furling gennaker UK-Sailmakers approx. 126 m² (new 2007) with BARTELS furler (in addition there is a snuffer)

Deck

- Teak deck on running decks, forward coachhouse roof, swim platform and in cockpit
- Electric anchor windlass LOFRANS 1.000 W
- Mooring gear: Stainless steel CQR-anchor 25 kg, 20 m stainless steel anchor chain 10 mm and 40 m anchor rope
- Electric genoa winches ANDERSEN 58.2STE
- Electric mainsheet winches ANDERSEN 46.2STE
- Swedish bowsprit in teak and stainless steel with anchor roller, bow ladder and bobstay
- Laminated rubbing strake
- Stainless steel mooring cleats and spring cleats
- Gates in lifelines to starboard and port
- Stand baskets on mast made of stainless steel tube
- Sprayhood
- Cockpit cover
- Folding cockpit table
- Swimpladder
- Stern shower hot/cold

Layout/Interior

- Bright decksaloon with U-shaped dinette around saloon table to port
- Forward facing chart table to starboard
- Three steps down in front of the saloon there is the galley to port
- Gas stove (2 burners and oven)
- 2 x electrical coolbox
- Double sink with additional manual seawater foot pump
- Ample storage space
- Opposite to starboard there is an L-shaped sofa with a dining table
- Forward cabin with V-shaped double berth, lockers
- Forward heads compartment to port
- Spacious aft cabin with double berth to port, single berth to starboard and plenty of storage space in lockers and drawers
- Owner's heads to starboard with separate shower

Technical Equipment

- YANMAR 4JH3-TE 4 cylinder turbo diesel 75 hp/55 kw
- Shaft drive, 3-bladed folding propeller Flex-o-Fold 18"
- Stainless steel diesel tank approx. 360 l
- Microcommander throttle with second station at chart table
- Bowthruster
- 230 V shore power connection with outlets throughout the yacht
- Battery charger MASTERVOLT 12 V
- 5 x AGM service battery 12 V/100 Ah
- Starter battery 12 V/60 Ah
- Diesel heating EBERSPÄCHER D5L with outlets in all compartments
- Hot water boiler 230 V/40 l
- 2 x stainless steel holding tank approx. 80 l with deck connection and sea discharge
- Safe in master cabin.

Navigation/Electronics

- RAYMARINE ST60 Wind
- ST60 VMG/Close Hauled
- ST60 Log
- ST60 Depth sounder
- ST60 Multi display
- GPS/chartplotter RAYMARINE E80
- Compass
- Autopilot RAYMARINE ST6001
- PC monitor at chart table as second display for the plotter with RAYMARINE keyboard
- RAYMARINE ST60 Multi display
- Second autopilot control unit RAYMARINE ST8001
- AIS receiver
- VHF RAYMARINE Ray55 Dual
- NOKIA car phone fixed installation with mast antenna
- Marine decoder Fastnet FMD25
- Radio/CD-player BLAUPUNKT with speakers in saloon and cockpit
- Barograph
- Clock

Safety

- Liferaft SEASAFE 4 pers. in quick launch bracket on pulpit
- Horseshoe
- Lifesling
- Fire extinguisher
- Manual and electric bilge pump

Accessoires

- Storage cradle
- Light dust cover
- Fenders
- Mooring lines

Brokerage Liability Disclaimer

All information especially regarding the VAT-status of a yacht has been supplied by third parties. It is non-binding and without guarantee, subject to error and alteration. Our brokerage relies exclusively on information supplied by the vendor carefully compiled and checked by us to the best of our knowledge. Hence, a liability for correctness and completeness of provided information cannot be assumed.

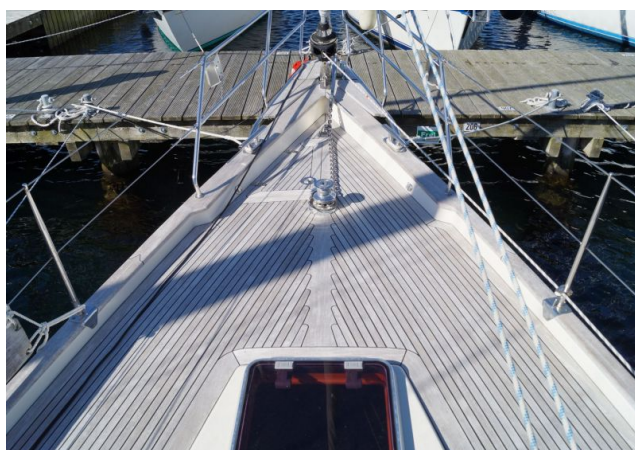
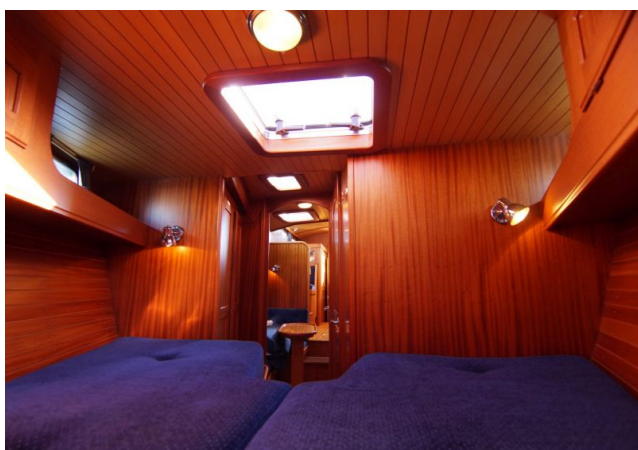
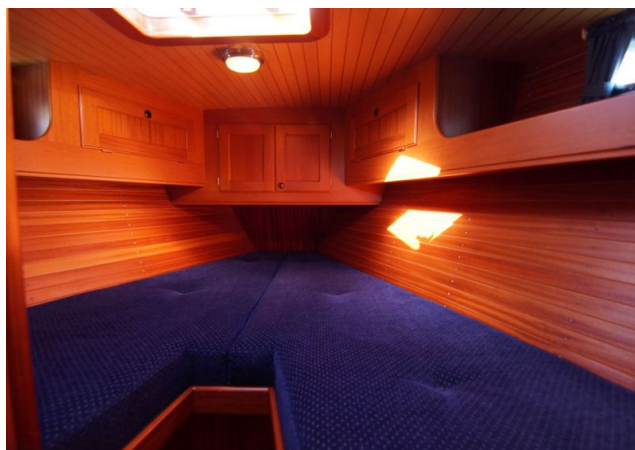
IMAGES



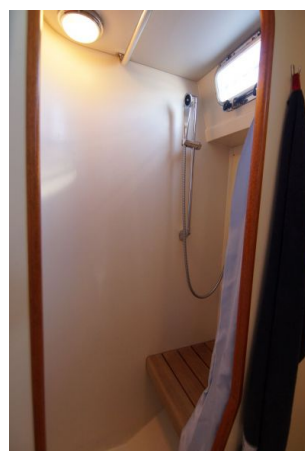
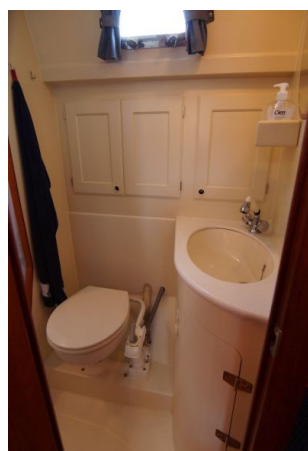
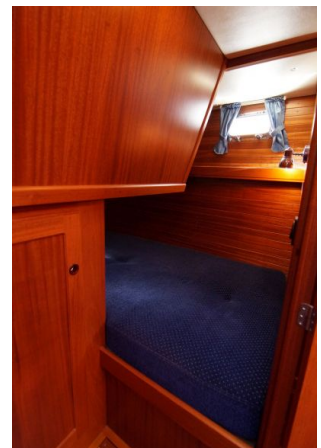
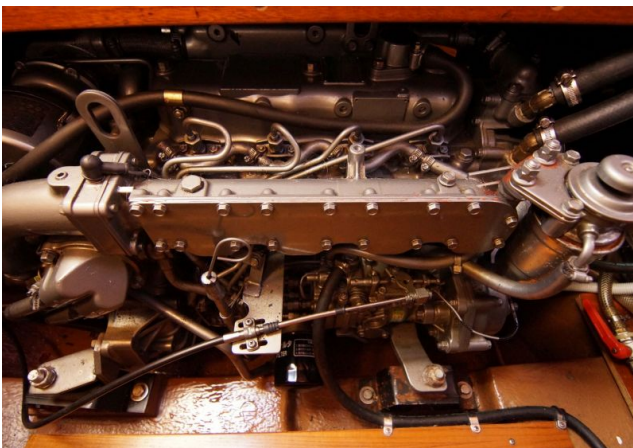
IMAGES



IMAGES



IMAGES



IMAGES

