



PREMIER 45

Year 2014



DIAMOND

DIAMOND Yachts, Yachtzentrum Baltic Bay
Börn 17 | 24235 Laboe

PREMIER 45



Boat sold.

Main Info

Model	Premier 45
Manufacturer	Premier Composites
Designer	Botin & Carkeek Partners
Category	Performance cruiser
Year	2014
Location	Sardinien
Flag	Malta
VAT status	EU-VAT paid
Material	E-glass/carbon
Rig	Sloop with carbon mast
Cabins	3
Berths	6

Dimensions & Material

LOA	13.72 m
LWL	12.94 m
Beam	4.15 m
Draft	1.80 - 2.80 m
Displacement	9.5 t
Sail area	120 m ²
Engine	VOLVO PENTA D2-55
Power	55 PS/40 KW
Drive	Saildrive with folding propeller
Fresh water	300 L
Fuel	215 L
Holding tank	122 L

Key Facts

- Lifting keel draft: approx. 1,80 - 2,80 m.
- Exclusive hight-tech construction.
- Southern Spars carbon rig.
- Sublime performance.
- Very well kept, perfect condition.
- Contemporary bright interior.
- Lithium service battery bank.
- Hydraulic headsail furler.

Description

Performance and construction like a racer, comfort equipment and volume like a cruiser - this balancing was achieved by designer Marcelino Botin and Premier Composite Technologies when introducing the Premier 45. A light, stiff, high-tech performance-cruiser with exclusive top shelf components that offers plenty of living space and comfort. And the whole package comes in modern, spectacular design with a contemporary, functional but cosy interior. In addition to her comprehensive list of options, this Premier 45 was modified at the shipyard with numerous individual details and intelligent solutions. The yacht has an electro-hydraulic lifting keel with a draft of approx. 1.80 - 2.80 m as well as a Southern Spars carbon fibre rig (including boom and spreaders in carbon). When specifying this yacht, focus was put on simple, safe handling by a small crew. The Premier 45 has a hydraulic headsail furling system, central hydraulics for backstay, kicker and outhaul and a retractable bow thruster. Below decks an airconditioning system, diesel heating and an induction stove create comfort and two lithium service batteries ensure a high level of autonomy. The yacht was repainted in 2019 and is in excellent technical and cosmetic condition.

Construction

- Hull in E-glass/carbon-sandwich laminated in vacuum infusion-process, reinforced with Epoxy/Corecell M-Foam
- Deck in full carbon laminated in vacuum infusion-process with epoxy resins
- Higher foam density both in more heavily loaded impact areas (bow section) and in the chainplate areas (chainplates additionally reinforced by embedded carbon plates)
- Laminated chainplates made of carbon, forestay fittings made of carbon fiber and stainless steel
- Structural bulkheads made of sandwich with a painted finish
- Hull and deck painted in AWL-Grip white (repainted in 2019) with black decorative stripes
- T-shaped, electro-hydraulic lifting keel with welded hollow steel fin and CNC-machined, antimony hardened lead bulb (ballast: approx. 3.340 kg). Hydraulic system by Cariboni
- Keel box made of full carbon carbon
- Rudder blade with carbon rudder shaft and carbon rudder quadrant, two carbon fiber steering wheels and steering pedestals made of painted composite material, steering system with chain transmission and Spectra ropes

Rigg/Sails

- Keel stepped, 9/10 rigged Southern Spars carbon fiber mast
- 2 sets of aft-swept carbon fibre spreaders
- Southern Spars carbon fiber boom with hay racks made of carbon
- Standing rigging in rod
- Hydraulic mast jack
- PBO backstay
- Running rigging in Spectra
- Electro-hydraulic RECKMANN genoa furling system with drum below decks and manual safety pump in cockpit
- Central electro-hydraulic system for backstay, outhaul and boom vang with control panel on both steering pedestals
- Retractable carbon fiber gennaker pole
- Mainsail NORTH-Sails 3Di 780 19,600 DPI approx. 70 m²
- Second fully battened mainsail NORTH-Sails Spectra/Carbon (new 2019)
- HARKEN track and car system for mainsail
- Lazy Jacks with lazy bag and additional boom cover
- Furling genoa 105 % NORTH-Sails 3Di 780 22,400 DPI approx. 55 m² with UV-protection
- Furling genoa cover
- Code-0 NORTH-Sails Twaron CZ30 incl. KARVER KF2 furling system
- Gennaker gear
- Storm jib NORTH-Sails (never used)

Deck

- Teak deck on cockpit floor and cockpit seats
- Electric anchor windlass 1.500 W below decks with remote control in cockpit
- Folding bow anchor fitting with gas spring
- Mooring gear: Stainless steel DELTA-anchor 20 kg with 40 m stainless steel anchor chain 8 mm
- Genoa winches HARKEN 60.2STA
- German mainsheet system with mainsheet winches HARKEN 60.2STA
- Electric halyard winch HARKEN 50.2STAE to starboard on coachhouse
- Pulpit, pushpit and stanchions made of composite in clear carbon finish with Spectra lines
- Folding NOMEN mooring cleats and spring cleats
- Two large deck lockers in cockpit floor
- Folding swim platform with teak deck and swim ladder
- Sprayhood with carbon fiber tubes
- Cockpit bimini with carbon fiber tubes and side panels
- Cockpit shower hot/cold
- Carbon fiber cockpit table (dual use as saloon table) with U-shaped bracket as support in cockpit

Interior/Layout

- Bright, cosy and modern interior made of very light and high-strength composite material painted white or with ALPI oak veneer
- Spacious saloon with L-shaped sofa and two DEDON chairs to port side forward at folding carbon fiber saloon table
- Lots of light in the saloon through four hull windows, coachhouse windows and four deck hatches
- Chart table to port aft with electric panel and navigation instruments
- Longitudinal galley to starboard
 - CORIAN worktop
 - SIEMENS gimbal induction stove
 - Panasonic oven with microwave
 - Stainless steel double sink
 - 150 l refrigerator
 - Storage space in drawers and lockers
- Generous forward owner's cabin with double berth (new spring mattresses), two hull windows and storage space in hanging lockers, lockers on hull sides and compartments below berth
- Owner's heads to port side with separate shower, CORIAN vanity table with carbon washbasin and electric toilet
- Two symmetric aft cabins with double berths, hanging locker, lockers on hull sides and storage compartments below berths
- Guest heads compartment to starboard with CORIAN vanity top and carbon washbasin as well as electric toilet
- Floorboards made of carbon with LED light strips
- Blinds and mosquito screens in deck hatches
- LED interior lighting

Technical Equipment

- VOLVO PENTA D2-55 4 cylinder inboard diesel 55 hp/40 KW
- Saildrive (new 2019) with 3-bladed GORI folding propeller
- Retractable bow thruster SIDEPOWER
- 230 V shore power connection with 230 V sockets below decks
- Battery charger MASTERVOLT Chargemaster 12/25-3
- Combined battery charger and inverter MASTERVOLT MassUltra 12 V/150 A/3.000 W
- Additional alternator MASTERVOLT 12 V/130 A
- Two MASTERVOLT MLI Ultimate 12/2500 lithium service batteries (new 2017)
- Four starter batteries Victron AGM deep cycle 12 V/110 Ah
- MASTERVOLT Czone bus system for domestic electrics with Czone 3.5" control display at chart table
- Galvanic isolating transformer
- Airconditioning WEBASTO 20.000 BTU
- Diesel heating WEBASTO
- Hot water boiler 40 l
- Two electric toilets with holding tank
- LED navigation lights

Navigation/Electronics

- BROOKS [&] GATHOUSE Herkules H5000 system with GPS, fluxgate compass and transducers for log, echo sounder and wind
- Four B[&]G 20/20 maxi displays in console on mast
- Two B[&]G FFD displays on steering pedestals
- Two B[&]G Zeus³ chart plotters 9" (new 2019) in the back of the cockpit coamings in front of steering pedestals
- B[&]G chart plotter 12" at chart table
- Autopilot with B[&]G ACP course computer and JEFA drive
- VHF-radio B[&]G
- AIS-transceiver
- Two Mobotix cameras below first spreaders
- Mobotix camera in saloon
- Apple iMac computer 21.5"
- Bang [&] Olufsen HiFi-system in saloon

Safety

- Liferaft in storage compartment in cockpit floor
- Jon Buoy MOB module on pushpit
- Fire extinguisher
- Jack stays on running decks
- Two manual bilge pumps and three electric bilge pumps
- Alarm system C-Pod with GeoFence (battery monitoring, bilge sensor, motion detector) alarm via eMail/SIM card

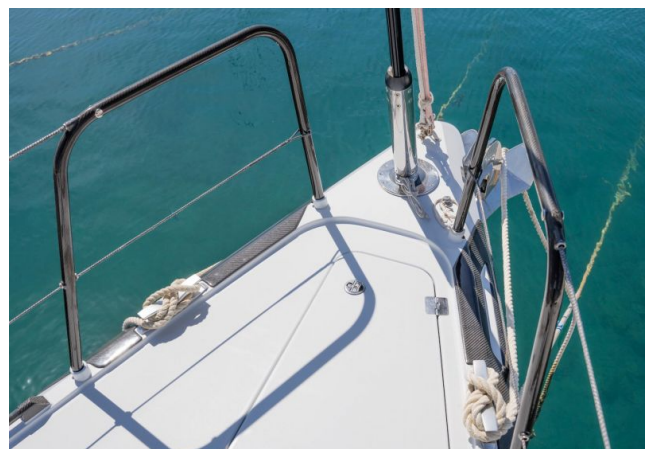
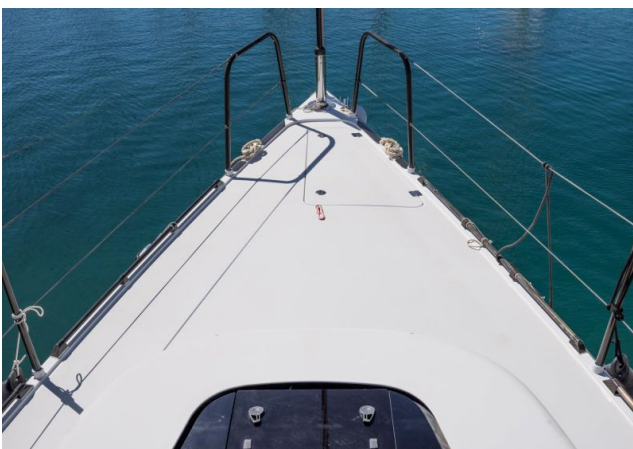
Accessories

- Cockpit cushions
- Folding carbon fibre gangway 2,15 m
- Full cover
- Covers for steering wheels
- Spare part kit
- Fenders
- Mooring lines

Brokerage Liability Disclaimer

All information especially regarding the VAT-status of a yacht has been supplied by third parties. It is non-binding and without guarantee, subject to error and alteration. Our brokerage relies exclusively on information supplied by the vendor carefully compiled and checked by us to the best of our knowledge. Hence, a liability for correctness and completeness of provided information cannot be assumed.

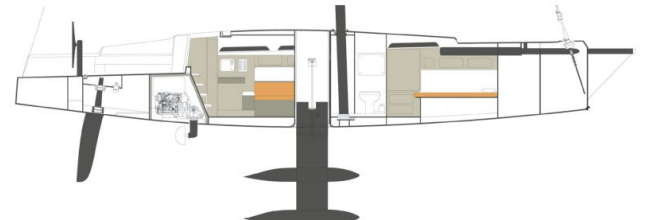
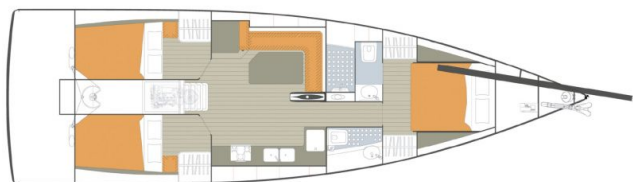
IMAGES



IMAGES



IMAGES



IMAGES



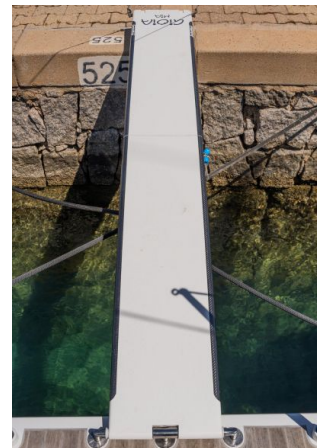
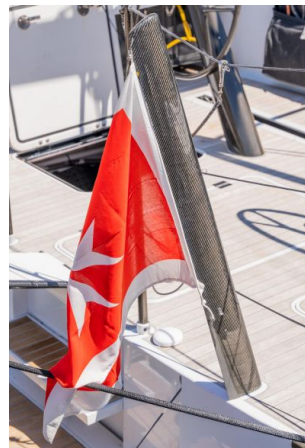
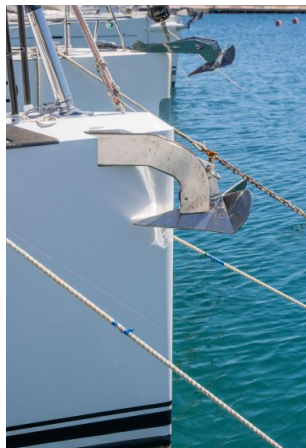
IMAGES



IMAGES



IMAGES



IMAGES

