



WAUQUIEZ PILOT SALOON 47

Year 2007



DIAMOND

DIAMOND Yachts, Yachtzentrum Baltic Bay
Börn 17 | 24235 Laboe

WAUQUIEZ PILOT SALOON 47



Main Info

Model	Wauquiez Pilot Saloon 47
Manufacturer	Wauquiez International SAS
Designer	Berret/Racoupeau
Category	Decksaloon yacht
Year	2007
Location	Zypern
Flag	Norway
VAT status	excl. VAT
Material	GRP
Rig	Sloop with furling mast
Cabins	3
Berths	6

Dimensions & Material

LOA	14.36 m
LWL	12.75 m
Beam	4.61 m
Draft	1.80 m
Displacement	14 t
Sail area	112 m ²
Engine	YANMAR 4JH3-HTE
Power	100 PS/74 KW
Drive	Shaft with folding propeller
Fresh water	595 L
Fuel	600 L
Holding tank	85 L

Key Facts

- Pilot Saloon 47 with furling mast.
- Pullmann berths in lateral cabin.
- Engine upgrade YANMAR 100 hp.
- Shallow draft version.
- Airconditioning and diesel heating system.
- Spacious, bright decksaloon.
- Electric winches.
- Watermaker.

Description

Luxurious and seaworthy decksaloon-cruiser built by the French quality yard Wauquiez International SAS. Architect: Berret/Racoupeau Yacht design. Wide and spacious cockpit with two helm stations, Targa arch for mainsheet and free access aft to the wide folding swim platform. The Pilot Saloon 47 has a bright, cosy decksaloon with elevated saloon floor (360° panorama from the dinette) and saloon upholstery in Alcantara. 3 cabin layout with spacious owner's cabin aft over the entire beam of the yacht with large, island double berth and owner's heads compartment with separate shower. Forward guest cabin with double berth, starboard lateral cabin with Pullman beds and second heads compartment with separate shower. The Pilot Saloon 47 offers plenty of storage space in lockers, shelves, drawers and below the berths. Well finished interior in hand-polished Burma-teak with many beautiful details and lots of solid wood in frames, strips and profiles. This Pilot Saloon 47 is offered by the first owner and sails under Norwegian flag (asking price excl. VAT). Extensive specification incl. furling mast, electric winches, engine upgrade, washing machine and combined air conditioning and diesel heating system by WEBASTO. Thanks to the increased diesel tank capacity, an ONAN 7 kVA diesel generator, the 100 l/h watermaker and the extensive battery bank, the yacht is self-sufficient over long distances. Shallow keel version with a draught of approx. 1.80 m. The Pilot Saloon 47 is on the market ...

Rig/Sails

- Deck-stepped 9/10 fractional SPARCRAFT furling mast
- Two sets of aft-swept spreaders
- Genoa furling system FACNOR
- Fixed second forestay with headsail furling system FACNOR
- 2 x insulated backstay
- Furling mainsail INCIDENCES Hydranet radial approx. 60 m²
- Furling genoa INCIDENCES Hydranet radial approx. 53 m² with UV-protection
- Cutter jib INCIDENCES Hydranet radial approx. 30 m² with UV-protection
- Gennaker UK-Sailmakers 1.5 oz Matrix approx. 147 m² in snuffer
- Gennaker halyard and deck gear

Deck

- Teak deck on running decks, swim platform and in cockpit
- Two electric primary winches HARKEN 53.2STCEH
- Electric halyard winch HARKEN 46.2STCEH to starboard
- Electric anchor windlass with remote control in cockpit
- Mooring gear: 42 kg stainless steel bow anchor and 80 m stainless steel anchor chain 10 mm
- Large sail locker below foredeck
- Large, folding teak cockpit table with storage compartment and space for chart plotter
- Cockpit lighting, external speakers and bimini are mounted in the Targa-arch
- Sprayhood
- Bimini with link cloth to sprayhood
- Railing gates to starboard and port
- Stainless steel davits
- Two teak seats in pushpit
- Wide, folding swim platform
- Swim ladder
- Cockpit shower hot/cold
- LED cockpit lights in Targa-arch
- Storage compartment for life raft in cockpit floor
- Deck lockers below helmsman's seats aft in cockpit

Layout/Interior

- Bright and friendly deck saloon with large front and side windows
- U-shaped dinette around folding saloon table to starboard
- Saloon upholstery in ALCANTARA (colour: "Amber Glow")
- Galley in passageway to aft cabin to port
 - Worktop in white CORIAN
 - Gas stove (three burners and oven)
 - Remote switch for gas valve
 - Refrigerator
 - Refrigerator/freezer
 - Double sink
 - Sea/fresh water foot pump
- Spacious owner's cabin with double island berth, dressing table, seat and ample storage in lockers and compartments
- En-suite owner's heads with separate shower to starboard
- Forward cabin with V-shaped double berth
- Lateral cabin with double bunk beds to starboard
- Guest heads to port with separate shower
- Exclusive and well finished interior in hand polished teak with floorboards in dark wenge
- OCEANAIR blinds and mosquito screens in deck hatches
- Blinds for deck saloon windows and hull windows
- LED interior lighting
- Electric fans in cabins
- Lee cloth below berths

Technical Equipment

- YANMAR 4JH3-HTE 4 cylinder turbo diesel 100 hp/74 KW
- Engine hours (as of November 2021): 1.952 h
- Seawater lubricated shaft drive with 3 blade folding propeller GORI (with overdrive)
- Enlarged diesel tank capacity 600 l
- Combined air conditioning WEBASTO Blue Cool and diesel heating WEBASTO Thermo 90ST (hot water system)
- 230 V shore power connection with charging cable
- 230 V sockets in interior
- Hot water boiler 42 l
- Fresh water shore connection
- Holding tank 85 l with Y-valve, deck connection and sea discharge
- Battery charger MASTERVOLT 12 V/50 A
- 6 x gel service battery 12 V/200 Ah
- AGM starter battery 12 V/105 Ah for engine
- AGM starter battery 12 V/105 Ah for generator
- MASTERVOLT Battery Monitor BTM III
- Diesel generator ONAN 7 kVA
- Inverter 12 V/230 V
- Washing machine 230 V
- Watermaker Dessalator 12 V/230 V 100 l/h

Navigation/Electronics

- Instruments in cockpit:
 - 2 x RAYMARINE ST60 Graphics
 - 2 x ST60 Wind
 - GPS/Chartplotter RAYMARINE E80 at cockpit table
- Instruments at chart table:
 - RAYMARINE ST60 Tridata (log and depth sounder)
 - GPS/chartplotter RAYMARINE E120
- Autopilot RAYMARINE ST6001+ with gyro sensor
- Wireless remote control RAYMARINE Smartcontrol
- VHF radio NAVMAN VHF7100
- Radar antenna RAYMARINE 2 KW at mast
- 2 x steering compass
- Radio/CD-player JVC with two speakers in saloon and 2 cockpit speakers
- TV flat screen LG in saloon at main bulkhead
- Clock, barometer, thermometer/hygrometer

Safety

- Life raft ARIMAR 6 pers. in container (needs service)
- JONBUOY rescue module on pushpit
- Lifesling
- Fire extinguishers
- Safety equipment
- Manual and electric bilge pump

Accessories

- Dinghy TALAMEX Highline
- Outboard engine YAMAHA 5 hp
- Stern anchor gear: COBRA-anchor 20 kg with 10 m stainless steel chain leader
- Transparent sunshade for deck saloon windows
- Folding aluminium gangway
- Fenders
- Mooring lines
- Canvas covers for steering wheels and cockpit table
- Pots and pans

Brokerage Liability Disclaimer

All information especially regarding the VAT-status of a yacht has been supplied by third parties. It is non-binding and without guarantee, subject to error and alteration. Our brokerage relies exclusively on information supplied by the vendor carefully compiled and checked by us to the best of our knowledge. Hence, a liability for correctness and completeness of provided information cannot be assumed.

IMAGES



IMAGES



IMAGES



IMAGES



IMAGES



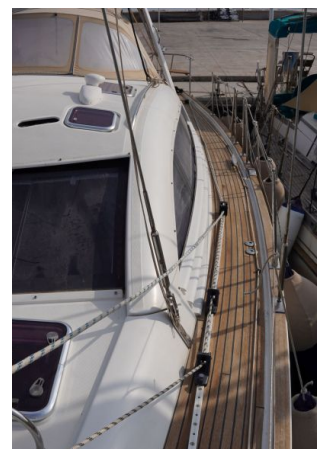
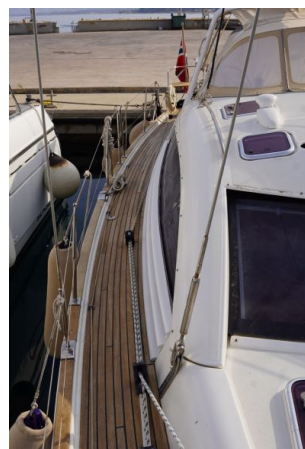
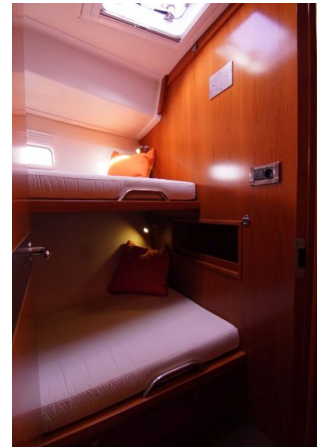
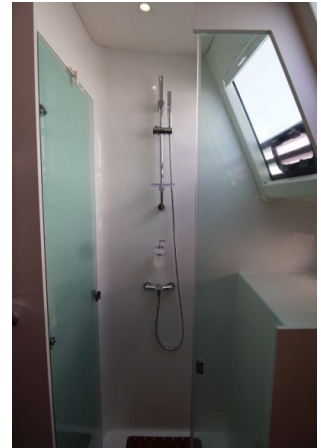
IMAGES



IMAGES



IMAGES



IMAGES

