



NIMBUS 305 COUPÉ

Year 2017



DIAMOND Yachts, Yachtzentrum Baltic Bay
Börn 17 | 24235 Laboe

NIMBUS 305 COUPÉ



NEW PRICE

198.000,00 €

EU-VAT paid

Main Info

Model	Nimbus 305 Coupé
Manufacturer	Nimbus Boats AB (SWE)
Designer	Joacim Gustavsson
Category	Coupé cruiser
Year	2017
Location	Kieler Förde
Flag	de
VAT status	EU-VAT paid
Material	GRP
Cabins	2
Berths	4

Dimensions & Material

LOA	10.07 m
LWL	8.18 m
Beam	3.25 m
Draft	0.90 m
Displacement	4.5 t
Engine	VOLVO PENTA D3-150
Power	150 PS/110 KW
Drive	Shaft drive
Fresh water	150 L
Fuel	250 L
Holding tank	80 L

Key Facts

- Side exit at inner helm station.
- Bow and stern windlass.
- Bow and stern thrusters.
- Shaft drive.
- Modern, yacht-like design with classic lines.
- Sturdy Scandinavian quality.
- "Nimbus Sidewalk" concept.
- Bright, friendly deckhouse.

Description

Well-built, seaworthy cruiser from the renowned Swedish shipyard Nimbus Boats. Despite her manageable size — ideal for handling by a small crew — the Nimbus 305 Coupé offers a surprising amount of deck space, onboard comfort, and living area with a bright, modern interior. Her Swedish designers have created a highly functional and versatile boat with great attention to detail. The innovative "Nimbus Sidewalk" concept features an asymmetrical deck layout with an extra-wide starboard running deck, allowing for safe and easy movement from the cockpit to the foredeck. A fully integrated side boarding door next to the helm station gives the skipper direct access to the deck—an invaluable feature when maneuvering. Equipped with a shaft drive, the Nimbus 305 Coupé tracks exceptionally well at low speeds, making her perfectly suited for both coastal cruising and inland waterways. The deckhouse is flooded with natural light, offering 360° panoramic views and excellent ventilation thanks to the large sliding roof hatches in the saloon. This particular vessel is a young, privately owned yacht in excellent condition, boasting a comprehensive equipment list that leaves little to be desired. Onboard you'll find bow and stern thrusters, electric windlasses at both bow and stern (each with stainless steel anchor), diesel heating, teak running decks, swim platform and cockpit, a cockpit cover, a large 16" SIMRAD chartplotter, autopilot, radar, AIS, and much more. Powered by an economical and ...

Deck

- Teak deck on starboard running deck, swim platform and cockpit
- Electric anchor windlass below decks
- Mooring gear: 10 kg stainless steel Bruce-anchor with 30 m stainless steel anchor chain 8 mm
- Electric stern anchor windlass
- Stern mooring gear: 10 kg stainless steel DELTA-anchor with anchor line
- Stainless steel antenna mast on saloon roof
- Cockpit cover (new in 2025)
- L-shaped cockpit bench with cushions
- Port-side cockpit locker below bench
- Folding cockpit table
- Starboard cockpit floor locker
- Stern shower hot/cold
- Fender racks on aft railing
- Bow boarding ladder

Technical Equipment

- VOLVO PENTA D3-150 5 cylinder common rail inboard diesel 150 hp/110 KW
- Engine hours (as of April 2025): 1.011 h
- EVC-system with electronic throttle and gear control
- Shaft drive with 4-blade propeller
- Hydraulic trim tabs
- Sidepower bow thruster
- Sidepower stern thruster
- Wireless remote control for bow and stern thrusters
- 230 V shore power connection with charging cable
- 12 V battery charger
- 12 V starter battery
- 12 V service battery
- EBERSPÄCHER D4 diesel heater
- Defroster for windscreen
- Electric toilet
- Holding tank approx. 80 l with deck connection and sea discharge via electric pump
- LED interior lighting
- LED navigation lights

Layout/Interior

- Bright, welcoming deck saloon with nearly unobstructed 360° panoramic view thanks to bonded front and side windows with slim pillars
- Saloon table with two sofas to port
- Forward sofa convertible into a co-pilot bench seat
- Helm station with driver's seat forward to starboard
- Longitudinal galley aft to starboard
 - Worktop in black Corian
 - Gas stove with ceramic cooktop
 - Double sink
 - Refrigerator
 - Additional fridge drawer
- Forward cabin with angled double berth, wardrobe, deck hatch, and two hull windows
- Portside guest cabin with double berth, wardrobe, seat, and hull window
- Starboard heads compartment with sink, separate shower, and electric toilet
- Carpet on walking surfaces (new in 2025)
- Pleated blinds for hull windows and roller blind/mosquito screen in deck hatch

Navigation/Electronics

- 16" GPS/chart plotter SIMRAD NSS
- Autopilot SIMRAD
- Radar antenna SIMRAD
- AIS-transponder
- Compass
- VHF-radio
- VOLVO PENTA Trip Computer
- Rear-view camera
- TV antenna with connection in forward cabin and in saloon
- FUSION marine entertainment system with two speakers in saloon

Safety

- Life raft
- Lifesling
- Fire extinguisher
- Remote-controlled searchlight
- Electric signal horn
- Electric and manual bilge pump

Accessories

- Sunbed cushions on foredeck (new in 2025)
- Fenders
- Mooring lines

Brokerage Liability Disclaimer

All information especially regarding the VAT-status of a yacht has been supplied by third parties. It is non-binding and without guarantee, subject to error and alteration. Our brokerage relies exclusively on information supplied by the vendor carefully compiled and checked by us to the best of our knowledge. Hence, a liability for correctness and completeness of provided information cannot be assumed.

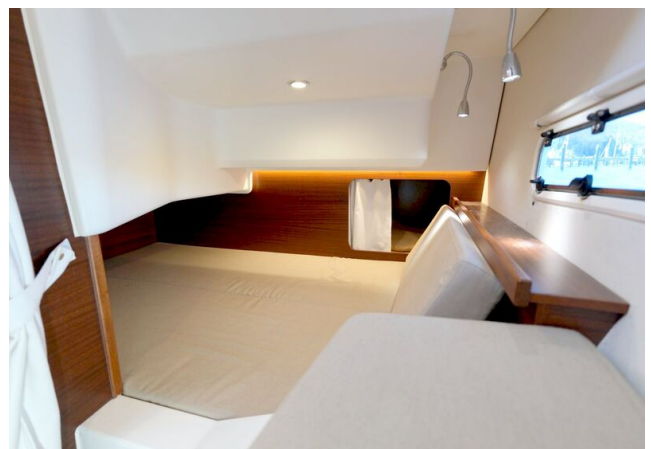
IMAGES



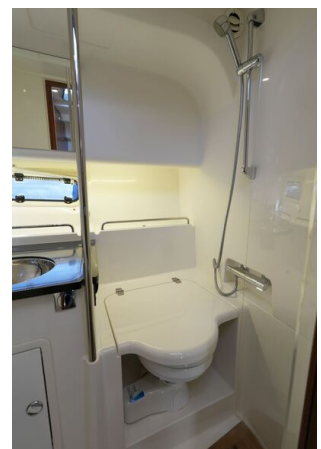
IMAGES



IMAGES



IMAGES



IMAGES

