



NAJAD 511

Year 2006



DIAMOND Yachts, Yachtzentrum Baltic Bay
Börn 17 | 24235 Laboe

NAJAD 511



Boat sold.

Main Info

Model	NAJAD 511
Manufacturer	Najadvarvet AB (SWE)
Designer	judel/vrolijk & co.
Category	Centercockpit-cruiser
Year	2006
Location	Lübecker Bucht
Flag	Malta
VAT status	EU-VAT paid
Material	GRP
Rig	Sloop with cutter stay
Cabins	3
Berths	6

Dimensions & Material

LOA	15.50 m
LWL	13.40 m
Beam	4.50 m
Draft	2.40 m
Displacement	19 t
Sail area	129 m ²
Engine	VOLVO PENTA D3-110
Power	110 PS/81 KW
Drive	Shaft with folding propeller
Fresh water	600 L
Fuel	900 L
Holding tank	120 L

Key Facts

- Diesel generator 10 kVA and inverter.
- Electric winches and bow thruster.
- El. furling mast and el. genoa furler.
- Cutter stay with furling system.
- Equipped for circumnavigation.
- Extensive FURUNO navigation.
- Three cabins, two heads.
- Lithium service batteries.

Description

Luxurious, seaworthy and fast center cockpit yacht built by the Swedish yard Najadvarvet AB on the boatbuilder's island of Orust. The NAJAD 511 combines traditional, high-quality craftsmanship with modern yacht design by German architect judel/vrolijk [&] co. Perfectly suited for long distance sailing in all conditions, the NAJAD 511 can easily and safely be handled by a small crew. The fixed windscreen and the deep centre cockpit with high, comfortable coamings provide good protection in uncomfortable conditions and all sheets and halyards are lead back to the helm station. Beautiful lines with low freeboard, sleek coachhouse and elegant stern. The NAJAD 511 still has the classic underwater hull shape with a deep bilge, skeg in front of the rudder blade and shaft drive. Solid and beautifully finished mahogany interior in best Scandinavian boatbuilding tradition. Fully equipped owner's yacht. Indoor winter storage and continuous care and technical maintenance by a skipper and professional companies. Complete equipment for long distance cruising incl. electric SELDEN furling mast, electric genoa furling system, bow thruster, diesel generator, watermaker, air conditioning, satellite communication etc. Numerous investments in recent years such as VOLVO PENTA D3-110 inboard diesel (new 2011), FURUNO chart plotters and instruments (new 2017), drives for the electric furling systems new 2018/2019, lithium service batteries (new 2017), running rigging (new 2019), canvases (new 2018) ...

Rig/Sails

- Keel stepped, top rigged SELDEN electric furling mast (new electric drive 2018)
- Three sets of aft-swept spreaders
- Electric genoa furler BAMAR (new electric drive 2019)
- Cutter stay with FURLEX furler
- Removable running backstays
- Spinnaker pole
- Insulated backstay
- SELDEN halyard tensioners on mast
- ANDERSEN stainless steel rigging screws
- Preventer
- Central NAVTEC hydraulic panel for backstay adjuster and boom vang
- LED 3-colour-light and anchor light in mast top
- Cockpit lighting in boom
- Deck lights in the lower spreaders
- Furling mainsail UK-Sailmakers Hydranet approx. 70 m² with vertical battens
- Furling genoa UK-Sailmakers Hydranet approx. 79 m² with UV-protection
- Furling jib for cutter stay UK-Sailmakers Hydranet approx. 45 m² with UV-protection
- Storm jib Dacron in orange
- Trysail with preparation (track on mast and additional halyard)
- Spinnaker deck gear (halyards, sheets, padeyes and blocks)
- The complete running rigging was changed in 2018

Deck

- Teak deck on running decks, coachhouse roof, aft deck, swim platform and in cockpit
- Electric genoa winches ANDERSEN 68.2STE
- Electric main sheet winches ANDERSEN 46.2STE
- Electric halyard winches ANDERSEN 46.2STE
- Electric anchor windlass LOFRANS 1.500 W below decks with remote control and chain counter in cockpit
- Mooring gear: ROCNA anchor 55 kg and 100 m high tension chain
- Seawater deck wash pump in anchor locker
- Folding stainless steel antenna mast at stern with integrated outboard crane
- Retractable BESENZONI davits
- Fixed windscreen with stainless steel frame (central opening window) and handrails on the outside
- Sprayhood (new 2018) with extra grabrail
- Cockpit cover (new 2018)
- Bimini
- Highgloss varnished chart tables and companionway
- Gates in lifelines on starboard and port
- Integrated teak seats in pushpit
- Folding teak cockpit table
- Stern shower hot/cold
- Swedish bowsprit in teak and stainless steel
- Bow ladder
- Stainless steel bow protection rail
- Stainless steel spring cleats
- Stainless steel chafing protection rails on all cleats
- Outboard bracket on pushpit

Layout/interior

- NAJAD 511 in 3-cabin-layout with exclusive, beautifully finished mahogany interior
- Saloon with dinette on port side and two single settees to starboard (saloon upholstery in blue Alcantara)
- Forward facing chart table to port aft and large lockers and storage compartment for sea charts in passage to aft cabin
- L-shaped galley to starboard
 - CORIAN worktop
 - Double sink
 - Additional electric seawater pump
 - Large electric coolbox 92 l
 - Freezer 40 l
 - Microwave 230 V
 - Electric stove FORCE10 (induction hob with 3 flames and oven)
- Spacious, luxurious owner's cabin aft over the entire beam of the yacht with island double berth, desk, armchair and ample storage space in lockers, drawers and shelves
- Owner's heads with separate shower and electric toilet
- Forward cabin with V-shaped double berth
- Guest heads compartment to starboard with separate shower and electric toilet
- OCEANAIR blinds and mosquito screens for deck hatches
- Red night lighting in interior
- Lee cloth for all berths
- Swedish mattress toppers for all berths
- Prebit LED interior lighting throughout the yacht (new 2017)
- Interior lighting for lockers

Technical Equipment

- VOLVO PENTA D3-110 5-cylinder inboard diesel 110 hp/81 KW (new in 2011)
- Shaft drive with AQUADRIVE (flexible shaft coupling) and line cutter on propeller shaft
- 4-blade VOLVO PENTA folding propeller
- RACOR diesel filter
- REVERSO central oil change system for engine, transmission and diesel generator
- Second alternator
- Additional aluminium paneling in engine compartment
- Bow thruster SLEIPNER SP155 with remote control
- 230 V shore power with isolation transformer
- Battery charger MASTERVOLT 24 V/100 A
- MASTERVOLT MassCombi charger and inverter 24 V/230 V/4.000 W/120 A
- Diesel generator MASTERVOLT Whisper 10 kVA
- Two lithium service batteries 24 V/180 Ah (new 2017)
- Starter battery MASTERVOLT AGM 12 V/80 Ah with separate battery charger (new 2017)
- 2 x diesel heaters EBERSPÄCHER (new burners in 2018) with outlets in all rooms and additional outlet in cockpit
- Air conditioning for aft cabin
- Watermaker Safari Escape Modular 24 V
- Electric fans in all cabins
- Washing machine
- 2 x electric toilets with stainless steel holding tanks
- Lightning protection (shrouds and stays connected to keel bolts)
- Safe

Navigation/Electronics

- Instruments: 3 x FURUNO FI-70 display above companionway (new in 2017) with remote control at helm and transducer for log, echo sounder and wind
- Autopilot RAYMARINE ST6001+ incl. gyro sensor and LEWMAR Mambadrive
- Radio remote control RAYMARINE Smartcontrol
- GPS/chartplotter FURUNO NavNet TZtouch 15" (new in 2017) behind windscreen
- GPS/chartplotter FURUNO NavNet TZtouch 11" (new in 2017) at helm station
- Additional GPS-receiver FURUNO GP32
- AIS-transponder FURUNO
- Radar-antenna FURUNO DRS4D-NXT 4 KW on mast (new in 2017)
- Forward facing echo sounder SONAR Probe
- Fishfinder FURUNO
- Additional FURUNO FI-70 display in aft cabin
- Compass
- VHF radio RAYMARINE Ray240E with two stations
- R[&]R combi antenna "Pacific" (FM/AM/TV/VHF/SSB)
- SSB ICOM 802
- Satellite telephone/internet antenna Fleet500 Broadband on antenna mast (currently not mounted)
- Weather fax FURUNO Fax30
- Navtex FURUNO NX300
- Marine-PC with display installed at chart table with MaxSea Software (new 2018)
- FUSION MS-AV750 Marine Entertainment System (radio/CD/DVD-player/Bluetooth/USB/iPhone/iPod) and INFINITY sound system with subwoofer, 4 speakers in saloon and 2 cockpit speakers
- TV SAMSUNG 32" in saloon on bulkhead (new 2016)
- TV 15" with electric lift in saloon to starboard
- Radio/stereo in owner's cabin
- Ship clock, barometer

Safety

- Lifteraft AUTOFLUG Modula 6 persons in quick launch bracket at pushpit
- EPIRB
- Active radar reflector SeaMe
- Passive radar reflector
- Safety lines on deck and in cockpit
- 4 fire extinguishers
- Fire alarm and automatic extinguishing system in engine compartment
- Alarm system
- Signal horn AQUASIGNAL on mast
- Lifebuoy SECUMAR
- DANBUOY
- Remote controlled searchlight on antenna mast
- Manual bilge pump and 2 x electric bilge pumps

Accessories

- Stainless steel BRUCE stern anchor 15 kg
- Gangway 2,50 m
- Original NAJAD crockery
- Fenders
- Mooring lines

Brokerage Liability Disclaimer

All information especially regarding the VAT-status of a yacht has been supplied by third parties. It is non-binding and without guarantee, subject to error and alteration. Our brokerage relies exclusively on information supplied by the vendor carefully compiled and checked by us to the best of our knowledge. Hence, a liability for correctness and completeness of provided information cannot be assumed.

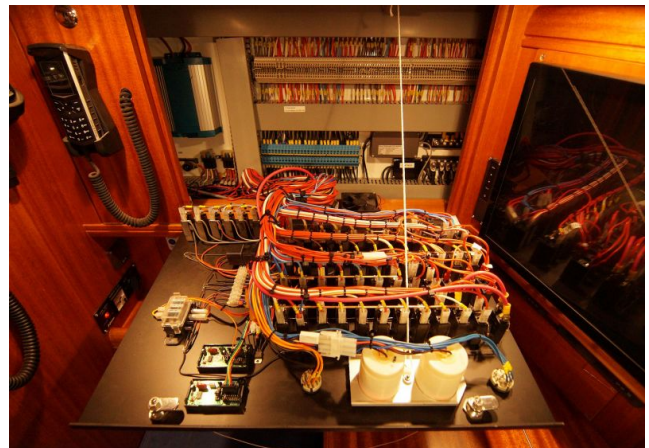
IMAGES



IMAGES



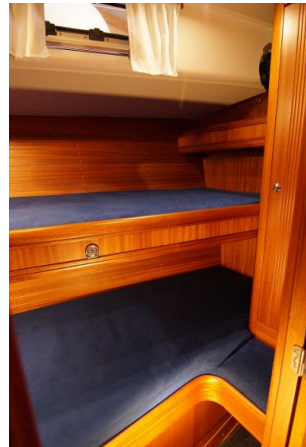
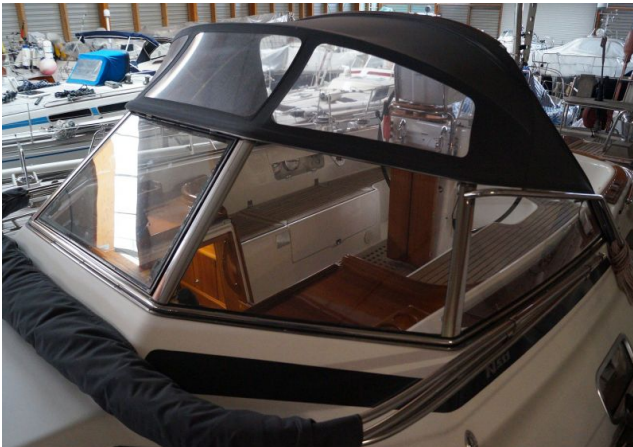
IMAGES



IMAGES



IMAGES



IMAGES

