



NAJAD 391

Year 1995



DIAMOND Yachts, Yachtzentrum Baltic Bay
Börn 17 | 24235 Laboe

NAJAD 391


215.000,00 €

EU-VAT paid

Main Info

| | |
|---------------------|-------------------------|
| Model | NAJAD 391 |
| Manufacturer | Najadvarvet AB (SWE) |
| Designer | Erik Segerlind |
| Category | Centercockpit cruiser |
| Year | 1995 |
| Location | Deutschland/Ostsee |
| Flag | Germany |
| VAT status | EU-VAT paid |
| Material | GRP |
| Rig | Sloop with furling mast |
| Cabins | 2 |
| Berths | 6 |

Dimensions & Material

| | |
|---------------------|--------------------|
| LOA | 12.10 m |
| LWL | 10.10 m |
| Beam | 3.63 m |
| Draft | 1.90 m |
| Displacement | 10 t |
| Sail area | 76 m ² |
| Engine | NANNI 5.280 HE |
| Power | 62 PS/46 KW |
| Drive | Shaft with MAXPROP |
| Fresh water | 220 L |
| Fuel | 220 L |
| Holding tank | 100 L |

Key Facts

- Protected centercockpit with windscreen.
- Very solid and seaworthy sailing yacht.
- Removable cutter stay.
- Elegant flushdeck.
- Beautiful, traditional mahogany interior.
- Strong engine NANNI 5.280 HE.
- Spacious owner's cabin aft.
- Bowthruster.

Description

Exclusive, sturdy centercockpit-cruiser built by Najadvarvet AB on the traditional boatbuilder's island of Orust in the western archipelago. The NAJAD 391 has a special, elegant line due to her flushdeck. She is a well-known classic of the Swedish yard and was a topseller at her time. Despite the low, barely visible coachhouse, the NAJAD 391 offers a surprising amount of room and standing height in the saloon. Beautiful, solid and well finished mahogany interior in best Scandinavian boatbuilding tradition. Spacious owner's cabin aft over the entire beam of the yacht. The NAJAD 391 is a very safe and seaworthy sailing yacht and can handle a lot of wind and waves. She has a high ballast ratio of more than 40 % and a conventional bottom with deep laminated bilge, skeg in front of the rudder blade and shaft drive. The yacht has a protected centercockpit with fixed windscreen and a high, comfortable coaming. This NAJAD 391 is offered by her first owner and was exclusively sailed on the Baltic Sea. Complete equipment including bow thruster, electric genoa winches, removable cutter stay and extensive navigation electronics. Interior Layout with two separate berths in the aft cabin and an additional shower in the foredeck to port. The yacht has spent every winter in an inside winter storage. She has been continuously maintained and technically serviced by experts.

Rig/Sails

- Top-rigged SELDEN furling mast on deck with two pairs of spreaders
- FURLEX genoa furling system
- Removable cutter stay with quick release, halyard, sheets
- Hydraulic backstay tensioner NAVTEC
- Shroud tensioner protection in stainless steel
- Two LEWMAR 40.2STC halyard winches on mast
- 3-color lantern and anchor light in top
- Deck spotlight
- Cockpit lighting in boom
- Carbon fiber spinnaker pole (stowed on the mast)
- Furling mainsail DOYLE-Sails approx. 36 m² (new 2021)
- Furling genoa DOYLE-Sails approx. 49 m² (new 2021)
- Gennaker approx. 100 m² in recovery tube
- Gennaker/spinnaker gear

Deck

- Teak deck on side decks, coachhouse roof, bathing platform and in cockpit
- Electric anchor winch LOFRANS Cobra below deck
- Anchor gear: Stainless steel BRUCE anchor 20 kg and 40 m stainless steel anchor chain 8 mm
- Stainless steel mooring cleats fore and aft and stainless steel spring cleats amidships
- Stainless steel stern guard rail
- Stern shower hot/cold
- High-gloss varnished chart tables on companionway
- Electric stainless steel genoa winches LEWMAR 58.2STEC
- Electric mainsheet winch LEWMAR 44.2STEC on port side
- Fixed windshield with opening center window and outside handrails
- Sprayhood
- Full cockpit cover
- Folding cockpit table with extension
- Outboard motor bracket on pushpit
- Swim ladder with teak steps
- Bow ladder
- Integrated teak seats in pushpit with backrest
- Solid, laminated chafing protection rails with stainless steel profile on outside of freeboard

Layout/Interior

- Saloon with comfortable dinette around folding saloon table
- The saloon sofas can be converted into two additional berths
- Chart table with fold-out navigator's seat, instrument console, control panel and large chart compartment to starboard aft
- Longitudinal galley in passageway to aft cabin on port side
 - Gas stove (3 burners and oven)
 - Double sink
 - Large electric cool box
 - Ample storage space in lockers, compartments and drawers
- Spacious owner's cabin in stern across entire width of boat with split berths (layout A)
- Bow cabin with V-shaped double berth and lockers
- Wet room aft to starboard
- Separate shower in foredeck to port
- Innerspring mattresses in owner's cabin (new 2024)
- Carpet on the walkways throughout the ship
- Large, deep locker in cockpit to starboard
- Night lighting in the interior

Technical Equipment

- NANNI 5.280 HE 5 cylinder built-in diesel 62 HP/46 KW
- Operating hours (as of September 2024): 2.984 h
- Shaft drive with flexible coupling and 3-bladed feathering propeller MAXPROP
- Alternator 12 V/60 A
- Bow thruster 7 hp
- EBERSPÄCHER D5L diesel heater with outlets in saloon, both cabins and heads compartment
- 230 V shore connection with charging cable
- 230 V sockets in interior
- PHILIPPI 12 V/40 A battery charger
- 3 x service battery 12 V/95 Ah
- Starter battery 12 V/100 Ah
- Hot water boiler 40 l
- Holding tank with Y-valve, deck outlet and sea discharge (electric pump)
- Safe in aft cabin

Navigation/Electronics

- AUTOHELM instruments:
 - ST50 Log
 - ST50 Echo sounder
 - ST50 Wind
 - ST50 Wind magnifier
 - ST50 Multi on the chart table
- Autopilot AUTOHELM ST6000
- GPS/chart plotter SEIWA above companionway
- Compass
- VHF radio RAYMARINE Ray90 (new 2024)
- 2 x GPS receiver ap-Navigator DGPS9
- Fastnet GMDSS marine decoder FMD 20
- Blaupunkt radio/CD player with two loudspeakers in saloon and two cockpit loudspeakers
- R[&]R "Hawaii" combination antenna
- Clock and barometer

Safety

- Life raft 4 pers. in holder on pushpit
- DANBUOY
- Lifesling
- Rescue collar
- Stretch ropes on side decks
- Fire extinguisher
- Horn on mast
- Active radar reflector
- Manual and electric bilge pump

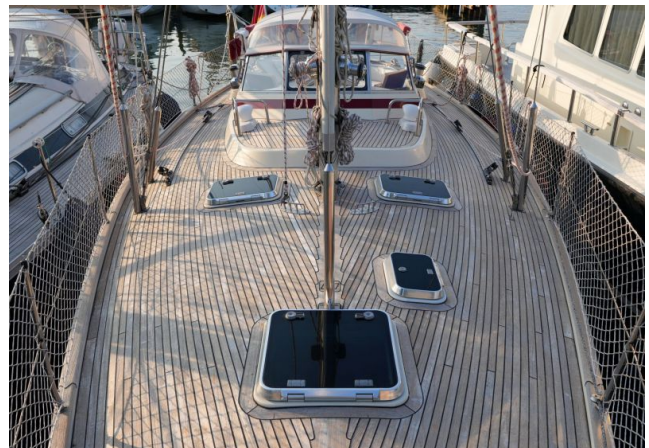
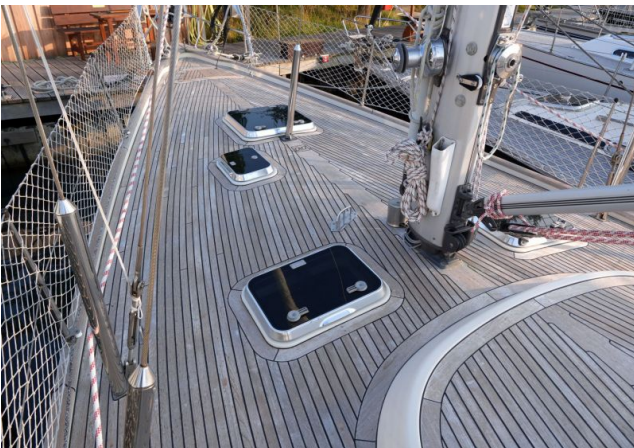
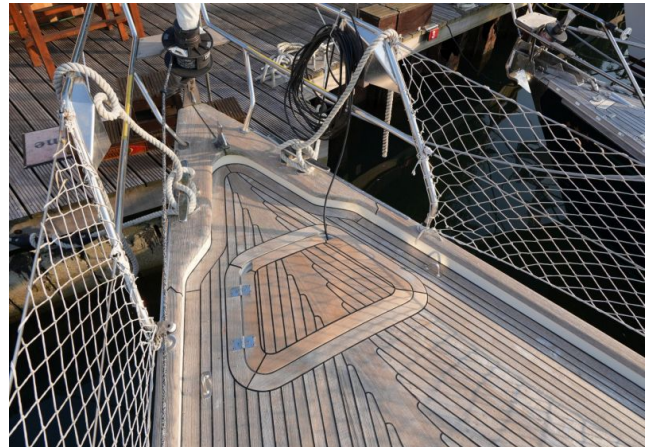
Accessories

- Harbour trailer (repainted with new tires)
- Sun awning
- Cockpit cushions
- Covers for winches
- Stern anchor
- Fenders
- Mooring lines

Brokerage Liability Disclaimer

All information especially regarding the VAT-status of a yacht has been supplied by third parties. It is non-binding and without guarantee, subject to error and alteration. Our brokerage relies exclusively on information supplied by the vendor carefully compiled and checked by us to the best of our knowledge. Hence, a liability for correctness and completeness of provided information cannot be assumed.

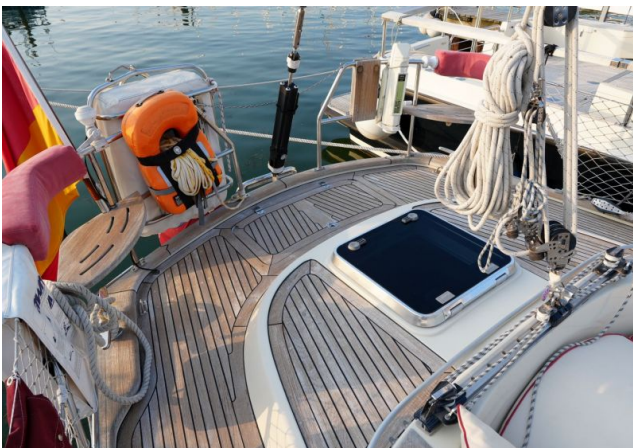
IMAGES



IMAGES



IMAGES



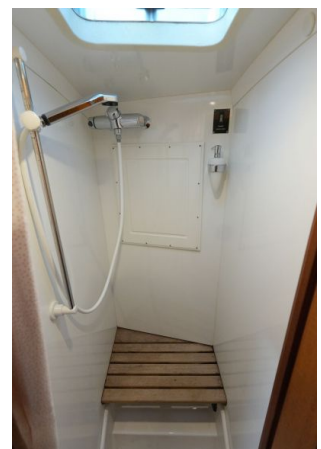
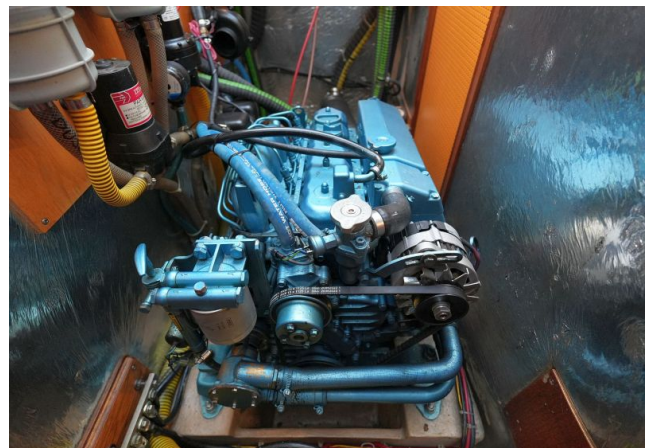
IMAGES



IMAGES



IMAGES



IMAGES

