



# NAJAD 380

Year 2006



DIAMOND Yachts, Yachtzentrum Baltic Bay  
Börn 17 | 24235 Laboe

# NAJAD 380



**Boat sold.**

## Main Info

<b>Model</b>	NAJAD 380
<b>Manufacturer</b>	Najadvarvet AB/Schweden
<b>Designer</b>	judel/vrolijk & co.
<b>Category</b>	Centercockpit cruiser
<b>Year</b>	2006
<b>Location</b>	Deutsche Ostseeküste
<b>Flag</b>	Germany
<b>VAT status</b>	EU-VAT paid
<b>Material</b>	GRP
<b>Rig</b>	Sloop with furling mast
<b>Cabins</b>	2
<b>Berths</b>	4

## Dimensions & Material

<b>LOA</b>	11.55 m
<b>LWL</b>	9.90 m
<b>Beam</b>	3.65 m
<b>Draft</b>	1.65 m
<b>Displacement</b>	10 t
<b>Sail area</b>	75 m <sup>2</sup>
<b>Engine</b>	YANMAR 4JH4E
<b>Power</b>	54 PS/40 KW
<b>Drive</b>	Shaft with MAXPROP
<b>Fresh water</b>	400 L
<b>Fuel</b>	325 L
<b>Holding tank</b>	55 L

## Key Facts

- NAJAD 380 with electric furling mast.
- Short keel (draft: approx. 1,65 m).
- Very seaworthy cruiser.
- Teakdeck all over.
- Deep, well protected centercockpit.
- Lots of storage space.
- Electric winches.
- Bowthruster.

## Description

Exclusive and sturdy centercockpit yacht built by the quality yard Najadvarvet on the boatbuilder's island of Orust in the western Swedish archipelago. The NAJAD 380 is an exceptionally safe and seaworthy cruising yacht for couples or families. Deep and well protected center cockpit with fixed windscreen and high coaming. Wide, unobstructed running decks with raised bulwark, allowing safe movement on deck at all times. Halyards, sheets and trim lines are led back to the cockpit so the yacht can be maneuvered by small crew or even single-handed. The NAJAD 380 has a moderately traditional underwater hull with short skeg in front of the rudder blade, shaft drive and a deep laminated bilge. Generous tank capacities (fresh water: 400 l, diesel: 325 l). Exclusive, very well finished mahogany interior in the best Swedish boatbuilder's tradition. Fully equipped private yacht in very good condition offered by her second owner. Especially the interior shows very few signs of use. Every year in indoor winter storage and continuous technical maintenance. NAJAD 380 in short keel version with a draft of approx. 1,65 m, teak deck all over and electric SELDEN furling mast. Interior layout-version B with settee in owner's cabin and longitudinal sofa in saloon to starboard. Extensive specification including bow thruster, electric ANDERSEN winches and YANMAR 54 hp inboard diesel with shaft drive and Maxprop feathering propeller. The NAJAD 380 is located in the Baltic Sea close to Fehmarn and ...

## Rigg/Sails

- Deck stepped, 9/10 fractional SELDEN furling mast
- Electric mainsail furling system
- Two sets of spreaders
- Genoa furling system FURLEX 300s
- Manual SELDEN backstay tensioner
- Carbon fibre spinnaker pole (stowed on mast)
- Aluminium tubes for rigging screws
- 3 colour light in masthead
- Furling mainsail UK/Syversen triradial DC Mylar approx. 37 m<sup>2</sup>
- Furling jib UK/Syversen triradial DC Mylar approx. 33 m<sup>2</sup>
- Gennaker UK/Syversen radial approx. 95 m<sup>2</sup> in snuffer (hardly used)
- Gennaker gear

## Deck

- Teak on running decks, coachhouse roof, swim platform and in cockpit
- Electric anchor windlass LOFRANS 1.000 W below decks with remote control in cockpit
- Mooring gear: Bruce-anchor 20 kg and 40 m anchor chain 8 mm
- High gloss varnished chart tables and companionway
- Electric genoa winches ANDERSEN 52.2STE
- Main sheet winches ANDERSEN 28.2ST
- Fixed windscreen with stainless steel handrails outside
- Sprayhood with stainless steel hoops
- Cockpit cover
- Folding teak cockpit table with canvas cover
- Two deck lockers below aft deck
- Large, deep cockpit locker to starboard
- JEFA steering pedestal with folding steering wheel
- Integrated teak seats in pushpit
- Railing gates to starboard and port
- Stern shower hot/cold
- Swim ladder
- Bow ladder
- Stainless steel rail as bow protection on stem
- Stainless steel chafing protection on all cleats
- Stainless steel profile as rubbing strake on teak gunwale
- Spring cleats

## Layout/Interior

- Saloon with two sofas at folding saloon table
- Forward facing chart table with navigator's seat to starboard aft
- Longitudinal galley to port in passage to owner's cabin
  - Large 92 l electric cool box
  - Double sink
  - Gas stove (2 burners with oven)
  - Electric remote switch for gas valve
  - Microwave 230 V
  - Ample storage space in lockers, compartments and drawers
- Large owner's cabin aft across the full beam of the yacht with double berth to starboard and settee to port
- Forward cabin with V-shaped double berth, lockers and storage compartments
- Heads compartment to starboard with CORIAN vanity top and electric toilet
- OCEANAIR blinds and mosquito screens in deck hatches
- Beautiful, very well finished mahogany interior
- Carpet in saloon, galley and cabins
- Pocketspring mattresses with additional Swedish topper
- Red night lights in interior

## Technical equipment

- YANMAR 4JH4E 4 cylinder inboard diesel 54 hp/40 KW
- Engine hours (as of June 2023): 594 h
- Shaft drive with 3-bladed feathering propeller MAXPROP
- Bow thruster
- Diesel heating EBERSPÄCHER (new 2022) with outlets in saloon, both cabins and heads compartment
- 230 V shore power connection with charging cable
- 230 V sockets in the interior
- Battery charger 12 V/50 A
- Three service batteries 12 V/125 Ah (new 2021)
- Starter battery 12 V/70 Ah (new 2021)
- Stainless steel holding tank approx. 55 l with Y-valve, deck connection and sea discharge

## Navigation/Electronics

- Instruments above companionway:
  - RAYMARINE ST290 graphic display
  - RAYMARINE ST290 analogue wind display
  - RAYMARINE ST290 compass display
- Second RAYMARINE ST290 graphic display at chart table
- Autopilot RAYMARINE ST6001+ with gyro-sensor
- Radio remote control for autopilot RAYMARINE S100
- GPS antenna RAYMARINE
- Chart plotter RAYMARINE E120 behind windscreen
- Radar antenna RAYMARINE 2 KW on mast
- RAYMARINE NMEA interface
- Navtex receiver FURUNO NX-300
- Compass
- R[&]R combi antenna "Antigua" for VHF/TV/FM
- Radio/CD/DVD player PIONEER with two speakers in saloon and two cockpit speakers

### Safety

- Life raft AVON Modula 4 pers. (in container) in quick launch bracket at pushpit
- Lifesling at pushpit
- Jack stays with padeyes on deck and in cockpit
- Radar reflector at mast
- Fire extinguisher
- Electric and manual bilge pump

### Accessories

- Cover for furling jib
- Mooring lines
- Fenders

#### Brokerage Liability Disclaimer

All information especially regarding the VAT-status of a yacht has been supplied by third parties. It is non-binding and without guarantee, subject to error and alteration. Our brokerage relies exclusively on information supplied by the vendor carefully compiled and checked by us to the best of our knowledge. Hence, a liability for correctness and completeness of provided information cannot be assumed.



## IMAGES





## IMAGES



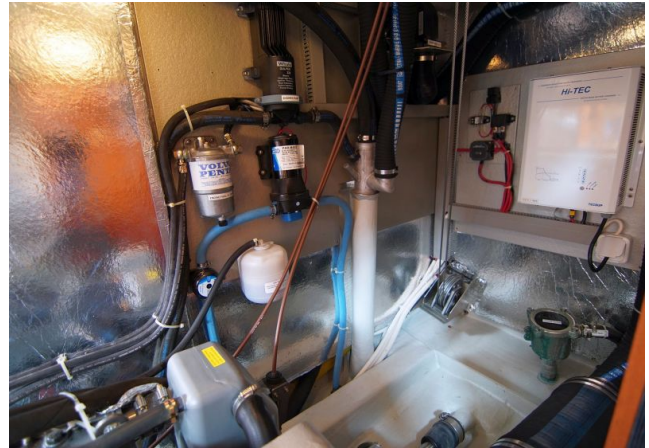


## IMAGES





## IMAGES



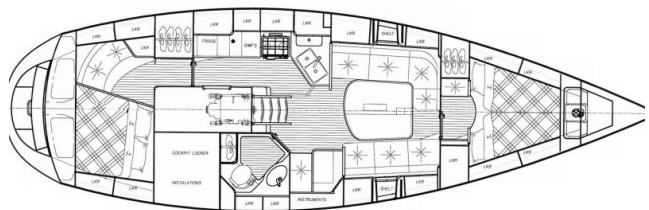


## IMAGES





## IMAGES



## IMAGES

