



NAJAD 361

Year 1998



DIAMOND Yachts, Yachtzentrum Baltic Bay
Börn 17 | 24235 Laboe

NAJAD 361



Boat sold.

Main Info

Model	NAJAD 361
Manufacturer	Najadvarvet AB (SWE)
Designer	Najadvarvet AB
Category	Centercockpit cruiser
Year	1998
Location	Kieler Förde
Flag	Germany
VAT status	EU-VAT paid
Material	GRP
Rig	Sloop with furling mast
Cabins	2
Berths	4

Dimensions & Material

LOA	11.20 m
LWL	9.25 m
Beam	3.50 m
Draft	1.83 m
Displacement	8 t
Sail area	65 m ²
Engine	VOLVO PENTA MD22L
Power	48 PS/36 KW
Drive	Welle mit Drehflügelpropeller
Fresh water	280 L
Fuel	200 L
Holding tank	110 L

Key Facts

- Center cockpit with fixed windscreen.
- Easy handling by small crew.
- Very comprehensive specification.
- NAJAD 361 with furling mast.
- Beautiful, exclusive mahogany interior.
- Spacious, luxurious owner's cabin aft.
- Very safe and seaworthy cruiser.
- Bowthruster.

Description

Well-kept, fully equipped centercockpit-cruiser built by Najadvarvet AB. Exclusive, traditional quality from the boatbuilder's island of Orust in the Western Swedish archipelago. The NAJAD 361 is an easy to handle family cruiser with spacious aft cabin. Deep and well protected centercockpit with high coaming and fixed windscreen. All sheets, halyards and controls are led back to the winches close to the helmstation (no coachhouse winches). Thus the yacht can be sailed one-handed or by a small crew. The NAJAD 361 is a very stiff, seaworthy yacht and can take a lot of wind (lead keel with a ballast of approx. 3.200 kg, ballast ratio: approx. 40 %). This NAJAD 361 is very well equipped incl. furling mast, bowthruster, Aquadrive and feathering propeller, complete navigation electronics and lots of inventory. She is available for immediate delivery. Every year in indoor winter storage and continuous technical maintenance and care. The bottom paint incl. epoxy primer has totally been rebuilt in 2008.

Rig/Sails

- Deck stepped, top rigged SELDEN furling mast
- Two sets of spreaders
- FURLEX genoa furler
- Furling mast and genoa furler are operated from the cockpit
- Manual backstay adjuster
- Aluminum tubes for rigging screws
- Spinnaker pole stowed on mast
- 3-color light and anchor light in mast top
- Furling mainsail approx. 31 m² SCHULZ-Segel (new 2010) with four vertical battens and UV-protection
- Furling genoa approx. 33 m² with UV-protection
- Furling genoa approx. 39 m² SCHULZ-Segel (new 2016)
- Stormjib approx. 12 m²
- Gennaker approx. 90 m² SCHULZ-Segel in snuffer (new 2010)
- Spinnaker deck gear

Deck

- Teak on running decks, coachhouse roof, swim platform and in cockpit
- Electric anchor windlass
- Mooring gear: BRUCE-anchor with 38 m anchor chain 8 mm
- Stern anchor with 3 m chain lead and 20 m warp
- High gloss varnished charttables and companionway
- Deep, spacious locker to starboard in cockpit
- Genoa winches ANDERSEN 46.2ST
- Spinnaker winches ANDERSEN 28.2ST
- Laminated rubbing strake on hull
- Fixed windsceen with stainless steel handrails
- Sprayhood
- Sprayhood extension
- Bow ladder
- Folding cockpit table
- Two integrated teak seats in pushpit
- Outboard engine bracket in pushpit

Layout/Interior

- Saloon with two longitudinal sofas
- Folding saloon table
- Forward facing chart table to starboard aft
- Large owner's cabin aft over the entire beam of the yacht with wide double berth to starboard and single berth to port
- Forward cabin with V-shaped double berth and two lockers
- Longitudinal galley to port in passage to aft cabin
- Gas stove (2 burners and oven)
- Double sink
- Large electric coolbox (water cooled ISOTHERM unit)
- Heads compartment amidships to starboard
- Carpet in saloon and cabins (new 2011)

Technical Equipment

- VOLVO PENTA MD22L 4 cylinder inboard diesel 48 hp/36 kw
- Shaft drive with Aqua Drive
- 3-bladed feathering propeller MAXPROP
- Bowthruster VETUS 7 hp
- Diesel heating EBERSPÄCHER D3LC with outlets in saloon, both cabins and in heads compartment
- 230 V shore power connection with battery charger STERLING 12 V/30 A
- 230 V sockets
- 3 x service battery 12 V/130 Ah (all new in 2014)
- Starter battery 12 V/55 Ah (new 2011)
- Fresh water tank and diesel tank in stainless steel
- Hot water boiler
- Stainless steel holding tank approx. 90 l with Y-valve, deck connection and sea-discharge
- Electric discharge pump for holding tank

Navigation/Electronics

- AUTOHELM ST50 log
- ST50 echol sounder
- ST50 wind display
- ST50 GPS/Navdata display
- ST50 Multi display at chart table
- Autopilot RAYMARINE EV 200 Linear pack T70158 with control unit p70 (new 2015)
- GPS/chartplotter RAYMARINE C120w (new 2010) with bracket behind windscreen and second bracket at charttable
- AIS-receiver RAYMARINE AIS250 (new 2010)
- Weather receiver FMD20
- R[&]R combi antenna Delta 1000s
- Compass
- VHF radio SIMRAD RS35 with wireless unit HR35 (new 2015)
- Isolated backstay
- Radio/CD-player PANASONIC with two speakers in saloon and two cockpit speakers
- Schatz clock, barometer and hygrometer

Safety

- Liferaft in bracket at pushpit
- 6 lifevests SECUMAR
- Jackstays on deck
- SECUMAR horseshoe
- Rescue line 100 m
- Electric and manual bilge pump
- Fire extinguishers
- Electric remote switch for gas valve in galley
- Radar reflector in mast

Accessories

- 2 folding bicycles DAHON Vitesse (black and white) new 2010
- Dinghi Quicksilver type QS220 ultra light (new 2011)
- HONDA outboard engine BF 2.3 hp (new 2009)
- Fenders
- Mooring lines
- Charts

Brokerage Liability Disclaimer

All information especially regarding the VAT-status of a yacht has been supplied by third parties. It is non-binding and without guarantee, subject to error and alteration. Our brokerage relies exclusively on information supplied by the vendor carefully compiled and checked by us to the best of our knowledge. Hence, a liability for correctness and completeness of provided information cannot be assumed.

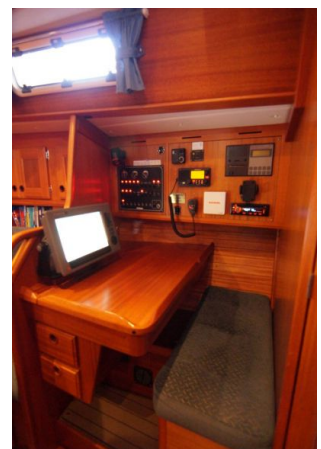
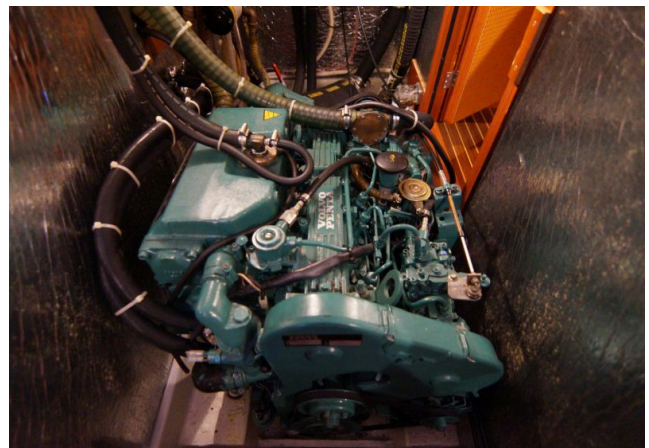
IMAGES



IMAGES



IMAGES



IMAGES

