



# LINSSEN GRAND STURDY 40.9 SEDAN

Year 2014



DIAMOND

DIAMOND Yachts, Yachtzentrum Baltic Bay  
Börn 17 | 24235 Laboe

# LINSSEN GRAND STURDY 40.9 SEDAN



**Boat sold.**

## Main Info

<b>Model</b>	Linssen Grand Sturdy 40.9 Sedan
<b>Manufacturer</b>	Linssen Yachts b.v. (NED)
<b>Designer</b>	Anne Elsinga
<b>Category</b>	Steel displacement yacht
<b>Year</b>	2014
<b>Location</b>	Kieler Förde
<b>Flag</b>	Germany
<b>VAT status</b>	EU-VAT paid
<b>Material</b>	Steel
<b>Cabins</b>	2
<b>Berths</b>	4

## Dimensions & Material

<b>LOA</b>	12.85 m
<b>LWL</b>	10.80 m
<b>Beam</b>	4.30 m
<b>Draft</b>	1.20 m
<b>Displacement</b>	15.5 t
<b>Engine</b>	VOLVO PENTA D3-110
<b>Power</b>	110 PS/81 KW
<b>Drive</b>	Shaft drive
<b>Fresh water</b>	440 L
<b>Fuel</b>	820 L
<b>Holding tank</b>	240 L

## Key Facts

- Cherry wood interior (genuine wood veneer).
- Air draft: approx. 2,78 m.
- Bow and stern thrusters.
- Co-pilot seat.
- Large sliding roof in saloon ceiling.
- Bright saloon with 360° panoramic view.
- Exceptionally ample storage space.
- Inverter 2.500 W.

## Description

Linssen Yachts – the epitome of steel displacement cruisers. Since 1949, the Dutch shipyard in Maasbracht has been building high-quality, sturdy displacement yachts and has become the market leader in this segment. The Grand Sturdy model range is characterized by its distinctive, bold design, spacious living areas both above and below deck, and outstanding handling. The Sedan models were specifically developed for inland waterways with numerous bridges, featuring a low air draft by eliminating the aft cabin and raised helm station. The largest model in this series is the Linssen Grand Sturdy 40.9 Sedan. With an impressive beam of 4.30 m, it offers exceptional comfort and living space, including a bright and inviting saloon with a 360° panoramic view, two generous cabins, and a heads compartment with separate shower. The large cockpit features a teak table and a wrap-around U-shaped seating area. This well-maintained owner's yacht is now available for sale by her first owner. She has been stored in heated winter storage every year and has been professionally serviced and maintained throughout. A special interior feature is the swiveling co-pilot seat opposite the helm on the starboard side of the coachhouse. This Linssen Grand Sturdy 40.9 Sedan has the traditional American cherry wood finish with genuine wood veneer and is powered by the popular, extremely reliable, and smooth-running VOLVO PENTA D3-110 5-cylinder diesel engine. The comprehensive specification includes bow ...

## Deck

- Original Linssen chafing protection rails on hull sides
- Heavy-duty rubber chafing protection rails around the swim platform extending to midship
- Electric anchor windlass LOFRANS 1.200 W
- Mooring gear: BRUCE anchor 20 kg with 50 m of 10 mm anchor chain
- Solid stainless steel mooring cleats fore and aft, plus spring cleats amidships and additional cleats on swim platform
- Sturdy all-round stainless steel railing with guardrails on starboard and port, incl. integrated side boarding ladders
- Folding, powder-coated antenna mast with shrouds and two spreaders on forward coachhouse roof
- Spacious cockpit with wrap-around teak seating and aft access door to swim platform
- Large cockpit table in teak and stainless steel
- Teak decking on cockpit floor
- Convertible cockpit cover (aft and side panels can be removed, leaving a sunroof)
- Solid, high-gloss varnished teak entrance doors to coachhouse
- Stainless steel handrails on both sides of coachhouse roof
- Swim platform with teak grating and retractable swim ladder
- Stern shower hot/cold
- Three electric windscreen wipers with washer system

## Technical Equipment

- VOLVO PENTA D3-110 5-cylinder turbo diesel 110 hp /81 KW
- Operating hours (as of October 2024): 1.717 h
- Electronic engine control EVC with electronic throttle
- Shaft drive with flexible Aquadrive coupling
- Large, sound-insulated engine room with excellent service access
- Bow thruster SIDEPOWER 24 V/120 Kgf with two separate 12 V/90 Ah batteries
- Stern thruster SIDEPOWER 12 V/100 Kgf with separate 12 V/90 Ah battery
- Hydraulic steering system
- Alternator 12 V/140 A
- Shore power 230 V/16 A with charging cable
- 230 V outlets throughout interior
- Combined battery charger and inverter MASTERVOLT Mass Combi 12 V/100 A/2.500 W
- 5 x gel service batteries 12 V/85 Ah
- Starter battery 12 V/90 Ah
- Additional battery charger for bow and stern thruster batteries
- Hot water boiler 60 l (heated via engine heat exchanger and 230 V heating element)
- Diesel heating EBERSPÄCHER Airtronic D5
- Holding tank approx. 240 l with deck connection and sea discharge

## Layout/Interior

- U-shaped saloon sofa around folding saloon table with "Easy Sleep Convert System" (dinettes convert into additional double berth)
- Helm station to port with wooden steering wheel, instrument console, and longitudinally adjustable helm seat
- Leather saloon upholstery (color: "Crème")
- Swiveling co-pilot seat to starboard (custom solution)
- Longitudinal galley aft to port
  - Corian work top
  - 3-burner gas stove
  - Stainless steel sink
  - Refrigerator approx. 110 l
  - Ample storage in lockers, compartments, and drawers
- Owner's cabin in foreship with island double berth, lockers, two portholes, and deck hatch
- Guest cabin to port with two single berths, locker, porthole, and deck hatch
- Heads compartment to starboard with sink and electric toilet
- Separate shower to starboard
- Curtains for coachhouse windows and portholes in cabins

## Navigation/Electronics

- Instrument display RAYMARINE i50 Tridata with sensor for log and echo sounder
- 12" multifunction display RAYMARINE C125
- GPS receiver RAYMARINE RS130
- Autopilot RAYMARINE with control unit p70R
- VHF radio RAYMARINE Ray240E
- Marine entertainment system FUSION with two loudspeakers in saloon and two cockpit loudspeakers
- WEMPE clock, barometer, thermometer/hygrometer

## Safety

- Automatic fire extinguishing system in engine room
- Fire extinguisher
- Life raft
- 2 x electric and manual bilge pump
- Electric signal horn

### Accessories

---

- Seat and backrest cushions for cockpit benches
- Removable stainless steel bow ladder
- Fenders
- Mooring lines

---

#### Brokerage Liability Disclaimer

All information especially regarding the VAT-status of a yacht has been supplied by third parties. It is non-binding and without guarantee, subject to error and alteration. Our brokerage relies exclusively on information supplied by the vendor carefully compiled and checked by us to the best of our knowledge. Hence, a liability for correctness and completeness of provided information cannot be assumed.



## IMAGES





## IMAGES





## IMAGES





## IMAGES



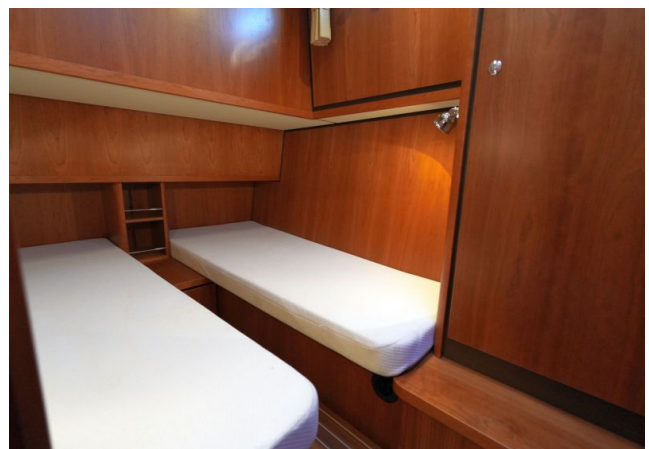


## IMAGES



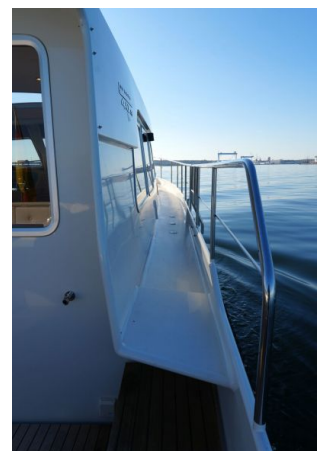
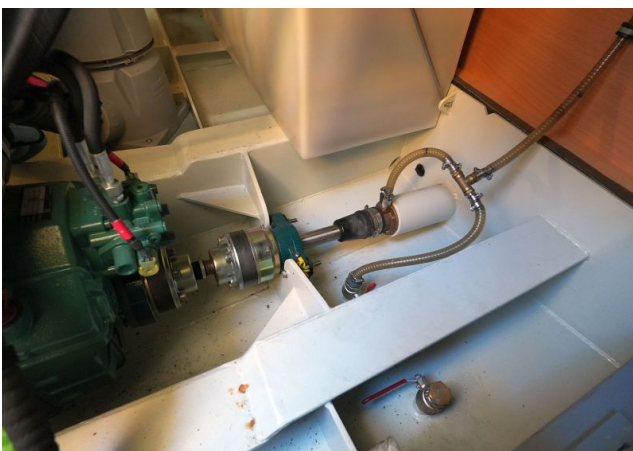


## IMAGES





## IMAGES



## IMAGES

