



HALLBERG-RASSY 34 SCANDINAVIA

Year 1992



DIAMOND

DIAMOND Yachts, Yachtzentrum Baltic Bay
Börn 17 | 24235 Laboe

HALLBERG-RASSY 34 SCANDINAVIA



Boat sold.

Main Info

Model	Hallberg-Rassy 34 Scandinavia
Manufacturer	Hallberg-Rassy Varvs AB
Designer	Germán Frers
Category	Sailing yacht
Year	1992
Location	Kieler Förde
Flag	Germany
VAT status	EU-VAT paid
Material	GRP
Rig	Sloop
Cabins	2
Berths	6

Dimensions & Material

LOA	10.28 m
LWL	8.64 m
Beam	3.42 m
Draft	1.85 m
Displacement	5.3 t
Sail area	56 m ²
Engine	VOLVO PENTA MD2030
Power	28 PS/21 KW
Drive	Saildrive with VARIPROP
Fresh water	250 L
Fuel	140 L
Holding tank	55 L

Key Facts

- Traditional Scandinavian boat building.
- Cockpit with fixed windscreen.
- Tiller steering.
- Stiff yacht (ballast ratio: approx. 40 %).
- "Scandinavia" specification.
- HR-34 with L-shaped galley.

Description

Seaworthy, solid cruiser built by Hallberg-Rassy in Ellös on the boatbuilder's island of Orust in the Swedish Western Archipelago. With more than 480 units built, the Hallberg-Rassy 34 was one of the yard's most successful models. She is a very seaworthy, stiff boat for this class (lead keel with a ballast of 2.100 kg/ballast ratio: approx. 40 %), but she is fast and easy to sail nevertheless. The safe, deep cockpit is well protected by a fixed windscreen with sprayhood and has a high, comfortable coaming. Despite her manageable size, the Hallberg-Rassy 34 offers plenty of space and comfort in the interior. 2 cabin layout with forward facing chart table, large heads compartment and a solid, satin-varnished mahogany interior in the best Scandinavian boatbuilding tradition with lots of solid wood and well finished details. Well-equipped yacht with "Scandinavia"-specification (lead keel, headsail furling system, windshield, larger winches, etc.) offered by her second owner. Version with tiller steering and interior layout with L-shaped galley. The yacht is offered for personal reasons, is available for immediate delivery, is located on the Kiel Fjord and can be viewed at any time upon appointment.

Rig/Sails

- Deck-stepped, 9/10 fractional SELDEN mast
- Two sets of spreaders
- SELDEN main boom with two reefs (1 line reefing system)
- FURLEX genoa furling system
- Manual backstay tensioner
- Fixed SELDEN kicker with gas spring
- Spinnaker pole (stowed on mast)
- Aluminum protection for rigging screws
- Mainsail approx. 29 m² (new 2015)
- Lazy jacks with lazy bag
- Furling genoa approx. 30 m² with canvas cover
- Furling jib approx. 23 m² (new 2019) with UV-protection

Deck

- Teak deck on running decks, cockpit seats and cockpit floor (teak deck new 2010)
- Genoa winches LEWMAR 43.2STC
- Fixed windscreen with outside handrails and opening center window
- Varnished companionway and bulkheads
- Sprayhood (new 2019) with grab rail aft
- Cockpit cover
- Large locker below cockpit seat to starboard
- Second locker aft in cockpit
- Removable cockpit table
- Swim ladder
- Bow ladder
- Solid, laminated rubbing strake with brass profile on hull sides
- Spring cleats
- Outboard engine bracket on pushpit
- Mooring gear: CQR-anchor 12 kg with chain lead

Layout/Interior

- Beautiful, solid, satin varnished mahogany interior in the best Swedish boatbuilder's tradition
- Floorboards with teak veneer and light-colored stripes
- 2 cabin layout with L-shaped sofa to port and longitudinal sofa to starboard at the folding saloon table
- L-shaped galley to port
 - Gas stove (3 burners and oven)
 - Double sink
 - Additional fresh water foot pump
 - Electric cool box
 - Storage space in cupboards, lockers and drawers
- Forward facing chart table with navigator's seat and switch panel to starboard aft
- Forward cabin with wide double berth, lockers and storage compartments
- Aft cabin to port with double berth, locker and storage space
- Heads compartment to starboard aft with washbasin and marine toilet (new 2020)
- Carpet (new 2018)
- Interior lighting via ceiling lights and reading lamps

Technical Equipment

- VOLVO PENTA 2030 3-cylinder inboard diesel 28 hp/21 KW (year 1995)
- Saildrive with 3-blade VARIOROP feathering propeller (new 2006)
- Stainless steel diesel tank approx. 140 l
- 230 V shore power connection with charging cable
- Mobitronic 12 V/25 A battery charger
- Service battery 12 V/140 Ah
- Starter battery 12 V/70 Ah (new 2023)
- Solar panel on coachhouse roof
- Stainless steel holding tank approx. 60 l
- Pressurized water system

Navigation/Electronics

- Instruments:
 - RAYMARINE ST60+ log (new 2013)
 - CLIPPER echo sounder
 - TackTick Micronet wind display mn30
 - ST50 Multi
- GPS-receiver GARMIN GPS 128
- Autopilot RAYMARINE ST4000 (tiller pilot)
- VHF-radio Standard Horizon Matrix AIS GX2100 incl. AIS-receiver
- Compass
- Radio/CD/MP3-player with two loudspeakers in saloon
- Clock

Safety

- Life raft for 4 persons in bracket on pushpit (service interval expired)
- Fire extinguisher
- Manual bilge pump
- Radar reflector

Accessories

- Additional anchor: Plate anchor 5 kg
- Fenders
- Mooring lines

Brokerage Liability Disclaimer

All information especially regarding the VAT-status of a yacht has been supplied by third parties. It is non-binding and without guarantee, subject to error and alteration. Our brokerage relies exclusively on information supplied by the vendor carefully compiled and checked by us to the best of our knowledge. Hence, a liability for correctness and completeness of provided information cannot be assumed.

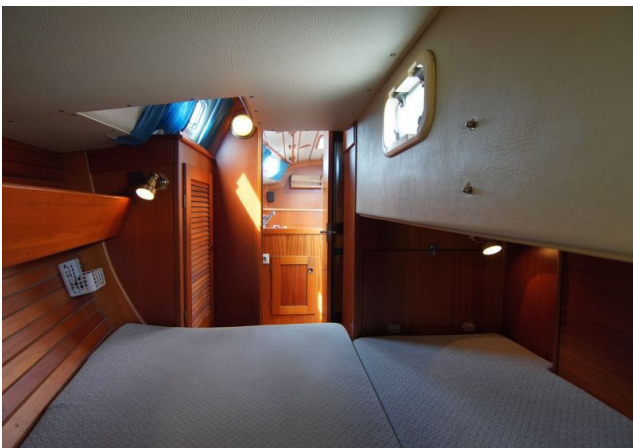
IMAGES



IMAGES



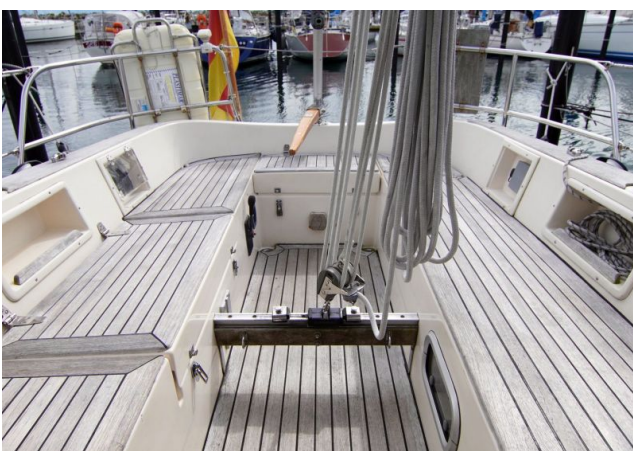
IMAGES



IMAGES



IMAGES



IMAGES



IMAGES

