



# SOLARIS 47

Year 2016



DIAMOND Yachts, Yachtzentrum Baltic Bay  
Börn 17 | 24235 Laboe

# SOLARIS 47



**Boat sold.**

## Main Info

<b>Model</b>	Solaris 47
<b>Manufacturer</b>	Solaris Yachts Srl. (ITA)
<b>Designer</b>	Javier Soto Acebal
<b>Category</b>	Performance-Cruiser
<b>Year</b>	2016
<b>Location</b>	Baltic Bay-Marina/Laboe
<b>Flag</b>	Germany
<b>VAT status</b>	EU-VAT paid
<b>Material</b>	GRP
<b>Rig</b>	Sloop with carbon mast
<b>Cabins</b>	3
<b>Berths</b>	6

## Dimensions & Material

<b>LOA</b>	14.35 m
<b>LWL</b>	13.40 m
<b>Beam</b>	4.36 m
<b>Draft</b>	2.55 m
<b>Displacement</b>	13 t
<b>Sail area</b>	129 m <sup>2</sup>
<b>Engine</b>	VOLVO PENTA D2-75
<b>Power</b>	75 PS/55 KW
<b>Drive</b>	Saildrive with folding propeller
<b>Fresh water</b>	440 L
<b>Fuel</b>	280 L
<b>Holding tank</b>	50 L

## Key Facts

- Sleek lines and low coachhouse profile.
- Interior finished in bleached oak.
- Excellent performance.
- HALL-Spars carbon mast.
- Retractable bowthruster.
- Dinghy garage in stern.
- FURLERBOOM boom.
- Teak deck all over.

## Description

A fast, modern performance cruiser and a reliable and seaworthy cruising yacht. Elegant contemporary, Italian design and a gem of traditional boatbuilder's craftsmanship. The Solaris 47 is all of these, and like all Solaris sailing yachts, this model is an extremely rigid unit. The 40 mm composite main bulkhead, a solid structure of individually laminated beams and stringers vacuum laminated to the hull, and composite chainplates are just some of the technical features that make the Solaris 47 a stiff, monolithic construction. Efficient appendices, a powerful rig and a modern wedge-shaped hull with slim forward section and wide stern with chines provide performance and fun on the water. Clever deck layout with plenty of cockpit space and free passage to sundeck and the large fold-out swim platform. This Solaris 47 is a well-maintained and fully equipped owner's yacht. Performance-rig with HALL-Spars carbon fibre mast and furling boom by FURLERBOOM. Extensive specification incl. retractable bow thruster, electric winches, central hydraulic panel for backstay and vang, B[&]G H5000 system incl. maxi displays on mast, radar, AIS etc. Bright bleached oak interior and two aft cabins with double berths. Teak deck all over and exclusive flush mounted SOLIMAR deck hatches. The Solaris 47 is moored here in the Baltic Bay-Marina in Laboe on Kiel Fjord and can be handed over ready to sail at short notice.

## Rigging/Sails

- Keel stepped, 9/10 fractional carbon fibre mast by HALL-Spars
- Two sets of aft-swept spreaders
- Standing rigging in rod
- Furling boom FURLERBOOM T20 Offshore
- Cockpit lighting in furling boom
- HARKEN genoa furling system with drum below decks
- Hydraulic backstay tensioner HARKEN (two cylinders)
- Hydraulic vang HARKEN
- Central HARKEN hydraulic panel in cockpit for backstay tensioner and boom vang
- LED 3 colour light in mast top
- Gennaker/code-0 gear incl. 2:1 halyard for Code-0
- HARKEN tracks and line-adjustable sheeting points for genoa sheets
- Self-tacking jib and traveller integrated in foredeck
- Furling mainsail for furling boom ELVSTRÖM EPEX double taffetta approx. 73 m<sup>2</sup> with five full length battens (new 2020)
- Furling genoa 105 % approx. 59 m<sup>2</sup> with UV-protection
- Gennaker ELVSTRÖM in snuffer
- Code-0 ELVSTRÖM CZ60 approx. 118 m<sup>2</sup> on SELDEN furling system
- Staysail as storm jib

## Deck

- Teak deck with grey caulking on running decks, coachhouse roof, swim platform and in cockpit
- Main sheet in T-system
- Two electric winches HARKEN Performa 60.2STEP
- Two manual winches HARKEN Performa 60.2STP
- Halyard stowage bags with stainless steel brackets on winch consoles
- Flush-mounted SOLIMAR deck hatches
- Two JEFA steering pedestals with large instrument consoles and clear-coated carbon fibre steering wheels
- Electric anchor windlass 1.500 W below decks with remote control in cockpit
- Mooring gear: DELTA-anchor 20 kg with 75 m anchor chain 10 mm
- Folding cockpit table in teak and stainless steel
- Retractable stainless steel mooring cleats fore and aft
- Retractable stainless steel spring cleats amidships
- Stainless steel chafe protection on cleats
- Railing gates to starboard and port
- Life lines in Dyneema
- Large, electric folding swim platform
- Swim ladder
- Stern shower hot/cold
- Lazarette as dinghy garage below aft deck
- Deck locker below port cockpit seat
- Sprayhood (new 2020)

## Layout/Interior

- 3 Cabin layout with forward owner's cabin and two heads compartments
- Light bleached oak interior
- Saloon with U-shaped dinette to port
- Retractable saloon table (can be converted to double berth)
- Two chairs at saloon table
- Longitudinal sofa to starboard
- Chart table to starboard aft
- Hull windows in saloon
- L-shaped galley to port aft
  - Worktop in light grey CORIAN
  - Electric cool box approx. 100 l
  - Second refrigerator
  - Double sink
  - Alpes Inox gas stove (3 burners and oven)
- Owner's cabin with island double berth, seats, storage compartments, drawers and lockers
- En-suite owner's heads to port with separate shower and electric toilet
- Hull windows in owner's cabin
- Two symmetric aft cabins with double berth
- OCEANAIR blinds and mosquito screens in deck hatches
- Vanity tables in both heads compartments in carbon finish
- LED interior lighting
- Indirect LED lighting

## Technical Equipment

- VOLVO PENTA D2-75 4 cylinder turbo diesel engine 75 hp/55 KW
- Saildrive with 3 bladed folding propeller Flex-o-Fold
- Stainless steel fuel tank approx. 280 l
- Retractable bow thruster MAXPOWER VIP 150
- 230 V shore power with 230 V sockets in the interior
- Battery charger MASTERVOLT 12 V/80 A
- 3 x AGM service battery 12 V/115 Ah
- 2 x AGM starter battery 12 V/75 Ah
- Inverter 12 V/230 V/1. 200 W
- Diesel heater WEBASTO AirTop 5000ST
- Electric compressor for dinghy
- Electric toilet PLANUS in owner's heads
- Stainless steel holding tank with deck connection and sea discharge
- LED navigation lights

## Navigation/Electronics

- BROOKS [&] GATEHOUSE H5000 system
- Transducers for echo sounder, log and wind
- 2 x B[&]G H5000 GFD display
- Analogue B[&]G 360° wind display
- 3 x B[&]G H5000 20/20 maxi displays in bracket at mast
- Autopilot B[&]G with control unit H5000 GPD, H5000 processor and drive Ram T2 12 V
- GPS/chartplotter 7" B[&]G Zeus EVO2 in console at helm
- AIS-transponder SIMRAD NAIS-400
- GPS-receiver B[&]G ZG100
- Radar antenna B[&]G 3G Broadband at mast
- VHF-radio B[&]G V50 with second wireless unit H50 and external speaker in cockpit
- 2 x steering compasses on steering pedestals
- SIMRAD Go-Free WLAN access
- WLAN router with mast antenna
- Marine Entertainments System FUSION MS-IP750 (Radio/CD/DVD/USB-player) with speakers in saloon and cockpit speakers
- TV PANASONIC in saloon to starboard

## Safety

- Life raft 6 pers.
- Electric and manual bilge pump
- Fire extinguisher

### Accessories

---

- Dinghy Aermarine Convertible RIB 245
- Cockpit cushions
- Sun bathing mattresses for aft deck
- Covers for steering wheels and cockpit table
- Fenders
- Mooring lines

---

#### Brokerage Liability Disclaimer

All information especially regarding the VAT-status of a yacht has been supplied by third parties. It is non-binding and without guarantee, subject to error and alteration. Our brokerage relies exclusively on information supplied by the vendor carefully compiled and checked by us to the best of our knowledge. Hence, a liability for correctness and completeness of provided information cannot be assumed.



## IMAGES





## IMAGES





## IMAGES





## IMAGES

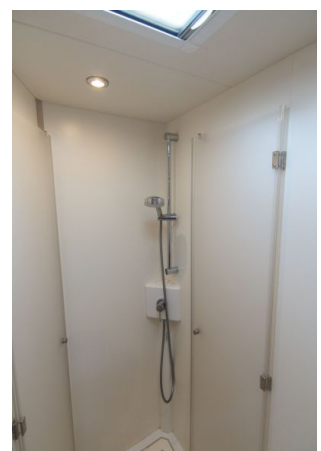
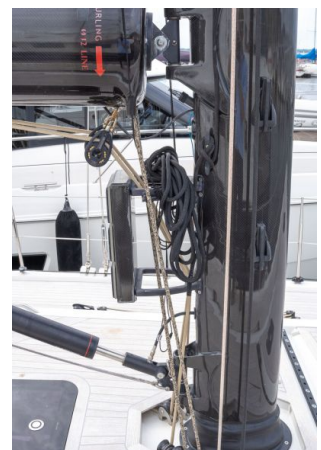
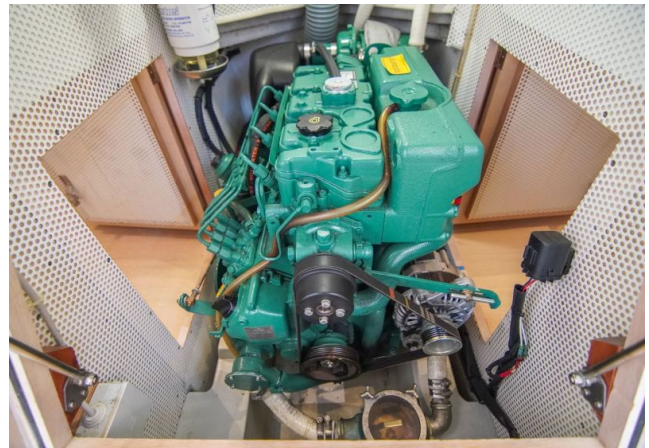


## IMAGES





## IMAGES





## IMAGES

