



NAJAD 460

Year 2005



DIAMOND

DIAMOND Yachts, Yachtzentrum Baltic Bay
Börn 17 | 24235 Laboe

NAJAD 460



Boat sold.

Main Info

Model	NAJAD 460
Manufacturer	Najadvarvet AB (SWE)
Designer	judel/vrolijk & co.
Category	Centercockpit-cruiser
Year	2005
Location	Ostsee
Flag	Germany
VAT status	EU-VAT paid
Material	GRP
Rig	Sloop with furling mast
Cabins	3
Berths	6

Dimensions & Material

LOA	13.95 m
LWL	11.88 m
Beam	4.28 m
Draft	2.15 m
Displacement	15.5 t
Sail area	100 m ²
Engine	YANMAR 4JH3-HTE
Power	100 PS/74 KW
Drive	Shaft with folding propeller
Fresh water	565 L
Fuel	460 L
Holding tank	150 L

Key Facts

- Elegant, modern lines by judel/vrolijk & co.
- Exclusive Rhoades/Young interior.
- Full stainless steel deck equipment.
- Diesel generator 3,5 KW and inverter 2 KW.
- Electric winches and bowthrustrer.
- Very good condition.

Description

Modern, fast and very seaworthy Bluewater-cruiser built by the quality yard Najadvarvet on the island of Orust at the Swedish westcoast. The NAJAD 440cc offers everything you need for long distance sailing: Excellent performance thanks to judel/vrolijk [&] co.-design, a safe and well protected centercockpit with fixed windscreen, a solid, rigid structure and a lot of living space and comfort below decks. The NAJAD 440 marked the start of the cooperation between Najadvarvet and the British designer Rhoades/Young, who created a modern, bright and timeless interior in mahogany with vinyl-covered panels. This NAJAD 440cc is offered by her first owner, has been in indoor storage every winter, has been maintained by a professional yard and is in very good condition. Fully equipped incl. electric winches, bowthrustrer, diesel generator, high quality sail wardrobe and complete RAYMARINE navigation.

Rigging/Sails

The NAJAD 440cc is rigged with a keel stepped, 9/10 fractional SELDEN furling mast with three sets of aft swept spreaders. FURLEX genoa furler, hydraulic backstay adjuster HOLMATRO, aluminium tubes for rigging screws, 3 colour-light and anchor light in mast top, sails: Furling mainsail UK-Syversen TapeDrive Carbon approx. 52 m² with vertical battens, furling jib UK-Syversen 10 5% TapeDrive Carbon with vertical battens approx. 44 m², gennaker NORTH-Sails approx. 137 m² with snuffer and gennaker gear.

Deck

Teakdeck on running decks, coach house roof, aft deck, swim platform and in cockpit, electric anchor windlass 1.500 W with chain counter, ground tackle: DELTA-anchor 25 kg and 60 m anchor chain 10 mm, electric genoa winches ANDERSEN 52.2STE in stainless steel, electric mainsheet winch ANDERSEN 40.2STE in stainless steel on portside, fixed windscreen with stainless steel frame and opening central window, sprayhood with stainless steel grab rail aft, cockpit cover, stainless steel pushpit with integrated teak seats, gates in life lines to starboard and port, folding teak cockpit table, high gloss varnished chart table and companionway, retractable BESENZONI davits, stainless steel mooring cleats and spring cleats, stainless steel rail on rubbing strake and stainless steel chafing protection at mooring cleats, stainless steel guard rail on bow, stern shower hot/cold, swim ladder, folding bow ladder.

Layout/Interior

Exclusive, bright and modern interior in mahogany and vinyl-padded panels (interior design: Rhoades/Young London). Saloon with L-shaped dinette on folding saloon table to port and sofa to starboard, large charttable to starboard aft. Longitudinal galley on portside in passage to aft cabin with CORIAN worktop, gas stove (3 burners and oven), double sink, large electric coolbox and 230 V microwave. Spacious owner's cabin aft with island double berth, plenty of storage space in lockers, drawers and shelves and en-suite owner's heads to starboard. Forward cabin with V-shaped double berth, second heads compartment with separate shower cabin on port side. Carpet, OCEANAIR blinds and mosquito screens in deck hatches, venetian blinds for coach house windows in saloon, portholes in transom, Alcantara upholstery.

Technical Equipment

VOLVO PENTA D2-75 4 cylinder inboard diesel 75 hp/55 kw with saildrive and 3 bladed MAXPROP feathering propeller, bowthruster MAXPOWER, 230 V shore power connection with 230 V sockets below decks, MASTERVOLT Mass Combi combined battery charger 24 V/60 A and inverter 24 V/230 V/2.000 W, diesel generator MASTERVOLT Whisper 3,5 KW, 3 x AGM service batteries 24 V/130 Ah, starter battery 12 V/110 Ah (all batteries new in 2015), diesel heating EBERSPÄCHER D5L with extra outlet in cockpit, hot water heater 40 l, 2 x stainless steel holding tank 70 l with Y-valve, deck nozzle and sea-discharge, red night lights in interior, dimmer for saloon lighting.

Navigation/ Electronics

Instruments above companionway: RAYMARINE ST60 log, ST60 depth sounder, ST60 wind, ST60 graphic, GPS/chartplotter RAYMARINE E120 in cockpit behind windscreen, autopilot RAYMARINE ST6001 with Mamba drive, compass, VHF RAYMARINE 240E Dual with two external speakers, digital radar antenna RAYMARINE (new 2015), AIS transponder with additional WLAN antenna, marine-PC TinyByte with screen and RAYMARINE keyboard at chart table, RAYMARINE ST60 graphic at chart table, VETUS Meteoline barograph, weather receiver WEFax501 with integrated printer, R/G/R-combi antenna Pacific (VHF/FM/AM/TX), external WLAN antenna, radio/CD-/DVD-player PIONEER with four speakers in saloon and two cockpit speakers, flatscreen TV in saloon to starboard.

Safety

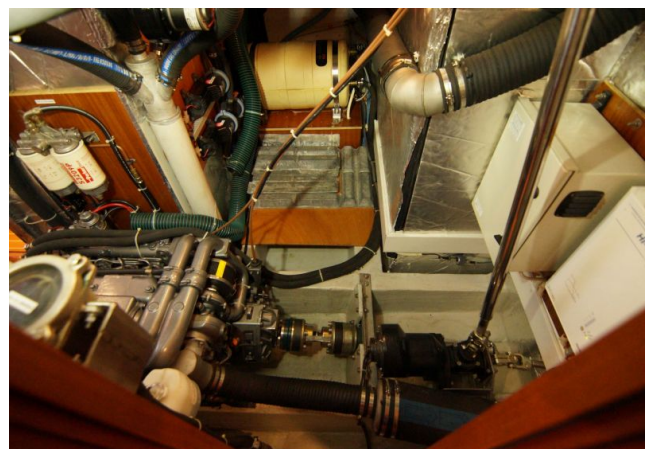
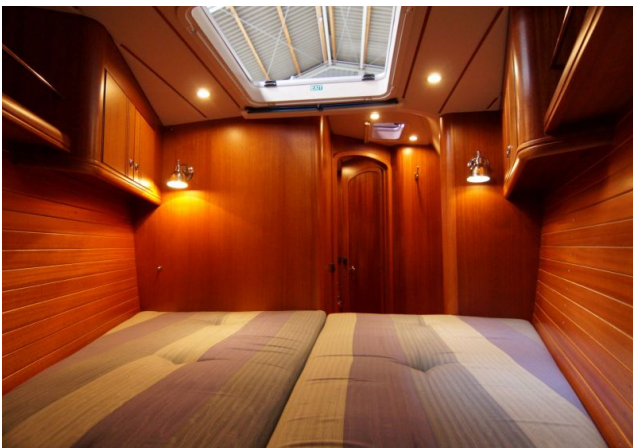
IMAGES



IMAGES



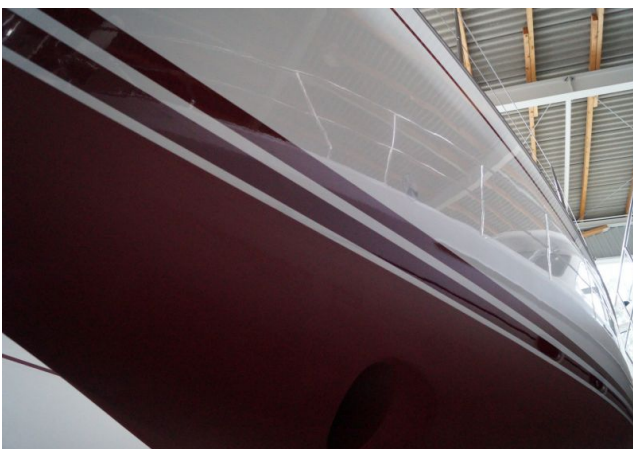
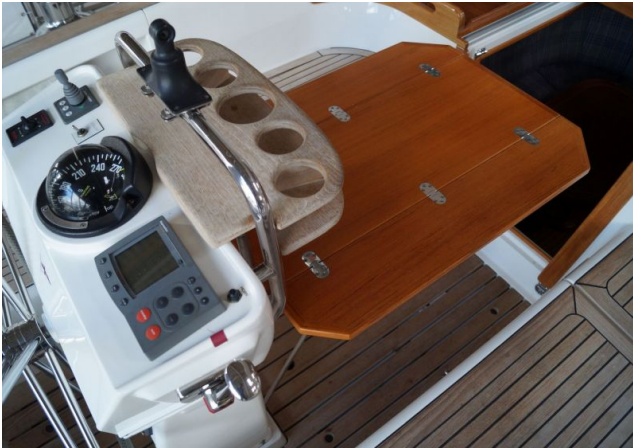
IMAGES



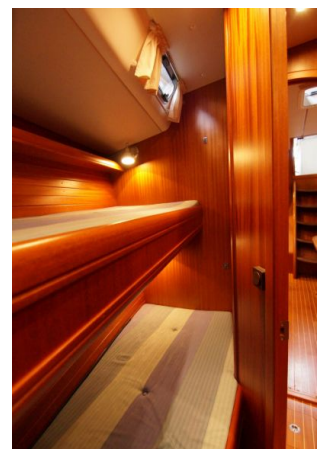
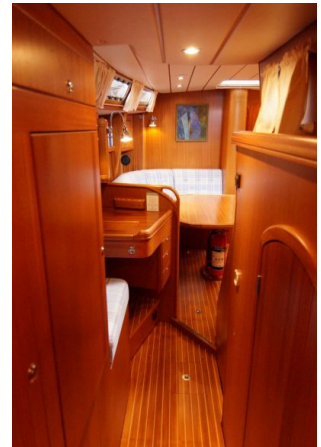
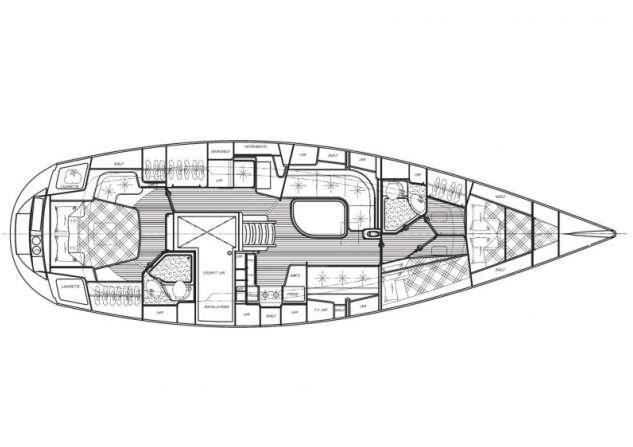
IMAGES



IMAGES



IMAGES



IMAGES

