



JEANNEAU 54

Year 2016



DIAMOND Yachts, Yachtzentrum Baltic Bay
Börn 17 | 24235 Laboe

JEANNEAU 54



Boat sold.

Main Info

Model	Jeanneau 54
Manufacturer	Chantiers Jeanneau SA (FRA)
Designer	Philippe Briand
Category	Cruiser
Year	2016
Location	Baltic Bay-Marina/Laboe
Flag	Germany
VAT status	EU-VAT paid
Material	GRP
Rig	Sloop with furling mast
Cabins	3
Berths	6

Dimensions & Material

LOA	16.16 m
LWL	14.25 m
Beam	4.92 m
Draft	1.80 m
Displacement	18 t
Sail area	111 m ²
Engine	YANMAR 4JH4-TE
Power	75 PS/55 KW
Drive	Shaft drive
Fresh water	724 L
Fuel	240 L
Holding tank	210 L

Key Facts

- Comprehensive technical specification.
- Shallow draft version (draft: 1,80 m).
- Jeanneau 54 with furling mast.
- 3 cabin owner's version.
- Bow thruster and stern thruster.
- Lithium service batteries.
- Interior in light oak.
- Diesel generator.

Description

A striking appearance from the outside with a flat superstructure, the characteristic lateral coachhouse windows and the large panoramic windows in the front, the Jeanneau 54 offers plenty of space and comfort in her spacious interior with three cabins, each with a separate heads compartment, and her light-flooded saloon. The modern interior in light oak by British star designer Andrew Winch creates a pleasant, airy atmosphere. There is also plenty of living space on deck, and the two sun loungers in the cockpit, two more on the fold-down swim platform and a sun mattress set into the foredeck invite you to sunbathe at anchor. Completely undisturbed by passengers, the skipper can maneuver the Jeanneau 54 practically single-handed: All halyards, sheets and controls are led back to the two sets of winches in front of the helm station and the controls for engine, thrusters, furling systems, windlass, etc. are also centrally located here. This Jeanneau 54 is an extensively equipped private yacht (no charter vessel) offered by her first owner. After delivery, the yacht has been optimised for comfortable, short handed cruising by adding numerous installations and replacing several standard components. For example, the complete energy management system was replaced by a large Whisper Power DC diesel generator, chargers, inverter and a lithium service battery bank all by Whisper Power. An electric headsail furling system, a retractable stern thruster, a satellite TV-antenna and ...

Rig/Sails

- Deck-stepped, 9/10 fractional furling Z-Spars mast
- Two sets of aft-swept spreaders
- Electric headsail furling system FURLEX 400e
- Spinnaker pole as dinghy crane on mast
- Genoa tracks on deck
- HARKEN track with traveller for self-tacking jib forward of mast
- Furling mainsail ELVSTRÖM Hydranet triradial approx. 48 m² (new 2021) with continuous vertical battens
- Self-tacking jib ELVSTRÖM Hydranet triradial approx. 49 m² (new 2022) with vertical battens and UV-protection
- Standard 105 % Genoa Dacron approx. 63 m² (never used)

Deck

- Teak deck on running decks, swim platform and in cockpit
- Electric anchor windlass LEWMAR 1.500 W with remote control and chain counter in cockpit
- Mooring gear: Stainless steel strap-anchor 30 kg and 100 m anchor chain 10 mm
- Large, self-draining anchor locker
- Two steering positions with large consoles for instruments and folding helm seats
- Electric genoa winches HARKEN 70.2CEST
- Electric rewind winches HARKEN 46.2RWC as secondary winches
- Spacious sail locker below foredeck
- Sprayhood
- Bimini
- Railing gates with integrated folding boarding ladder to starboard and port
- Large electro-hydraulic folding swim platform
- Retractable dinghy davits aft
- Large NOMEN folding cleats fore and aft and amidships
- Additional spring cleats amidships
- Teak rubbing strake on hull sides
- Fender rack on coachhouse roof
- Comfortable folding swim ladder
- Large, folding GRP cockpit table with storage compartment and electric coolbox
- Courtesy lighting in cockpit

Layout/Interior

- Jeanneau 54 in 3 cabin layout with 3 heads and owner's cabin forward
- Light-coloured ALPI oak interior with dark oak floorboards ("Contemporary Style" interior, design: Andrew Winch)
- Spacious, comfortable saloon with seating area and central bench seat at folding and electric lifting saloon table to starboard
- Longitudinal galley to port
 - Worktop in white Corian
 - Gas stove (3 burners and oven)
 - Electric remote switch for gas valve
 - Extractor hood
 - Microwave 230 V
 - Dishwasher
 - Double sink
 - Large refrigerator
 - Freezer compartment
- Luxurious, bright forward owner's cabin with island double berth, settee, three deck hatches, two skylights, two hull windows and ample storage in locker, drawers and storage compartments
- En-suite owner's heads with electric toilet and separate shower
- VIP-aftcabin to port with double berth, locker, storage compartments, hull window, and two hatches to cockpit
- Port guest heads compartment with electric toilet and separate shower
- Starboard aft cabin with two single berths, locker, storage compartments, hull window, and two hatches to cockpit
- Starboard heads compartment with electric toilet and second access from saloon
- LED overhead lighting and ambient lighting by LED strips
- Vanities in all three heads compartments in black Corian
- Blinds and mosquito screens in deck hatches

Technical Equipment

- YANMAR 4JH4-TE 4 cylinder turbo diesel 75 hp/55 KW
- Engine hours (as of May 2023): 285 h
- Shaft drive with 3 blade propeller
- Additional diesel tank 240 l (total capacity: 480 l)
- Tunnel bow thruster QUICK
- Retractable stern thruster SIDEPOWER
- Combined operation for bow and stern thruster at both helm stations
- 230 V shore power connection with charging cable
- 230 V and 12 V/USB sockets in interior
- 2 x battery charger Whisper Power DC PowerCube 24 V/150 A
- Inverter Whisper Power AC PowerCube 24 V/230 V/7.000 W
- Four lithium service batteries Whisper Power ION PP 12 V/210 Ah
- Starter battery 12 V/110 Ah
- 3 cylinder DC diesel generator Whisper Power M-GV3 8,6 KW
- 2 x diesel heating WEBASTO Air Top Evo 55
- Hot water boiler 40 l
- Fresh water shore connection
- Three electric toilets
- 3 x holding tank approx. 70 l with deck connection and sea discharge
- LED navigation lights

Navigation/Electronics

- 2 x RAYMARINE i70 instrument display with transducers for log, echo sounder and wind
- GPS/chartplotter RAYMARINE Axiom 12 Pro on starboard helm station
- GPS/chartplotter RAYMARINE Axiom 9 Pro on port helm station
- Autopilot RAYMARINE p70
- Radar antenna RAYMARINE on mast
- AIS-transponder
- VHF-radio RAYMARINE Ray70 on chart table with second station and external speaker in master cabin
- Compass
- Marine entertainment system FUSION AV-750 system with speakers in saloon and cockpit
- SAMSUNG 32" TV-screen with electric lift in the backrest of the central bench seat in the saloon
- Satellite TV-antenna KVH TV3 at mast
- Glomex Yacht-Wlan WEBoat 4G Plus
- Barometer

Safety

- Life raft
- EPIRB
- Fire extinguisher
- Smoke detector
- Manual and electric bilge pumps
- Lifesling
- Jackstays on deck

Accessories

- Cockpit cushions
- Sun bathing mattress on foredeck
- Sunbed cushions for swim platform
- Cushions on helm seats in cockpit
- Fenders
- Mooring lines

Brokerage Liability Disclaimer

All information especially regarding the VAT-status of a yacht has been supplied by third parties. It is non-binding and without guarantee, subject to error and alteration. Our brokerage relies exclusively on information supplied by the vendor carefully compiled and checked by us to the best of our knowledge. Hence, a liability for correctness and completeness of provided information cannot be assumed.

IMAGES



IMAGES



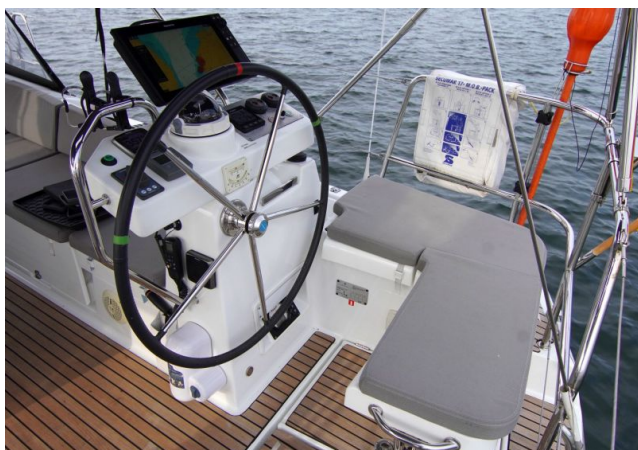
IMAGES



IMAGES



IMAGES



IMAGES



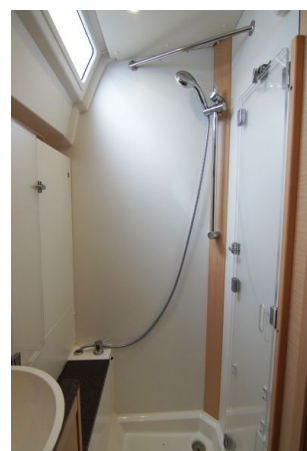
IMAGES



IMAGES



IMAGES



IMAGES

