



# HALLBERG-RASSY 342

Year 2011



DIAMOND Yachts, Yachtzentrum Baltic Bay  
Börn 17 | 24235 Laboe

# HALLBERG-RASSY 342



**Boat sold.**

## Main Info

<b>Model</b>	Hallberg-Rassy 342
<b>Manufacturer</b>	Hallberg-Rassy Varvs AB
<b>Designer</b>	Germán Frers
<b>Category</b>	Sailing yacht
<b>Year</b>	2011
<b>Location</b>	Deutsche Ostseeküste
<b>Flag</b>	Germany
<b>VAT status</b>	EU-VAT paid
<b>Material</b>	GRP
<b>Rig</b>	Sloop with furling mast
<b>Cabins</b>	2
<b>Berths</b>	4

## Dimensions & Material

<b>LOA</b>	10.32 m
<b>LWL</b>	9.09 m
<b>Beam</b>	3.42 m
<b>Draft</b>	1.82 m
<b>Displacement</b>	6 t
<b>Sail area</b>	60 m <sup>2</sup>
<b>Engine</b>	VOLVO PENTA D1-30
<b>Power</b>	30 PS/22 KW
<b>Drive</b>	Saildrive with folding propeller
<b>Fresh water</b>	265 L
<b>Fuel</b>	165 L
<b>Holding tank</b>	50 L

## Key Facts

- Agile but well-natured sailing.
- Version with tiller steering.
- Scandinavian quality.
- New sails in 2023.
- Furling gennaker with bowsprit.
- SELDEN furling mast.
- Bowthruster.
- Teak decks.

## Description

Sturdy, seaworthy cruiser built by the Swedish quality yard Hallberg-Rassy on the boatbuilder's island of Orust. The combination of agile performance and well-natured seakeeping make the Hallberg-Rassy 342 the perfect boat for families or newcomers. The deep cockpit with fixed windscreen and high coaming offers good protection and wide, unobstructed side decks enable safe movement even in rough conditions. Ample storage space throughout the yacht in lockers, drawers and compartments. For her handy size, the Hallberg-Rassy 342 offers a surprising amount of living space and comfort for a crew of up to six. The level of boatbuilding craftsmanship at the traditional Hallberg-Rassy shipyard in the western swedish archipelago sets standards: the GRP workmanship, the interior finish and the quality of the technical installations are beyond question. The Hallberg-Rassy 342 hull-number #272 offered here is a well-maintained yacht offered by her second owner. Sailed exclusively in the Baltic Sea, she has received continuous care and technical service by experts. Extensive specification incl. furling mast, bow thruster, complete FURUNO/RAYMARINE navigation, teak deck etc. Mainsail and genoa came new in 2023 and a furling gennaker incl. removable bowsprit is on board. Numerous useful modifications ex shipyard such as additional drawers below chart table, locker doors under forward berth, additional portholes in aft cabin etc. The yacht is currently on a summer cruise with her owner and ...

## Rig/Sails

- Deck-stepped, 9/10-fractional SELDEN furling mast
- Two sets of aft swept spreaders
- Headsail furling system FURLEX 200s
- Adjustable backstay
- Aluminium protection for rigging screws
- Spinnaker pole (stowed on mast)
- Genoa tracks LEWMAR with line-adjustable sheeting cars
- LED 3-colour light and anchor light in mast head
- Furling mainsail ELVSTRÖM EMS DCX trioptimal approx. 32 m<sup>2</sup> with vertical battens (new 2023)
- Furling jib ELVSTRÖM EMS DCX trioptimal approx. 28 m<sup>2</sup> with vertical battens and UV-protection (new 2023)
- Furling gennaker ELVSTRÖM approx. 74 m<sup>2</sup> on BARTELS furler (new 2013)
- Gennaker gear
- Removable stainless steel bowsprit for gennaker

## Deck

- Teak deck on running decks, swim platform and in cockpit
- Genoa winches LEWMAR 46.2STA (upgrade)
- Halyard winches LEWMAR 16.2STA on coachhouse roof
- Electric anchor windlass LEWMAR on deck
- Mooring gear: DELTA-anchor 16 kg and 40 m anchor chain 8 mm
- Solid, laminated rubbing strake with stainless steel profile on hull sides
- Tiller steering with SPINLOCK telescopic tiller extension
- Fixed windscreen with aluminium frame, exterior handles and opening central window
- Sprayhood (new 2016)
- Cockpit cover (new 2017)
- Large cockpit storage locker to starboard
- Port locker and gas locker below helm seat aft in cockpit
- Stern shower hot/cold
- Swimpladder
- Solid stainless steel mooring cleats and spring cleats
- Stainless steel chafing protection rails on cleats
- Teak outboard bracket on pushpit
- Removable teak cockpit table

## Layout/Interior

- L-shaped sofa to port and longitudinal sofa to starboard at folding saloon table
- Saloon upholstery in Alcantara
- Folding saloon sofa backrests create two additional berths
- Forward facing chart table to starboard aft
- L-shaped galley to port aft
  - Worktop in white Plexicor
  - Double sink
  - Electric cool box (water-cooled)
  - Gas stove (2 burners and oven)
  - Electric remote switch for gas valve
- Forward cabin with V-shaped double berth, locker and storage compartments, coachhouse windows and deck hatch
- Aft cabin to port with double berth, locker, storage compartments, two coachhouse windows and three portholes to cockpit
- Heads compartment to starboard aft with sink, electric toilet and shower
- Carpet throughout the interior
- Exclusive, beautifully finished interior in satin-varnished Khaya mahogany
- LED interior lighting (with dimmer in the saloon)
- Additional swedish bed mattresses (toppers) on all berths

## Technical Equipment

- VOLVO PENTA D1-30 3-cylinder inboard diesel 30 hp/22 KW
- Engine hours (as of July 2024): 1.433 h
- Stainless steel diesel tank approx. 165 litres
- Saildrive with 3-bladed folding propeller VOLVO PENTA
- Bow thruster SLEIPNER/Side Power 4 hp
- Separate 12 V/225 Ah battery (new 2020) for bow thruster and electric anchor windlass
- 230 V shore power with charging cable
- 230 V and 12 V sockets in interior
- Battery charger PHILIPPI ACE 12 V/40 A (new 2020)
- Service battery 12 V/225 Ah (new 2020)
- Starter battery 12 V/70 Ah (new 2020)
- Battery monitor PHILIPPI
- Alternator 12 V/115 A
- Solar panel 44 W on coachhouse roof
- LED navigation lights
- Diesel heating WEBASTO Airtop Evo 3900
- Stainless steel water tank approx. 265 l
- Hot water boiler 40 l
- Electric toilet
- Stainless steel holding tank approx. 50 l with deck connection and sea discharge

## Navigation/Electronics

- Instruments above companionway:
  - FURUNO FI50 log and depth sounder
  - FURUNO FI50 Multi
  - FURUNO FI50 Wind
  - Compass
- GPS/chartplotter RAYMARINE e95 behind windscreen
- GPS/chartplotter RAYMARINE a65 on chart table
- FURUNO RD-33 display on chart table
- Autopilot FURUNO NavPilot 711
- VHF-radio RAYMARINE Ray55E at chart table
- AIS Class B-transponder GARMIN AIS 600
- Radio/CD/DVD/USB-player PIONEER with speakers in saloon and cockpit
- TV screen GRUNDIG in saloon to starboard with mast antenna
- WEMPE clock and thermometer/hygrometer

## Safety

- Electric and manual bilge pump
- Horseshoe
- Lifesling
- Jackstays on deck
- Fire extinguisher
- Alarm system

## Accessories

- Additional anchor with bracket on pushpit
- Fenders
- Mooring lines

### Brokerage Liability Disclaimer

All information especially regarding the VAT-status of a yacht has been supplied by third parties. It is non-binding and without guarantee, subject to error and alteration. Our brokerage relies exclusively on information supplied by the vendor carefully compiled and checked by us to the best of our knowledge. Hence, a liability for correctness and completeness of provided information cannot be assumed.



# IMAGES





# IMAGES



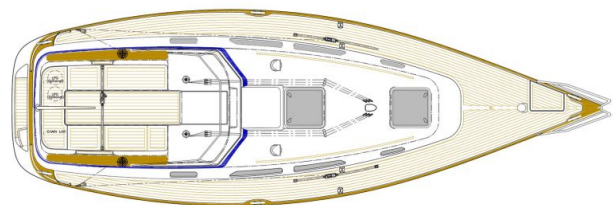


# IMAGES

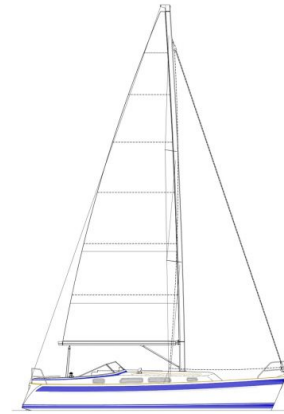
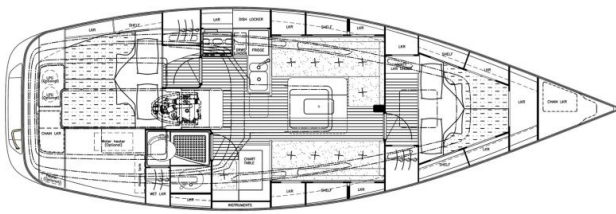




# IMAGES



# IMAGES



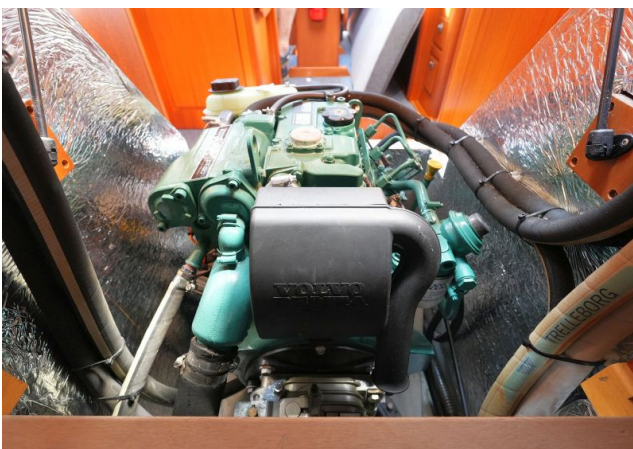


# IMAGES





# IMAGES





# IMAGES

