



CNB 76

Year 2017



DIAMOND Yachts, Yachtzentrum Baltic Bay
Börn 17 | 24235 Laboe

CNB 76



Boat sold.

Main Info

Model	CNB 76
Manufacturer	Construction Navale Bordeaux
Designer	Philippe Briand
Category	Performance cruiser
Year	2017
Location	Südfrankreich
Flag	je
VAT status	excl. VAT
Material	GRP
Rig	Sloop with carbon mast
Cabins	4
Berths	8

Dimensions & Material

LOA	23.17 m
LWL	21.98 m
Beam	6.10 m
Draft	3.00 m
Displacement	50 t
Sail area	304 m ²
Engine	VOLVO PENTA D4-180
Power	180 PS/132 KW
Drive	Shaft with folding propeller
Fresh water	1.500 L
Fuel	2.500 L
Holding tank	200 L

Key Facts

- HALL-Spars carbon fibre mast.
- Carbon Park Avenue-boom.
- Airconditioning.
- Watermaker.
- Diesel generator 17 KW (new 2023).
- Bowthruster and sternthruster.
- Lithium service battery bank.
- WILLIAMS Jet Tender 385.

Description

Luxurious, spacious cruiser built by CNB/Construction Navale Bordeaux in France. Modern, elegant design by Philippe Briand with wide stern, chines, two rudder blades and vertical bow. The deck saloon ends behind the mast and the foredeck is completely flush. This gives the CNB 76 her sleek profile and elegant appearance. With a large, longitudinal tender garage, the fantastic, bright decksaloon, a clever four-cabin layout with owner's cabin forward and the spacious asymmetrical cockpit the CNB 76 was the first model of the yard to enter the segment of serial production super yachts. Very clever arrangement of the galley and crew area in the stern with direct cockpit-access, which leaves the owner and his guests completely undisturbed and detached from the functional areas on board. Extensively equipped yacht built in 2017. A special feature of this CNB 76 is the HALL-Spars carbon fibre mast with carbon fibre Park Avenue boom. "Mauka Ambiance" interior in tinted oak with floorboards in bleached oak (interior design by Jean-Marc Piaton) and optional crew cabin in the bow. The equipment list leaves nothing to be desired: Hydraulic headsail furling systems, electric winches, Kohler diesel generator 17 KW (new 2023), air conditioning, watermaker 280 l/h, two inverters, extensive NORTH-Sails 3Di sail wardrobe new in 2021, retractable bow and stern thruster, etc. Numerous toys such as a WILLIAMS Jet Tender 385, another dinghy with electric outboard engine, two Seabobs, a fliteboard, ...

Rig/Sails

- Deck-stepped, 9/10 fractional, clear coated carbon fibre mast by HALL-Spars
- Three sets of aft-swept spreader
- Standing rigging in rod
- Clear coated carbon fibre Park Avenue boom by HALL-Spars with hydraulic outhaul
- Hydraulic RECKMANN genoa furling system
- Fixed cutter stay with hydraulic RECKMANN furling system
- Additional navigation lights on spreaders
- Complete mast check (incl. disassembly of rig in 2023)
- Central electro-hydraulic panel for backstay, boom vang and halyard tensioners
- Integrated track with traveller for self-tacking jib
- Full-batten mainsail NORTH-Sails 3Di Ocean approx. 172 m² with three reefs (new 2020)
- HARKEN cars for mainsail
- Boom cover
- Furling genoa NORTH-Sails 3Di Ocean approx. 152 m² (new 2021) with UV protection
- Self-tacking jib for cutter stay NORTH-Sails 3Di Ocean approx. 82 m² (new 2021) with UV protection
- Code-5 INCIDENCES Stormlite approx. 350 m² (new 2019)
- Hydraulic furling system for code sails
- Gennaker gear incl. gennaker halyard, spinnaker halyard and 2:1 code-0 halyard
- Storm jib for cutter stay INCIDENCES approx. 25 m²

Deck

- Teak deck with grey caulking on foredeck, running decks, swim platform and in cockpit (refit of teak deck 2023)
- Electric anchor windlass with remote control in cockpit
- Mooring gear: DELTA-anchor 55 kg with 125 m anchor chain 14 mm
- Central mainsheet pod with electric 3-speed winch HARKEN 70.3STAE (3 gears) and central railing behind mainsheet winch
- Electric primary winches HARKEN 80.3STAE (3 gears)
- Electric secondary winches HARKEN 70.2STAE
- Electric halyard winch for main halyard at mast foot HARKEN 70.3STAE (3 gears) and electric halyard winch on port side HARKEN 70.2STAE (2 gears)
- 2 x manual halyard winches at mast foot HARKEN 70.2STA
- Two helm stations with steering wheels, helmsman's seats and large consoles for instruments and control units
- Wide hydraulic swim platform with remote control and swim ladder
- Large longitudinal tender garage (for a dinghy of up to 3,85 m) with electric winch and separate access via deck hatch in cockpit floor
- Electric compressor for dinghy and inflatable fenders
- Spacious lockers below aft deck to starboard and port
- Retractable Seasmart stainless steel mooring cleats and spring cleats (8 in total)
- Electric deck wash pump for sea and fresh water with connection in anchor locker and in cockpit
- Railing gates to starboard and port and side access ladder
- Retractable sprayhood (disappears completely under covers in coachhouse roof)
- Retractable bimini (disappears completely under covers in the coachhouse roof)
- Electric adjustable teak cockpit table (turns into a sun lounger)
- Cockpit refrigerator
- Cockpit shower hot/cold

Interior/Layout

- Bright, friendly interior "Mauka Ambiance" in tinted oak with open grain finish and floorboards in light-coloured bleached oak
- Extremely spacious deck saloon with raised saloon floor, panoramic windows in coachhouse, large hull windows and deck hatches
- U-shaped dinette at electric adjustable saloon table for 8 people to port
- Comfortable lounge to starboard with bar and longitudinal sofa that can be converted into two individual armchairs
- Salon upholstery in ivory (colour: "Pierre Frey Quest")
- Chart table with navigator's seat to starboard aft
- Large, functional U-shaped galley to starboard aft with direct access to cockpit with worktop incl. counter in white CORIAN
 - Stainless steel double sink
 - Extractor hood
 - MIELE refrigerator 231 l
 - Extra refrigerator 130 litres
 - MIELE freezer 104 l
 - MIELE dishwasher
 - Tempered wine cabinet
 - Gimbalbed electric MIELE four-burner induction hob and oven
- Luxurious owner's cabin forward with queen-size island double berth, dressing table and ample storage space in lockers, drawers and compartments
- Owner's heads compartment with separate shower, towel dryer and electric toilet TECMA Silent Plus
- VIP guest cabin to port with wide double berth (can be converted to single berths), locker and en-suite heads compartment with separate shower, towel dryer and electric toilet TECMA
- Starboard lateral cabin with bunk beds (the lower berth can be converted to a double berth), wardrobe and en-suite heads compartment with electric toilet TECMA
- Aft cabin to port with two single berths, locker and en-suite heads compartment with separate shower and electric toilet TECMA
- Crew cabin in sail locker with two bunk berths, locker, WC and sink
- Carpet in saloon and owner's cabin
- Leecloths below all berths
- OCEANAIR blinds and mosquito screens in deck hatches and blinds for hull windows

Technical equipment

- VOLVO PENTA D4-180 4-cylinder common-rail turbo diesel 180 hp/132 KW
- Shaft drive with 4-blade folding propeller VARIOFOLD and line cutter
- EVC system with electronic throttles at both helm stations
- Alternator 24 V/80 A
- Two aluminium diesel tanks (total capacity: approx. 2.500 l)
- Retractable bowthruster SIDEPOWER with separate battery
- Retractable sternthruster SIDEPOWER with separate battery
- 4 x lithium ion service battery MASTERVOLT MLI Ultra 24/5000 (4 x 24 V/180 Ah)
- Starter battery 12 V
- Diesel generator KOHLER 17 KW (new 2023) with separate starter battery 12 V
- 230 V shore power connection with charging cable
- 2 x battery charger MASTERVOLT Charge Master 24 V/100 A
- 2 x inverter MASTERVOLT Mass Sine Ultra 24 V/230 V/4.000 W
- 230 V and 12 V sockets in the interior
- Air conditioning DOMETIC 72.000 BTU for saloon, cabins and crew cabin in forepeak
- Watermaker Sea Recovery Aquamatic 230 V/280 l/h
- Washer-dryer MIELE Marine 230 V/5 kg
- Two stainless steel fresh water tanks (total capacity: approx. 1.500 l)
- Fresh water shore connection
- Fresh water filter
- Hot water boiler 100 l
- 4 x electric toilet TECMA with fresh water flushing
- 2 x holding tank approx. 100 l
- LED navigation lights

Navigation/Electronics

- Instruments: 2 x RAYMARINE i70 multi display with transducers for log, echo sounder and wind
- 3 x RAYMARINE a75 maxi display in carbon fibre bracket on mast
- 2 x steering compass
- Autopilot RAYMARINE with 3 x control unit p70
- Radio remote control RAYMARINE Smartcontrol
- Chartplotter RAYMARINE gS165 at chart table
- Chartplotter RAYMARINE eS9 at both helm stations
- Radar antenna RAYMARINE QUANTUM 4 KW HD (painted black) on mast
- AIS Class B-transponder RAYMARINE AIS650
- VHF-radio RAYMARINE Ray240E dual
- Satellite telephone KVH Trac-Phone V3 HTS with black painted antenna on mast
- VOLVO PENTA interface for displaying engine data on chart plotter
- Navtex system with antenna in mast top
- TV Flat screen 40" in saloon
- TV Flat screen 32" in owner's cabin
- Apple TV
- BOSE audio system with loudspeakers in saloon and cockpit speakers

Safety

- 2 x life raft Oceansafety SOLAS A
- JONBUOY rescue module on pushpit
- EPIRB
- Distress signal kit
- Various safety equipment
- Fire extinguishing system (MCA certified) in engine compartment
- Fire extinguisher
- Electric and manual bilge pumps
- Watertight bulkhead in forward section
- Active radar reflector ECHOMAX

Accessories

- WILLIAMS Jet Tender 385
- Second Tender TALAMEX HXL 275 with TORQEEDO Travel 1003 Electric outboard engine
- 2 x SEABOB F5s underwater scooter
- eFoil Fliteboard Series 2.2
- Sailing dinghy Tiwal 3 (in cradle on foredeck)
- Folding carbon fibre gangway 3.20 m
- Cockpit cushions
- Sunbed cushions for coachhouse roof
- Canvas covers for steering wheels, consoles, winches and cockpit table
- Tool kit
- Various spare parts
- Inflatable fenders FENDERQUIP
- Mooring lines

Brokerage Liability Disclaimer

All information especially regarding the VAT-status of a yacht has been supplied by third parties. It is non-binding and without guarantee, subject to error and alteration. Our brokerage relies exclusively on information supplied by the vendor carefully compiled and checked by us to the best of our knowledge. Hence, a liability for correctness and completeness of provided information cannot be assumed.

IMAGES



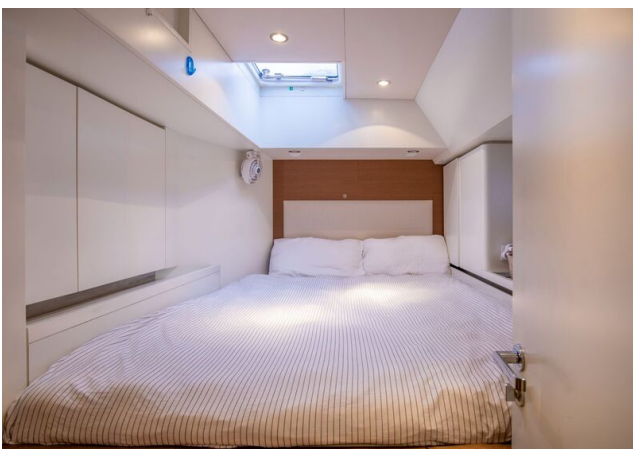
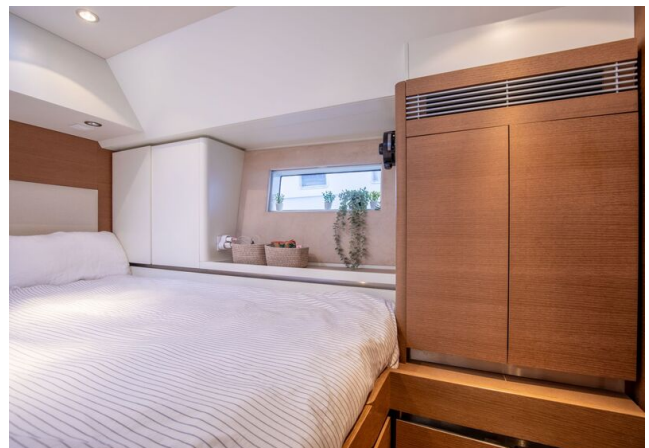
IMAGES



IMAGES



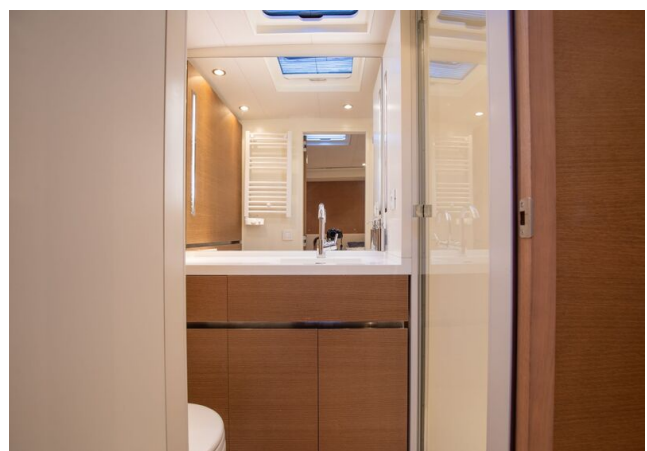
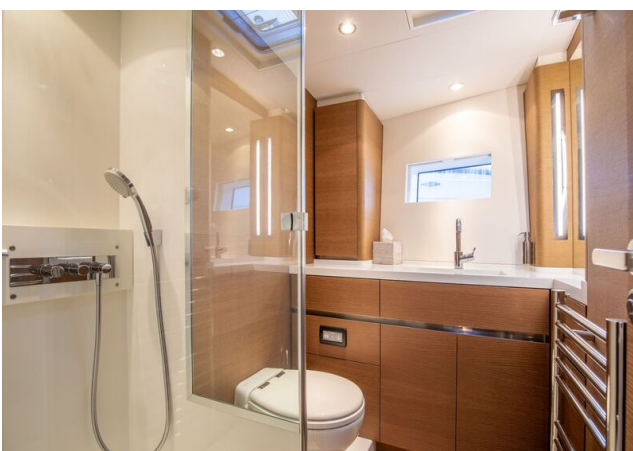
IMAGES



IMAGES



IMAGES



IMAGES

