



BORDEAUX 60

Year 2012



DIAMOND Yachts, Yachtzentrum Baltic Bay
Börn 17 | 24235 Laboe

BORDEAUX 60



Boat sold.

Main Info

Model	Bordeaux 60
Manufacturer	Construction Navale Bordeaux
Designer	Philippe Briand
Category	Performance cruiser
Year	2012
Location	Südfrankreich
Flag	France
VAT status	excl. VAT
Material	GRP
Rig	Sloop
Cabins	3
Berths	8

Dimensions & Material

LOA	18.38 m
LWL	16.28 m
Beam	5.18 m
Draft	2.45 m
Displacement	27 t
Sail area	176 m ²
Engine	VOLVO PENTA D4-180
Power	180 PS/132 KW
Drive	Shaft with folding propeller
Fresh water	1.000 L
Fuel	1.000 L
Holding tank	240 L

Key Facts

- Bordeaux 60 with carbon V-boom.
- Diesel generator 11 KW.
- Four electric winches.
- Air conditioning.
- Shallow draft keel approx. 2,45 m.
- Crew cabin in forepeak.
- Watermaker.
- Grey hull.

Description

The Bordeaux 60 was the first semi custom-project of the French one off-specialist CNB (Construction Navale Bordeaux). Her modern lines, the clever interior layout and the concept of transferring CNB's super yacht know-how to a 60' production yacht made the Bordeaux 60 an unparalleled success. Her sleek and elegant lines with slightly raised decksaloon give her a spectacular appearance at sea or in harbour. The spacious, luxurious and bright interior offers all the volume and comfort you need for long passages and extended vacations on board. Very young, luxuriously equipped, firsthand owner's yacht. Thanks to her ergonomic cockpit layout and four electric winches the yacht can practically be sailed one-handed. Hull in light grey gelcoat with white decoration. Comprehensive specification including diesel generator 11 KW, airconditioning, watermaker, satellite TV, satellite phone etc. L-shaped shallow draft keel in lead (draft: approx. 2,45 m). 3 cabin layout with three heads compartments, master cabin forward with lateral owner's berth and crew cabin in forepeak with two bunks, shower, toilet and separate air condition.

Rigg/Sails

- Keel stepped, 9/10 fractional aluminum mast
- Three sets of aft swept spreaders
- Rig painted white
- Carbon V-boom by HALL-Spars
- Fixed cutter stay with furler
- Spreader lights
- Self tacking track on deck
- Hydraulic boom vang and backstay with central NAVTEC hydraulic panel in cockpit
- Full batten mainsail NORTH-Sails triradial approx. 95 m²
- Lazy jacks and boom cover
- Furling genoa 108 % NORTH-Sails triradial approx. 85 m² with UV-protection
- Self-tacking jib for staysail NORTH-Sails approx. 44 m² with UV-protection
- Gennaker NORTH-Sails approx. 260 m² with snuffer
- Gennaker gear

Deck

- Teak deck with grey caulking on running decks, coachhouse roof and in cockpit
- 2 electric genoa winches Harken 70.2STEA
- 2 electric maneuvering winches HARKEN 60.2STEA
- Tender garage in stern
- Electro-hydraulic folding swim platform with remote control
- Two helm stations with large consoles for instruments and custom TCE steering wheels in teak and carbon
- Electric anchor windlass LEWMAR 2.000 W with chain counter and remote control in cockpit
- DELTA-anchor 40 kg and 100 m anchor chain 12 mm
- Electric deckwash pump on foredeck
- Sprayhood and bimini with link cloth
- Teak cockpit table with integrated electric coolbox
- Teak seats in pushpit
- Railing gates to starboard and port
- 4 spring cleats amidships
- Swim ladder
- Cockpit shower hot/cold
- LED courtesy lights in cockpit
- Crane for outboard engine at pushpit

Layout/Interior

- Bordeaux 60 in 3 cabin layout
- Spacious, bright saloon with large front and side windows
- U-shaped dinette around electric lowering saloon table to port (table can be converted into double berth)
- Longitudinal sofa and forward facing chart table to starboard
- Saloon upholstery in Alcantara
- The galley is arranged over the entire beam of the yacht in front of the saloon
 - Worktop in CORIAN
 - Double sink
 - Electric stove (4 burners/oven/grill)
 - Microwave
 - 2 refrigerators
 - Freezer
 - Icemaker
 - Dishwasher
 - Washing machine
 - Espresso machine
- Owner's cabin forward with lateral double berth to port
- En-suite owner's heads with separate shower and electric toilet
- Two symmetrical aft cabins with double berth and locker
- Aft heads compartments with separate shower, electric toilet and towel dryer
- Forepeak with two bunks, shower, toilet and separate air condition
- Carpet in saloon and owner's cabin

Technical Equipment

- VOLVO PENTA D4-180 4 cylinder inboard diesel 180 hp/132 kw
- 2 aluminum fuel tanks (total capacity: 1.000 l)
- 3 bladed folding propeller GORI with overdrive
- Rope cutter on propeller shaft
- Bowthruster 20 hp
- Diesel generator ONAN 11 kw with starter battery 12 V/50 Ah
- 230 V shore power connection
- Gel service battery bank (capacity: 24 V/700 Ah)
- 2 battery chargers 24 V/60 A
- Starter battery 12 V/50 Ah
- Battery for bowthruster and anchor windlass 24 V/75 Ah
- Airconditioning WEBASTO 60.000 BTU
- LED navigation lights
- Watermaker Sea Recovery
- 2 x stainless steel water tank (total capacity: 1.000 l)
- Electric toilets with holding tank 80 l in all heads
- Safe

Navigation/Electronics

- 3 x RAYMARINE multi-display in consoles on steering pedestals
- 3 x RAYMARINE multi-display in bracket on mast
- Autopilot RAYMARINE with gyro-sensor
- GPS/chartplotter RAYMARINE E120 at chart table
- 2nd plotter display e120w in console at cockpit table
- AIS-transponder RAYMARINE AIS650
- Radar antenna RAYMARINE 4 kw with stainless steel protection on first spreader
- Compass
- VHF RAYMARINE Ray240E dual
- IRIDIUM handheld satellite phone including docking station and external antenna
- Radio/CD-/DVD-player with BOSE sound system and cockpit speakers
- TV 26" with LG HI-FI/DVD Home Cinema system in saloon
- TV 22" in owner's cabin
- Satellite TV-antenna on first spreader

Safety

- 2 x liferaft 4 pers.
- 2 x electric bilge pump
- 4 fire extinguishers
- Fire extinguishing system in engine compartment

Accessories

- Carbon gangway
- Cockpit cushions
- Sun bathing mattress on coach roof
- Canvas covers for steering wheels and consoles, winches and cockpit table
- Fenders
- Mooring lines

Brokerage Liability Disclaimer

All information especially regarding the VAT-status of a yacht has been supplied by third parties. It is non-binding and without guarantee, subject to error and alteration. Our brokerage relies exclusively on information supplied by the vendor carefully compiled and checked by us to the best of our knowledge. Hence, a liability for correctness and completeness of provided information cannot be assumed.

IMAGES



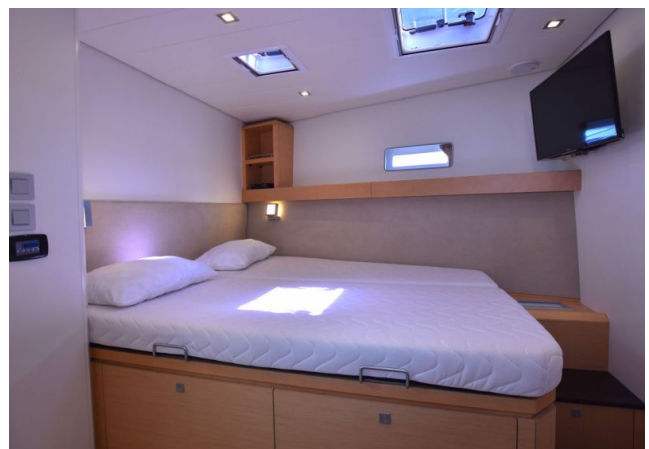
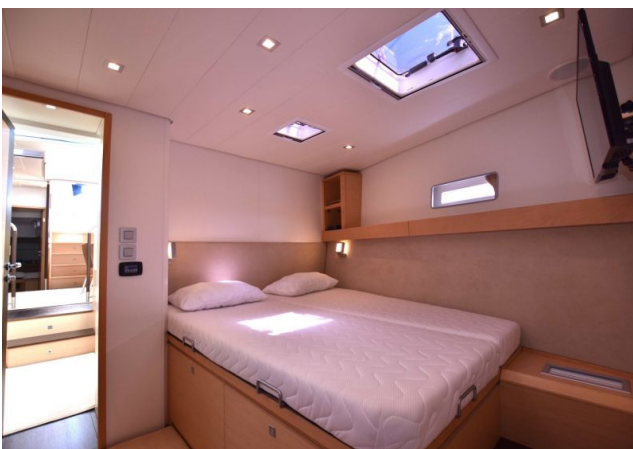
IMAGES



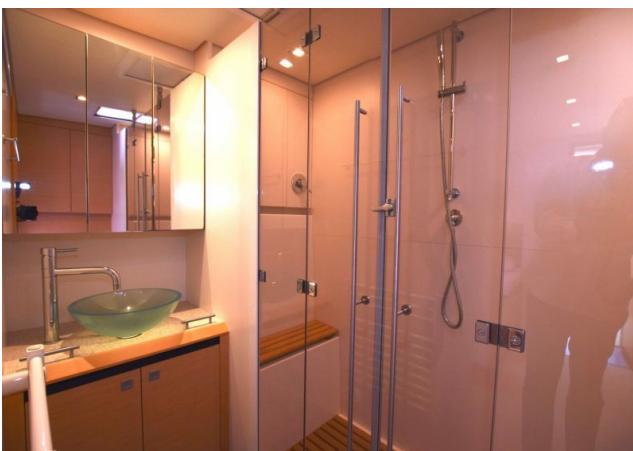
IMAGES



IMAGES



IMAGES



IMAGES

