



# AMEL 55

Year 2012



DIAMOND Yachts, Yachtzentrum Baltic Bay  
Börn 17 | 24235 Laboe

# AMEL 55



**Boat sold.**

## Main Info

<b>Model</b>	AMEL 55
<b>Manufacturer</b>	Chantiers AMEL S.A. (FRA)
<b>Designer</b>	AMEL Design Group
<b>Category</b>	Bluewater cruiser
<b>Year</b>	2012
<b>Location</b>	Mallorca/Spanien
<b>Flag</b>	de
<b>VAT status</b>	EU-VAT paid
<b>Material</b>	GRP
<b>Rig</b>	Ketch
<b>Cabins</b>	3
<b>Berths</b>	7

## Dimensions & Material

<b>LOA</b>	17.30 m
<b>LWL</b>	14.85 m
<b>Beam</b>	4.99 m
<b>Draft</b>	2.20 m
<b>Displacement</b>	24.0 t
<b>Sail area</b>	151.0 m <sup>2</sup>
<b>Engine</b>	STEYR M14TCAM 144
<b>Power</b>	140 PS / 103 KW
<b>Drive</b>	AMEL angle drive
<b>Fresh water</b>	800 L
<b>Fuel</b>	900 L
<b>Holding tank</b>	150 L

## Key Facts

- Fully equipped bluewater cruiser.
- 3 cabin layout with forward owner's cabin.
- Diesel generator and air conditioning.
- Electric mainsail furler.
- Fixed doghouse.
- Hydraulic gangway.

## Description

Luxurious and seaworthy bluewater cruiser from France fully equipped for circumnavigation. Her proven concept, the high standard of boatbuilding in the shipyard and the focus on safety, reliability and comfort make AMEL sailing yachts legendary boats for long distance sailing and you meet them in the most remote regions of the world. Very rigid, torsion-free construction using epoxy resins with laminated bulkheads. Well equipped, hardly used, firsthand owner's yacht delivered in 2012. 3 cabin-version with forward owner's stateroom, two aft cabins and two heads. Deep, well protected cockpit with fixed windscreen and doghouse covering the helm station. All sheets and trimlines can be operated from the cockpit. Interior in american walnut and floorboards in oak laminate. Very comprehensive specification including diesel generator, electric mainsail furler, hydraulic gangway, electric davits, complete sail wardrobe etc. She is ready to sail and is offered including all inventory.

## Rig/Sails

- Ketch-rig
- Deck stepped, 9/10 fractional AMEL mast with two sets of aft swept spreaders
- Electric mainsail furler
- Deck stepped, top rigged AMEL furling mizzen mast with one set of aft swept spreaders
- Both masts are painted white
- Electric RECKMANN genoa furler
- Cutter stay with electric RECKMANN furling system
- Carbon fibre spinnaker pole
- LED 3 color light and anchor light in mast top
- Furling mainsail INCIDENCES Hydranet triradial approx. 47 m<sup>2</sup>
- Furling mizzen INCIDENCES Hydranet triradial approx. 29 m<sup>2</sup>
- Furling genoa INCIDENCES Hydranet triradial approx. 75 m<sup>2</sup> with UV-protection
- Cutter jib INCIDENCES Hydranet triradial approx. 22 m<sup>2</sup> with UV-protection
- Asymmetric spinnaker INCIDENCES in snuffer
- Code-0 NORTH-Sails on furler

## Deck

- Solid stainless steel bow fitting designed for double mooring gear
- Electric windlass with remote control in cockpit
- Stainless steel anchor 30 kg and 100 m anchor chain 10 mm
- Second electric anchor windlass
- Electric deckwash pump
- Continuous solid guard rail in stainless steel tube with railing gates
- 4 stainless steel mooring cleats
- 4 stainless steel spring cleats
- Electric Harken genoa winches
- Electric Harken winches for cutter jib
- Electrical HARKEN winch for main sheet
- Large sail locker forward with storage space for fenders, mooring lines and sails
- Spacious locker below port side deck
- Storage space for tender below aft deck
- Doghouse with fixed windscreen (opening central window and two opening hatches in roof) and windscreen wipers
- Electric stainless steel davits
- Retractable bimini
- Hydraulic gangway
- Folding cockpit table
- Integrated teak seats in pushpit
- Swim ladder

## Layout/Interior

- Spacious salon with U-shaped dinette to port around saloon table
- Longitudinal sofa to starboard
- U-shaped galley to port aft
- Corian worktop
- Double sink
- Gas stove (3 burners and oven)
- Electric extraction hood
- Microwave oven 230 V
- Refrigerator 150 l
- Freezer 150 l
- Dishwasher
- Forward facing charttable to starboard aft
- Forward owner's cabin with queensize central island berth, plenty of storage space in lockers, drawers and shelves
- En-suite owner's heads with separate shower to port
- Starboard aft cabin with double berth, locker and vanity table
- Port aft cabin with two single berths, locker and vanity table
- Aft heads compartment with separate shower
- Seaberth to starboard in passageway to aft cabin
- Bed slats
- OCEANAIR blinds and mosquito screens

## Technical Equipment

- STEYR M14TCAM M0144M36 4 cylinder inboard diesel 140 hp/103 kw with electronic throttle
- Double diesel filters with 3-way valve
- Hydraulic transmission with shaft brake
- AMEL angle transmission system
- Folding propeller
- Large, easily accessible and sound-insulated engine room
- Retractable bow thruster 11 hp
- Diesel generator ONAN 11 kw
- 230 V shore power connection with battery charger MASTERVOLT 24 V/100 A
- Second battery charger MASTERVOLT 24 V/60 A
- Inverter 24 V/230 V/800 W
- 24 V service battery bank with a total capacity of 600 Ah
- Starter batteries 12 V for main engine and generator
- 12 V/24 V/230 V sockets
- Air conditioning for the entire yacht
- Washer/dryer LG
- Watermaker DESSALATOR 230 V 240 l/h,
- Two electric toilets with holding tank
- Hot water heater ISOTEMP 50 l
- LED interior lighting
- Dimmer for saloon lights
- Safe

## Navigation/Electronics

- BROOKS [&] GATEHOUSE H3000 system
- B[&]G GFD display at helm station and GFD display at chart table
- B[&]G 360° wind direction display
- B[&]G VMG/Close hauled
- Autopilot FURUNO Navpilot
- GPS/chartplotter FURUNO Navnet 3D 12" at charttable with second display in cockpit
- Radar antenna FURUNO FR1835
- GPS-receiver FURUNO GP-150
- Compass
- AIS-transponder FURUNO FA50 with HUB 101
- VHF FURUNO at charttable with second unit in cockpit
- Radio/CD/MP3-player with BOSE sound system in saloon and cockpit speakers

## Safety

- Liferaft ZODIAC 8 pers. in quick release bracket at pushpit
- Johnbuoy rescue module at pushpit
- EPIRP
- Distress flare kit
- Lifejackets with lifebelts
- Fire extinguishers
- Electric and manual bilge pump

## Accessories

- Cockpit cushions
- Sunbathing mattress for aft deck
- Dinghy AB RIB with outboard engine YAMAHA 15 hp
- Fenders
- Mooring lines
- Bed linen by Victoria Yachting
- Pots, pans, crockery and cutlery

### Brokerage Liability Disclaimer

All information especially regarding the VAT-status of a yacht has been supplied by third parties. It is non-binding and without guarantee, subject to error and alteration. Our brokerage relies exclusively on information supplied by the vendor carefully compiled and checked by us to the best of our knowledge. Hence, a liability for correctness and completeness of provided information cannot be assumed.

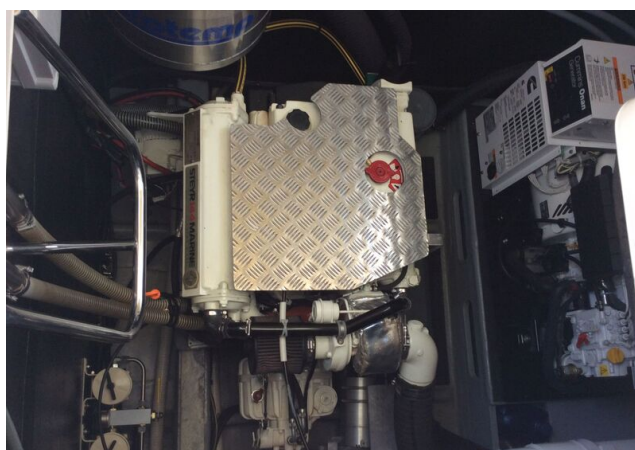
## IMAGES



## IMAGES



## IMAGES



## IMAGES

