



# RHEA TRAWLER 36 SEDAN

Year 2014



DIAMOND

DIAMOND Yachts, Yachtzentrum Baltic Bay  
Börn 17 | 24235 Laboe

# RHEA TRAWLER 36 SEDAN



**Boat sold.**

## Main Info

<b>Model</b>	RHEA Trawler 36 Sedan
<b>Manufacturer</b>	RHEA-Marine (FRA)
<b>Designer</b>	Mortain-Mavrikios-Chabaud
<b>Category</b>	Trawler
<b>Year</b>	2014
<b>Location</b>	La Rochelle/Atlantik
<b>Flag</b>	Austria
<b>VAT status</b>	EU-VAT paid
<b>Material</b>	GRP
<b>Cabins</b>	2
<b>Berths</b>	4

## Dimensions & Material

<b>LOA</b>	11.30 m
<b>LWL</b>	10.80 m
<b>Beam</b>	4.10 m
<b>Draft</b>	1.00 m
<b>Displacement</b>	11 t
<b>Engine</b>	2 x VOLVO PENTA D4-260
<b>Power</b>	2 x 260 PS/2 x 191 KW
<b>Drive</b>	Shaft drive
<b>Fresh water</b>	500 L
<b>Fuel</b>	1.100 L
<b>Holding tank</b>	50 L

## Key Facts

- Excellent performance in rough conditions.
- Engine-upgrade 2 x VOLVO 260 hp.
- Grey hull with decoration in ivory.
- Classic square lines.
- Hardly used (only approx. 230 engine hours).
- TV with satellite antenna.
- Interior in light oak.
- Bowthruster.

## Description

Stable, seaworthy trawler in Sedan-version by the French quality brand RHEA Marine. The RHEA Trawler 36 Sedan has a modern hull design with a very sharp bow, large propeller tunnels and a wide aft section. She offers the trawler-typical performance in rough weather, but also achieves top speeds exceeding 25 knots in the version with 2 x VOLVO PENTA D4-260. Wide, unobstructed running decks, her stable position in the water and the protected cockpit make the RHEA 36 a safe multi purpose vessel for all weather conditions. Classic and square lines give her a characteristic appearance. The cosy saloon, a spacious owner's cabin with island double berth forward and another double cabin to starboard amidships provide ample comfort and living space for a crew of up to four persons. This RHEA 36 is a hardly used, well maintained first-hand owner's yacht built in 2014 (only approx. 230 engine hours). Bright interior in oak and teak deck on saloon floor. Extensive specification including bow thruster, engine upgrade, TV with satellite antenna, large electric sunroof in saloon, wide, electric folding swim platform, diesel heating, dinghy with outboard engine etc. Hull in grey with ivory stripes.

## Deck

- Electric anchor windlass 1.000 W
- Mooring gear: Plow-anchor 20 kg with 30 m anchor chain 10 mm
- Wide, electric folding swim platform
- Large electric sunroof in saloon ceiling
- Mast for antennas, navigation lights and flag
- Cockpit enclosure (sides and rear panels)
- Folding seats in cockpit sides
- Spacious locker in cockpit floor
- Side exit doors
- Stainless steel delphinière (bowsprit for mooring gear)
- Stainless steel pulpit
- Spring cleats
- Rubbing strake on hull sides
- Swim ladder
- Stern shower

## Interior/Layout

- Bright and cosy saloon with L-shaped sofa at saloon table to starboard and longitudinal sofa to port
- Saloon cushion in red Alcantara
- L-shaped galley to starboard aft
  - Worktop in white Corian
  - Double sink
  - Gas stove (2 burners and oven)
  - Electric fridge
- Helm station with pilot seat to port forward
- Passenger bench to starboard can be folded down towards dinette
- Sliding doors to starboard and port
- Teak deck on saloon floor
- Venetian blinds for side windows and solar screens for windscreen
- Owner's cabin forward with wide island double berth and ample storage space in lockers, shelves and drawers
- Guest cabin to starboard with bunk beds
- Heads compartment with separate shower to port
- Light oak interior

### Technical equipment

- 2 x VOLVO PENTA D4-260 4 cylinder Commonrail inboard diesel 260 hp/191 KW
- Engine hours: 226 h on both engines in July 2019
- Electronic Vessel Control (EVC) with electronic throttle
- Shaft drives with 4 bladed propellers
- Line cutter on propeller shafts
- Bow thruster SIDEPOWER
- Diesel heater EBERSPÄCHER 4.000 W
- Holding tank approx. 50 l
- 230 V shore power connection with 230 V sockets in interior
- Battery charger 12 V/50 A
- Two starter batteries 12 V/105 Ah
- Two service batteries 12 V/105 Ah

### Navigation/Electronics

- GPS/chart plotter SIMRAD NSS12 12"
- Log and echo sounder
- VHF-Radio SIMRAD RS10 DSC
- Autopilot SIMRAD AP24
- Compass
- Radio/CD/MP3-player with two speakers in saloon
- Radio/CD/MP3-player with two speakers in owner's cabin
- TV screen 24" with electric lift and DVD-player in saloon forward to starboard
- HDTV satellite antenna Oyster Sat-Dom 50 M-GS

### Safety

- Manual and electric bilge pumps
- Fire extinguisher

### Accessories

---

- Sunlounging mattress on foredeck
- Cushions for bench on foredeck
- Dinghy (inflatable with 4-stroke outboard engine HONDA 5 hp)
- Fenders
- Mooring lines

---

#### Brokerage Liability Disclaimer

All information especially regarding the VAT-status of a yacht has been supplied by third parties. It is non-binding and without guarantee, subject to error and alteration. Our brokerage relies exclusively on information supplied by the vendor carefully compiled and checked by us to the best of our knowledge. Hence, a liability for correctness and completeness of provided information cannot be assumed.



## IMAGES



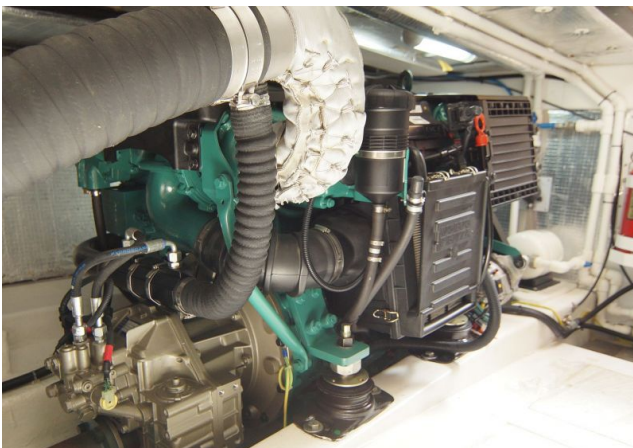


## IMAGES





## IMAGES





## IMAGES



## IMAGES

