



NAJAD 511

Year 2005



DIAMOND Yachts, Yachtzentrum Baltic Bay
Börn 17 | 24235 Laboe

NAJAD 511



Boat sold.

Main Info

Model	NAJAD 511
Manufacturer	Najadvarvet AB (SWE)
Designer	judel/vrolijk & co.
Category	Centercockpit-cruiser
Year	2005
Location	IJsselmeer/Niederlande
Flag	Sweden
VAT status	EU-VAT paid
Material	GRP
Rig	Sloop with furling mast
Cabins	2
Berths	5

Dimensions & Material

LOA	15.50 m
LWL	13.40 m
Beam	4.50 m
Draft	2.40 m
Displacement	19 t
Sail area	129 m ²
Engine	YANMAR 4JH3-HTE
Power	96 PS/71 KW
Drive	Shaft with folding propeller
Fresh water	630 L
Fuel	615 L
Holding tank	180 L

Key Facts

- NAJAD 511 in 2 cabin layout.
- Diesel generator and inverter.
- Removable cutter stay.
- Six electric winches.
- Airconditioning and diesel heating.
- European Yacht of the Year 2003.
- BESENZONI telescopic davits.
- Watermaker.

Description

Luxurious, seaworthy and fast centercock yacht built by the Swedish yard Najadvarvet AB on the island of Orust. The NAJAD 511 combines traditional, high-quality boat building with modern, efficient yacht design by the German dearchitect judel/vrolijk [&] co. Perfectly suited for long distance sailing in all conditions, the NAJAD 511 can be handled easily and safely by a small crew. The fixed windscreen and the secure, deep center cockpit provide excellent protection in uncomfortable conditions, and all sheets and trim lines are lead back onto the winch consoles at the helm station. Beautiful, elegant and sleek lines and exclusive, traditional mahogany interior. The NAJAD 511 was awarded the title "European Yacht of the Year 2003". This NAJAD is a second-hand owner's yacht, fully equipped for bluewater sailing. 2 cabin layout with luxurious owner's cabin aft over the entire beam of the yacht and spacious forward cabin with wide berth and ample storage space. Comprehensive specification incl. diesel generator, air conditioning, 2 x EBERSPÄCHER diesel heating, furling mast, removable cutter stay, six electric winches etc.

Rig/Sails

- Keel stepped, top-rigged SELDEN FURLING MAST (New 2009)
- Three SETS OF AFT swept SPREADERS
- Running rigging in Spectra
- FURLEX genoa furling system
- Removable cutter stay with Pelican quick tensioner (stowed on mast)
- Genoa tracks with cars adjustable from cockpit
- Sheeting tracks with adjustable cars for cutter jib on coach house
- ANDERSEN halyard winches on mast
- NAVTEC hydraulic panel in cockpit for hydraulic backstay adjuster and hydraulic boom vang
- Insulated backstay
- Furling mainsail D4 approx. 71 m²
- Furling genoa D4 approx. 79 m² with UV-protection
- Cutter jib D4 approx. 45 m²
- Trade sails Dacron
- 2 x carbon fiber spinnaker pole for trade sails

Deck

- Teakdeck on running decks, coachhouse roof, swim platform and in cockpit (new 2010)
- Electric anchor windlass LOFRANS 1.500 W below decks with remote control in cockpit
- Mooring gear: Stainless steel BRUCE anchor 30 kg with 60 m stainless steel anchor chain 10 mm
- Spacious, self-draining anchor locker
- Big sail locker below foredeck
- Electric genoa winches ANDERSEN 68.2STE
- Electric secondary winches ANDERSEN 52.2STE
- Electric mainsheet winches ANDERSEN 46.2STE
- High gloss varnished companionway and chart tables behind windscreen
- Fixed windscreen with stainless steel frame and handrails on the outside
- Spacious cockpit locker to starboard
- Teak bulwark as rubbing strake with stainless steel profile
- Sprayhood
- Cockpit cover (sprayhood extension)
- Cockpit bimini
- Railing gates to starboard and port
- Stainless steel mooring cleats and 4 x spring cleats
- BESENZONI telescopic davits
- Outboard crane Novalift on pushpit
- Teak outboard bracket on pushpit
- Integrated teak seats in pushpit
- 4 x stainless steel Dorade vents with stainless steel guard rail on coachhouse roof

Layout/Interior

- NAJAD 511 in 2 cabin layout
- Exclusive, beautifully finished mahogany interior
- Spacious, comfortable saloon with L-shaped sofa at folding saloon table to port forward
- Two single settees to starboard
- Saloon upholstery in white leather
- Large forward facing charttable direction of navigation with navigator seat so starboard aft
- Longitudinal galley to port in passage to aft cabin
- Worktop in white CORIA
- Double sink
- Gas stove (3 burners and oven)
- Large electric cool box approx. 92 l
- Deep freezer approx. 40 l
- Microwave 230 V
- Ample storage space in lockers, drawers and shelves
- Luxurious owner's cabin aft over the entire beam of the yacht island double berth and settee
- owner's heads with electric toilet
- Spacious forward cabin with wide double berth and lockers
- Forward heads compartment with electric toilet and separate shower
- OCEANAIR blinds and mosquito screens in deck hatches
- Red LED courtesy lights in saloon

Technical Equipment

- YANMAR 4JH3-HTE 4-cylinder turbodiesel 96 hp/71 KW
- Stainless steel shaft with flexible coupling and 3 bladed folding propeller GORI
- Stainless steel diesel tank approx. 615 l
- Double RACOR diesel filters
- Bowthruster SIDEPOWER 10 hp
- Diesel generator Fischer Panda 6 KW
- 230 V shore power connection with 230 V sockets below decks
- Combined battery charger/Inverter VICTRON 24 V/70 A/3.000 W
- 230 V isolating transformer
- AGM Service battery bank 24 V/460 Ah
- Battery controller DCC4000
- 2 x EBERSPÄCHER diesel heating with outlets in all cabins and heads
- Airconditioning CLIMA for saloon and both cabins
- Hot water boiler 40 l
- Watermaker ENWA 230 V 225 l/h (new 2010)
- 2 x electric toilets
- 2 x stainless steel holding tank with Y-valve, deck connection and sea discharge

Navigation/Electronics

- RAYMARINE ST290 Log
- ST290 Echo sounder
- ST290 Wind
- ST290 VMG/Close hauled
- 2 x ST290 Graphic display
- Compass
- Autopilot RAYMARINE ST7001 with control panel ST290
- Chartplotter RAYMARINE E120 in cockpit behind windscreen
- PC-screen as a slave for plotter at chart table
- Radar antenna RAYMARINE 2 KW on mast
- AIS transponder
- VHF radio SAILOR Dual
- ICOM IC-M710 MF/HF Marine Tranceiver
- Inmarsat Fleet Broadband 33 satellite system with antenna on mast at stern
- Radio/CD-player with speakers in saloon and cockpit
- SONY TV flatscreen with manual lift in saloon

Safety

- Lightning protection (shrouds and stays connected to keel bolts)
- Rescue buoy
- Lifesling
- Electric and manual bilge pump
- Signal horn on mast
- Electric remote switch for gas valve in galley
- Fire extinguisher

Accessories

- Dinghy (AVON RIB)
- Full winter cover
- Fenders
- Mooring lines

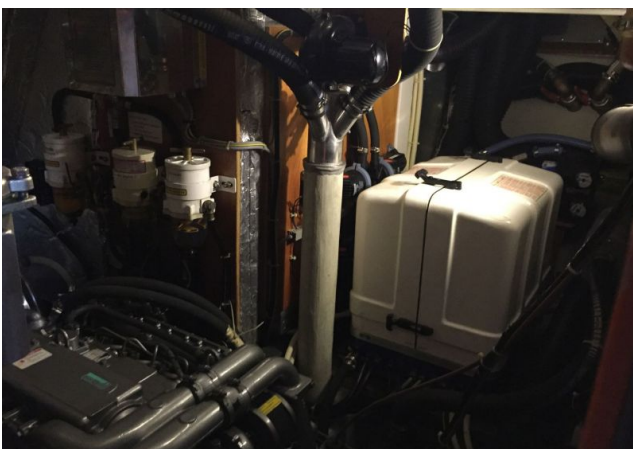
Brokerage Liability Disclaimer

All information especially regarding the VAT-status of a yacht has been supplied by third parties. It is non-binding and without guarantee, subject to error and alteration. Our brokerage relies exclusively on information supplied by the vendor carefully compiled and checked by us to the best of our knowledge. Hence, a liability for correctness and completeness of provided information cannot be assumed.

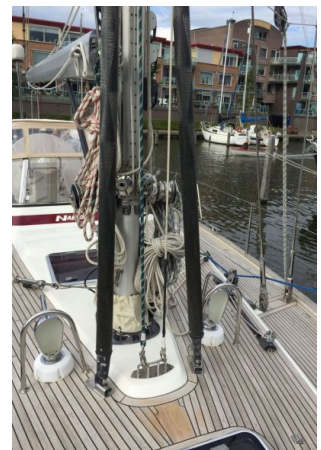
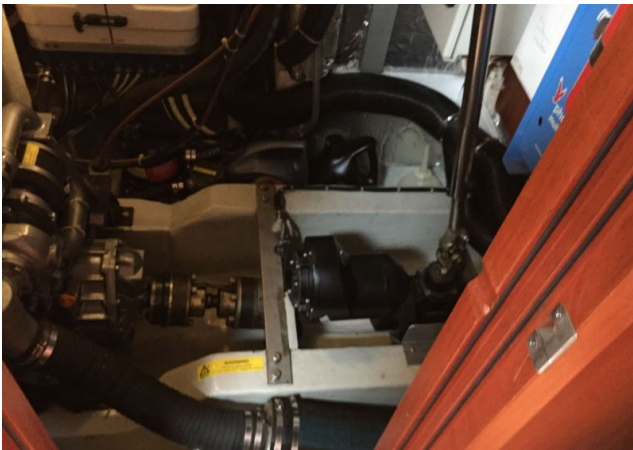
IMAGES



IMAGES



IMAGES



IMAGES

