



NAJAD 440AC

Year 2007



DIAMOND Yachts, Yachtzentrum Baltic Bay
Börn 17 | 24235 Laboe

NAJAD 440AC



Boat sold.

Main Info

Model	NAJAD 440ac
Manufacturer	Najadvarvet AB (SWE)
Designer	judel/vrolijk & co.
Category	Bluewater cruiser
Year	2007
Location	Ostsee
Flag	Germany
VAT status	EU-VAT paid
Material	GRP
Rig	Sloop
Cabins	2
Berths	4

Dimensions & Material

LOA	13.50 m
LWL	12.10 m
Beam	4.03 m
Draft	2.10 m
Displacement	14 t
Sail area	97 m ²
Engine	VOLVO PENTA D2-75
Power	75 PS/55 KW
Drive	Saildrive with folding propeller
Fresh water	525 L
Fuel	425 L
Holding tank	140 L

Key Facts

- Elegant, modern lines by judel/vrolijk & co.
- Spacious cockpit with two steering wheels.
- Modern, bright interior by Rhoades/Young.
- Hydraulic furling mast incl. hydraulic outhaul.
- Diesel generator and airconditioning.
- Electric winches and bow thruster.
- Hydraulic genoa furler.
- Custom 2 cabin layout.

Description

Modern, fast and very seaworthy bluewater yacht made by the quality yard NAJAD on the traditional boatbuilder's island of Orust. The NAJAD 440 ac (NAJAD 440 Aft Cockpit) was the first big aft cockpit yacht by the Swedish yard. The spacious cockpit with two steering wheels creates plenty of living space and offers a free passage to the swim platform. The NAJAD 440ac has everything you need for long distance sailing: Excellent performance thanks to Judel/Vrolijk [&] Co.-design, a stiff, rigid structure and a lot of living space and comfort both above and below decks. The NAJAD 440 marked the beginning of the cooperation between Najadvarvet and the British designer Rhoades/Young Interiors, who designed a modern, bright and timeless interior in mahogany with vinyl-covered panels. Well maintained, fully equipped first-hand owner's yacht (launched in 2008 and only 126 engine hours). 2 cabin layout with separate shower stall and large cockpit locker to starboard aft. Extensive specification including hydraulic inmast furling and hydraulic headsail furler, diesel generator, air conditioning, electric winches, bowthruster, dinghy etc.

Rigging/Sails

- Keel stepped, 9/10 fractional rigged SELDEN aluminum furling mast
- Three sets of aft swept spreaders
- Boom in aluminum with hydraulic cylinder for outhaul
- FURLEX hydraulic genoa furler
- Central HOLMATRO hydraulic panel in cockpit for hydraulic backstay and hydraulic vang
- Aluminum tubes for rigging screws
- 3-color light and anchor light in mast top
- Furling mainsail UK-SYVERSEN pentex triradial with vertical battens, approx. 52 m²
- Furling genoa UK-SYVERSEN pentex triradial approx. 60 m² with UV-protection
- Gennaker UK- SAILMAKERS approx. 130 m² with snuffer
- Gennaker gear

Deck

- Teak on running decks, coachhouse roof, swim platform and in cockpit
- Electric anchor windlass 1.500 W below decks
- Mooring gear: DELTA-anchor 25 kg and 60 m anchor chain 10 mm
- Stainless steel electric genoa winches ANDERSEN 58.2STE
- Secondary winches ANDERSEN 40.2ST
- Fixed windscreen with stainless steel frame and handrails on the outside
- Sprayhood
- Bimini
- Stainless steel pushpit with integrated teak seats
- Railing gates to starboard and portside
- Fixed cockpit table with stainless steel base and folding high gloss varnished teak panels
- High gloss varnished chart tables and companionway
- Stainless steel cleats and spring cleats
- Stainless steel rubbing strake
- Stainless steel chafing protection rails at mooring cleats
- Stainless steel guard rail on bow
- Stern shower hot/cold
- Electric deck wash pump in anchor locker
- Swim ladder
- Teak outboard engine bracket on pushpit

Layout/Interior

- Modern, bright and exclusive interior in mahogany and vinyl-covered panels
- Interior design: Rhoades/Young London
- Saloon with U-shaped dinette on folding saloon table to port and sofa to starboard
- L-shaped galley to port aft
- Corian worktop
- Gas stove FORCE10 (2 burners and oven)
- Double sink with extra manuel seawater pump
- High splash protection between sink and dinette
- Extra folding worktop
- Large electric coolbox
- Extra refrigerator with stainless steel front
- 230 V microwave
- Owner's cabin forward with double berth (Tempur mattresses), plenty of storage space in lockers, drawers and shelves
- En-suite owner's heads to portside
- Aft cabin with double berth and lockers to portside
- Second heads compartment with separate shower stall to starboard aft
- OCEANAIR blinds and mosquito screens in deck hatches
- Porthole for aft cabin towards cockpit

Technical Equipment

- VOLVO PENTA D2-75 4 cylinder inboard turbodiesel 75 hp/55 kw with saildrive
- 3 bladed folding propeller Flex-o-Fold
- Electronic Morse throttle with gas lever at both helmstations
- Bowthruster Sleiþner SP125T
- 230 V shore power connection with 230 V sockets below decks
- Second shore power connection for airconditioning
- 2 x Mastervolt isolation transformer Mass GI 3.5
- Mastervolt battery charger 24 V/50 A
- Diesel generator MASTERVOLT Whisper 3.5 kw
- 3 x gel service batteries 24 V/130 Ah
- AGM starter battery 12 V/105 Ah
- Airconditioning for saloon, forward cabin and aft cabin
- Diesel heating EBERSPÄCHER D5L with outlets in all cabins
- Water heater 40 l
- 2 x stainless steel holding tank 70 l with Y-valve, deck connection and sea-discharge
- Red night lighting in interior
- Dimmer for saloon lighting
- Electric fans in saloon and cabins

Navigation/Electronics

- Instruments above companionway: RAYMARINE ST60+ log, ST60+ echosounder, ST60+ wind
- ST60+ Graphic display at helmstation and at chart table
- GPS/chartplotter RAYMARINE E80 on cockpit table
- Autopilot RAYMARINE ST6002+ with course computer 400G and Mamba-drive
- Compass
- VHF RAYMARINE Ray54E with external speaker
- Screen with RAYMARINE keyboard at charttable
- Radio/CD-player PIONEER with two speakers in saloon and two cockpit speakers
- Flat screen TV in saloon to starboard
- DVD-player

Safety

- Active radar reflector SeaMe
- Electric remote switch for gas valve in galley
- Lifesling
- Fire extinguishers
- Electric and manual bilge pump
- Lifejackets

Accessories

- Gangway
- Dinghy AB Inflatables RIB
- Outboard engine HONDA 2.4 hp 4-stroke
- Canvas covers for helm stations, cockpit table and deck hatches
- Mooring lines
- Fenders

Brokerage Liability Disclaimer

All information especially regarding the VAT-status of a yacht has been supplied by third parties. It is non-binding and without guarantee, subject to error and alteration. Our brokerage relies exclusively on information supplied by the vendor carefully compiled and checked by us to the best of our knowledge. Hence, a liability for correctness and completeness of provided information cannot be assumed.

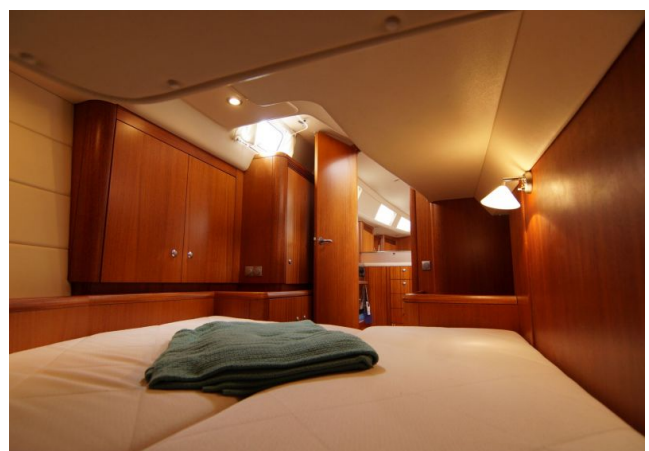
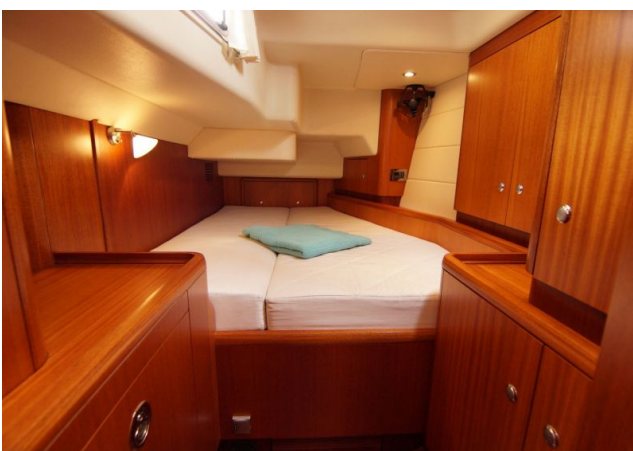
IMAGES



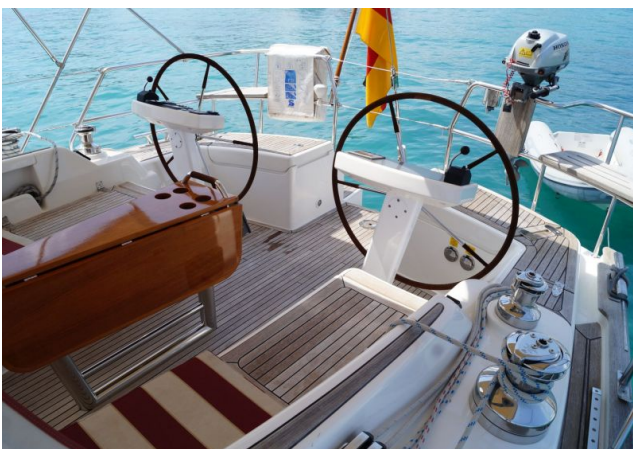
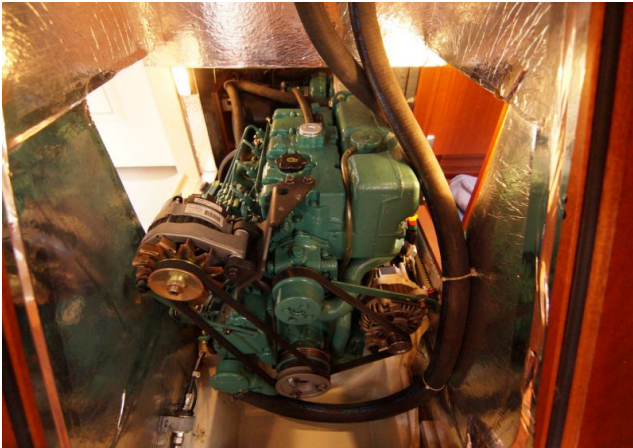
IMAGES



IMAGES



IMAGES



IMAGES

