



NAJAD 373

Year 2000



DIAMOND Yachts, Yachtzentrum Baltic Bay
Börn 17 | 24235 Laboe

NAJAD 373



Main Info

Model	NAJAD 373
Manufacturer	Najadvarvet AB/Schweden
Designer	judel/vrolijk & co./Najadvarvet
Category	Centercockpit cruiser
Year	2000
Location	Spanische Mittelmeerküste
Flag	Austria
VAT status	EU-VAT paid
Material	GRP
Rig	Sloop with cutter stay
Cabins	2
Berths	6

Dimensions & Material

LOA	11.30 m
LWL	9.75 m
Beam	3.65 m
Draft	1.90 m
Displacement	8.3 t
Sail area	76 m ²
Engine	YANMAR 4JH3E
Power	56 PS/41 KW
Drive	Shaft with folding propeller
Fresh water	315 L
Fuel	180 L
Holding tank	60 L

Key Facts

- Deep centercockpit with fixed windscreen.
- Numerous investments since 2018.
- Genoa and selftacking jib.
- New sails in 2018-2019.
- Shaft with Aquadrive and folding propeller.
- Exclusive, traditional mahogany interior.
- Electric genoa winches.
- Bow thruster.

Description

Elegant and exclusive centrecockpit cruiser built by the quality yard Najadvarvet AB on the boatbuilder's island of Orust in the Western Swedish archipelago. The NAJAD 373 has beautiful lines and offers plenty of comfort and space below decks despite her low freeboard. 2 cabin layout with spacious owner's cabin aft across the full beam of the yacht and ample storage space throughout the interior. The NAJAD 373 is a safe and comfortable blue water yacht. The judel/vrolijk [&] co.-design is quick and easy to handle and is particularly suitable for small crews. Deep and well protected centre cockpit with fixed windscreen and high coaming. Well-maintained and fully equipped yacht offered by her second owner. This NAJAD 373 has been in the Baltic until 2021 and was only delivered to the Mediterranean this summer. Teak deck, gelcoat and deck gear are not as weathered and worn, as on other Mediterranean yachts. Indoor winter storage every year and continuous care and technical maintenance. The owner has replaced or purchased many components since 2019 (new sails, new navigation electronics, new heating, new safety equipment, new running rigging etc.). There is no backlog of necessary investment.

Rig/Sails

- Deck stepped, 9/10 fractional SELDEN mast with two sets of spreaders
- SELDEN boom with single line reefing system (2 reefs)
- Fixed SELDEN kicker with gas spring
- Genoa furling system FURLEX 310S
- Removable cutter stay with pelican quick tensioner
- Manual backstay adjuster
- Running rigging replaced 2018-2020
- Spinnaker gear
- Carbon fibre spinnaker pole
- Bowsprit for gennaker
- 3 colour light and anchor light in mast top
- Fullbatten mainsail Gran-Sails/Sweden Dacron
Crosscut approx. 34 m² with three reefs (new 2019)
- Lazy bag with lazy jacks
- Furling genoa 130 % Gran-Sails/Sweden Dacron Radial
Cut approx. 42 m² with UV-protection (new 2020)
- Self-tacking jib UK-Sailmakers
- Gennaker A2 Gran-Sails/Sweden approx. 110 m² (new 2021) in snuffer
- Cutter jib Gran-Sails/Sweden Dacron approx. 18 m² for removable cutter stay
- Storm jib

Deck

- Teak deck on running decks, coachhouse roof, swim platform and in cockpit
- Electric genoa winches ANDERSEN 52.2STE
- Main sheet winches ANDERSEN 28.2ST
- Electric anchor windlass with remote control in cockpit
- Mooring gear: DELTA-anchor 20 kg and 75 m anchor chain 8 mm
- Large cockpit locker to starboard
- Deck lockers below aft deck
- Chafing protection on all mooring cleats
- Spring cleats
- Fixed windscreen with handles on the outside
- Sprayhood
- Cockpit cover
- Track and traveller for self-tacking jib
- Line-adjustable genoa sheeting points
- Folding cockpit table with extension
- Integrated teak seats in pushpit
- Stern shower hot/cold at swim platform
- Swim ladder
- Bow ladder

Layout/Interior

- Saloon with L-shaped sofa at folding saloon table to port
- Longitudinal sofa to starboard
- Leecloth on port sofa
- Longitudinal galley in passage to aft cabin
 - Worktop in CORIAN
 - Gas stove (2 burners and oven)
 - El. remote switch for gas valve
 - Double sink
 - Electric cool box approx. 92 l
- Forward facing chart table to starboard
- Heads compartment to starboard aft
- Spacious owner's cabin aft with double berth to starboard, seat and ample storage in lockers and compartments.
- Guest cabin forward with V-shaped double berth and lockers
- Beautiful, traditional interior in African mahogany
- LED interior lighting

Technical Equipment

- YANMAR 4JH3E 4 cylinder inboard diesel 56 hp/41 KW
- Shaft drive with Aquadrive flexible coupling, 3 blade folding propeller Flex-o-Fold and line cutter on propeller shaft (new 2020)
- Stainless steel diesel tank approx. 180 l
- Bow thruster 7 hp
- 230 V shore power connection with 230 V sockets in the interior
- Isolation transformer 230 V
- Inverter 12 V/230 V/1.000 W
- 3 x Victron gel service battery 12 V/165 Ah (new 2021)
- Starter battery 12 V/65 Ah
- 2 x Victron Blue Smart IP22 charger (new 2021)
- Battery monitor DCC4000
- Solar panel on coachhouse roof
- Diesel heater 3 KW (new 2021)
- Hot water boiler 20 l heated via engine and 230 V heating element
- Stainless steel holding tank approx. 60 l with Y-valve, deck connection and sea discharge
- LED navigation lights

Navigation/Electronics

- RAYTHEON ST60 Tridata (log and depth sounder)
- ST60 Wind
- 2 x ST60 Multi Display
- GPS/chartplotter RAYMARINE Axiom 9 (new 2018) in cockpit behind windscreen
- GPS/chartplotter RAYMARINE Axiom 7 (new 2021) on chart table
- AIS Class B transponder RAYMARINE AIS700 (new 2018)
- Autopilot RAYMARINE EV-200 (new 2018)
- Radio remote control RAYMARINE S100 (new 2020)
- VHF radio ICOM Marine M-423G (new 2018)
- Compass
- Radio/CD player BLAUPUNKT with two speakers in saloon and two cockpit speakers
- R[&]R combi antenna "Panama" (VHF/FM/MW/GSM/TV)

Safety

- Life raft 4 pers. in container at pushpit (new 2020)
- EPIRB (new 2020)
- Three fire extinguishers (new 2021)
- Jack stays on deck
- Padeyes for lifebelts in cockpit
- Rescue collar
- Radar reflector Firdell Blipper on mast
- Electric bilge pump and manual bilge pump

Accessoires

- Cockpit cushions
- Canvas covers for steering wheel, winches and deck hatches
- Fenders
- Mooring Lines
- Stern anchor

Brokerage Liability Disclaimer

All information especially regarding the VAT-status of a yacht has been supplied by third parties. It is non-binding and without guarantee, subject to error and alteration. Our brokerage relies exclusively on information supplied by the vendor carefully compiled and checked by us to the best of our knowledge. Hence, a liability for correctness and completeness of provided information cannot be assumed.

IMAGES



IMAGES



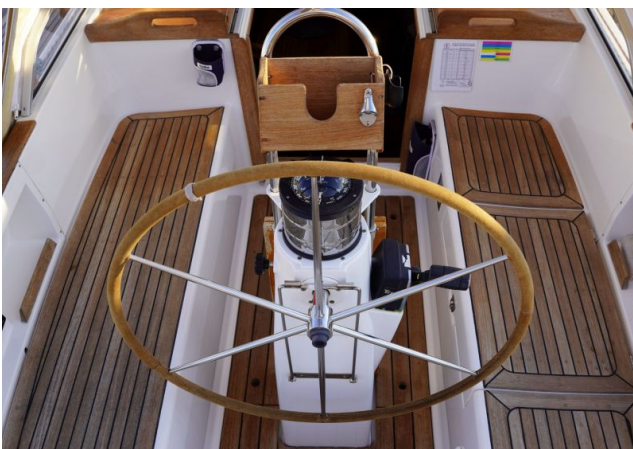
IMAGES



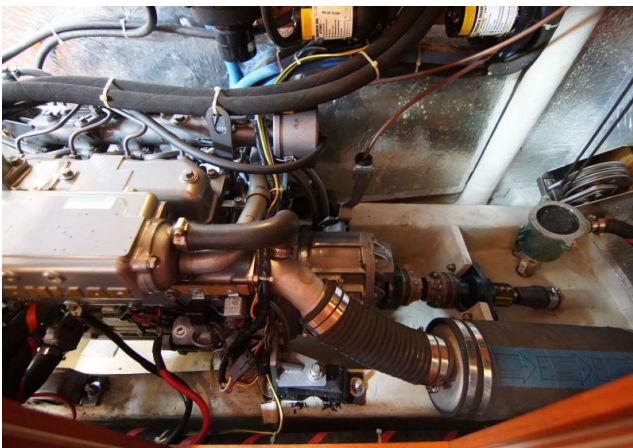
IMAGES



IMAGES



IMAGES



IMAGES

