



MOODY 45 CLASSIC

Year 2009



DIAMOND

DIAMOND Yachts, Yachtzentrum Baltic Bay
Börn 17 | 24235 Laboe

MOODY 45 CLASSIC



Boat sold.

Main Info

Model	Moody 45 Classic
Manufacturer	Moody Boats (GER)
Designer	Bill Dixon
Category	Sailing yacht
Year	2009
Location	Schlei/Ostsee
Flag	Germany
VAT status	EU-VAT paid
Material	GRP
Rig	Sloop
Cabins	3
Berths	6

Dimensions & Material

LOA	14.03 m
LWL	12.20 m
Beam	4.20 m
Draft	2.20 m
Displacement	12.5 t
Sail area	96 m ²
Engine	YANMAR 4JH4-TE
Power	75 PS/55 KW
Drive	Saildrive with folding propeller
Fresh water	320 L
Fuel	220 L

Key Facts

- Hull painted in AWLGrip "Flag Blue".
- Retractable bow thruster.
- Mahogany interior.
- Teak decks.
- Fixed windscreen.
- Electric furling systems.
- Electric winches.
- 3 cabin-layout.

Description

Safe, seaworthy but fast cruising yacht designed by the famous British architect Bill Dixon. The Moody 45 Classic combines traditional lines with modern yacht design. It boasts a large and spacious but very well protected cockpit with two helm stations, high cockpit coaming, big cockpit table and fixed windscreen. It offers a luxurious, spacious forward owner's cabin with en-suite owner's heads to starboard. Beautiful, elegant retro classic design with oval coachhouse windows, negative yacht stern and characteristic angular coachhouse profile. This Moody 45 Classic is a very well equipped owner's yacht. 3-cabin-layout with two heads compartments and interior in high gloss varnished mahogany with saloon upholstery in blue. The hull is painted in AWLGrip "Flag Blue". Extensive specification with SELDEN electric in-mast furling, electric genoa furling system, electric winches, retractable bow thruster, teak decks, inverter, additional generator, large battery bank etc. The title photo is a brochure picture showing a sistership.

Rig/Sails

- Deck stepped 9/10 fractional electric SELDEN furling mast
- Two sets of aft-swept spreaders
- Electric genoa furling system FURLEX 300E
- Manual backstay adjuster
- Furling mainsail triradial approx. 56 m² with vertical battens
- Self-tacking jib approx. 38 m² with UV-protection
- Furling genoa 140 % approx. 59 m² with foam reefing compensator in luff and UV-protection
- Furling genaker incl. furling system
- Line-adjustable genoa sheeting points, with ball bearing cars
- Track with traveller for self-tacking jib
- Gennaker deck gear

Deck

- Teak deck on side decks, swim platform and in cockpit
- High gloss varnished teak on cockpit coaming
- Electric anchor windlass below decks
- Mooring gear: DELTA-anchor 25 kg with 60 m stainless steel anchor chain 8 mm
- folding swim platform with teak deck
- Folding teak cockpit table with stainless steel base
- Integrated teak seats in pushpit
- Fixed windscreen
- Sprayhood
- Cockpit cover
- Deck lockers below helmsman's seats in cockpit
- Storage compartment for life raft in cockpit floor
- Teak rubbing strakes with stainless steel profile on hull sides
- Spring cleats
- Gates in lifelines to starboard and port
- LEWMAR 54.2AEST electric primary winches
- Electric halyard winch MSM 48EST to starboard
- Manual halyard winch LEWMAR 50.2AST to port
- Stern shower hot/cold
- Swim ladder

Layout/interior

- Moody 45 Classic in 3 cabin-layout with two heads (layout: A1/B1/C1)
- Spacious saloon with dinette to starboard side around saloon table (saloon upholstery colour: "Monaco Blue")
- Two armchairs on port side with combined chart table/coffee table
- L-shaped galley to starboard aft
 - Worktop in CORIAN
 - Electric coolbox approx. 130 l
 - Gas stove 3 flames and oven
 - Double sink
 - Ample storage in lockers, drawers and compartments
- Owner's cabin forward with double berth, seat and lockers
- Owner's heads to starboard forward with separate shower
- Two aft cabins with double berth and locker
- Aft heads compartment with separate shower to port
- Interior in high-gloss varnished mahogany
- OCEANAIR blinds and mosquito screens in deck hatches

Technical Equipment

- YANMAR 4JH4-TE 4 cylinder turbo diesel 75 hp/55 KW
- Saildrive with 3-blade folding propeller Flex-o-Fold
- Retractable bowthruster MAXPOWER
- 230 V shore power connection with 230 V sockets in the interior
- Additional alternator MASTERVOLT 12 V/130 A
- Combined battery charger and inverter VICTRON Combi 12 V/80 A/2.000 W
- 4 x service battery AGM 12 V/95 Ah
- Starter battery AGM 12 V/70 Ah
- Battery controller
- SLS interior lighting system with dimmer in saloon
- Holding tank with sea discharge and deck nozzle
- Diesel heating EBERSPÄCHER D5 with outlets in saloon and all cabins

Navigation/Electronics

- Instruments: 4 x SIMRAD multifunction display IS20 with transducers for log, echo sounder and wind
- SIMRAD IS20 wind display
- GPS/chartplotter BROOKS [&] GATEHOUSE in cockpit
- Autopilot SIMRAD AP24 incl. gyro sensor
- VHF RAYMARINE Ray240E
- 2 x steering compass
- Navtex NASA Target Pro
- TV 22" with electric lift in saloon to port side
- SONY Radio/CD/DVD-player with two speakers in saloon and two cockpit speakers
- Clock, barometer

Safety

- Liferaft 6 pers.
- 6 x automatic life jacket
- Electric and manual bilge pump
- Signal horn
- 2 x horseshoe
- Lifebuoy
- Lifesling

Accessories

- Dinghy
- Cockpit cushions
- Cover for furling genoa
- Cover for cockpit table
- Fenders
- Mooring lines

Brokerage Liability Disclaimer

All information especially regarding the VAT-status of a yacht has been supplied by third parties. It is non-binding and without guarantee, subject to error and alteration. Our brokerage relies exclusively on information supplied by the vendor carefully compiled and checked by us to the best of our knowledge. Hence, a liability for correctness and completeness of provided information cannot be assumed.

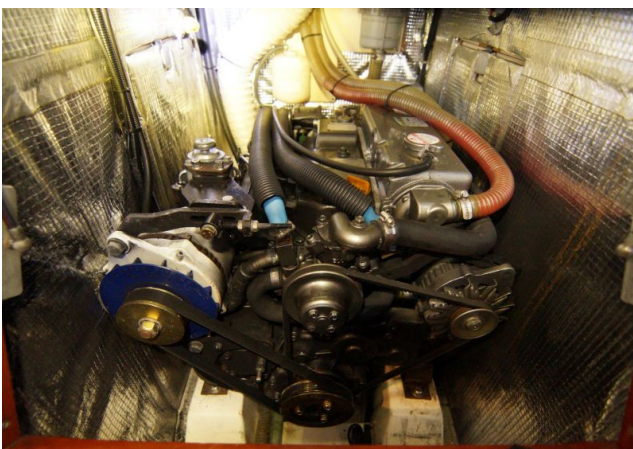
IMAGES



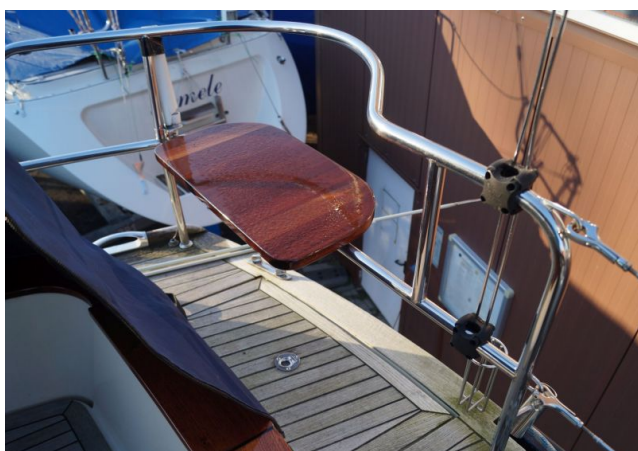
IMAGES



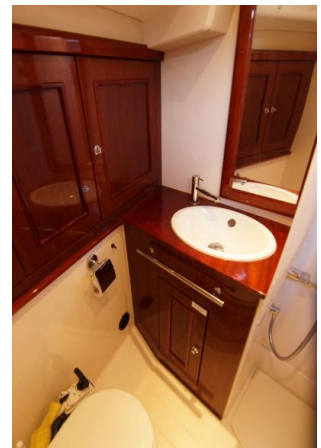
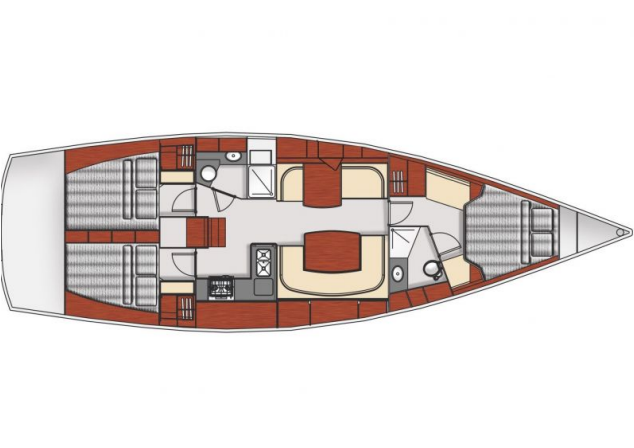
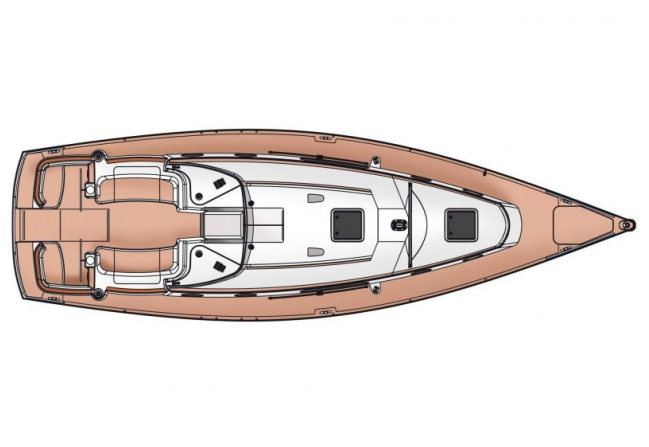
IMAGES



IMAGES



IMAGES



IMAGES

