



JEANNEAU MERRY FISHER 895

Year 2017



DIAMOND

DIAMOND Yachts, Yachtzentrum Baltic Bay
Börn 17 | 24235 Laboe

JEANNEAU MERRY FISHER 895


129.000,00 €

EU-VAT paid

Main Info

Model	Jeanneau Merry Fisher 895
Manufacturer	Chantiers Jeanneau SA (FRA)
Designer	Centkowski & Denert Design
Category	Cabin cruiser
Year	2017
Location	Laboe/Ostsee
Flag	at
VAT status	EU-VAT paid
Material	GRP
Cabins	2
Berths	4

Dimensions & Material

LOA	9.07 m
Beam	2.99 m
Draft	0.63 m
Displacement	3.5 t
Engine	YAMAHA F350XL
Power	350 PS/257 KW
Drive	Outboard engine
Fresh water	160 L
Fuel	400 L
Holding tank	80 L

Key Facts

- YAMAHA F350XL 350 hp outboard engine.
- Complete navigation incl. radar.
- Very good condition.
- Fully equipped yacht.
- Diesel heating.
- Bowthruster.

Description

Versatile and comfortable cabin cruiser with outboard engine built by the French yard Chantiers Jeanneau SA. The Merry Fisher 895 offers a remarkable amount of living space on deck and in her bright, friendly interior in a handy and easy-to-manage size. A light-flooded deckhouse with 360° panoramic views, a spacious owner's cabin forward with a central double berth and plenty of windows and hatches as well as an underfloor cabin to port with a double berth offer space for four guests. An extra berth can be found in the dinette, which can be converted into a bed. Wide running decks with high coaming and an additional railing ensure safe movement on deck and the side exit door to starboard next to the helm station allows the skipper direct access to the midship cleat. In the large cockpit, the aft bench seat can be moved aft and the entire seating area can be converted into a sunbed. This Jeanneau Merry Fisher 895 is a well-maintained, fully equipped private boat offered by her first owner (she has never been chartered). The boat has the largest single engine available: YAMAHA F350XL 350 hp 8 cylinder. The outboard has only run 185 hours and has been continuously maintained by a specialised service company. Extensive specification incl. bow thruster, diesel heating, hot water boiler, Lowrance navigation incl. 9" plotter, radar, VHF, AIS etc. The Merry Fisher is moored here in the Baltic Bay-marina close to Kiel and can be inspected upon appointment.

Deck

- Self-draining anchor locker
- Electric LEWMAR anchor windlass with remote control at helm station
- Mooring gear: FORCE-anchor 15 kg with 50 m stainless steel anchor chain 8 mm
- Open pulpit with bowsprit in stainless steel and teak incl. integrated bow ladder
- Large mooring cleats forward and aft and spring cleats amidships
- Rubbing strake on hull sides
- Handrails on sides of superstructure and additional handholds on front of coachhouse roof
- Cockpit with high, all-round coaming and recessed hatch
- The aft cockpit bench seat can be moved aft
- L-shaped seating area with cockpit cushions and cockpit table (can be converted to sun lounger)
- Large locker in cockpit floor
- Cockpit bimini with side and aft panels
- LED cockpit lighting
- Engine bracket for additional "emergency outboard engine"
- Stern shower
- Swim ladder

Layout/Interior

- Bright deckhouse with 360° panoramic view through windscreen, large side windows and sliding door to cockpit
- Dinette to port with saloon table and two bench seats
- The backrest of the forward bench seat can be folded down to create a passenger bench
- The saloon table can be lowered and converted into an additional berth
- Helm position to starboard with steering wheel, instrument console and swivelling driver's seat
- Galley block to starboard aft
 - 2-burner gas cooker
 - Sink
 - Refrigerator
- Side exit door in deckhouse to starboard directly next to the steering position
- Sliding window in the deckhouse to port
- Two large sliding hatches in the deckhouse roof with roller blinds and mosquito screens
- Curtains for side windows and sliding door in deckhouse
- Forward cabin with double berth (slatted frames below mattresses), hull windows, deck hatch, storage compartments and shelves
- Port underfloor cabin with double berth, seat, locker and porthole
- Heads compartment with marine toilet, sink, hull window and porthole
- LED interior lighting and indirect LED lighting in saloon and forward cabin

Technical Equipment

- YAMAHA F350XL 8 cylinder 4-stroke outboard engine 350 hp/257 KW (engine upgrade)
- Engine hours (as of April 2024): 185 h
- Hydraulic steering
- Bow thruster QUICK with separate battery
- Electro-hydraulic trim flaps LENCO
- Electric windscreen wipers for windscreen
- 230 V shore power connection with charging cable
- 230 V sockets in interior
- Battery charger Cristec 12 V/25 A
- Service batteries 12 V/140 Ah
- Starter battery 12 V/140 Ah
- Solar panel 160 Wp on deckhouse roof with charge controller
- Diesel heating EBERSPÄCHER
- Fresh water system with pressure pump and hot water boiler 25 l

Navigation/Electronics

- 9" GPS/chart plotter Lowrance Combo HDS Touch 9 G3
- Lowrance P79 transducer for log and echo sounder
- Compass
- Radar antenna Lowrance
- VHF-radio Lowrance VHF Link-8 incl. AIS
- FUSION MS-RA70N marine radio/bluetooth/USB player with two speakers in deckhouse
- TV LED flat screen in forward cabin

Safety

- Electric signal horn
- Manual and electric bilge pump

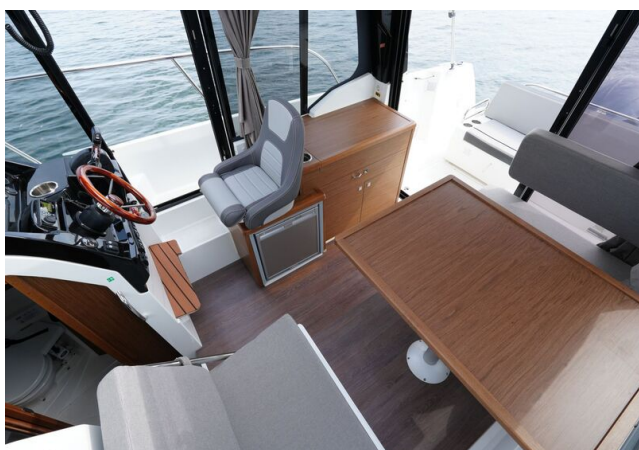
Brokerage Liability Disclaimer

All information especially regarding the VAT-status of a yacht has been supplied by third parties. It is non-binding and without guarantee, subject to error and alteration. Our brokerage relies exclusively on information supplied by the vendor carefully compiled and checked by us to the best of our knowledge. Hence, a liability for correctness and completeness of provided information cannot be assumed.

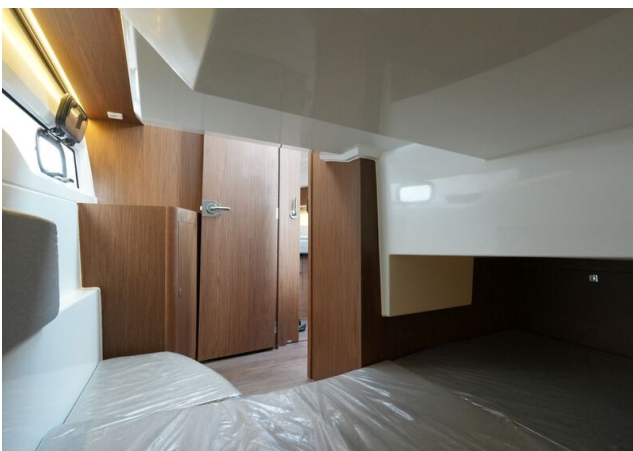
IMAGES



IMAGES



IMAGES



IMAGES

