



HANSE 675

Year 2018



DIAMOND Yachts, Yachtzentrum Baltic Bay
Börn 17 | 24235 Laboe

HANSE 675


1.290.000,00 €

excl. VAT

Main Info

Model	Hanse 675
Manufacturer	HanseYachts AG (GER)
Designer	judel/vrolijk & co.
Category	Sailing yacht
Year	2018
Location	Südfrankreich/Mittelmeer
Flag	ch
VAT status	excl. VAT
Material	GRP
Rig	Sloop with furling mast
Cabins	4
Berths	8

Dimensions & Material

LOA	21.10 m
LWL	19.20 m
Beam	5.90 m
Draft	3.10 m
Displacement	38 t
Sail area	247 m ²
Engine	VOLVO PENTA D4-225
Power	225 PS/165 KW
Drive	Shaft with folding propeller
Fresh water	900 L
Fuel	1.100 L
Holding tank	270 L

Key Facts

- 4-cabin layout with owner's cabin forward.
- Diesel generator and air conditioning.
- Fixed GRP cockpit bimini.
- Hydraulic furling mast.
- Includes WILLIAMS 325 Turbojet.
- Bow and stern thrusters.
- Hydraulic gangway.
- Light oak interior.

Description

The Hanse 675 is the largest model built by the renowned German shipyard HanseYachts. Designed by judel/vrolijk & co., her sleek hull lines, clean flush deck with an oversized cockpit, and low-profile, elegant coachhouse give the yacht a striking presence and the feel of a mini-superyacht. Despite her size, the Hanse 675 is easily and safely handled by a small crew. This is made possible by her self-tacking jib, an ergonomic deck layout, and the smart routing of all lines—sheets, halyards, and control lines—directly to the winches located just in front of the twin helm stations. Below deck, the bright, modern, loft-style interior offers luxurious comfort and an impressive sense of space. Large hull windows, coachhouse windows, numerous deck hatches, portholes, and the expansive sliding sunroof in the saloon ceiling flood the interior with natural light and fresh air. At the stern, the hydraulically operated bathing platform reveals a fore-and-aft dinghy garage equipped with the Hanse Easy Tender System, designed to accommodate a WILLIAMS 325 Turbojet. This yacht is sold by her first owner and is meticulously maintained and exceptionally well-equipped. The hull is painted grey with black accent stripes. She features Hanse's interior layout version A2/B4/C1/D1, including a forward owner's cabin with angled double berth and a reversed saloon seating area to starboard. Almost no option was left out during commissioning — she is fitted with hydraulic furling systems for the ...

Rig/Sails

- Keel-stepped, top-rigged aluminium furling mast SELDEN
- Three pairs of aft-swept spreaders
- Rig painted black
- Hydraulic in-mast furling system SELDEN
- Hydraulic FURLEX headsail furler
- Second forestay with hydraulic FURLEX headsail furler
- Electro-hydraulic backstay tensioner RECKMANN (twin-cylinder)
- Electro-hydraulic boom vang RECKMANN
- 6 spreader lights up and down
- Manual SELDEN halyard tensioners for furling sails at mast
- Furling mainsail NORTH Sails approx. 133 m² (new 2024) with full vertical battens
- Self-tacking jib NORTH Sails 3Di Endurance approx. 99 m² (new 2024) with vertical leech battens and UV-protection
- Code-55 NORTH-Sails 3Di approx. 190 m² (new 2024) with UV-protection on forward furling forestay
- Code-0 by ELVSTRÖM approx. 220 m² on forward forestay
- Gennaker gear

Deck

- Teak deck on running decks, coachhouse roof, swim platform, and cockpit
- Electric anchor windlass LEWMAR V6 24 V/2.000 W with capstan winch and remote control
- Ground tackle: stainless steel Ultra anchor 60 kg with 100 m stainless steel anchor chain 13 mm
- Four retractable stainless steel mooring cleats SEASMART at bow and stern
- Four retractable stainless steel spring cleats SEASMART amidships
- Boarding gates to port and starboard with removable side boarding ladder
- Two electric primary winches LEWMAR 80EST Evo
- Two electric secondary winches LEWMAR 65EST Evo
- Wide, hydraulically folding bathing platform with integrated swim ladder and remote control
- Tender garage installed fore-and-aft with "Hanse Easy Tender System" (electric winch, rollers, and rail system), electric compressor, and secondary access via cockpit floor hatch
- Hydraulic gangway BESENZONI with remote control
- Spacious guest cockpit with two electrically height-adjustable teak cockpit tables (can be lowered and converted into two large sunbeds with additional cushions)
- Twin helm stations aft with clear-coated carbon fiber wheels, large instrument pods, and folding helm seats
- Wide, black-painted GRP bimini over cockpit with sliding canvas roof aft and integrated lighting
- Central cockpit wet bar with fridge, sink, and grill
- Sprayhood and side panels integrated into GRP bimini
- Cockpit shower hot/cold
- Electric freshwater deck wash pump
- 24 underwater lights
- LED lighting for side decks integrated in the toe rail

Layout/Interior

- Bright and airy interior in modern "loft style" with oak wood, light Arcacia floorboards, white-clad panels, and horizontal surfaces in white Corian
- Hanseyachts interior layout version A2/B4/C1/D1 with angled owner's berth forward and four cabins. Custom modifications on this yacht: reversed seating arrangement in the saloon to starboard and a small office in the portside lateral cabin
- Spacious saloon with L-shaped sofa to starboard and dining table to port
- Saloon upholstery in white leather
- Chart table with instrument console aft to starboard
- Bar unit aft to port forward of the galley passage with fridge, wine cooler, icemaker, and built-in MIELE espresso machine
- Large panoramic glass roof with sliding sunroof above the saloon and large hull and coachroof windows
- Generous galley to port aft, separated by sliding door
 - Countertop in white Corian
 - Large stainless steel sink
 - Gas stove (3 burners and oven)
 - Remote switch for gas valve
 - Range hood
 - Large fridge (3 drawers)
 - Steam oven 230 V
 - Microwave 230 V
 - Dishwasher 230 V
- Luxurious owner's cabin forward with angled island double berth, wardrobes, lockers, electronic safe, bench seat, two deck hatches, and large hull windows
- Owner's heads compartment in forepeak with sink, separate shower, electric toilet, and large deck hatch
- VIP guest cabin to port with double berth, wardrobe, lockers, and en-suite heads compartment with sink, shower stall, and electric toilet
- Lateral cabin to port with bunk beds, small fold-out desk, bookshelf, wardrobe, and en-suite heads compartment with sink and electric toilet
- Aft cabin to starboard with double berth, wardrobe, lockers, and en-suite guest bathroom with washbasin and electric toilet
- Multifunctional storage/utility room to port aft with separate cockpit access
- Blinds for hull and coachroof windows
- Shades and mosquito screens for deck hatches
- LED interior lighting
- LED ambient lighting under furniture bases and behind ceiling/wall panels

Technical Equipment

- VOLVO PENTA D4-225 6-cylinder inboard diesel engine 225 hp/165 kW
- Engine operating hours (as of February 2025): 1.805 hours
- VOLVO PENTA EVC system with two electronic throttle controls
- Shaft drive with 4-blade folding propeller Flex-o-Fold
- Retractable bow thruster MAXPOWER 24 V with separate battery
- Retractable stern thruster MAXPOWER 24 V with separate battery
- Remote control for bow and stern thrusters
- Diesel generator Fischer Panda 15000i 15 kVA (operating hours as of February 2025: 1.481 hours)
- 230 V shore power connection with shore power cable and 230 V sockets in interior
- Combined battery charger and inverter MASTERVOLT Mass Combi 24 V/200 A/7.000 W
- Second shore power connection with additional 100 A 24 V battery charger
- Onboard network with CZONE bus system
- 8 x AGM service batteries 12 V/225 Ah (total capacity: 24 V/900 Ah)
- AGM starter battery 12 V/90 Ah
- Solar panels on GFK bimini
- Large air conditioning system 52.000 BTU (seven units for all areas)
- Watermaker 230 V/200 l/h
- Hot water boiler 75 l
- Freshwater shore connection
- Diving compressor BAUER Junior
- 4 x electric toilets with seawater flushing
- Holding tanks 185 l + 85 l with deck connection and sea discharge
- Washer/dryer 230 V
- Freezer in utility room
- LED navigation lighting

Navigation/Electronics

- BROOKS [&] GATEHOUSE Hydra 5000 Instrument System
- 4 x B[&]G H5000 Multifunction Display in cockpit
- B[&]G H5000 CPU
- Transducer for log, echo sounder, and wind
- Forward-facing echo sounder B[&]G ForwardScan
- B[&]G Autopilot with Precision 9 Compass, 2 x H5000 Control Units in cockpit and wireless remote control B[&]G WR10
- 2 x B[&]G Zeus² Touch 12" chart plotters at helm stations
- 2 x B[&]G Zeus² Touch 19" chart plotters in foldable consoles at front of cockpit
- B[&]G Zeus² Touch 16" chart plotters at chart table
- B[&]G 4G broadband radar antenna on first mast (black painted)
- B[&]G AIS Class B transponder
- VHF Radio B[&]G V90 with additional wireless handset B[&]G H90
- VOLVO PENTA interface for displaying engine data on chart plotters
- FLIR thermal imaging camera below first spreader
- TV Satellite Antenna KVH Tracvision TV5 (black painted) on first spreader
- GoFree Wi-Fi module 3G/4G antenna (black painted) on the second spreader with Wi-Fi router
- Large SAMSUNG 75" QLED TV screen at front of saloon
- Second SAMSUNG 65" screen at chart table
- Blu-ray player in saloon
- Apple TV in saloon
- BOSE Entertainment System with BOSE Lifestyle 650 home cinema, BOSE OmniLevel system with five cubes and subwoofer in saloon and four Bowers [&] Wilkins cockpit speakers

Safety

- SeaSafe 8-pers. liferaft in container below helm seat
- JONBUOY rescue module on pushpit
- EPIRB
- Jack stays on deck
- Electric and manual bilge pumps
- Fire extinguisher
- Distress signal kit "Watching Man"
- Alarm system and GPS tracking system

Accessories

- WILLIAMS 325 Turbojet tender
- SEABOB F5S underwater scooter including fast charging station
- Second anchoring equipment: DELTA anchor 45 kg with 60 m anchor chain 13 mm
- Cockpit cushions and cushions for helm seats
- Sunbed cushions on foredeck
- Covers for helm consoles, cockpit tables, liferaft, and winches
- Tool kit
- Spare parts kit
- Fenders
- Mooring lines

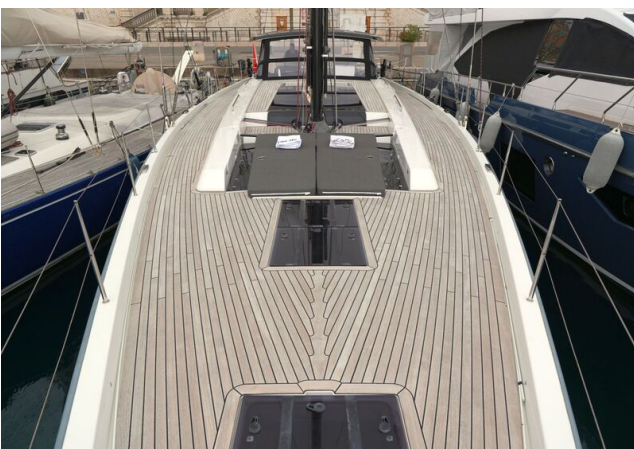
Brokerage Liability Disclaimer

All information especially regarding the VAT-status of a yacht has been supplied by third parties. It is non-binding and without guarantee, subject to error and alteration. Our brokerage relies exclusively on information supplied by the vendor carefully compiled and checked by us to the best of our knowledge. Hence, a liability for correctness and completeness of provided information cannot be assumed.

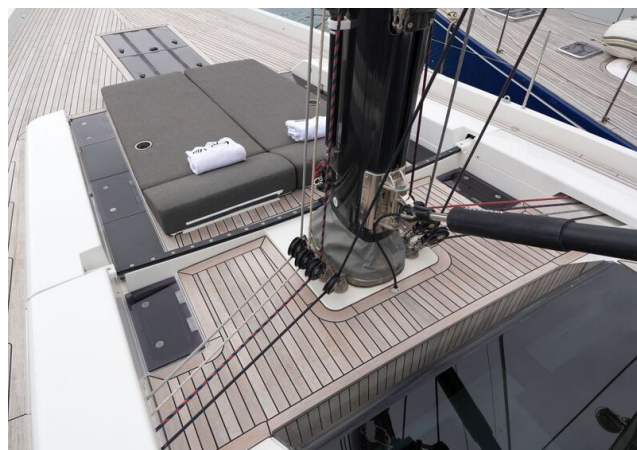
IMAGES



IMAGES



IMAGES



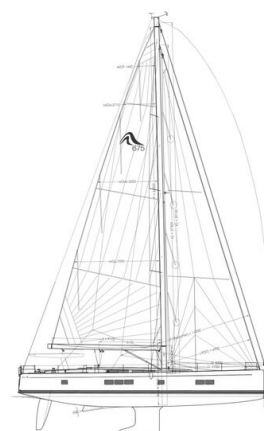
IMAGES



IMAGES



IMAGES



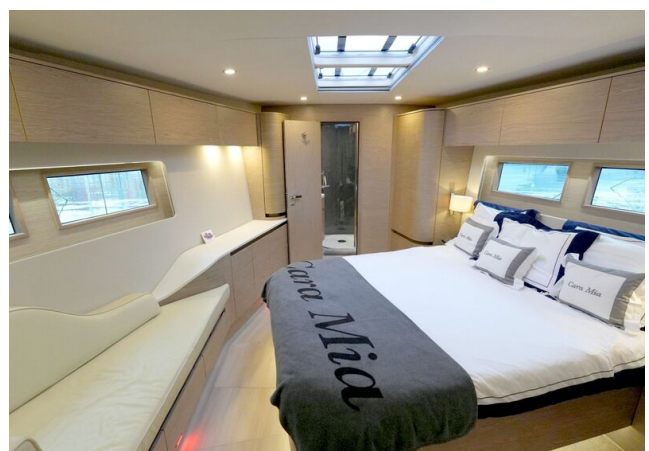
IMAGES



IMAGES



IMAGES



IMAGES



IMAGES



IMAGES

