



HANSE 315

Year 2022



DIAMOND Yachts, Yachtzentrum Baltic Bay
Börn 17 | 24235 Laboe

HANSE 315


SOLD
119.000,00 €

EU-VAT paid

Main Info

Model	Hanse 315
Manufacturer	Hanse Yachts AG (GER)
Designer	judel/vrolijk & co.
Category	Sailing yacht
Year	2022
Location	Deutsche Ostseeküste
Flag	Germany
VAT status	EU-VAT paid
Material	GRP
Rig	Sloop
Cabins	2
Berths	4

Dimensions & Material

LOA	9.62 m
LWL	8.70 m
Beam	3.35 m
Draft	1.85 m
Displacement	5.5 t
Sail area	47 m ²
Engine	YANMAR 2YM15
Power	14 PS/10 KW
Drive	Saildrive
Fresh water	210 L
Fuel	100 L
Holding tank	35 L

Key Facts

- Layout with open main bulkhead.
- Sail upgrade QUANTUM-Sails AC5.
- Mahogany interior.
- Self tacking jib.
- Gennaker with gear and snuffer.
- Spacious cockpit locker.
- Two steering wheels.
- Easy handling.

Description

Handy and fast cruiser with modern hull lines designed by judel/vrolijk [&] co. and characteristic, angular coachhouse profile. The Hanse 315 offers a considerable amount of living space for her handy size of less than 10 meters. Her pleasant, safe behavior at sea and a clever, ergonomic layout on deck and in the interior make the Hanse 315 the perfect boat for beginners and young families. Functional, friendly interior in silk varnished mahogany, white panels, laminate floorboards and beige upholstery. Spacious, bright saloon with two sofas, open fore peak and aft cabin with large double berth and locker. The combination of performance and safety and the considerable amount of space below decks earned the Hanse 315 the title "European Yacht of the Year 2016" in the family cruiser category. Cleverly equipped, very young private yacht sold by her first owner (first launch: 2023, never chartered). Hanse 315 interior version A1/B1/C1 and cockpit layout with two steering wheels. The yacht is equipped with the optional additional winches on the cockpit coaming, which also control the mainsheet and jib sheet. The Hanse 315 is in indoor winter storage on the German Baltic Coast and can be viewed any time by appointment.

Rig/Sails

- Deck-stepped, 9/10 fractional SELDEN mast
- Two sets of aft swept spreaders
- Fixed SELDEN kicker
- Adjustable backstay
- FURLEX headsail furling system
- Full batten mainsail QUANTUM-Sails AC5 triradial approx. 29 m² with two reefs
- SELDEN OWS sliders for mainsail
- Lazy jacks and lazy bag
- Self-tacking jib QUANTUM-Sails AC5 triradial approx. 17 m² with UV-protection
- QUANTUM-Sails gennaker approx. 77 m² in snuffer
- Gennaker gear

Deck

- FLEXITEEK deck on cockpit floor and seats
- Stainless steel bow fitting with anchor roller and step
- Mooring gear: DELTA-anchor 10 kg with 30 m anchor chain 8 mm
- Primary winches LEWMAR EVO 40ST
- Coachhouse winches LEWMAR EVO 40ST
- Two steering pedestals with black GRP steering wheels
- Sprayhood with opening center window
- Large cockpit locker to port
- Folding cockpit table in teak and stainless steel
- Swim ladder
- Spring cleats
- Large, folding swim platform
- Hot/cold cockpit shower
- Storage locker below helmsman's seats to starboard and port
- Track and traveler for self-tacking jib
- Teak rubbing strake on hull sides

Layout/Interior

- Hanseyachts layout version: A1/B1/C1
- Saloon with two longitudinal sofas at folding saloon table
- Chart table with control panel to port aft
- L-shaped galley to starboard aft
 - Work top in black CORIAN
 - Large electric cool box approx. 60 l
 - Gas stove (2 burners and oven)
 - Sink
- Open fore peak with double berth, deck hatch and storage space below berth
- Aft cabin to starboard with wide double berth, locker, deck hatch and opening porthole
- Heads compartment to port aft with marine toilet, sink, shower and deck hatch
- Silk varnished mahogany interior, white-covered panels and light-colored, laminated "Acacia" floorboards
- Interior lighting with LED ceiling spots, indirect LED light strips integrated in ceiling and reading lamps

Technical Equipment

- YANMAR 2YM15 2-cylinder inboard diesel 14 hp/10 KW
- Engine hours (as of December 2024): 79 h
- Engine compartment with easy service access from front and both sides
- Saildrive with 2-blade fixed propeller
- Diesel tank approx. 100 l
- 230 V shore power connection with charging cable
- Battery charger 12 V/35 A
- AGM service battery 12 V/90 Ah
- AGM starter battery 12 V/90 Ah
- Hot water boiler 20 l (via heat exchanger on engine and 230 V shore power)
- Holding tank approx. 35 l with deck connection and sea discharge
- LED navigation lights

Navigation/Electronics

- 2 x BROOKS [&] GATEHOUSE Triton² instrument display with transducers for log, echo sounder and wind
- Compass
- 7" multifunction display B[&]G Vulcan 7
- Autopilot B[&]G Nac-2
- Hand-held VHF-radio

Safety

- Electric and manual bilge pump

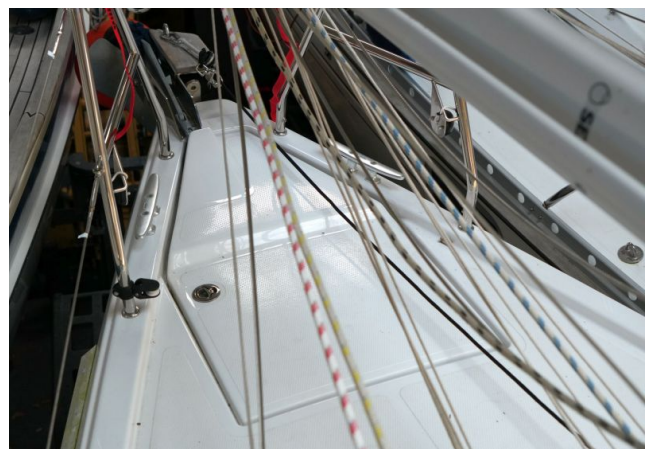
Accessories

- Fenders
- Mooring lines

Brokerage Liability Disclaimer

All information especially regarding the VAT-status of a yacht has been supplied by third parties. It is non-binding and without guarantee, subject to error and alteration. Our brokerage relies exclusively on information supplied by the vendor carefully compiled and checked by us to the best of our knowledge. Hence, a liability for correctness and completeness of provided information cannot be assumed.

IMAGES



IMAGES



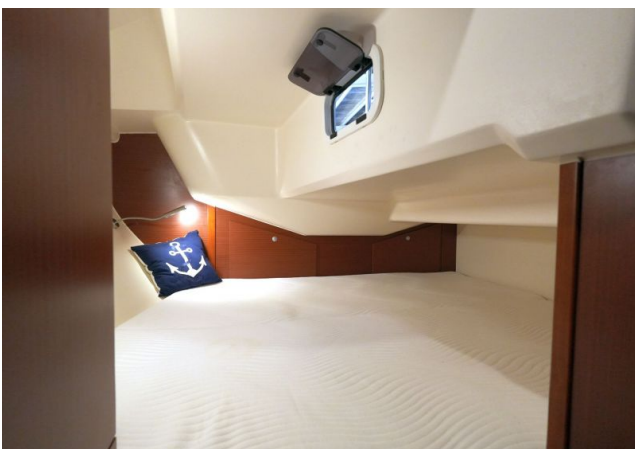
IMAGES



IMAGES



IMAGES



IMAGES

