



HALLBERG-RASSY 64

Year 2013



DIAMOND

DIAMOND Yachts, Yachtzentrum Baltic Bay
Börn 17 | 24235 Laboe

HALLBERG-RASSY 64



Boat sold.

Main Info

| | |
|---------------------|-------------------------|
| Model | Hallberg-Rassy 64 |
| Manufacturer | Hallberg-Rassy Varvs AB |
| Designer | Germán Frers |
| Category | Centercockpit cruiser |
| Year | 2013 |
| Location | Deutsche Ostseeküste |
| Flag | mt |
| VAT status | EU-VAT paid |
| Material | GRP |
| Rig | Sloop with furling mast |
| Cabins | 4 |
| Berths | 8 |

Dimensions & Material

| | |
|---------------------|------------------------------|
| LOA | 19.85 m |
| LWL | 17.53 m |
| Beam | 5.20 m |
| Draft | 2.50 m |
| Displacement | 36 t |
| Sail area | 173 m ² |
| Engine | VOLVO PENTA D6-300 |
| Power | 300 PS/221 KW |
| Drive | Shaft with folding propeller |
| Fresh water | 1.250 L |
| Fuel | 1.650 L |
| Holding tank | 225 L |

Key Facts

- Two armchairs in saloon to starboard.
- Diesel heating and aircondition.
- Lithium service battery bank.
- Burma-teak interior.
- Hydraulic furlers.
- Central island berth in owner's cabin.
- Diesel generator and two inverters.
- Hydraulic winches.
- Fixed doghouse.
- Watermaker.

Description

With the new flagship of the Swedish quality brand Hallberg-Rassy, design legend Germán Frers created the ultimate, exclusive blue-water cruiser. Outstanding performance, superior seaworthiness and safety, generous tank capacities, ample and easily accessible installation space for technical aggregates and plenty of living and storage space above and below decks determine the Hallberg-Rassy 64 for worldwide cruising and extended stays on board. The standard specification provides for a hydraulic furling rig, hydraulic genoa furling, hydraulic winches and a captive mainsheet winch system, so that the Hallberg-Rassy 64 can safely and easily be handled by a small crew despite her size. Deep, well-protected centercockpit with fixed doghouse and high, comfortable cockpit coaming. Spacious tender garage behind the large, hydraulic folding swim platform. This Hallberg-Rassy 64 is extensively equipped beyond the shipyard's standard and has only been sailed in the Baltic Sea since the handover to her first owner (currently she is the hands of her second owner). The vessel has been cared for by a professional skipper and is in excellent condition both technically and visually. Push button sailing thanks to additional hydraulic furling system for the cutter stay, retractable sternthrustrer and additional hydraulic halyard winch. In 2021 the battery bank was converted to MASTERVOLT lithium batteries, the capacity of which, together with the 12 KW diesel generator, an additional 24 V/150 ...

Rig/Sails

- Keel stepped, 9/10 fractional SELDEN hydraulic furling mast
- Three sets of aft-swept spreaders and diamond stay
- Standing rigging in rod
- Hydraulic FURLEX genoa furling system
- Cutter stay with hydraulic FURLEX furling system
- Captive winch for mainsheet
- Preventer on main boom
- Hydraulic outhaul
- Removable runners
- Insulated backstay as SSB antenna
- LED 3-colour light with anchor light in masthead
- Spreader lights (uplights) on all three sets of spreaders
- Central NAVTEC hydraulic panel in cockpit for hydraulic backstay tensioner (two cylinders) and hydraulic boom vang
- SELDEN mechanical tensioner for mainsail and headsail halyards
- Furling mainsail ELVSTRÖM EPEX EMS MAX with full length vertical battens
- Furling genoa ELVSTRÖM EPEX with UV-protection
- Cutter jib ELVSTRÖM EPEX with E-Flex reefing compensator and UV-protection
- Carbon fibre spinnaker pole
- Gennaker deck gear
- Hydraulic gennaker/code-0 furler RECKMANN
- Furling gennaker ELVSTRÖM colour: blue/red

Deck

- Teak deck on running decks, foredeck, coachhouse roof, aftdeck, swim platform and in cockpit
- Fixed doghouse with night lighting, opening centre window and teak deck on roof
- Electric anchor windlass LEWMAR V6 below decks with remote control at helm and additional radio remote control
- Mooring gear: DELTA-anchor 40 kg with 100 m stainless steel anchor chain 13 mm
- Hydraulic primary winches LEWMAR 80HST
- Hydraulic secondary winches LEWMAR 55HST
- Hydraulic halyard winch LEWMAR 55HST on port side next to mast
- Large electro-hydraulic folding swim platform with access ladder, three steps on outside and integrated swim ladder
- Spacious lazarette as dinghy garage behind swim platform with separate access hatch on aft deck
- Stern shower hot/cold
- Hydraulic gangway BIOINOX
- Large stainless steel mooring cleats fore and aft, four spring cleats amidships and two additional cleats aft with stainless steel rub rails on all cleats
- Solid, laminated rubbing strake with stainless steel profile on hull sides
- Electric deck wash pump
- Railing gates with integrated custom exit ladders to starboard and port
- Integrated teak seats in pushpit
- Stainless steel stern antenna mast with outboard engine crane and deck lighting
- Well protected centercockpit with doghouse and high cockpit coaming
- Central helm station with large steering wheel and wide console for instruments and controls
- High gloss varnished folding teak cockpit table with storage compartment
- Cockpit cover
- Cockpit locker to starboard
- High gloss varnished teak chart tables and companionway

Layout/Interior

- Exclusive, beautifully finished interior in satin-varnished Burma-teak
- Hallberg-Rassy 64 in layout version 2: Four cabin layout with central island berth in owner's cabin, two single armchairs in saloon to starboard, double bunk beds in walk through cabin to starboard and V-shaped double berth in forward cabin
- Spacious decksaloon with large front and side windows, U-shaped sofa and central bench seat around large saloon table to port and two single armchairs with bar cabinet inbetween to starboard
- Large, forward facing chart table with domestic electric panel and navigator's seat to starboard aft
- Generous, longitudinal galley on both sides in passage to aft cabin to port
 - Worktop in light grey Corian
 - Two refrigerators with drawers
 - Additional refrigerator
 - Refrigerator/freezer
 - Double sink
 - Electric stove (3 burners and oven)
 - Ample storage space in lockers, drawers, shelves and storage compartments
- Spacious, luxurious full-beam owner's cabin with queen-size island double berth (electric lifting head), lockers, dressing table, two seats, two hull windows, four coachhouse windows and deck hatch
- Owner's heads compartment with separate shower, electric toilet and washing machine
- VIP-guest cabin amidships to port with double berth, lockers and large deck hatch
- En suite heads compartments for VIP-guest cabin with shower doors and electric toilet
- Walk-through cabin to starboard with double bunk beds, locker and two deck hatches
- Guest heads to starboard with electric toilet
- Forward cabin with V-shaped double berth, lockers and deck hatch
- Carpet in saloon, galley and cabins
- Spring mattresses and lee cloth for berths
- Blinds and mosquito screens in deck hatches
- Blinds for deck saloon windows

Technical Equipment

- VOLVO PENTA D6-300 6-cylinder Common Rail turbo diesel 300 hp/221 KW with EVC (Electronic Vessel Control)
- Shaft drive with Aquadrive (flexible coupling), rope cutter and 3 blade GORI folding propeller
- Four stainless steel diesel tanks (total capacity: 1.650 l)
- Double RACOR diesel filters with water alarm
- VOLVO PENTA NMEA-interface to display engine data on RAYMARINE plotters
- Bow thruster SIDEPOWER 20 hp with separate battery
- Retractable stern thruster with separate battery
- On-board domestic service system as MASTERVOLT bus network
- 230 V shore power connection with 16 A and 32 A socket
- Insulation transformer MASTERVOLT Mass GI 7kVA
- 12 KW diesel generator MASTERVOLT Whisper 12 Ultra
- Additional alternator 24 V/150 A
- 2 x combined battery charger and inverter MASTERVOLT Mass Combi 24 V/4.000 W/120 A
- Battery charger MASTERVOLT 24 V/30 A
- 24 V Lithium service battery bank 3 x MASTERVOLT MLI Ultra 24/5500 24 V/200 Ah (new 2021)
- Battery charger MASTERVOLT 12 V/100 A
- 12 V lithium battery bank 2 x MASTERVOLT MLI Ultra 12/2750 12 V/200 Ah (new 2021)
- Total of eight solar panels on coachhouse and doghouse roof
- Hot water diesel heating
- Air conditioning CLIMMA CWS
- Watermaker Enwa MT 5500 230 l/h
- Hot water boiler 75 l
- Three electric toilets TECMAR with 3 x stainless steel holding tank 75 l incl. deck connection and sea discharge
- LED interior lighting with dimmer
- Blue LED interior courtesy lighting
- LED navigation lights

Navigation/Electronics

- 8 x RAYMARINE i70 instrument display (6 x above companionway, 1 x at helm, 1 x at chart table)
- Steering compass
- RAYMARINE e125 HybridTouch multifunction display at helm
- RAYMARINE e165 HybridTouch multifunction display next to companionway
- Autopilot RAYMARINE SPX30 with Mamba-drive 24 V and two control units p70
- Radio remote control RAYMARINE Smartcontrol
- 2 x GPS receiver RAYMARINE Raystar 130
- AIS Class B-transponder RAYMARINE AIS650
- Radar antenna RAYMARINE Super HD Color (open scanner antenna) on mast at stern
- VHF-radio RAYMARINE Ray218E Dual
- SSB-transceiver ICOM IC-M801
- R[&]R Combi antenna HAWAII 3G (3G/UKW/SSB/AM/FM)
- Satellite TV-antenna KVH TracVision TV5 on antenna mast at stern
- TV LOEWE 40" on electric lift in backrest of central bench seat in saloon
- Satellite communication SAILOR 250 FleetBroadBand on antenna mast at stern
- Radio/CD/DVD-Player ALPINE with speakers in saloon and cockpit speakers
- WEMPE clock and barometer/thermometer/hygrometer

Safety

- Lifteraft VIKING 8 pers. in container
- JONBUOY rescue module on pushpit
- Jack stays on running decks and padeyes for lifebelt in cockpit
- Signal horn Aquasignal below first spreader
- Emergency button on transom for opening the swim platform from the water
- Bilge alarm
- Automatic fire extinguisher system in engine compartment
- Fire extinguisher
- Lightning protection system
- Active radar reflector Echomax Active-XS
- Safe in owner's cabin

Accessories

- Dinghy CARIBE L8
- Canvas cover for cockpit table and instrument console
- Stern anchor gear: DELTA-anchor 25 kg with 50 m lead line
- Fenders
- Mooring lines

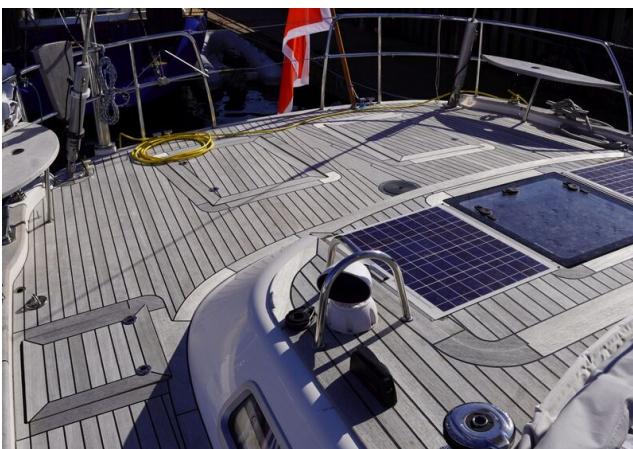
Brokerage Liability Disclaimer

All information especially regarding the VAT-status of a yacht has been supplied by third parties. It is non-binding and without guarantee, subject to error and alteration. Our brokerage relies exclusively on information supplied by the vendor carefully compiled and checked by us to the best of our knowledge. Hence, a liability for correctness and completeness of provided information cannot be assumed.

IMAGES



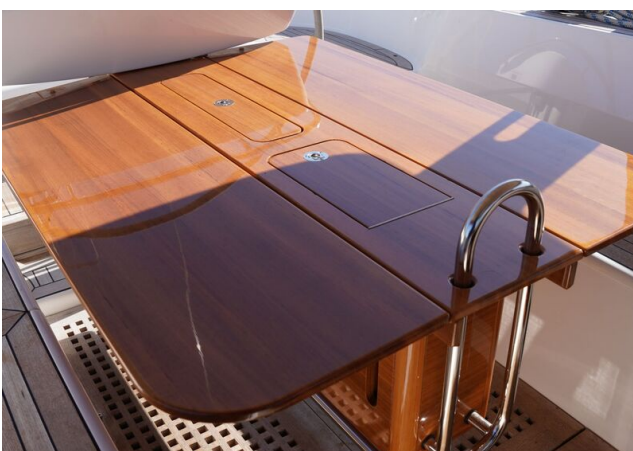
IMAGES



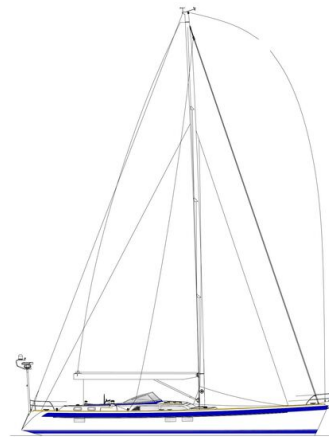
IMAGES



IMAGES



IMAGES



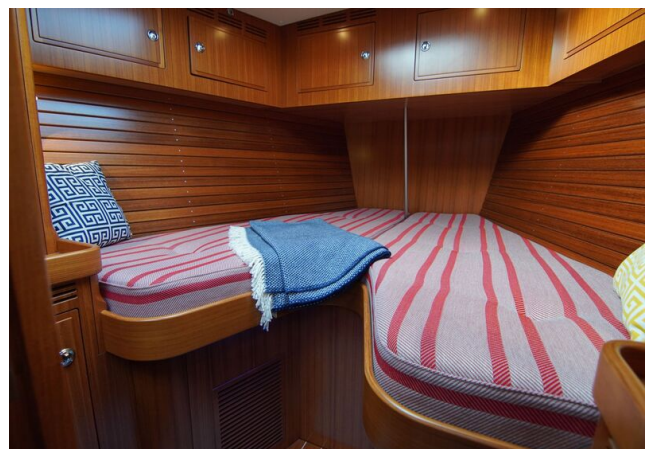
IMAGES



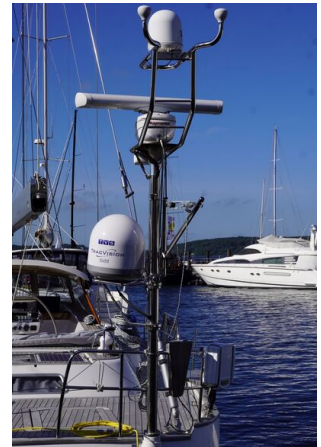
IMAGES



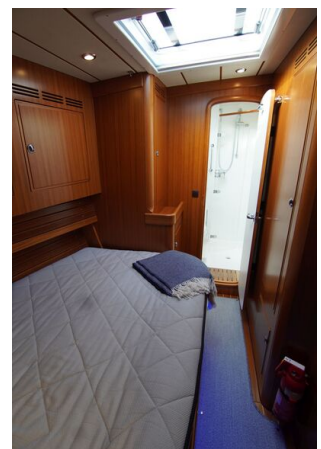
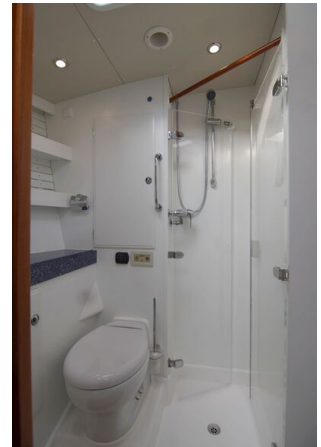
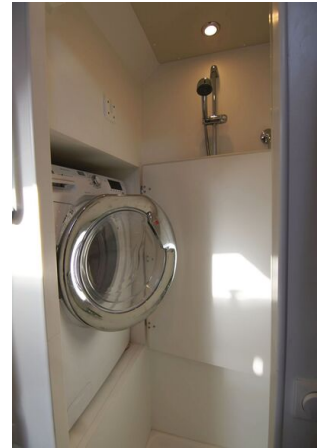
IMAGES



IMAGES



IMAGES



IMAGES

