



# GRAND SOLEIL 45

Year 2004



DIAMOND

DIAMOND Yachts, Yachtzentrum Baltic Bay  
Börn 17 | 24235 Laboe

# GRAND SOLEIL 45



**Boat sold.**

## Main Info

<b>Model</b>	Grand Soleil 45
<b>Manufacturer</b>	Cantiere del Pardo (ITA)
<b>Designer</b>	judel/vrolijk & co.
<b>Category</b>	Performance-Cruiser
<b>Year</b>	2004
<b>Location</b>	Côte d'Azur/Südfrankreich
<b>Flag</b>	Germany
<b>VAT status</b>	EU-VAT paid
<b>Material</b>	GRP
<b>Rig</b>	Sloop with carbon mast
<b>Cabins</b>	3
<b>Berths</b>	6

## Dimensions & Material

<b>LOA</b>	13.90 m
<b>LWL</b>	12.00 m
<b>Beam</b>	4.26 m
<b>Draft</b>	2.30 m
<b>Displacement</b>	9.6 t
<b>Sail area</b>	119 m <sup>2</sup>
<b>Engine</b>	YANMAR 4JH4E
<b>Power</b>	54 PS/40 KW
<b>Drive</b>	Saildrive with folding propeller
<b>Fresh water</b>	400 L
<b>Fuel</b>	230 L
<b>Holding tank</b>	45 L

## Key Facts

- Carbon mast by Southern Spars.
- Excellent performance.
- Diesel generator 4 KW.
- Folding swim platform.
- Carbon fibre Park Avenue-boom.
- Retractable bow thruster.
- Teakdeck all over.
- Electric winches.

## Description

The Grand Soleil 45 is a strong and fast performance cruiser with elegant lines. The low freeboard, a slim coachhouse profile and tidy, uncluttered decks make the yacht a spectacular eye-catcher. The Grand Soleil models designed by the German architect judel/vrolijk [&] co. marked the beginning of a new construction method at the italian yard Cantieri del Pardo: A galvanised steel frame is integrated into the hull to accommodate the loads of rigging, mast base and keel. This strongback makes the Grand Soleil 45 J[&]V a very stiff monolithic structure. Despite her excellent performance, the Grand Soleil 45 J[&]V is a safe well-natured touring yacht that can easily be handled by a small crew. 3 cabin-layout with two heads, mahogany interior (Patrick Roseo interior design) and laminated floorboards. This Grand Soleil 45 is a very well maintained and fully equipped second-hand owner's yacht. The yacht sailed in the Baltic Sea until 2018 and has been in indoor winter storage every year.

Highlight in her specification is a Southern Spars carbon fiber mast with carbon fiber Park Avenue boom retrofitted in 2011. Numerous investments and useful modifications such as electric seacocks, partial renewal of the domestic electric system incl. combined inverter/charger, anchor rocker (mooring gear and bow fitting disappear completely in the anchor locker and leave a completely uncluttered foredeck) etc.

Extensive specification with exclusive sail wardrobe by NORTH-Sails incl code-0 and ...

## Rig/Sails

- Keel stepped, 9/10-fractional white painted carbon fiber mast by Southern Spars (new 2011)
- Two sets of aft swept spreaders
- LED spreader lights
- White painted carbon fiber Park Avenue-boom by Southern Spars (new 2011) with mainsail cover and Southern Spars kicker
- LED Cockpit lights in boom
- Standing rigging in rod
- HOLMATRO hydraulic system for backstay (two cylinders with central control panel in cockpit)
- RECKMANN genoa furler with drum below decks
- Spectra halyards
- White painted carbon fiber spinnaker pole
- Full batten mainsail NORTH-Sails 3DL Marathon approx. 57 m<sup>2</sup> (new 2011) with lazy jacks
- HARKEN track and car system for mainsail
- Furling genoa NORTH-Sails 3DL Marathon approx. 43 m<sup>2</sup> (new 2011)
- Gennaker NORTH-Sails A2 approx. 140 m<sup>2</sup> (new 2011)
- Code-0 NORTH-Sails Racing Norlam approx. 100 m<sup>2</sup> (new 2011) with furling system
- Gennaker deck gear

## Deck

- Teak deck on running decks, coach house roof and in cockpit
- Folding swim platform with swim ladder and stern shower hot/cold
- Manual stainless steel anchor rocker (anchor and anchor fitting disappear completely in anchor locker)
- Electric anchor windlass
- Mooring gear: Stainless steel DELTA anchor 16 kg and 50 m stainless steel anchor chain
- Electric genoa winches HARKEN 53.2STE
- Electric coach house winch HARKEN 46.2STE to port
- German mainsheet system with mainsheet winches HARKEN 48.2ST
- HARKEN genoa tracks with ball bearing genoa cars adjusted from cockpit
- White-painted JEFA carbon fiber steering wheel
- Stainless steel console for chartplotter and bow thruster control panel at helm station
- Folding cockpit table in teak and stainless steel
- Sprayhood
- Bimini for helm station
- Railing in Dyneema instead of steel wire
- Gate in railing to starboard
- Bow ladder
- Folding NOMEN spring cleats
- Outboard engine bracket on pushpit

## Interior/Layout

- 3 Cabin layout with mahogany interior
- Saloon with U-shaped dinette around a large saloon table to port and sofa to starboard (all upholstery in Alcantara, color: off white)
- Forward facing chart table with navigator seat to starboard
- L-shaped galley to port aft
  - Worktop in white CORIAN
  - Gas stove (3 burners and oven)
  - Double sink
  - Refrigerator 120 l
- Owner's cabin with island double berth, seats, locker and additional hanging lockers on hull sides
- En-suite owner's heads with shower separation and electric toilet
- Symmetric aft cabins with double berth, locker, deck hatch and two opening portlights
- Second heads compartment to starboard aft with electric toilet

## Technical Equipment

- YANMAR 4JH4E 4 cylinder inboard diesel 54 hp/40 KW
- Saildrive with 3-bladed folding propeller Flex-o-Fold
- Stainless steel diesel tank approx. 230 l
- Retractable bow thruster MAXPOWER VIP150 with separate battery 12 V/105 Ah
- Diesel generator Fischer Panda 4 KW (operating hours: 82 h in September 2019)
- 230 V shore power connection with 230 V sockets below decks
- Combined battery charger and inverter VICTRON Multi Plus 12 V/3.000 W/120 A
- 4 service batteries 12 V/105 Ah
- Starter battery 12 V/105 Ah
- PHILIPPI charge monitor and 230 V monitor
- Diesel heater WEBASTO
- LED navigation lights LOPOLIGHT
- Electric seacocks by VETUS

## Navigation/Electronics

---

- RAYMARINE navigation instruments:
  - ST60 log (no water temperature display)
  - ST60 depth sounder
  - ST60 wind
- Compass
- Autopilot RAYMARINE ST6001
- GPS/chartplotter RAYMARINE E120 at chart table
- Second chartplotter RAYMARINE E80 in stainless steel console at helm station
- AIS-transponder
- VHF-radio FURUNO FM-2721
- MRD60 weather decoder
- ALPINE radio/CD-player with two speakers in saloon and two cockpit speakers
- TV SAMSUNG with manual lift in saloon to starboard

### Accessories

- Folding, white painted carbon fiber gangway
- Outboard engine JOHNSON 6 hp
- Mobile 230 V air conditioning system KLINDO 1.100 W
- Cockpit cushions
- Sun awning
- Canvas sleeve for furling genoa
- Canvas cover for helm console
- Fenders
- 4 mooring lines

### Brokerage Liability Disclaimer

All information especially regarding the VAT-status of a yacht has been supplied by third parties. It is non-binding and without guarantee, subject to error and alteration. Our brokerage relies exclusively on information supplied by the vendor carefully compiled and checked by us to the best of our knowledge. Hence, a liability for correctness and completeness of provided information cannot be assumed.



## Safety

---

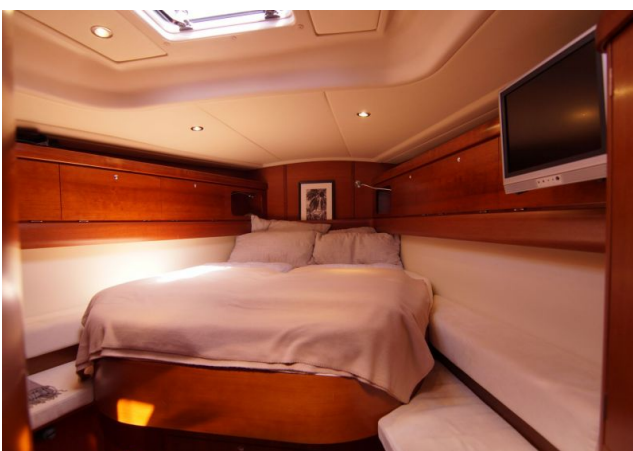
- Liferaft 6 pers.
- Manual and electric bilge pump
- Fire extinguisher

## IMAGES





## IMAGES



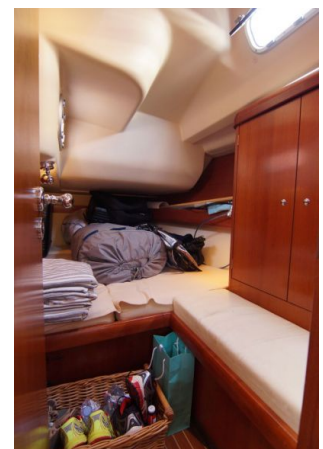
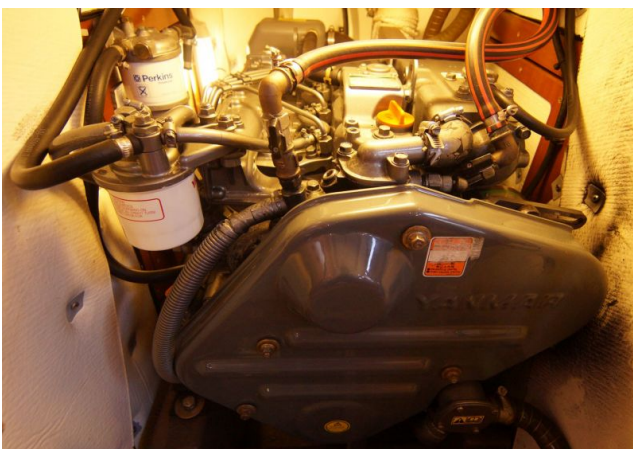


## IMAGES





## IMAGES



## IMAGES

