



# GRAND SOLEIL 40 B&C

Year 2007



DIAMOND Yachts, Yachtzentrum Baltic Bay  
Börn 17 | 24235 Laboe

# GRAND SOLEIL 40 B&C



**Boat sold.**

## Main Info

<b>Model</b>	Grand Soleil 40 B&C
<b>Manufacturer</b>	Cantiere del Pardo (ITA)
<b>Designer</b>	Botin & Carkeek Yacht design
<b>Category</b>	Performance cruiser
<b>Year</b>	2007
<b>Location</b>	Sardinien/Italien
<b>Flag</b>	Germany
<b>VAT status</b>	EU-VAT paid
<b>Material</b>	GRP
<b>Rig</b>	Sloop
<b>Cabins</b>	3
<b>Berths</b>	6

## Dimensions & Material

<b>LOA</b>	12.55 m
<b>LWL</b>	11.74 m
<b>Beam</b>	3.85 m
<b>Draft</b>	2.40 m
<b>Displacement</b>	7.8 t
<b>Sail area</b>	94 m <sup>2</sup>
<b>Engine</b>	VOLVO PENTA D2-40
<b>Power</b>	40 PS/29 KW
<b>Drive</b>	Saildrive with folding propeller
<b>Fresh water</b>	360 L
<b>Fuel</b>	180 L

## Key Facts

- Contemporary Botin & Carkeek design.
- Grand Soleil 40 in 3 cabin layout.
- Harken racing deck gear.
- IRC Racing keel.
- Engine upgrade VOLVO PENTA D2-40.
- Outstanding performance.
- Strongback in steel.
- IRC-Racing rig.

## Description

Fast, elegant performance cruiser built by Cantiere del Pardo in Italy. The Grand Soleil 40 by Botin [&] Carkeek Yacht design is characterised by her modern, elegant and no-frills design. Tidy, uncluttered decks, a vertical bow and the sleek, angular coachhouse make the yacht an eye-catcher both under sail and in the marina. A high 3 spreader mast, deep and effective appendixes and the modern hull design provide superior performance and fun on the water. The Grand Soleil 40 is not only fast, she is also an easy and safe sailing yacht. Stiff and torsion-free construction with strongback in galvanized steel to accommodate the loads of keel, mast and shrouds. Well equipped owner's yacht. 3 cabin layout with two heads compartments and mahogany interior. Grand Soleil 40 with IRC Racing lead keel (draft: approx. 2.40 m), IRC Racing rig and engine upgrade to VOLVO PENTA D2-40. The interior is in very good condition. Extensive and exclusive deck fittings with HARKEN racing deck gear (German mainsheet system with mainsheet winches, line-adjustable, ball-bearing genoa sheeting points, inhaulers for genoa sheets and all blocks in HARKEN Black Magic).

## Rigging/Sails

- Keel-stepped, 9/10 fractional IRC Racing mast by SPARCRAFT
- Three sets of aft-swept spreaders
- Standing rigging in rod
- Running rigging in Dyneema (new 2019)
- Hydraulic backstay tensioner HOLMATRO
- Genoa furling system with drum below decks
- Mainsail Pentex approx. 50 m<sup>2</sup>
- Ball bearing sliders for mainsail
- Lazy jacks and lazy bag (new 2020)
- Furling genoa Pentex approx. 48 m<sup>2</sup> with UV-protection
- Spinnaker

## Deck

- Teak on running decks, swim platform and in cockpit
- HARKEN Racing deck gear
  - HARKEN Black Magic blocks
  - Upgraded winches
  - Genoa tracks with ball bearing cars
  - Spinnaker deck fittings
  - Spinnaker gear
  - Inhaulers for genoa sheets
- Genoa winches HARKEN 53.2STA
- German mainsheet system with mainsheet winches HARKEN 48.2STA
- Coachhouse winches HARKEN 44.2STA
- Sprayhood with opening centre window
- Electric anchor windlass QUICK 1.000 W below deck with remote control in cockpit
- Mooring gear: DELTA-anchor 16 kg and 50 m anchor chain 10 mm
- Large self-draining anchor locker
- Removable teak cockpit table
- Cockpit shower hot/cold
- Swim ladder
- Outboard engine bracket on pushpit

## Layout/Interior

- 3 cabin layout with two heads compartments
- Mahogany interior (interior design: Patrick Roséo)
- Saloon with U-shaped dinette to starboard and central bench seat at saloon table
- Longitudinal galley to port
  - Worktop in white Corian
  - Gas stove (2 burners and oven)
  - Double sink
  - Large electric cool box
- Forward facing chart table with navigator's seat to starboard aft
- Spacious forward owner's cabin with island double berth, locker, storage compartments and two deck hatches
- Owner's heads forward to starboard with folding shower separation and electric toilet
- Second heads compartment aft to port
- Two symmetrical aft cabins with double berth, locker, deck hatch and additional opening hatch to cockpit
- LED interior lighting

## Technical Equipment

- VOLVO PENTA D2-40 4 cylinder inboard diesel 40 hp/29 KW
- Saildrive with 3 blade folding propeller Flex-o-Fold
- 230 V shore power connection with charging cable
- Battery charger QUICK 12 V/60 A
- Inverter 12 V/230 V/1.000 W
- Solar panel on coachhouse roof with Victron charge controller
- 12 V and 230 V sockets below decks
- Three service batteries 12 V/100 Ah (new 2019)
- Starter battery 12 V/100 Ah (new 2019)
- Electric toilet in owner's heads

## Navigation/ Electronics

- RAYMARINE instruments above companionway:
  - ST60+ Tridata (log and depth sounder)
  - ST60+ Wind
- Autopilot RAYMARINE ST6002
- GPS/chartplotter RAYMARINE A80 at helm
- VHF-radio RAYMARINE Ray54E with external speaker
- Compass
- TV LCD screen in saloon at main bulkhead
- Radio/CD/DVD-player SONY with two speakers in saloon and two cockpit speakers

## Safety

- Life raft 10 pers. in container (needs service)
- Life belt
- Fire extinguisher
- Gas alarm
- Fire alarm in engine compartment
- Manual and electric bilge pump

### Accessories

---

- Dinghy inflatable ZODIAC Cadet 230 Aero (new 2017)
- Electric outboard engine TORQEEDO Travel 503S (new 2017)
- Folding carbon fibre gangway
- Steering wheel cover
- Fenders
- Mooring lines

---

#### Brokerage Liability Disclaimer

All information especially regarding the VAT-status of a yacht has been supplied by third parties. It is non-binding and without guarantee, subject to error and alteration. Our brokerage relies exclusively on information supplied by the vendor carefully compiled and checked by us to the best of our knowledge. Hence, a liability for correctness and completeness of provided information cannot be assumed.



## IMAGES



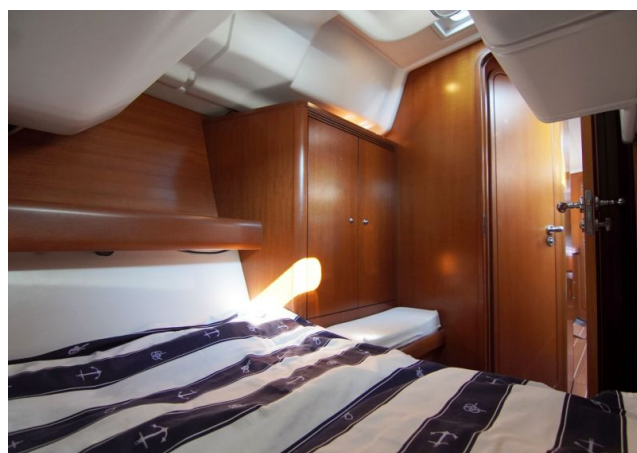
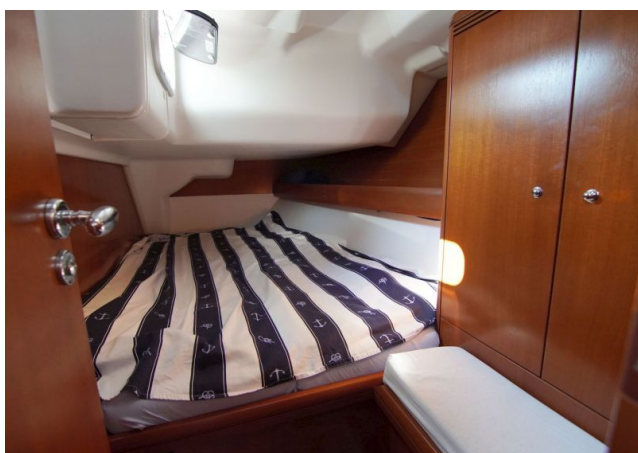


## IMAGES



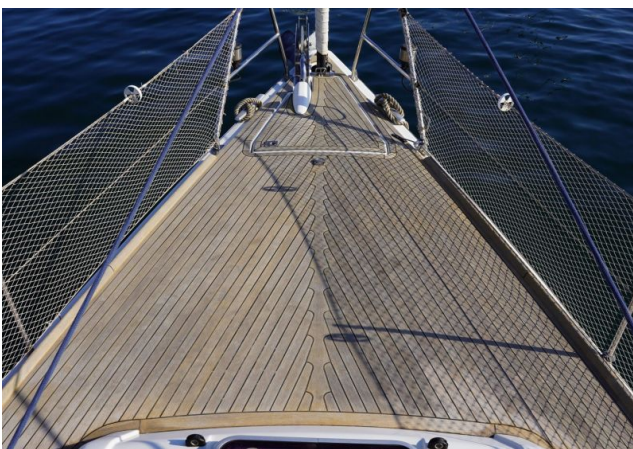


## IMAGES



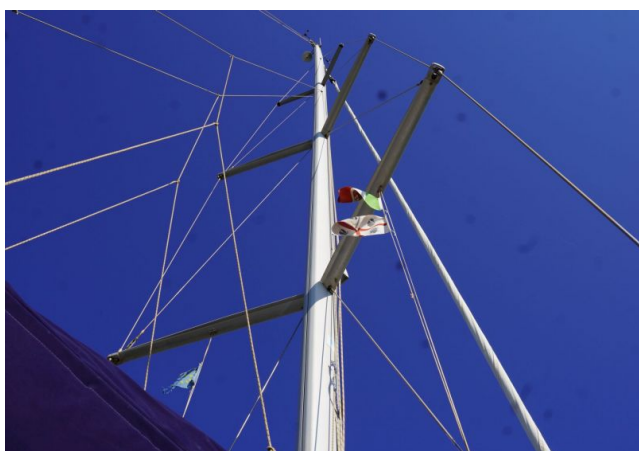
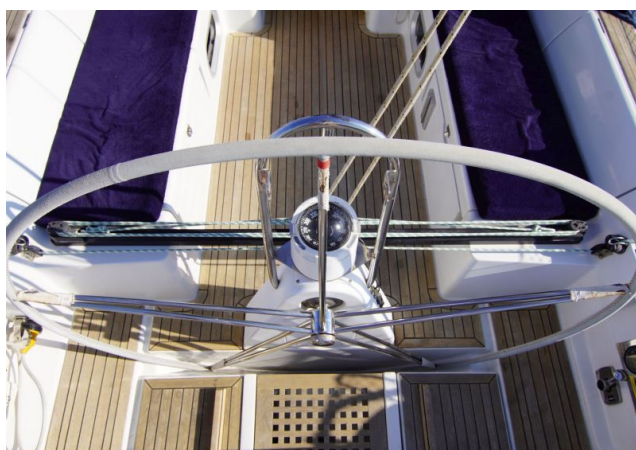


## IMAGES





## IMAGES





## IMAGES

