



GENTLY 36 SPORT HT

Year 2010



DIAMOND Yachts, Yachtzentrum Baltic Bay
Börn 17 | 24235 Laboe

GENTLY 36 SPORT HT



Main Info

Model	Gently 36 Sport HT
Manufacturer	Serious Yachts (NED)
Designer	Arnold de Ruyter
Category	Steel displacement yacht
Year	2010
Location	Neuenburgersee/Schweiz
Flag	ch
VAT status	excl. VAT
Material	Steel
Cabins	1
Berths	4

Dimensions & Material

LOA	11.00 m
LWL	10.66 m
Beam	3.80 m
Draft	1.10 m
Displacement	12.5 t
Engine	VETUS DEUTZ DT44
Power	114 PS/84 KW
Drive	Shaft drive
Fresh water	540 L
Fuel	460 L
Holding tank	120 L

Key Facts

- Dutch boatbuilder's quality.
- Bow and stern thruster.
- Classic, sturdy design.
- Diesel generator.
- Lithium service battery.
- TV satellite antenna.
- Davits and dinghy.
- Teak interior.

Description

Stylish, modern classic with sturdy lines, flared bow and an characteristic angular pilothouse. The Serious Yachts models stand out pleasantly from the uniform standard design of Dutch steel displacement yachts and are individually tailored to the owner's personal ideas. The Gently 36 Sport HT is the shipyard's smallest model and offers a remarkable amount of living space and comfort in her large cockpit, the bright wheelhouse and the exclusive teak-finished interior. All steel welding work, the carefully executed technical installations and the expertly crafted wooden interior meet the high standards of Dutch boatbuilding. The yacht's most striking features include the hull paintwork in "Cranberry Red", the high-gloss varnished teak windscreen frame and wheelhouse doors and the round lateral portholes. This particular yacht is a very well maintained, private yacht offered by her first owner. The Gently 36 Sport HT was sailed exclusively on fresh water, spent every winter in indoor storage and underwent regular technical maintenance and service. Extensive specification including bow and stern thruster, diesel generator, davits, electro-hydraulic folding mast to reduce the clearance of the yacht, TV satellite antenna, diesel heating, cockpit bimini and complete RAYMARINE navigation. The yacht comes with a beautiful, hand-built sailing dinghy made by the Italian yard "Colombo Leopoldo". The Gently 36 Sport HT is in indoor storage at Lake Neuchâtel and can be viewed by ...

Deck

- Spacious cockpit with two L-shaped benches and storage lockers underneath
- Teak deck on cockpit floor, cockpit seats and swim platform
- Two sturdy cockpit tables in teak and stainless steel
- Electric anchor windlass VETUS Napoleon 1.000 W
- Mooring gear: Stainless steel CQR-anchor with 30 m stainless steel anchor chain 8 mm
- Eight stainless steel mooring bollards
- Two stainless steel spring cleats and two additional bollards on swim platform
- Stainless steel profile on rubbing strakes on hull sides
- Stainless steel chafing protection rails on mooring cleats fore and aft
- Stern exit door to swim platform
- Swivelling, painted aluminium davits on coaming at transom
- Swim ladder
- Hot/cold stern shower
- Electric deck washing pump
- Stainless steel access ladder for bow and stern
- Cockpit bimini

Hardtop/Mast

- Windscreen frame in high-gloss varnished teak
- Two electric windscreen wipers
- Electric clear view screen in central windscreen
- Wheelhouse doors in high-gloss varnished teak
- Two hatches in wheelhouse roof
- LED cockpit lighting aft in wheelhouse roof
- Electro-hydraulic folding aluminium mast painted in white with spreaders and two spreader lights

Technical Equipment

- VETUS DEUTZ DT44 4-cylinder turbo diesel 114 hp/84 KW
- Engine hours (as of October 2024): 975 h
- Shaft drives with 4 blade propeller
- HYDRONAUTICA EMC system with electronic throttle
- Two stainless steel diesel tanks with total capacity of approx. 460 litres
- Hydraulic steering
- Bow thruster VETUS 95 kgf with 2 separate batteries
- Stern thruster VETUS 95 kgf
- 230 V shore power connection with charging cable
- 230 V sockets below deck
- Combined battery charger and inverter MASTERVOLT Mass Combi 12 V/2.500 W/100 A
- Starter battery OPTIMA 12 V/50 Ah
- Lithium service battery MASTERVOLT MLI Ultra 12/6000 (new 2022)
- MASTERVOLT Whisper 3,5 KW diesel generator with separate starter battery
- ISOTEMP hot water boiler
- Diesel heater WEBASTO Air Top Evo 5500
- Electric toilet with fresh water flushing and holding tank approx. 120 l
- Grey water tank approx. 120 l
- LED navigation lights

Layout/Interior

- Beautiful and carefully finished interior in silk-varnished teak with teak floor boards and white-varnished panelling on hull sides
- Bright, spacious wheelhouse with 360° panorama
- LED interior lighting with dimmers
- Raised helm station to port with instrument console and pilot seat
- L-shaped bench seat in wheelhouse to starboard aft with folding backrest to cockpit
- Companionway stairs to forward saloon with LED ambient lighting
- U-shaped dinette in saloon to port forward with electric height-adjustable saloon table
- Dinette converts into a double berth by lowering table and adding an extra cushion
- L-shaped galley to starboard forward
 - Sink
 - WEBASTO diesel cooker
 - Oven/microwave 230 V
 - Refrigerator
 - Storage space in cupboards and shelves
- Cabin forward with two berths, locker, storage compartments, hanging lockers and deck hatch
- Heads compartment to starboard with sink, electric toilet and shower
- Six portholes in hull sides
- Two stainless steel Dorade vents on forward coachhouse roof

Navigation/Electronics

- GPS/chartplotter RAYMARINE C90
- RAYMARINE ST60+ Tridata (log and echo sounder)
- GPS-receiver and transducer for log and echo sounder
- RAYMARINE ST60+ rudder angle indicator
- Tacktick Micronet MN30 wind indicator
- Autopilot RAYMARINE ST6002
- VHF-radio RAYMARINE Ray240E
- LCD TV-screen in saloon on bulkhead
- BOSE sound system with subwoofer and two speakers in saloon
- RAYMARINE TV satellite antenna
- Clock, barometer, thermometer/hygrometer

Safety

- Fire extinguisher
- Automatic fire extinguishing system in engine compartment
- Signal horn
- Electric and manual bilge pumps
- 2 manual searchlights

Accessories

- Dinghy: Colombo Leopoldo Dinghy 10P in high-gloss varnished cedar wood and mahogany with mast, sail, centreboard and rudder
- Sun protection covers for all deckhouse windows
- Cockpit cover
- Fenders
- Mooring lines

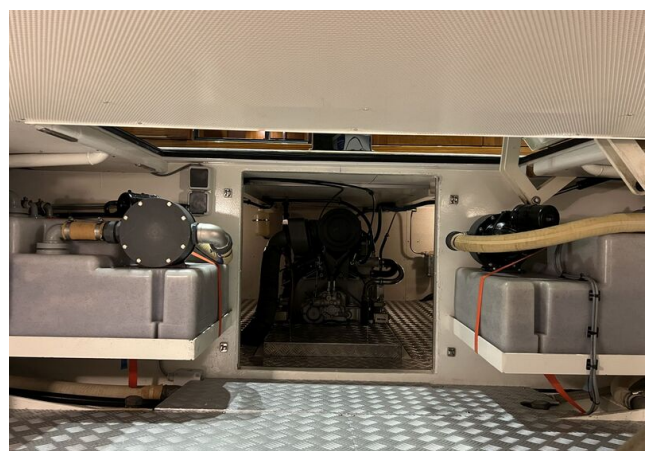
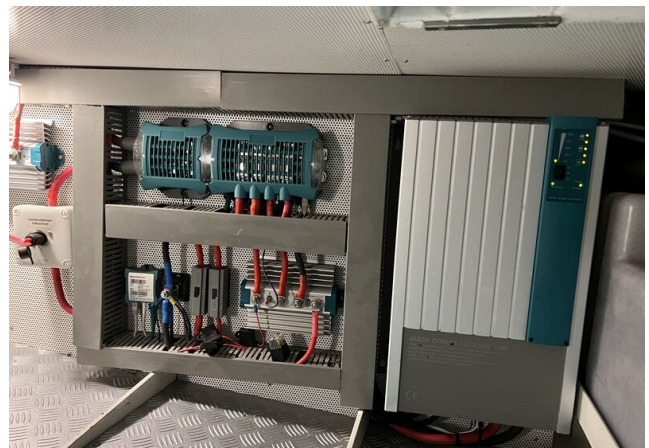
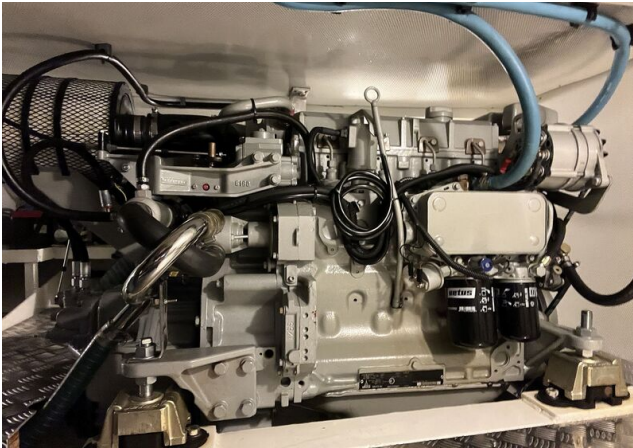
Brokerage Liability Disclaimer

All information especially regarding the VAT-status of a yacht has been supplied by third parties. It is non-binding and without guarantee, subject to error and alteration. Our brokerage relies exclusively on information supplied by the vendor carefully compiled and checked by us to the best of our knowledge. Hence, a liability for correctness and completeness of provided information cannot be assumed.

IMAGES



IMAGES



IMAGES

