



BAVARIA C57 STYLE

Year 2018



DIAMOND Yachts, Yachtzentrum Baltic Bay
Börn 17 | 24235 Laboe

BAVARIA C57 STYLE



Main Info

Model	Bavaria C57 Style
Manufacturer	Bavaria Yachtbau GmbH (GER)
Designer	Cossutti Yacht Design
Category	Cruiser
Year	2018
Location	Deutsche Ostseeküste
Flag	de
VAT status	VAT deductible
Material	GRP
Rig	Sloop with furling mast
Cabins	4
Berths	8

Dimensions & Material

LOA	16.67 m
LWL	15.62 m
Beam	5.28 m
Draft	2.50 m
Displacement	19 t
Sail area	136 m ²
Engine	YANMAR 4JH110
Power	110 PS/81 KW
Drive	Shaft with folding propeller
Fresh water	635 L
Fuel	500 L
Holding tank	280 L

Key Facts

- Electric genoa furling system.
- 4 cabin-layout with 4 heads.
- Bow and stern thruster.
- Light oak interior.
- High-quality sail wardrobe.
- Crew cabin in sail locker.
- VAT can be deducted.
- Very good condition.

Description

The Bavaria Cruiser 57 marks the start of the relaunch of the 2017 cruiser series by the German yard Bavaria Yachtbau. Created in collaboration with their new house-designer Maurizio Cossutti, this flagship is a beacon in design and technology with a new, very elegant line: Modern hull with wide stern, chines and vertical stem, angular coach house with characteristic narrow window band, wide, comfortable cockpit and huge folding swim platform that is unrivalled in this class. Thanks to the routing of the halyards, sheets and controls to the winch consoles in front of the two helm stations, the self-tacking jib and the option to equip the Bavaria C57 with bow and stern thrusters and electric winches, this large yacht is easy and safe to handle, even for small crews. Another premiere for the yard in Giebelstadt is the vacuum infusion process used for hull and deck which provides the Bavaria C57 with lighter and more stable laminate. This Bavaria C57 is offered by her first owner and has been used exclusively for skippered coaching and incentive events. She has a See-BG licence (German association for marine professionals) including all necessary equipment. In addition to the comprehensive standard specification of the Bavaria Style-version this particular yacht has a long list of options: Retractable bow and stern thrusters, four electric winches, furling mast, complete teak deck, two diesel heaters and comprehensive B&G navigation including three plotters, radar, AIS etc. 4 ...

Rig/Sails

- Keel-stepped, 9/10-fractional SELDEN furling mast
- Two sets of aft-swept spreaders
- FURLEX 400E electric headsail furling system with drive below decks
- SELDEN hydraulic backstay tensioner
- Spreader lights (up) in lower spreaders (new 2024)
- Track with traveller for self-tacking jib on deck
- Genoa tracks with line-adjustable sheeting points
- Furling mainsail ELVSTRÖM EPEX FatFurl approx. 84 m² with vertical battens (new 2019)
- Furling genoa ELVSTRÖM EPEX approx. 73 m² (new 2019) with vertical battens and UV-protection
- Gennaker ELVSTRÖM approx. 230 m² on SELDEN top down furling system
- Code-0 ELVSTRÖM trioptimal approx. 140 m² on KARVER furling system
- Triesail ELVSTRÖM approx. 18 m²
- ELVSTRÖM storm jib approx. 18 m²
- The original set of sails ELVSTRÖM Dacron (furling mainsail, self-tacking jib, genoa 106 %) is available
- Gennaker gear

Deck

- Teak deck on running decks, coach house roof, swim platform and in cockpit
- Electric anchor windlass
- Mooring gear: Stainless steel DELTA-anchor 32 kg with 50 m stainless steel anchor chain 10 mm
- 2 x electric sheet winches LEWMAR EVO 65EST aluminium
- 2 x electric halyard winches LEWMAR EVO 65EST aluminium
- Sprayhood
- Bimini with side and aft panels and LED interior lighting
- Two helm stations with black composite sport steering wheels, stainless steel handrails and large consoles for navigation instruments
- LED courtesy lighting in cockpit and on steps to swim platform
- Two electric, height-adjustable cockpit tables (can be converted into a sunbed)
- Wetbar in aft cockpit with BBQ gas grill (never used), sink and fridge drawer
- Retractable SeaSmart mooring cleats and spring cleats amidships
- Teak rubing strakes rails with stainless steel profile on hull sides
- Stainless steel bow guard
- Spacious, electric folding swim platform with integrated steps on port side
- Large storage space for fenders and toys in stern behind swim platform
- Electric compressor for toys/fenders in stern storage compartment
- Life raft storage space to starboard behind swim platform
- Swim ladder (can also be used as side boarding ladder)
- Railing gates to starboard and port
- Cockpit shower hot/cold
- 4 x underwater lights (new 2024)
- Custom carbon fibre flagpole

Layout/Interior

- Bavaria C57 in 4-cabin layout with "Club Style" interior (light oak with floorboards in contrasting dark wenge)
- Spacious, bright saloon with U-shaped dinette to port around folding saloon table
- Saloon table with electric adjustment, can be converted into an additional berth
- Longitudinal sofa to port
- Forward-facing chart table with navigator seat and console for navigation instruments
- Open galley in front of saloon on both sides
 - Worktop in white synthetic stone
 - Double sink
 - Force10 gas stove (new 2023)
 - Extractor hood
 - Fridge (front loader)
 - Additional fridge (pull-out)
 - Freezer (pull-out)
 - Dishwasher
 - Microwave 230 V (new 2023)
 - Nesspresso machine
- Two symmetrical forward cabins with double berth, locker, deck hatch and hull window
- Two symmetrical forward heads compartments with sink and electric toilet
- Two symmetrical aft cabins with double berth incl. lee cloth, locker, deck hatch, hull window and opening hatch to cockpit
- Heads compartment to port aft with sink, separate shower and electric toilet
- Heads compartment to starboard aft with sink and electric toilet
- Crew cabin in sail locker below foredeck with berth, marine toilet and sink
- Venetian blinds for coach house windows and hull windows
- OCEANAIR blinds and mosquito screens in deck hatches
- LED interior lighting with ceiling spots and reading lamps
- Additional, LED ambient lighting with dimmer in saloon and cabins
- LED courtesy lighting in saloon and cabins
- Carpet in saloon and cabins

Technical Equipment

- YANMAR 4JH110 4 cylinder common rail turbo-diesel 110 hp/81 KW
- Electronic engine control with throttle at both helm stations
- Shaft drive with 3-blade folding propeller
- Engine hours (as of August 2024): 980 h
- Spacious, easily accessible engine compartment and additional technical compartment, separated by retrofitted bulkhead
- Retractable bow thruster SIDEPOWER with two separate AGM batteries 12 V/95 Ah (batteries new 2022)
- Retractable stern thruster SIDEPOWER with two separate AGM batteries 12 V/95 Ah (batteries new 2022)
- 230 V shore power connection with charging cable
- Additional 230 V shore power connection 32 A
- 230 V sockets in interior
- Battery charger MASTERVOLT Chargemaster Plus 12 V/100 A
- Inverter 12 V/230 V/2.000 W
- 4 x gel service battery 12 V/210 Ah
- AGM starter battery 12 V/95 Ah (new 2024)
- 2 x AGM batteries for electric winches 12 V/95 Ah
- 2 x WEBASTO 4 KW diesel heaters
- Hot water boiler 40 litres
- 4 x electric toilet with fresh water flushing and holding tank approx. 70 l each
- LED navigation lights

Navigation/Electronics

- BROOKS [&] GATEHOUSE Triton instrument system with transducers for log, echo sounder and wind
- 4 x B[&]G Triton instrument display in cockpit
- 2 x 9" B[&]G Zeus³ multifunctional displays at helm stations
- 12" multifunctional display B[&]G at chart table
- Autopilot B[&]G
- Steering compass at both helm stations
- SIMRAD 4G broadband radar antenna on mast (new 2024)
- AIS Class B-transponder B[&]G AIS400
- VHF radio B[&]G V50 and additional wireless unit H50
- GoFree WIFI module
- 40" flat screen TV with electric lift in saloon to starboard with TV aerial and Netflix
- Marine entertainment system FUSION MS-UD650 (FM/Bluetooth/USB-player) with FUSION speakers in saloon and cockpit
- FUSION MS-NRX200i remote control in cockpit

Safety

- Life raft 12 pers. in container
- JONBUOY rescue module on pushpit
- Lifesling
- Jackstays on deck
- Radar reflector on mast
- Electric and manual bilge pumps
- 12 V emergency battery as power supply for VHF in case of water ingress
- Fire extinguisher
- Automatic fire extinguishing system in engine compartment

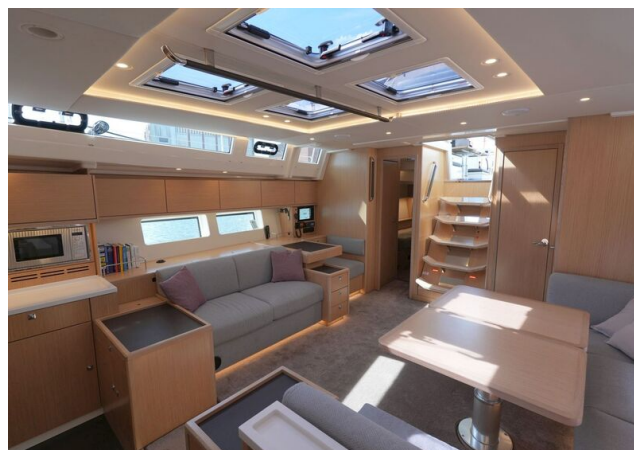
Accessories

- Canvas covers for cockpit tables, steering wheels and instrument consoles
- Cockpit cushions
- Cushions for stern bench
- Sunbed cushions for cockpit tables
- Sunbed cushions for foredeck
- Fenders
- Mooring lines

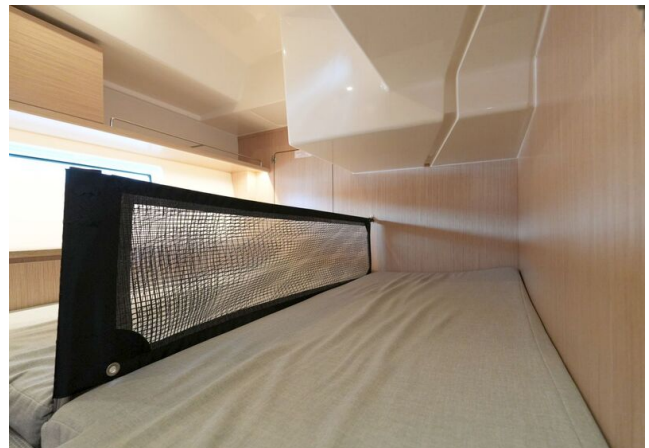
Brokerage Liability Disclaimer

All information especially regarding the VAT-status of a yacht has been supplied by third parties. It is non-binding and without guarantee, subject to error and alteration. Our brokerage relies exclusively on information supplied by the vendor carefully compiled and checked by us to the best of our knowledge. Hence, a liability for correctness and completeness of provided information cannot be assumed.

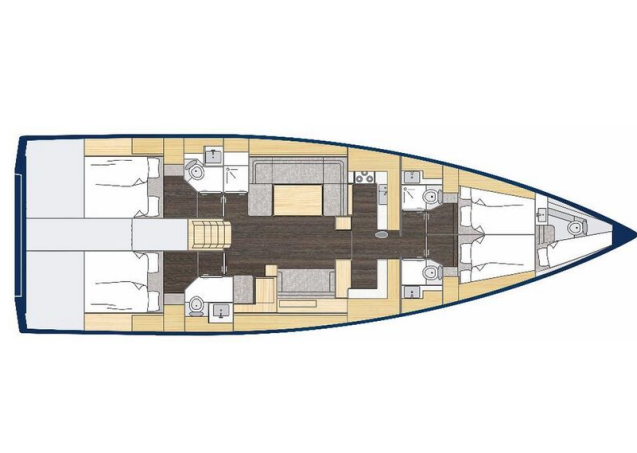
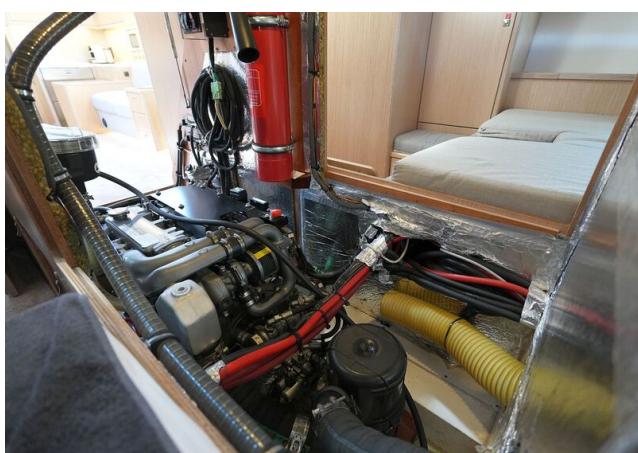
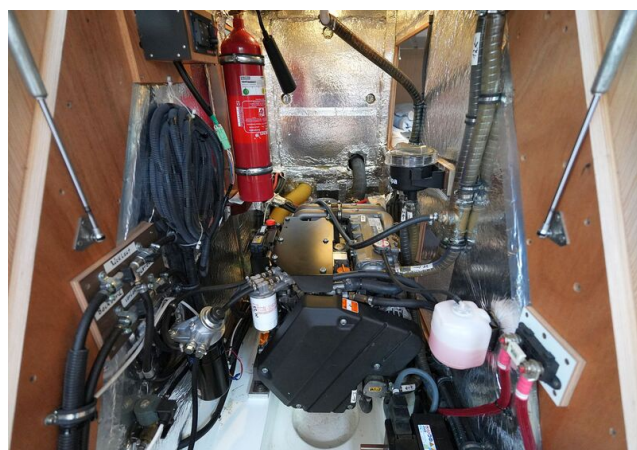
IMAGES



IMAGES



IMAGES



IMAGES

