



DUFOUR 44 PERFORMANCE

Year 2008



DIAMOND Yachts, Yachtzentrum Baltic Bay
Börn 17 | 24235 Laboe

DUFOUR 44 PERFORMANCE



Boat sold.

Main Info

Model	Dufour 44 Performance
Manufacturer	Dufour Yachts (FRA)
Designer	Umberto Felci
Category	Performance cruiser
Year	2008
Location	Kieler Förde
Flag	Germany
VAT status	EU-VAT paid
Material	GRP
Rig	Sloop with furling mast
Cabins	3
Berths	6

Dimensions & Material

LOA	14.10 m
LWL	12.00 m
Beam	4.35 m
Draft	2.30 m
Displacement	10.6 t
Sail area	110 m ²
Engine	VOLVO PENTA D2-55
Power	55 PS/40 KW
Drive	Saildrive with folding propeller
Fresh water	400 L
Fuel	230 L
Holding tank	45 L

Key Facts

- 3 cabin layout with longitudinal galley.
- Engine-upgrade VOLVO PENTA D2-55.
- Retractable bowthruster.
- Comprehensive inventory.
- Complete navigation electronics.
- KVH satellite TV-antenna.
- Teak deck all over.
- Mahogany interior.

Description

Fast, safe and comfortable cruiser built by the French production yard Dufour Yachts in La Rochelle. The modern lines from the drawing board of Italian designer Umberto Felci give the Dufour 405 Grand Large good performance while creating an amazing volume at the same time. At a total length of twelve meters, the yacht offers ample living space in three cabins, two heads compartments and a cozy saloon with a longitudinal galley (interior design: Patrick Roseo). Lots of light and air below decks through eight hull windows, seven deck hatches, dorade vents, portholes and large coachhouse windows. Wide cockpit with large cockpit table, two helm stations and free access aft to the folding swim platform. The clever concept and the balanced compromise between comfort and performance won the Dufour 405 GL the title "European Yacht of the Year 2010" in the very competitive category "Cruising Yachts". This Dufour 405 Grand Large is a little used, fully equipped owner's yacht (one owner from new and never chartered). Built in 2010 but launched in 2011. Numerous useful and clever modifications both on and below decks. Very comprehensive specification including retractable bow thruster, satellite TV antenna, teak deck all over, complete sail wardrobe including gennaker and code-0 and extensive inventory of lines, fenders, safety equipment, spare parts etc.

Rig/Sails

- Deck-stepped, 9/10-fractional Z-Spars mast
- Two sets of aft-swept spreaders
- Genoa furler FURLEX 300
- Spinnaker pole (stowed on mast)
- Aluminum protection for rigging screws
- Full-batten mainsail ELVSTRÖM approx. 36 m² with two reefs
- Lazy bag and lazy jacks
- Bullenstander
- Furling genoa I ELVSTRÖM approx. 45 m² with UV-protection
- Furling genoa III triradial approx. 33 m² (new 2017) with UV-protection
- Furling jib approx. 30 m² with high cut clew
- Gennaker triradial approx. 95 m² (new 2014) in snuffer
- Code-0 Tristar approx. 58 m² (new 2017) on furler
- Gennaker deck gear

Deck

- Teak deck on running decks, coach house roof, swim platform and in cockpit
- Electric anchor windlass QUICK 1.000 W with separate battery
- Mooring gear: DELTA-anchor 16 kg with 50 m anchor chain 10 mm
- Genoa winches LEWMAR 44.2ST
- Electrical halyard winch LEWMAR 32.2STE to port
- Large, folding swim platform with teak deck
- Swim ladder
- Cockpit shower hot/cold
- Sprayhood with additional grab rail
- Sprayhood extension
- Large folding cockpit table
- Deck lockers below cockpit seats and helmsman seats
- Liferaft storage compartment in cockpit floor
- Extended and reinforced pushpit with additional handlebars on transom
- Extended pulpit with teak step
- Gates in lifelines to starboard and port
- Spring cleats
- Teak rubbing strake with stainless steel profile on hull sides

Layout/Interior

- Saloon with U-shaped dinette and central seat on saloon table to port
- Four hull windows in saloon
- Longitudinal galley to port
 - Worktop in white CORIAN
 - Double sink
 - Gas stove (3 burners and oven)
 - Remote switch for gas valve
 - Big electric cool box 180 L
- Forward facing chart table and navigator seat to starboard aft
- Owner's cabin forward with island double berth (new mattress 2017), locker, two hull windows and deck hatch
- Owner's heads to port forward
- Two symmetric aft cabins with double berth, locker, hull window, porthole and deck hatch
- Second heads compartment to port aft with separate shower stall
- Interior in Moabi mahogany
- Carpet throughout the ship
- Oceanair blinds and mosquito screens in deck hatches
- Curtains for coachhouse windows and hull windows in cabins

Technical Equipment

- VOLVO PENTA D2-55 4 cylinder inboard marine diesel 55 hp/40 KW
- Engine hours: 620 h in September 2019
- Saildrive with 3-bladed folding propeller VOLVO PENTA
- Retractable bow thruster MAXPOWER with separate battery
- Diesel heater EBERSPÄCHER
- 230 V shore power connection with 230 V sockets in the interior
- Battery charger PHILIPPI 12 V/40A (new 2015)
- 3 service batteries 12 V/100 Ah
- Hot water boiler 20 l heats with 230 V heating element and heat exchanger on main engine
- Holding tank approx. 50 l for toilet in aft heads compartment
- LED interior lighting
- LED navigation lights

Navigation/Electronics

- Instruments: RAYMARINE ST70 multi-displays with transducers for log, echosounder and wind
- Autopilot RAYMARINE ST70 with wireless remote control RAYMARINE Smartcontrol
- Compass
- Chartplotter RAYMARINE c90w at cockpit table
- Marine-PC as chartplotter at chart table with keyboard, mouse, CD-drive and navigation software
- Radar antenna RAYMARINE on antenna mast at stern
- AIS-transponder Weatherdock
- VHF-radio SIMRAD RS25 with additional wireless handset
- VHF handheld ICOM
- Weather info box WIBE with Navtex and barometer
- Radio/stereo PIONEER AVH-2400BT with remote control and speakers in saloon and cockpit
- TV flat screen
- TV satellite antenna KVH TV-3 on antenna mast at stern
- External WLAN antenna

Safety

- Liferaft 6 pers.
- Lifesling
- Rescue buoy
- Four automatic lifejackets 270N incl. lifebelts (two with AIS transmitter)
- Distress signal kit
- Electric foghorn (BSH approved)
- Handheld 12 V spotlight
- Manual and 2 x electric bilge pumps
- Fire extinguisher

Accessories

- Dinghy (ZODIAC 260 inflatable)
- Sturdy winter cover in three pieces with support structure
- Stern anchor: BRUCE-anchor with chain and webbing on wheel
- Bow ladder
- Fenders
- Mooring lines

Brokerage Liability Disclaimer

All information especially regarding the VAT-status of a yacht has been supplied by third parties. It is non-binding and without guarantee, subject to error and alteration. Our brokerage relies exclusively on information supplied by the vendor carefully compiled and checked by us to the best of our knowledge. Hence, a liability for correctness and completeness of provided information cannot be assumed.

IMAGES



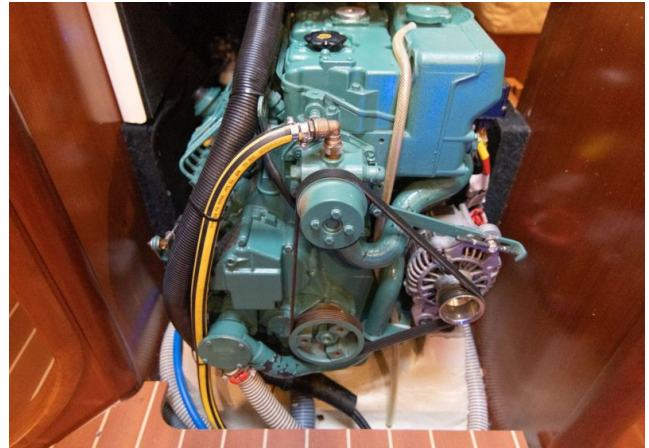
IMAGES



IMAGES



IMAGES



IMAGES

