



DARTSAILER 38

Year 1978



DIAMOND

DIAMOND Yachts, Yachtzentrum Baltic Bay
Börn 17 | 24235 Laboe

DARTSAILER 38



Main Info

Model	Dartsailer 38
Manufacturer	Holland Boat Company (NED)
Designer	Willem de Vries-Lentsch
Category	Motorsailer
Year	1978
Location	Baltic Bay-Marina/Laboe
Flag	Germany
VAT status	EU-VAT paid
Material	GRP
Rig	Ketch
Cabins	2
Berths	4

Dimensions & Material

LOA	11.50 m
LWL	9.60 m
Beam	3.75 m
Draft	1.40 m
Displacement	13 t
Sail area	58 m ²
Engine	PERKINS 6.354
Power	113 PS/83 KW
Drive	Welle
Fresh water	450 L
Fuel	450 L
Holding tank	70 L

Key Facts

- Sturdy motorsailer with inner helm station
- Bright wheelhouse with 360° panorama
- Hydraulic bowthruster
- Very good condition
- Ketch-rig

Description

Sturdy, seaworthy, ketch-rigged motorsailer built by the Dutch yard Holland Boat Company. Bright wheelhouse with inner helm station and 360° panorama. Solid, traditional interior in teak. Hull, deck, cockpit and the roof of the wheelhouse are made in GRP. The underwater paint incl. epoxy primer has been completely rebuilt in 2008. Very well maintained owner's yacht. Indoor storage every winter and numerous investments in recent years (galley new 2006, new helm station 2007, new chain plates 2007, electrics new in 2007, new hydraulic bowthruster in 2008, complete new water system in 2008, dual circuit cooling on engine new 2012 etc).

Rigging/Sails

- Ketch-rigged
- Deck stepped, top rigged, white main mast with one set of spreaders
- Deck stepped white mizzen mast with one set of spreaders
- FURLEX 200S genoa furler
- Spreader lights on main mast
- Sails: Mainsail BOHN-Sails burgundy approx. 20 m² (new in 2010)
- 2 reefs on ballbearing RONSTAN sliders
- Mizzen burgundy approx. 8 m²
- Furling genoa BOHN-Sails burgundy approx. 29 m² (new in 2012).

Deck

- Teak on running decks
- Wheelhouse roof
- Coachhouse roof and in cockpit
- Electric anchor windlass with anchor 25 kg and 50 m stainless steel anchor chain 10 mm
- ANDERSEN stainless steel winches
- Swim ladder
- 2 x windscreen wipers (new in 2012)
- Centrifugal disc in central front window
- Large hatch on wheelhouse roof

Layout/Interior

- Bright decksaloon with 360° panorama
- L-shaped dinette to starboard on folding saloon table and folding seats to port
- Inner helm position to port forward
- Large U-shaped galley to port of companionway with double sink
- Gas stove (2 burners, oven and electric remote switch for gas valve) and electric refrigerator
- Forward cabin with V-shaped double berth
- Spacious heads compartment to starboard with separate shower stall
- Quarter berth (as double berth) to starboard

Technical Equipment

- PERKINS 6.354 6 cylinder inboard diesel 113 hp/83 kw
- Shaft drive and 3-bladed fixed propeller
- Hydraulic VETUS bowthruster (new in 2008)
- 230 V shore power connection with battery charger MOBITRONIC 12 V/45 A (new in 2007)
- 3 x service battery 12 V/180 Ah
- Starter battery 12 V/180 Ah (all batteries new in 2012)
- Electric toilet (new in 2013)
- Diesel heating WEBASTO
- RHEINSTROM hot water boiler 130 l (new in 2006)
- Heated by heat exchanger on engine and 230 V heating element
- Stainless steel holding tank approx. 70 l with electric pump

Navigation/ Electronics

- Instruments: NEXUS NX Sea Data (log and echo sounder)
- NEXUS NX Wind (both new in 2013)
- VHF M-Tech MT-500 DSC (new in 2007)
- Autopilot VETUS Pilot
- Compass
- GPS/chartplotter SIMRAD CP40
- Clock
- Barometer

Safety

- Horseshoe
- Fire extinguisher
- Manual and electric bilge pump.

Accessories

- Boom covers
- Cover for furling genoa
- Fenders
- Mooring lines

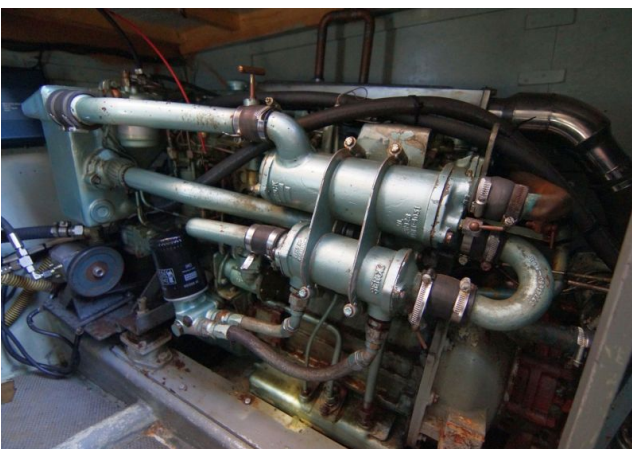
Brokerage Liability Disclaimer

All information especially regarding the VAT-status of a yacht has been supplied by third parties. It is non-binding and without guarantee, subject to error and alteration. Our brokerage relies exclusively on information supplied by the vendor carefully compiled and checked by us to the best of our knowledge. Hence, a liability for correctness and completeness of provided information cannot be assumed.

IMAGES



IMAGES



IMAGES

