



BENETEAU OCEANIS

55.1

Year 2018



DIAMOND Yachts, Yachtzentrum Baltic Bay
Börn 17 | 24235 Laboe

BENETEAU OCEANIS 55.1



Boat sold.

Main Info

Model	BENETEAU Oceanis 55.1
Manufacturer	Chantiers Bénéteau (FRA)
Designer	Berret Racoupeau Yachtdesign
Category	Sailing yacht
Year	2018
Location	Côte d'Azur/Südfrankreich
Flag	Netherlands
VAT status	EU-VAT paid
Material	GRP
Rig	Sloop with furling mast
Cabins	3
Berths	6

Dimensions & Material

LOA	16.78 m
LWL	15.16 m
Beam	4.96 m
Draft	2.30 m
Displacement	17 t
Sail area	106 m ²
Engine	YANMAR 4JH110
Power	110 PS/81 KW
Drive	Shaft with folding propeller
Fresh water	694 L
Fuel	600 L
Holding tank	160 L

Key Facts

- 3 cabins, 3 heads and crew cabin.
- Diesel generator ONAN 9,5 kVA.
- Electric winches.
- Airconditioning.
- Additional tanks for water and fuel.
- Delphinière (fixed bowsprit).
- Cutterstay with furler.
- Mahogany interior.

Description

Modern and very well equipped cruiser built by the French yard Chantiers BÉNÉTEAU. In a luxurious owner's cabin, two spacious aft cabins and the huge saloon the Oceanis 60 offers an unusual measure of living space and comfort for long journeys and extended stays on board. Plenty of air and light below decks thanks to numerous hull ports, large coachhouse windows, portholes, deck hatches and a panoramic window in the saloon roof. The Oceanis 60 has modern, tidy and spacious deck layout. The wide cockpit is divided into a rope-free guest area forward with comfortable seats and a large cockpit table and a sailing area aft. From the two helm stations the yacht can be operated practically one-handed. Spacious aft deck and tender garage behind the wide, electric opening swim platform. This Oceanis 60 is a fully kitted out, hardly used first-hand owner's yacht. Hull in blue-grey and Targa arch also painted in blue-grey. 3 cabin layout with three heads and optional skipper cabin in forepeak. Extensive technical specification including big diesel generator, airconditioning, bowthruster, four electric winches and complete BROOKS [&] GATEHOUSE navigation instruments (including a total of four chart plotters). The yacht is continuously maintained and serviced by a professional skipper.

Rigg/Sails

- Keel stepped, 9/10-fractional SELDEN mast
- Three sets of aftswept spreaders
- SPARCRAFT aluminum V-boom (new 2018)
- Genoa furler FACNOR
- Cutter stay with FACNOR furler
- Full battened mainsail NORTH-Sails approx. 88 m² triradial (new 2017) on MDS sliders
- Lazy jacks and lazy bag
- Furling genoa NORTH-Sails approx. 100 m² triradial (new 2017) with UV-protection
- Cutter jib NORTH-Sails approx. 48 m² triradial (new 2017) with UV-protection
- Code-0 NORTH-Sails on furling system (new 2017)
- Gennaker gear with 1:2 halyard for code-0/gennaker
- In addition the original set of sails (mainsail and furling genoa) is available

Deck

- Teak deck on running decks, swim platform and in cockpit
- Electric anchor windlass LEWMAR 24 V/2.000 W with remote control and chain counter in cockpit
- Mooring gear: Stainless steel DELTA-anchor with anchor chain 12 mm
- Delphinière (fixed bowsprit in stainless steel for gennaker and for holding the anchor)
- Electric deck wash pump
- 2 electric genoa winches HARKEN 70.2STCEH
- 2 electric maneuvering winches HARKEN 46.2STCEH
- Wide electric swim platform with radio remote control
- Tender garage below aft deck
- Two helm stations with white painted GRP steering wheels, large consoles for navigation instruments and helm seats
- Teak cockpit table with GRP base and swivelling console for chartplotter
- Targa arch for mainsheet (connection for sprayhood and bimini) with LED cockpit lighting
- Sprayhood
- Bimini
- Cockpit shower warm/cold
- Gates in lifelines to starboard and port
- Four spring cleats and four mooring cleats
- Additional mooring cleats at stern
- Swim ladder
- Outboard engine bracket on pushpit

Interior/Layout

- Oceanis 60 in 3 cabin layout with ALPI mahogany interior and optional crew cabin in forepeak
- Spacious, bright saloon with U-shaped dinette to starboard and central seat on folding saloon table
- Longitudinal sofa to port
- Electric blinds for coachhouse windows in saloon
- Forward facing chart table to starboard aft
- U-shaped galley to port
 - Worktop in white CORIAN
 - Double sink
 - Electric seawater pump
 - Fresh water filter
 - Gas stove (3 burners and oven)
 - Refrigerator 130 l
 - Electric cool box 100 l
 - Additional drinks fridge 95 l
 - Dishwasher ELEKTROLUX 230 V
 - Microwave 230 V
 - Extractor hood
- Luxurious owner's cabin forward with wide island double berth with slatted frame, lockers, storage compartments and vanity table
- Owner's heads compartment to port with separate shower and electric toilet
- Two aft cabins with double berths (bed in starboard aft cabin can be converted to single berths) and lockers
- Two guest heads with separate shower and electric toilet
- Skipper cabin in forepeak with bunk beds and electric toilet
- Safe
- Curtains for hull windows
- Blinds for deck hatches

Technical Equipment

- Volkswagen TDI 140-5 5 cylinder turbo diesel 140 hp/103 KW
- Shaft drive with 3-bladed folding propeller
- Line cutter on propeller shaft
- Optional additional diesel tank (total capacity: 600 l)
- Alternator 24 V/80 A
- Second alternator 12 V/120 A
- Tunnel bow thruster QUICK
- 230V shore power connection with 230 V outlets below decks
- Additional 230 V shore supply for airconditioning
- Battery charger 24 V/60 A
- Inverter 24 V/230 V/2.000 W
- Diesel generator ONAN 9,5 kVA
- 4 gel service batteries 12 V/140 Ah (total capacity: 24 V/280Ah)
- Starter battery 12 V/110 Ah and additional battery for navigation 12 V/110 Ah with second battery charger 12 V/25 Ah
- Airconditioning for saloon, all cabins and skipper cabin
- LED navigation lights
- LED interior lighting
- Additional fresh water tank 300 l (total capacity: 1.038 l)
- Fresh water dock connection
- Hot water boiler 60 l
- 4 x electric toilet
- 3 x holding tank 73 l for all three heads and 1 x 50 l for skipper cabin

Navigation/Electronics

- 2 x chart plotter BROOKS [&] GATEHOUSE Zeus 7 in consoles at helm stations
- Chart plotter BROOKS [&] GATEHOUSE Zeus 12 in swiveling console at cockpit table
- Multifunction screen BROOKS [&] GATEHOUSE 12" at chart table with remote control panel OP40
- Transducers for log, echosounder and wind
- 2 x steering compass
- Autopilot B[&]G AC42incl. gyro-sensor
- Remote control for autopilot B[&]G WR10
- Radar antenna B[&]G 4G at mast
- AIS-receiver
- VHF B[&]G RS90 with second wireless unit B[&]G H50
- WLAN module B[&]G
- PC-interface
- TV Flat screen 32" PHILIPS with electric lift in saloon
- Radio/CD/DVD-player FUSION MS-AV700
- Stereo sound system BOSE Acoustimass 3 in saloon
- Cockpit speakers

Safety

- Liferaft 6 pers.
- Lifejackets
- Manual and 2 x electric bilge pump
- Life collar
- Fireextinguishers

Accessories

- Dinghy (inflatable HIGHFIELD with outboard engine SUZUKI 4 hp)
- Folding gangway
- VHF handheld Uship V2
- Fenders
- Mooring lines
- Cover for steering pedestals and cockpit table
- Cockpit cushions
- Sunlounger mattress for coachhouse roof
- Sunlounger mattress for forward coachhouse roof (in front of mast)

Brokerage Liability Disclaimer

All information especially regarding the VAT-status of a yacht has been supplied by third parties. It is non-binding and without guarantee, subject to error and alteration. Our brokerage relies exclusively on information supplied by the vendor carefully compiled and checked by us to the best of our knowledge. Hence, a liability for correctness and completeness of provided information cannot be assumed.

IMAGES



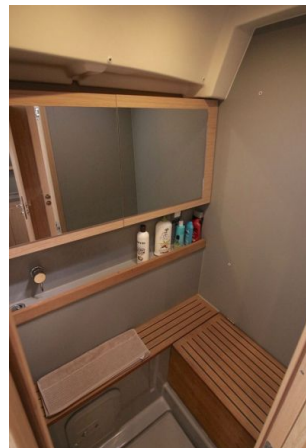
IMAGES



IMAGES



IMAGES



IMAGES

