



# AMEL 60

Year 2021



DIAMOND Yachts, Yachtzentrum Baltic Bay  
Börn 17 | 24235 Laboe

# AMEL 60



**Boat sold.**

## Main Info

<b>Model</b>	AMEL 60
<b>Manufacturer</b>	Chantiers AMEL S.A. (FRA)
<b>Designer</b>	AMEL Design Group
<b>Category</b>	Bluewater cruiser
<b>Year</b>	2021
<b>Location</b>	Ligurien/Italien
<b>Flag</b>	gi
<b>VAT status</b>	excl. VAT
<b>Material</b>	GRP
<b>Rig</b>	Sloop with furling mast
<b>Cabins</b>	3
<b>Berths</b>	6

## Dimensions & Material

<b>LOA</b>	19.00 m
<b>LWL</b>	16.85 m
<b>Beam</b>	5.35 m
<b>Draft</b>	2.35 m
<b>Displacement</b>	32 t
<b>Sail area</b>	165 m <sup>2</sup>
<b>Engine</b>	VOLVO PENTA D4-175G
<b>Power</b>	175 PS/129 KW
<b>Drive</b>	Shaft with VARIPROP
<b>Fresh water</b>	700 L
<b>Fuel</b>	900 L
<b>Holding tank</b>	240 L

## Key Facts

- Electric furling carbon mast.
- Electric davits and dinghy.
- Diesel generator 17,5 kVA.
- Hydraulic gangway.
- Retractable bow and stern thruster.
- Watermaker 240 l/h.
- Electric winches.
- Airconditioning.

## Description

Luxurious and seaworthy bluewater cruiser from France fully equipped for circumnavigation. A proven concept, the high standard of boatbuilding in the shipyard in La Rochelle and the focus on safety, reliability and comfort make AMEL sailing yachts legendary vessels for long distance cruising and you meet them in the most remote areas of the world. Very rigid, torsion-free construction using vinylester resins with laminated bulkheads. Deep, well-protected cockpit with fixed doghouse above the helm station. Bright and modern interior with plenty of light and air below decks through numerous large hull ports and coachhouse windows, eight deck hatches and seven portholes. The AMEL 60 offers plenty of space and living space for up to six passengers in a luxurious, spacious owner's cabin aft across the entire beam of the yacht, two symmetrical, spacious forward guest cabins and three heads compartments with a separate shower each. Bright, modern interior and plenty of light and air below decks through numerous large hull and coachhouse windows, portholes and twelve deck hatches. This AMEL 60 is a very young, private yacht offered by her first owner for personal reasons. The extensive standard specification of the AMEL 60 already includes a carbon fibre furling mast, retractable bow thruster, diesel generator 17.5 kVA, lithium battery bank and much more. In addition, this yacht is equipped with all the options that make long hauls and extended stays on board comfortable: Air ...

## Rig/Sails

- Deck-stepped, top-rigged electric AMEL carbon fibre furling mast
- Three sets of aft-swept spreaders
- Standing rigging in Dyform
- Black painted aluminium boom with hydraulic outhaul
- Electric genoa furler PROFURL
- Fixed cutter stay with electric furler PROFURL
- Gennaker/spinnaker gear
- Dyneema/Vectran halyards
- LED deck lights on mast
- LED spreader lights
- LED cockpit lights in boom
- LED 3-colour light and anchor light in mast top
- Two halyard winches HARKEN Performa on mast
- Retractable dinghy crane integrated in main boom
- Furling mainsail INCIDENCES Hydranet triradial approx. 77 m<sup>2</sup> with UV-protection
- Furling genoa INCIDENCES Hydranet triradial INCIDENCES approx. 88 m<sup>2</sup> with UV-protection
- Furling self-tacking jib INCIDENCES Hydranet triradial approx. 36 m<sup>2</sup> with UV-protection
- Code-0 INCIDENCES
- Electric furling system for Code-0 FACNOR NEX E5

## Deck

- Stainless steel bowsprit for gennaker/code-0 with integrated anchor roller
- Electric anchor windlass with remote control in cockpit
- Mooring gear: Stainless steel DELTA-anchor 50 kg and 100 m stainless steel anchor chain 12 mm
- Second electric anchor windlass
- Second set of mooring gear: Fortress-anchor 23 kg with 40 m stainless steel anchor chain 10 mm and 60 m anchor line
- Continuous fixed sea railing made of stainless steel tube with railing gates to starboard and port
- Integrated teak seats in pushpit
- Four stainless steel mooring cleats
- Four stainless steel spring cleats
- Electric genoa winches HARKEN Performa
- Secondary winches HARKEN Performa
- Electric mainsheet winch Performa
- Large sail locker below foredeck with storage space for fenders
- Spacious lazarette below aft deck
- Deep, well-protected cockpit with steering position and helm seat to port
- Doghouse with windscreen (central opening window), two windscreen wipers, two hatches in roof, ceiling lighting and retractable GRP bimini
- Aft and side panels for bimini (cockpit tent)
- Large, electro-hydraulic folding swim platform with remote control
- Hydraulic gangway
- Swim ladder
- Stern shower hot/cold
- Electric AMEL davits
- Folding cockpit table in teak and stainless steel

## Interior/Layout

- Generous, spacious saloon with L-shaped dinette to port
- Folding, manually adjustable saloon table with additional central bench seat
- The saloon table can be converted into an additional double berth
- L-shaped sofa to starboard
- saloon upholstery in leather
- Chart table with swivelling navigator's seat to port aft
- Longitudinal galley in passage to aft cabin to starboard
  - Worktop in white CORIAN
  - Double sink
  - Microwave with grill 230 V
  - Extractor hood
  - Refrigerator 180 l with 2 drawers
  - Freezer 80 l
  - Additional freezer in saloon
  - Tempered wine cabinet
  - Icemaker 230 V
  - Miele dishwasher
  - LG washer-dryer
  - Electric induction hob Miele (4 burners and oven)
- Luxurious, spacious owner's cabin aft with wide island double berth, settee and dressing table, safe, ample storage space in lockers, compartments, shelves and below the berth, that can be folded up by help of gas springs
- Owner's heads with separate shower and electric vacuum toilet to port
- Two symmetrical guest cabins forward with double berth, locker, drawers and storage compartments
- Two symmetrical heads compartments for guest cabins with separate shower and electric vacuum toilet
- Exclusive, very well finished, light-coloured interior in silk varnished American walnut with white-covered panels, light-coloured laminated floorboards and numerous leather applications
- Leecloth below berths
- OCEANAIR blinds and mosquito screens in deck hatches
- Blinds for hull and coachhouse windows
- LED interior lighting (ceiling spots, indirect lighting and reading lights)
- Indirect LED ambiance lighting

## Technical Equipment

- VOLVO PENTA D4-175G 4-cylinder turbo-diesel 175 hp/129 KW
- Engine hours (as of March 2024): 859 h
- EVC-system with electronic throttle
- Hydraulic gearbox
- Shaft system with flexible coupling AQUADRIVE, folding propeller VARIOPROP and Spurs line cutter on propeller shaft
- Double, switchable diesel filters
- Large, easily accessible and well soundinsulated engine compartment
- Retractable bow thruster SIDEPOWER 16 hp
- Retractable stern thruster SIDEPOWER 13 hp
- Encapsulated 4-cylinder diesel generator ONAN 17,5 KW
- 230 V shore power connection with cable
- 12 V system for engine and generator with alternator 12 V/150 A and two starter batteries 12 V/55 Ah
- 24 V domestic power system with alternator 24 V/150 A and four lithium service batteries MASTERVOLT MLI Ultra 24 V/200 Ah
- 2 x combined battery charger and inverter MASTERVOLT Mass Combi 24 V/110 A/4.000 W
- Solar panels 24 V/525 pW on doghouse roof
- 230 V and 12 V/USB sockets in interior
- Air conditioning for saloon and all cabins
- Watermaker DESSALATOR dual voltage 24 V/230 V/100 l/h
- Three electric vacuum toilets, each with fresh water flushing and holding tank 80 l with deck connection and sea discharge
- Hot water boiler 50 l for owner's heads and galley
- Hot water boiler 40 l for forward heads compartments
- Grey water tank 60 l
- Bauer Junior diving compressor
- LED navigation lights
- Safe in the owner's cabin

## Navigation/Electronics

- BROOKS [&] GATEHOUSE Hydra 5000 system
- 2 x B[&]G H5000 GFD display in cockpit and 1 x H5000 GFD display at chart table
- Analogue B[&]G wind display in cockpit
- Autopilot FURUNO Navpilot 711C
- 16" multifunction display FURUNO Navnet TZT3 at helm station
- Second 16" multifunction display FURUNO Navnet TZT3 at chart table
- GPS FURUNO GP330
- Radar antenna on first spreader
- AIS Class B-transponder FURUNO FA50
- Compass
- Two video cameras in masthead
- FLIR thermal imaging camera in masthead
- B[&]G 9S Vulcan Forward Scan sonar transducer
- VHF-radio GARMIN 315i at chart table and second station at helm
- Satellite phone IRIDIUM Certus Vesselink
- Large TV LCD screen in saloon with TV-aerial, dedicated inverter for all TV screens 24 V/230 V/1.500 W
- TV LCD screen 43" in aft cabin
- TV LCD screen in both guest cabins
- Satellite TV antenna KVH Tracvision TV5 on antenna mast at stern
- Marine entertainment system FUSION with two loudspeakers in saloon and two cockpitspeakers
- Router World Pepwave WIFI 3G/4G with receiver and amplifier

## Safety

- 8-person life raft VIKING in container in integrated bracket at pushpit
- Jackstays on deck
- Fire extinguisher
- Fire extinguishing system in engine compartment
- Electric and manual bilge pumps

### Accessories

---

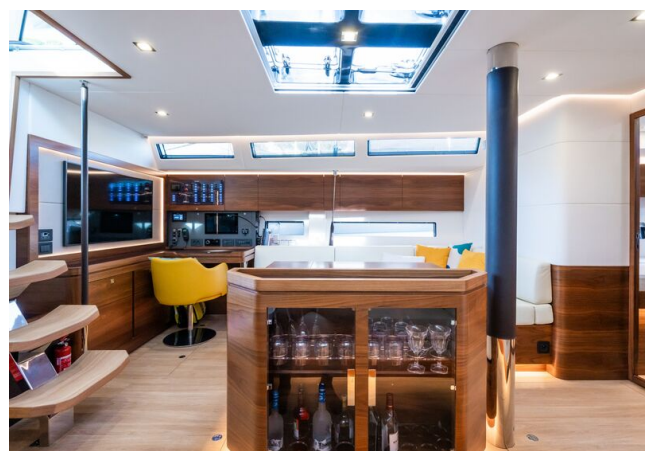
- Dinghy: HIGHFIELD RIB 3,40 m with 20 hp 4-stroke HONDA outboard engine
- Cockpit cushions
- Sunbed cushions for aft deck
- Sunbed cushions for foredeck
- Sun awning for main boom
- Sun protection cover for windscreen
- canvas covers for console, steering wheel, helm seat, companionway, cockpit table and instruments
- Inflatable fenders
- Mooring lines

---

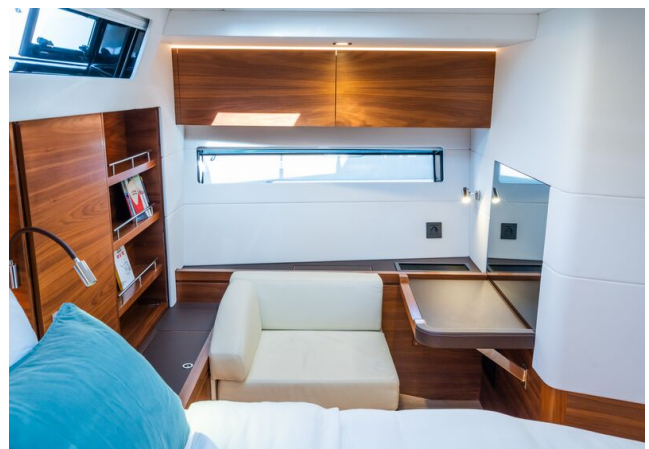
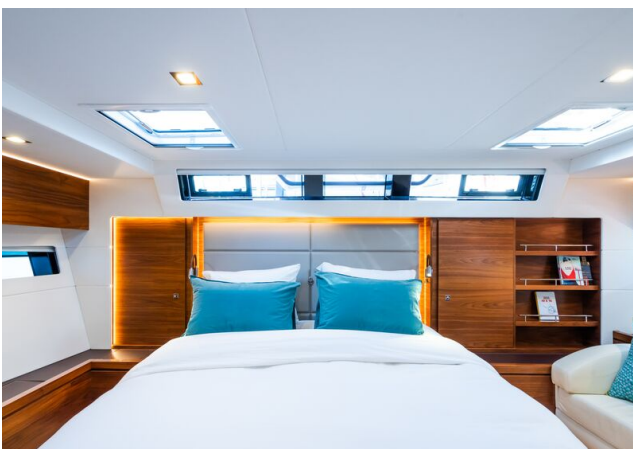
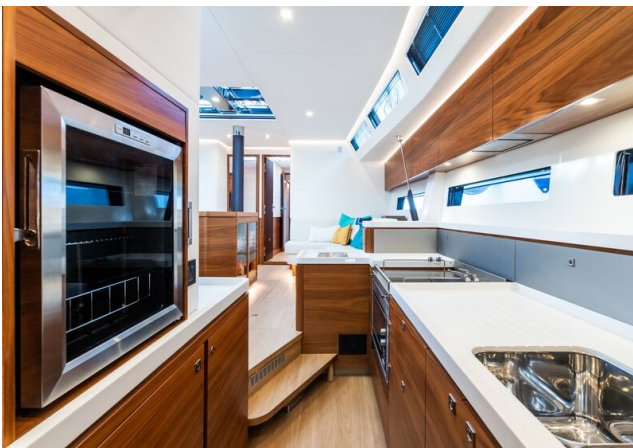
#### Brokerage Liability Disclaimer

All information especially regarding the VAT-status of a yacht has been supplied by third parties. It is non-binding and without guarantee, subject to error and alteration. Our brokerage relies exclusively on information supplied by the vendor carefully compiled and checked by us to the best of our knowledge. Hence, a liability for correctness and completeness of provided information cannot be assumed.

## IMAGES



## IMAGES



## IMAGES



## IMAGES

