



AMEL 55

Year 2012



DIAMOND Yachts, Yachtzentrum Baltic Bay
Börn 17 | 24235 Laboe

AMEL 55



Boat sold.

Main Info

Model	AMEL 55
Manufacturer	Chantiers AMEL S.A. (FRA)
Designer	AMEL Design Group
Category	Bluewater cruiser
Year	2012
Location	Côte d'Azur/Südfrankreich
Flag	Malta
VAT status	EU-VAT paid
Material	GRP
Rig	Ketch with cutter stay
Cabins	2
Berths	5

Dimensions & Material

LOA	17.30 m
LWL	14.85 m
Beam	4.99 m
Draft	2.20 m
Displacement	24 t
Sail area	151 m ²
Engine	STEYR Diesel
Power	144 PS/106 KW
Drive	AMEL angle drive
Fresh water	800 L
Fuel	900 L
Holding tank	150 L

Key Facts

- 2 cabin layout with owner's cabin aft.
- Diesel generator and air conditioning.
- Electric furling mast.
- Fixed doghouse.
- HighTech MASTERVOLT electric system.
- Bow thruster and stern thruster.
- Electric stainless steel davits.
- Hydraulic gangway.

Description

Luxurious and seaworthy bluewater cruiser from France fully equipped for circumnavigation. Her proven concept, the high standard of boatbuilding in the shipyard and the focus on safety, reliability and comfort make AMEL sailing yachts legendary boats for long distance sailing and you meet them in the most remote areas of the world. Very rigid, torsion-free construction with laminated bulkheads. Well equipped, hardly used, firsthand owner's yacht delivered in 2013. 2 cabin-version with owner's cabin aft over the entire beam of the yacht, VIP guest cabin forward and two heads. Deep, well protected cockpit with fixed windscreen and doghouse covering the helm station. All sheets and trimlines can be operated from the cockpit. Interior in American chestnut and light floorboards. Very comprehensive specification including diesel generator, electric mainsail furler, hydraulic gangway, electric davits, bow- and sternthruster and complete sail wardrobe etc.

Rig/Sails

- Ketch-rig
- Deck stepped, 9/10 fractional AMEL furling mast with two sets of aftswept spreaders
- Deck stepped, top rigged AMEL furling mizzen mast with one set of aftswept spreaders
- Both masts painted white
- Electric RECKMANN genoa furler
- Cutter stay with electric RECKMANN furling system
- Aluminium spinnaker pole
- Spinnaker/gennaker gear
- LED 3 color light and anchor light in mast top
- All white sails by INCIDENCES in Hydranet:
 - Furling mainsail approx. 47 m²
 - Furling mizzen approx. 29 m²
 - Furling genoa approx. 75 m² with UV-protection
 - Cutter jib approx. 22 m² with UV-protection
- Asymmetric spinnaker INCIDENCES with furler

Deck

- Big stainless steel mooring cleat
- Solid stainless steel bow fitting designed for double mooring gear
- Electric windlass with remote control in cockpit
- Stainless steel WASI anchor 30 kg and 100 m stainless steel anchor chain 10 mm (Cromox-Duplex)
- Second electric anchor windlass
- Second anchor: DELTA-anchor 25 kg, 40 m stainless steel anchor chain 10 mm and 40 m anchor line 16 mm
- Electric deckwash pump
- Continuous solid guard rail in stainless steel tube with railing gates to port and starboard
- 4 folding stainless steel mooring cleats
- 4 folding stainless steel spring cleats
- Electric LEWMAR genoa winches
- Electric LEWMAR winches for cutter jib
- Electric LEWMAR winch for main sheet
- Large sail locker forward with storage space for fenders, mooring lines and sails
- Spacious locker below port side deck
- Storage space for tender below aft deck
- Doghouse with fixed windscreen (opening central window and two opening hatches in roof) and two windscreen wipers
- Retractable bimini
- Canvas panels for sides and aft to close the whole cockpit
- Stainless steel side boarding ladder
- Electric SIMPSON stainless steel davits
- Hydraulic gangway with remote control
- Folding cockpit table
- Stainless steel bow protection

Layout/Interior

- Interior in American chestnut with light floorboards
- Spacious saloon with U-shaped dinette to port around saloon table
- Saloon table with electric post can be converted to double berth
- Longitudinal sofa to starboard
- Saloon upholstery in leather "Riviera Blue"
- U-shaped galley to port aft
- CORIAN worktop
- Sink
- Gas stove (3 burners and oven)
- Electric extraction hood
- Microwave oven 230 V
- Refrigerator 150 l
- Freezer 150 l
- Charttable to starboard aft
- Spacious owner's cabin aft with queensize central island berth, plenty of storage space in lockers, drawers and shelves
- En-suite owner's heads with separate shower to port
- Forward guest cabin with island double berth
- Forward heads compartment with separate shower
- Seaberth to starboard in passage to aft cabin with heads
- Bed slats
- OCEANAIR blinds and mosquito screens in deck hatches

Technical Equipment

- STEYR 4 cylinder turbo diesel 144 hp/106 KW with electronic throttle
- Double diesel filters with 3-way valve
- Hydraulic transmission with shaft brake
- AMEL angle transmission system
- Feathering propeller
- Large, easily accessible and sound-insulated engine room
- Retractable bow thruster 11 hp
- Retractable stern thruster
- Diesel generator ONAN 11 KW
- 230 V shore power connection with MASTERVOLT isolation transformer and high current protection
- Two battery chargers 24 V/100 A and 24 V/60 A for service batteries
- Battery charger 24 V/60 A for front battery MASTERVOLT
- 2 x Inverter 24 V/230 V/2.500 MASTERVOLT
- 24 V service battery bank with 4 x Lithium batteries with a total capacity of 720 Ah
- Bow batterie 24 V/180 Ah
- Starter batteries 12 V for main engine and generator
- 2 x automatic switch control MASTERVOLT for shore power/generator/inverter
- All MASTERVOLT components are connected to a Master view display at the 230 V-panel to monitor the whole electric system.
- Solars panels VICTRON
- 12 V/24 V/230 V sockets
- Air conditioning for the entire yacht
- Diesel heating
- Washer/dryer LG
- Watermaker 230 V/240 l/h
- Freshwater filter in galley
- Diving compressor (Bauer Junior II-W)

Navigation/Electronics

- BROOKS [&] GATEHOUSE H3000 system
- B[&]G GFD display at helm station and GFD display at chart table
- B[&]G 360° analogue wind direction display
- 2 x autopilot FURUNO Navpilot 711C
- GPS/chartplotter FURUNO Navnet 3D 12" in cockpit
- GPS/chartplotter FURUNO Navnet 3D 12" at chart table
- Radar antenna FURUNO DRS4DL
- GPS-receivers FURUNO GP-150 and GP-330
- AIS-transponder FURUNO FA50
- Forward sounding sonar
- VHF GARMIN at charttable with second unit in cockpit and loudhailer
- Navtex FURUNO NX300
- Satellite telephone THRANE [&] THRANE Fleet Broad Band 250
- TV LCD flatscreen 32" with electric lift in saloon with Blu-Ray-player, TV-antenna and inverter 24 V/230 V/800 W
- Satellite TV INTELLIAN
- Radio/CD/MP3-player with BOSE sound system in saloon and cockpit speakers

Safety

- Liferaft ZODIAC in container
- EPIRP
- Ocean Signal Sea Safe S100 SART
- Distress flare kit
- Horseshoe
- Lightning protection
- Automatic fire extinguisher in engine room
- Fire extinguishers
- Alarm Advanced Tracking System
- Electric and manual bilge pump

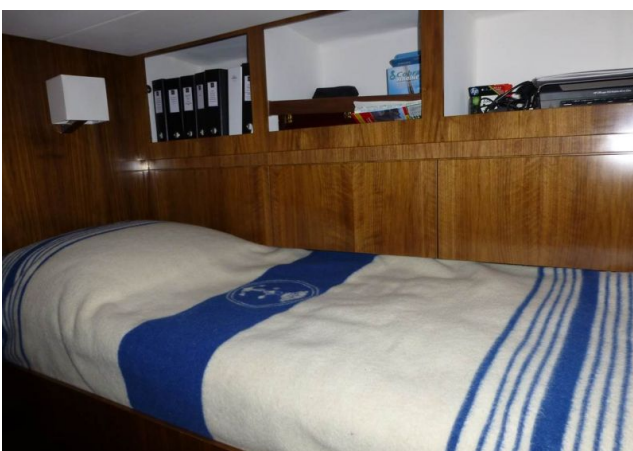
Accessories

- Cockpit cushions
- Sun bathing cushion for aft deck
- Fenders
- Mooring lines

Brokerage Liability Disclaimer

All information especially regarding the VAT-status of a yacht has been supplied by third parties. It is non-binding and without guarantee, subject to error and alteration. Our brokerage relies exclusively on information supplied by the vendor carefully compiled and checked by us to the best of our knowledge. Hence, a liability for correctness and completeness of provided information cannot be assumed.

IMAGES



IMAGES

