



AMEL 50

Year 2018



DIAMOND Yachts, Yachtzentrum Baltic Bay
Börn 17 | 24235 Laboe

AMEL 50



Boat sold.

Main Info

Model	AMEL 50
Manufacturer	Chantiers AMEL S.A. (FRA)
Designer	AMEL Design Group
Category	Bluewater cruiser
Year	2018
Location	Südfrankreich
Flag	France
VAT status	EU-VAT paid
Material	GRP
Rig	Sloop with cutter stay
Cabins	3
Berths	6

Dimensions & Material

LOA	16.50 m
LWL	14.50 m
Beam	4.79 m
Draft	2.15 m
Displacement	19 t
Sail area	126 m ²
Engine	VOLVO PENTA D3-110
Power	110 PS/81 KW
Drive	Shaft drive
Fresh water	600 L
Fuel	675 L
Holding tank	160 L

Key Facts

- Cutter stay with self-tacking jib.
- Electric davits incl. dinghy.
- Retractable bow thruster.
- Electric furling mast.
- Diesel generator ONAN 8 KW.
- Electric genoa furler.
- Fixed doghouse.
- Air conditioning.

Description

Luxurious and seaworthy bluewater cruiser from France fully equipped for circumnavigation. Her proven concept, the high standard of boatbuilding in the shipyard and the focus on safety, reliability and comfort make AMEL sailing yachts legendary vessels for long distance cruising and you meet them in the most remote areas of the world. Very rigid, torsion-free construction using vinylester resins with laminated bulkheads.

Deep, well-protected cockpit with fixed doghouse above the helm station. Bright and modern interior with plenty of light and air below decks through numerous large hull ports and coachhouse windows, eight deck hatches and seven portholes. The AMEL 50 was elected "European Yacht of the Year 2018" in the category luxury cruiser. AMEL 50 fully equipped for long distance sailing. Comprehensive specification incl. retractable bow thruster, electric furling systems for mainsail and genoa, electric winches, self-tacking jib on cutter stay, air conditioning, diesel generator 8 KW, watermaker, electric davits with dinghy etc. Bright finish in satin varnished oak and white covered panels. The cover picture is a brochure photo of a sistership.

Rig/Sails

- Deck stepped, top-rigged, AMEL furling mast
- Two sets of aft-swept spreaders
- Electric mainsail furling system and electric outhaul
- Rig painted white
- Electric genoa furling system
- Fixed cutter stay with manual furling system FACNOR
- Spinnaker pole (stowed on mast)
- Gennaker gear
- Dyneema/Vectran halyards
- LED 3 color light and anchor light in mast top
- Two halyard winches HARKEN 40.2ST on mast
- Furling mainsail INCIDENCES triradial approx. 62 m²
- Furling genoa INCIDENCES triradial approx. 64 m² with UV-protection
- Self-tacking jib on cutter stay INCIDENCES triradial approx. 24 m² with UV-protection
- Furling gennaker INCIDENCES approx. 180 m² (color: white) with furling system

Deck

- Stainless steel bowsprit for gennaker/code-0 with integrated anchor roller
- Electric anchor windlass LEWMAR with remote control and chain counter in cockpit
- Mooring gear: DELTA anchor and 100 m anchor chain 10 mm
- Continuous fixed sea railing made of stainless steel tube with railing gates to port and starboard
- Integrated teak seats in pushpit
- Four stainless steel mooring cleats
- Four stainless steel spring cleats amidships
- Electric genoa winches HARKEN 60.2STE
- Secondary winches HARKEN 46.2ST
- Electric halyard winch HARKEN 46.2STE
- Large sail locker below foredeck with storage for fenders, mooring ropes and sails
- Large deck locker below aft deck
- Deep well protected cockpit with helm station and helm seat to port
- Doghouse with windscreen (opening central window), two hatches in roof, overhead lighting and aft retractable GRP bimini
- Canvas cockpit enclosure
- Electro-hydraulic folding swim platform with radio remote control
- Swim ladder
- Stern shower hot/cold
- Electric AMEL davits
- Folding cockpit table in teak and stainless steel

Layout/Interior

- Generous, spacious saloon with U-shaped dinette to port
- Folding, electric adjustable saloon table with two additional sliding seats
- The saloon table can be converted into an additional double berth
- L-shaped sofa to starboard
- Forward facing chart table to port aft
- Longitudinal galley in passage to aft cabin to starboard
 - Worktop in white CORIAN
 - Sink
 - Microwave with grill 230 V
 - Refrigerator 125 l with 2 drawers
 - Freezer
 - Espresso machine
 - Dishwasher
 - Gas stove (3 burners and oven)
- Luxurious, spacious owner's cabin aft with island double berth, armchair and dressing table, ample storage in lockers, compartments, shelves and below the berth, which can be folded up with gas struts
- Owner's heads compartment with separate shower and electric toilet to port
- Guest stateroom forward with island double berth
- Second heads compartment with separate shower and electric toilet to port
- Lateral cabin to starboard with bunk beds
- Exclusive, very well finished interior in satin varnished oak with white padded panels, laminated floor board and leather details
- OCEANAIR blinds and mosquito screens in deck hatches
- Blinds for hull windows and coachhouse windows
- LED interior lighting (ceiling spots, indirect lighting and reading lights)

Technical Equipment

- VOLVO PENTA D3-110 5 cylinder inboard diesel 110 hp/81 KW
- Engine hours (October 2022: 963 h)
- EVC system with electronic throttle
- Hydraulic transmission
- Shaft system with feathering propeller and Spurs line cutter on propeller shaft
- Large, easily accessible and very well soundinsulated engine compartment
- Retractable bow thruster SIDEPOWER 24 V/8 hp
- Sound insulated diesel generator ONAN 8 KW with auto start function (operating hours in October 2022: 355 h)
- Hydrogenerator Watt[&]Sea POD600 24 V/600 W max.
- 230 V shore power connection with charging cable
- Gel service battery bank 24 V/600 Ah
- Starter battery for main engine 12 V
- Starter battery for generator 12 V
- 230 V and 12 V/USB sockets in interior
- Air conditioning DOMETIC 48.000 BTU for saloon and cabins (heats in reverse cycle)
- Washer/dryer LG
- Watermaker DESSALATOR Dual Voltage 24 V/230 V/100 l/h
- Two electric toilets DOMETIC each with holding tank 80 l with deck connection and sea discharge
- Hot water boiler 50 l
- Fresh water filter
- LED navigation lights
- LED interior lighting

Navigation/Electronics

- BROOKS [&] GATEHOUSE Hydra 5000 system with transducers for log, echo sounder and wind
- B[&]G H5000 GFD display in cockpit and H5000 GFD display at chart table
- Analog B[&]G wind display in cockpit
- Autopilot FURUNO Navpilot 711C
- Second fully independent autopilot FURUNO Navpilot 711C
- Multifunction display FURUNO Navnet TZT2 15" at helm station
- Radar antenna on first spreader
- Compass
- Video camera in mast
- VHF-radio GARMIN with second station in cockpit
- Satellite phone Iridium Go
- TV LCD flat screen 40" with electric lift in saloon, TV antenna and it's own inverter 24 V/230 V/800 W
- FUSION MS-AV750 marine entertainment system (radio/CD/DVD) with two speakers in saloon, two speakers in aft cabin and two cockpit speakers
- Router World Pepwave WIFI 3G/4G with receiver and amplifier

Safety

- Life raft Seasafe 6 pers. in container with integrated bracket in railing
- EPIRB McMurdo
- Fire extinguisher
- Automatic fire extinguishing system in engine room
- Electric and manual bilge pumps

Accessories

- Dinghy: RIB Highfield 2,90 with outboard engine HONDA 15 hp
- Carbon fiber gangway
- Spare anchor FORTRESS with 30 m anchor line
- Cockpit cushions
- Sunbed cushions for aft deck
- Sun awning for main boom
- Canvas covers for console, helmsman's seat, steering wheel, cockpit table and instruments
- Fenders
- Mooring lines

Brokerage Liability Disclaimer

All information especially regarding the VAT-status of a yacht has been supplied by third parties. It is non-binding and without guarantee, subject to error and alteration. Our brokerage relies exclusively on information supplied by the vendor carefully compiled and checked by us to the best of our knowledge. Hence, a liability for correctness and completeness of provided information cannot be assumed.

IMAGES



IMAGES



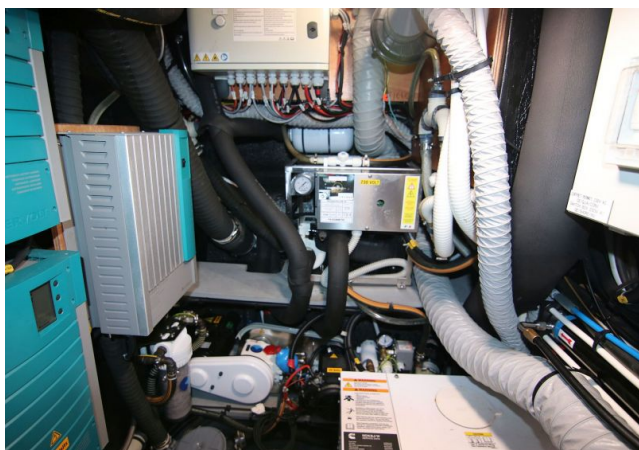
IMAGES



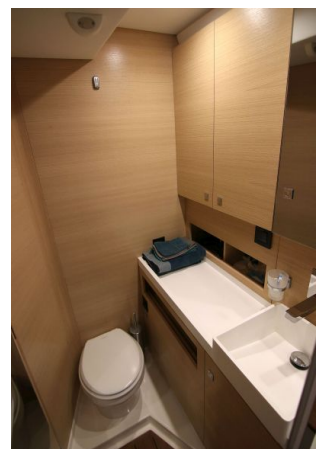
IMAGES



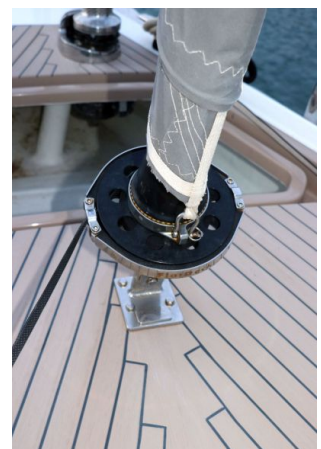
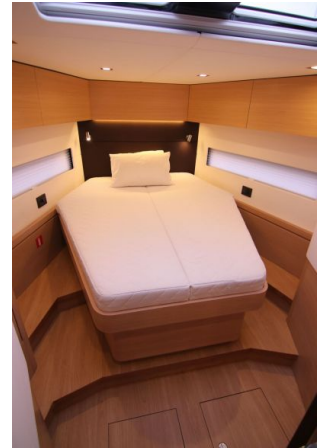
IMAGES



IMAGES



IMAGES



IMAGES

