



AMEL 50

Year 2020



DIAMOND Yachts, Yachtzentrum Baltic Bay
Börn 17 | 24235 Laboe

AMEL 50



Boat sold.

Main Info

Model	AMEL 50
Manufacturer	Chantiers AMEL S.A. (FRA)
Designer	AMEL Design Group
Category	Bluewater cruiser
Year	2020
Location	Französische Atlantikküste
VAT status	VAT deductible
Material	GRP
Rig	Sloop with furling mast
Cabins	3
Berths	6

Dimensions & Material

LOA	16.50 m
LWL	14.50 m
Beam	4.79 m
Draft	2.15 m
Displacement	23 t
Sail area	126 m ²
Engine	VOLVO PENTA D3-110
Power	110 PS/81 KW
Drive	Shaft with VARIPROP
Fresh water	600 L
Fuel	675 L
Holding tank	160 L

Key Facts

- Airconditioning and diesel heating.
- Electric davits and dinghy.
- Retractable bowthruster.
- Electric furling mast.
- Diesel generator ONAN 8 KW.
- Watermaker 100 l/h.
- Electric winches.
- Fixed doghouse.

Description

Luxurious and seaworthy bluewater cruiser from France fully equipped for circumnavigation. Her proven concept, the high standard of boatbuilding in the shipyard in La Rochelle and the focus on safety, reliability and comfort make AMEL sailing yachts legendary vessels for long distance cruising and you meet them in the most remote areas of the world. Very rigid, torsion-free construction using vinylester resins with laminated bulkheads. Deep, well-protected cockpit with fixed doghouse above the helm station. Bright and modern interior with plenty of light and air below decks through numerous large hull ports and coachhouse windows, eight deck hatches and seven portholes. The AMEL 50 was elected "European Yacht of the Year 2018" in the category luxury cruiser. Very well equipped yacht for worldwide cruising. Only delivered in July 2020 she is offered by her first owner. The specification of this AMEL 50 leaves nothing to be desired: Diesel generator, bow thruster, electric winches, solar panels, electric davits with dinghy, air conditioning and diesel heating, watermaker etc. Interior in satin varnished American walnut with white covered panels, light laminated floorboards and numerous leather applications. The asking price is quoted including VAT, but tax can be deducted if exported to a non EU-state or purchased by a company for commercial use.

Rig/Sails

- Deck-stepped, top-rigged AMEL furling mast
- Two sets of aft-swept spreaders
- Electric mainsail furling system and electric outhaul
- Rig painted white
- Electric genoa furling system PROFURL NDE2
- Fixed cutter stay with electric furling system FACNOR
- Gennaker/spinnaker gear
- Dyneema/Vectran halyards
- LED deck lights on mast
- LED spreader lights
- LED cockpit light in boom
- LED 3-colour light and anchor light in top
- Two halyard winches HARKEN 40.2ST on mast
- Dinghy crane integrated in main boom
- Furling mainsail INCIDENCES Hydranet triradial approx. 62 m² with UV-protection
- Furling genoa INCIDENCES Hydranet triradial INCIDENCES approx. 64 m² with UV-protection
- Self tacking jib INCIDENCES Hydranet triradial INCIDENCES approx. 24 m² with UV-protection
- Furling gennaker INCIDENCES approx. 180 m² with furling system
- Parasailor

Deck

- Stainless steel bowsprit for gennaker/code-0 with integrated anchor roller
- Electric anchor windlass with remote control in cockpit
- Mooring gear: Stainless steel ULTRA anchor 45 kg and 100 m anchor chain 10 mm
- Continuous fixed stainless steel guardrail with railing gates to starboard and port
- Integrated teak seats in pushpit
- Four stainless steel mooring cleats
- Four stainless steel spring cleats
- Electric genoa winches HARKEN 60.2STE
- Secondary winches HARKEN 46.2ST
- Electric mainsheet winch HARKEN 46.2STE
- Large sail locker below foredeck with storage for fenders, mooring lines and sails
- Large lazarette below aft deck
- Deep, well protected cockpit with helm station and helm seat to port
- Doghouse with windscreen (central opening window), two hatches in roof, overhead lighting and retractable GRP bimini
- Aft and side panels for bimini (cockpit enclosure)
- Electro-hydraulic folding swim platform with wireless remote control
- Swim ladder
- Stern shower hot/cold
- Electric davits
- Folding cockpit table in teak and stainless steel

Interior/Layout

- Generous saloon with U-shaped dinette to port
- Folding, manually adjustable saloon table with two additional sliding seats
- Saloon table converts to additional double berth
- L-shaped settee to starboard
- Forward facing chart table with navigator seat to port aft
- Longitudinal galley in passage to aft cabin to starboard
 - Worktop in white CORIAN
 - Double sink
 - Microwave with grill 230 V
 - Refrigerator 125 l with 2 drawers
 - Freezer
 - Dishwasher
 - Electric stove FORCE 10 (3 burners and oven)
- Luxurious, spacious owner's cabin aft with wide island double berth, settee and vanity table, safe, ample storage in lockers, compartments, shelves and below the berth, that can be folded up by the help of gas struts
- En suite owner's heads compartment with separate shower and electric toilet to port
- Guest cabin forward with island double berth
- Second heads compartment with separate shower and electric toilet to port
- Lateral cabin to starboard with double bunk beds
- Exclusive, well finished, light-coloured interior in satin-varnished American walnut with white-covered panels, laminated floorboards and numerous leather applications
- Leecloths for berths
- OCEANAIR blinds and mosquito screens in deck hatches
- Blinds for hull and coachhouse windows
- LED interior lighting (ceiling spotlights, indirect lighting and reading lamps)

Technical Equipment

- VOLVO PENTA D3-110 5 cylinder inboard diesel 110 hp/81 KW
- Engine hours (as of May 2023): 454 h
- EVC-system with electronic throttle
- Hydraulic gearbox
- Shaft drive system with VARIOFOLD folding propeller and Spurs line cutter on propeller shaft
- Large, easily accessible and very well sound insulated engine compartment
- Retractable bow thruster SIDEPOWER 24 V/8 hp
- Sound insulated 3 cylinder diesel generator ONAN 8 KW (operating hours: 438 h)
- 230 V shore power connection with charging cable
- Solar panels on davits and on doghouse roof
- Battery charger MASTERVOLT 24 V/60 A
- Inverter MASTERVOLT 24 V/230 V/4.000 W
- Gel service battery bank 24 V/600 Ah
- Starter battery 12 V for engine and generator
- 230 V and 12 V/USB-sockets in the interior
- Air conditioning for saloon and all cabins
- Diesel heating WEBASTO Aerotherm 7,6 KW
- Washing machine with dryer
- Watermaker DESSALATOR dual voltage 24 V/230 V/100 l/h (operating hours: 136 h)
- Two electric toilets each with holding tank 80 l with deck connection and sea discharge
- Hot water boiler 50 l
- LED navigation lights
- LED interior lighting
- Safe

Navigation/Electronics

- BROOKS [&] GATEHOUSE Hydra 5000 system
- 2 x B[&]G H5000 GFD display in cockpit and 1 x H5000 GFD display at chart table
- Analogue B[&]G wind display in cockpit
- Autopilot FURUNO Navpilot 711C
- Second independent autopilot FURUNO Navpilot 711C
- 15" multifunction display FURUNO Navnet TZT2 at helm station
- Second 15" multifunction display FURUNO Navnet TZT2 at chart table
- GPS-receiver FURUNO GP330
- Radar antenna on first spreader
- AIS Class B-transponder FURUNO FA50
- Compass
- Video camera in mast
- VHF-radio GARMIN 215 at chart table and second station at helm
- Satellite phone IRIDIUM GO
- TV LCD screen 40" with electric lift in saloon, TV antenna and it's own inverter 24 V/230 V/800 W
- TV LCD screen 28" in aft cabin
- Marine entertainment system FUSION Apollo SRX770 with two speakers in saloon and two cockpit speakers
- Router World Pepwave WIFI 3G/4G with receiver and amplifier
- Clock, barometer, thermometer

Safety

- Life raft ZODIAC 8 pers. in container at pushpit
- EPIRB
- Fire extinguisher
- Fire extinguishing system in engine compartment
- Electric and manual bilge pumps
- Various safety equipment

Accessories

- Dinghy: HIGHFIELD RIB 3,10 m with 15 hp HONDA outboard engine
- Folding carbon fibre gangway
- Cockpit cushions
- Sunbathing cushions for aft deck
- Sun awning for main boom
- Sun protection covers for windscreen
- Protection covers for console, steering wheel, helm seat, companionway, cockpit table and instruments
- Spare parts kit
- Inflatable fenders
- Mooring lines

Brokerage Liability Disclaimer

All information especially regarding the VAT-status of a yacht has been supplied by third parties. It is non-binding and without guarantee, subject to error and alteration. Our brokerage relies exclusively on information supplied by the vendor carefully compiled and checked by us to the best of our knowledge. Hence, a liability for correctness and completeness of provided information cannot be assumed.

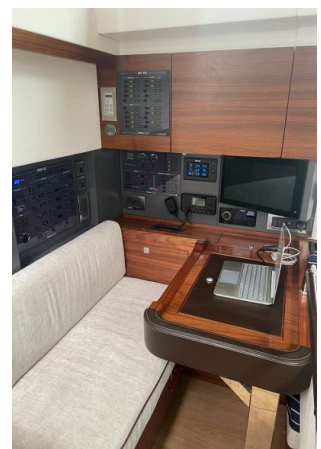
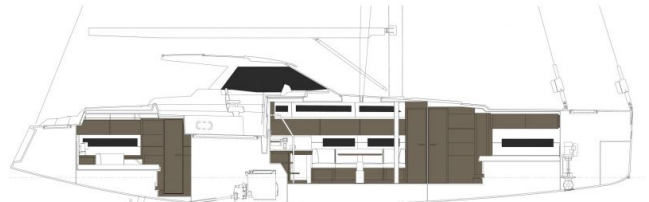
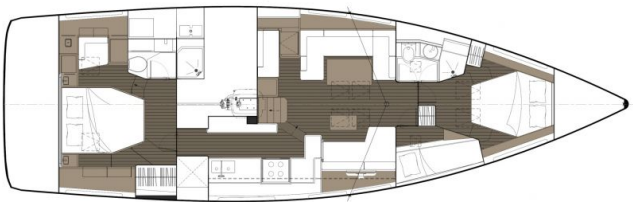
IMAGES



IMAGES



IMAGES



IMAGES

