



# AMEL 50

Year 2024



DIAMOND Yachts, Yachtzentrum Baltic Bay  
Börn 17 | 24235 Laboe

# AMEL 50



**Boat sold.**

## Main Info

<b>Model</b>	AMEL 50
<b>Manufacturer</b>	Chantiers AMEL S.A. (FRA)
<b>Designer</b>	AMEL Design Group
<b>Category</b>	Bluewater cruiser
<b>Year</b>	2024
<b>Location</b>	Portugal
<b>Flag</b>	Switzerland
<b>VAT status</b>	excl. VAT
<b>Material</b>	GRP
<b>Rig</b>	Sloop with furling mast
<b>Cabins</b>	3
<b>Berths</b>	6

## Dimensions & Material

<b>LOA</b>	16.50 m
<b>LWL</b>	14.50 m
<b>Beam</b>	4.79 m
<b>Draft</b>	2.15 m
<b>Displacement</b>	23 t
<b>Sail area</b>	126 m <sup>2</sup>
<b>Engine</b>	VOLVO PENTA D3-150
<b>Power</b>	150 PS/110 KW
<b>Drive</b>	Shaft with folding propeller
<b>Fresh water</b>	600 L
<b>Fuel</b>	650 L
<b>Holding tank</b>	160 L

## Key Facts

- Built in 2024, active warranty.
- American Walnut interior.
- Electric davits and dinghy.
- Retractable bow thruster.
- Air conditioning and diesel heating.
- Diesel generator ONAN 8 KW.
- Electric furling mast.
- Watermaker 100 l/h.

## Description

Luxurious and seaworthy bluewater cruiser built in France fully equipped for circumnavigation. Her proven concept, the high standard of boatbuilding in the shipyard and the focus on safety, reliability and comfort make AMEL sailing yachts legendary vessels for long distance cruising and you meet them in the most remote areas of the world. Very rigid, torsion-free construction using vinylester resins with laminated bulkheads.

Deep, well-protected cockpit with fixed doghouse above the helm station. Bright and modern interior with plenty of light and air below decks through numerous large hull ports and coachhouse windows, eight deck hatches and seven portholes. The AMEL 50 was elected "European Yacht of the Year 2018" in the category luxury cruiser. Fully equipped owner's yacht. This AMEL 50 was handed over to her owner in April 2024 and is now on the market for personal reasons. The shipyard's warranty runs until March 2026. Complete specification incl. diesel generator 8 KW, watermaker, air conditioning and diesel heating, washing machine, electric winches, electric davits incl. dinghy etc. Thanks to the electric genoa furling system, self-tacking jib with electric furling system and electric furling main incl. electric outhaul, this AMEL 50 can be handled single-handed. Modern, exclusive interior in silk-varnished American walnut with white-covered panels, light-coloured laminated floorboards and numerous leather applications. The AMEL 50 is very well maintained, is lying ...

## Rig/Sails

- Top-rigged, deck-stepped AMEL furling mast
- Two sets of aft swept spreaders
- Electric mainsail furling system and electric outhaul
- Rig painted white
- Electric genoa furling system PROFURL
- Fixed cutter stay with PROFURL electric furling system
- Gennaker/spinnaker gear
- Dyneema/Vectran halyards
- Spinnaker pole (stowed on mast)
- LED deck spotlight on mast
- LED spreader lights
- LED cockpit lighting in boom
- LED 3-colour light and anchor light in mast top
- Two HARKEN 40.2STA halyard winches on mast
- Dinghy crane integrated in boom
- HARKEN track and traveller for self-tacking jib
- HARKEN genoa tracks and line-adjustable sheeting cars
- INCIDENCES triradial furling mainsail approx. 62 m<sup>2</sup> with UV-protection
- INCIDENCES triradial furling genoa approx. 64 m<sup>2</sup> with UV-protection
- Self-tacking jib for cutter stay Hydranet triradial approx. 24 m<sup>2</sup> with UV-protection
- Furling gennaker INCIDENCES approx. 180 m<sup>2</sup> with furling system

## Deck

- Stainless steel bowsprit for gennaker/code-0 with integrated anchor roller
- Electric anchor windlass LEWMAR V5 2.000 W with remote control and chain counter in cockpit
- Mooring gear: Stainless steel Ultra-anchor 45 kg and 100 m anchor chain 10 mm
- Electric AMEL davits
- Continuous fixed sea railing made of stainless steel tube with railing gates to starboard and port side
- Integrated teak seats in pushpit
- Four stainless steel mooring cleats
- Four stainless steel spring cleats
- Two additional cleats and fairleads at stern
- Electric genoa winches HARKEN 60.2STEA
- Secondary winches HARKEN 46.2STA
- Electric mainsheet winch HARKEN 46.2STEA
- Large sail locker below foredeck with storage space for fenders, mooring lines and sails
- Large lazarette below aft deck
- Deep, well-protected cockpit with helm station and pilot seat to port
- Doghouse with windscreen (central opening window), two hatches in roof, ceiling lighting and extendable GRP bimini aft
- Stern and side panels for bimini (cockpit enclosure)
- Electro-hydraulic folding swim platform with radio remote control
- Swim ladder
- Hot/cold stern shower
- Folding cockpit table in teak and stainless steel

## Interior/Layout

- AMEL 50 with exclusive, beautifully finished interior in silk-varnished American Walnut with white-covered panels, laminated floorboards and numerous leather applications
- Spacious saloon with U-shaped seating to port
- Folding, electrically height-adjustable saloon table at dinette with two additional sliding seats
- Saloon table converts to an additional berth
- L-shaped sofa to starboard
- Forward-facing chart table to port aft
- Longitudinal galley in passage to aft cabin to starboard
  - Work top in white CORIAN
  - Double sink
  - Microwave with grill 230 V
  - Refrigerator 125 l with 2 drawers
  - Dishwasher
  - Freezer below saloon sofa
- Luxurious, spacious owner's cabin aft with wide island double berth, settee and dressing table, plenty of storage space in lockers, compartments, shelves, additional bookshelf and below berth, which folds up by help gas pressure springs
- Owner's heads compartment with separate shower and electric toilet to port
- Guest cabin forward with island double berth
- Guest heads compartment with separate shower and electric toilet to port
- Lateral cabin to starboard with double bunk beds
- Lee cloth for all berths
- OCEANAIR roller blinds and mosquito screens
- Blinds for hull and coachhouse windows
- LED interior lighting with dimmer (ceiling spotlights, indirect ambient lighting and reading lamps)

## Technical Equipment

- VOLVO PENTA D3-150 5 cylinder inboard diesel 150 hp/110 KW
- Engine hours (as of January 2025): 741 h
- EVC-system with electronic throttle
- Hydraulic gearbox
- Shaft system with flexible coupling, 3-blade folding propeller GORI and line cutter on propeller shaft
- Large, easily accessible and very well sound insulated engine compartment
- Retractable bow thruster SIDEPOWER 24 V/8 hp
- Sound insulated 3-cylinder ONAN 8 KW diesel generator (running hours as of January 2025: 127 h)
- 230 V shore power connection with charging cable
- MASTERVOLT 24 V/60 A battery charger
- Additional battery charger MASTERVOLT 24 V/100 A
- Inverter MASTERVOLT 24 V/230 V/2.500 W
- Gel service battery bank 24 V/600 Ah
- Starter battery 12 V for engine and generator
- 230 V and 12 V/USB sockets in interior
- Solar panels 2 x 24 V/400 Wp on davits
- DOMETIC 48.000 BTU air conditioning for saloon and all cabins
- WEBASTO 7,6 kW diesel heater for saloon and all cabins
- Combined washing machine and dryer
- Watermaker DESSALATOR dual voltage 24 V/230 V/100 l/h
- Fresh water shore connection
- Two electric toilets, each with 80-litre holding tank with deck suction and sea discharge
- Hot water boiler 50 litres
- LED navigation lights
- LED interior lighting
- Safe

## Navigation/Electronics

- BROOKS [&] GATEHOUSE Hydra 5000 system
- 3 x B[&]G H5000 GFD display in cockpit and 1 x H5000 GFD display at chart table
- Analogue B[&]G wind display in cockpit
- FURUNO Navpilot 711C autopilot
- Second FURUNO Navpilot 711C autopilot (fully independent system)
- 15' multifunction display FURUNO Navnet TZT3 at helm station
- Additional 7' multifunction display B[&]G Vulcan 7 at helm station
- GPS-receiver FURUNO GP330
- Radar antenna on first spreader
- AIS Class B-transponder FURUNO FA70
- Compass
- Video camera in mast
- VHF-radio GARMIN 215 at chart table and second unit at helm station
- TV LCD screen 43' with electric lift in saloon and separate inverter 24 V/230 V/800 W
- Marine entertainment system FUSION Apollo RA770 with BOSE FreeSpace 3 system incl. two loudspeakers and subwoofer in saloon and two cockpit speakers
- Router World Pepwave WIFI 3G/4G with receiver and amplifier

## Safety

- Watertight collision bulkhead between sail locker and forward cabin
- The AMEL 50 can be divided into five watertight sections to prevent water ingress
- Life raft VIKING 8 pers. in container at pushpit
- Rescue collar at pushpit
- EPIRB
- Fire extinguisher
- Fire extinguishing system in engine compartment
- Safety ladder and two steps on outside of swim platform
- Electric and manual bilge pumps

### Accessories

- Dinghy: RIB HIGHFIELD 3,10 m with HONDA 20 hp outboard engine
- Carbon fibre gangway 2.60 m
- Cockpit cushions
- Sunbed cushions for aft deck
- Sun awning for main boom
- Spare parts kit
- Inflatable fenders
- Mooring lines

### Brokerage Liability Disclaimer

All information especially regarding the VAT-status of a yacht has been supplied by third parties. It is non-binding and without guarantee, subject to error and alteration. Our brokerage relies exclusively on information supplied by the vendor carefully compiled and checked by us to the best of our knowledge. Hence, a liability for correctness and completeness of provided information cannot be assumed.



## IMAGES





## IMAGES

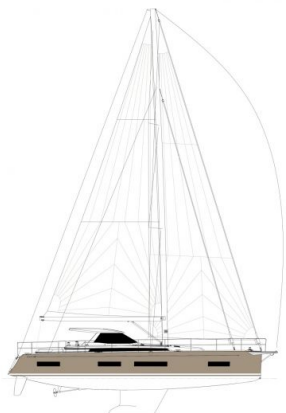
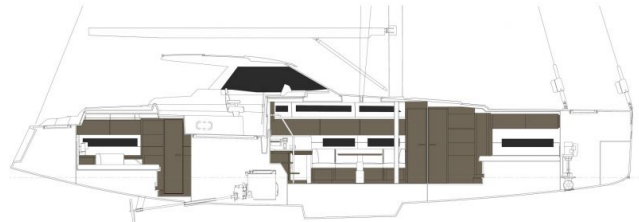
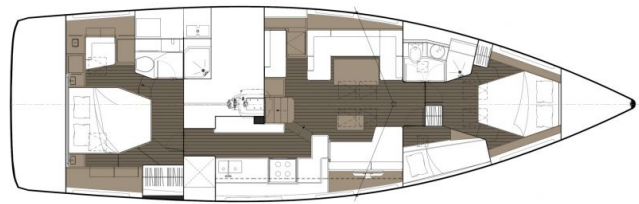




## IMAGES

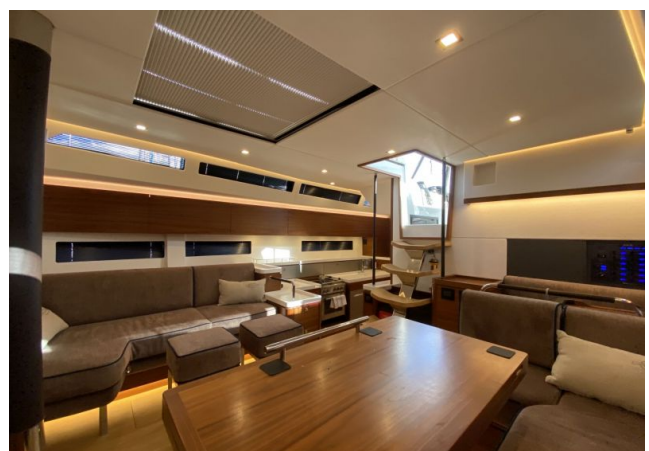
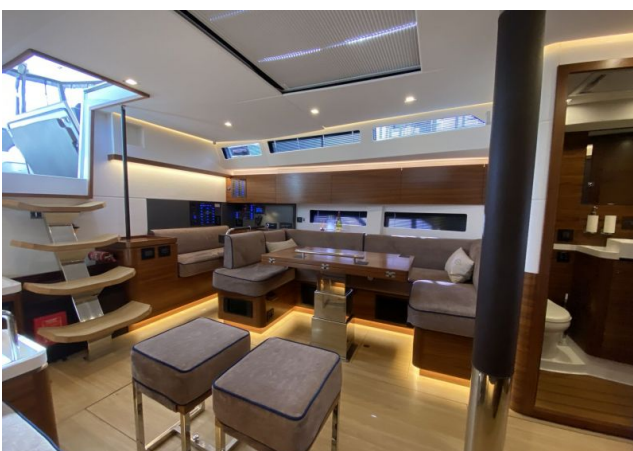


## IMAGES





## IMAGES

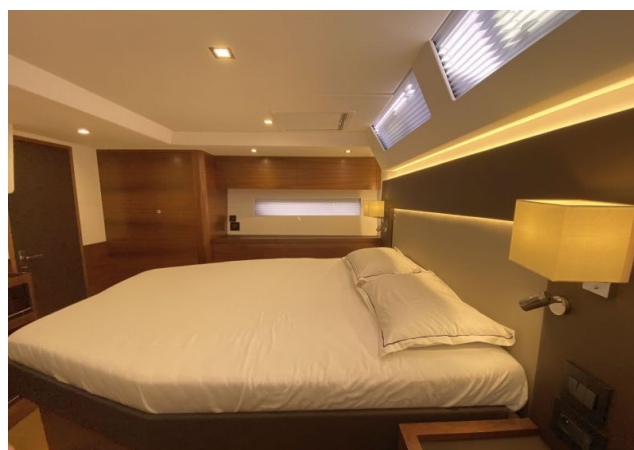




## IMAGES

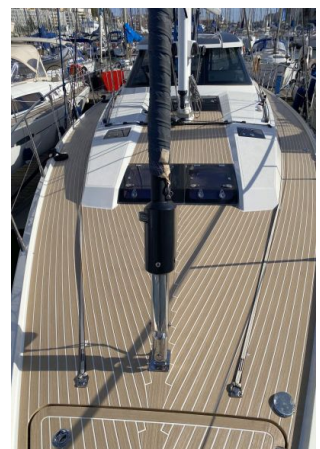


## IMAGES





## IMAGES



## IMAGES

